

University Hospital Llandough- Developments and Community Partnership Working

Vale of Glamorgan Local Service
Forum

Peter Welsh, Hospital General Manager

5 October 2012



Introduction

- My Role at UHL - University Hospital Llandough
- Current Developments
- Future Developments
- Working with the community and partnership working

Role of the General Manager at UHL

- Introduction of the Health Board and re-organisation
- Day to day Operational Management
- Communications – internal and external
- Community Involvement
- Service Improvements and Developments

Patient Activity at the Hospital in 2011/12

- Outpatients/ Day cases/Diagnostics
- Inpatients

PATIENT ACTIVITY AT UHL 2011/12

- Outpatients/Day Cases/ Diagnostics

200,460

- Inpatients

37,500 plus over 20,000 emergencies

Delivered by approx. 2,500 staff

University Hospital Llandough

WHAT IS PLANNED FOR THE FUTURE ?

UHL- THE FUTURE

- The UHB is working collaboratively with partners to implement a number of major projects to facilitate and support our strategic change programme
- To create Centres of Excellence - clear vision for the role of UHL as a specialist rehabilitation and recovery hospital and a specialist elective centre for the residents of Vale of Glamorgan, Cardiff and beyond.

In relation to UHL service developments include:

- Mental Health Assessment Unit for Older People
- Stroke Rehabilitation Centre
- The Development of Specialist Neuro and Spinal Rehabilitation Services
- Adult Mental Health Inpatient Unit
- Other general improvements for patients, staff and the local community

Mental Health Services Older Persons

- 82 Inpatient beds on 5 wards
- 35 place MHSOP Assessment and Recovery day facility.
- 40 place Rehabilitation Day Hospital
- UHL Outpatient Department
- Cost £57 million
- Work Completed August 2012
- Inpatient Service transfers from Whitchurch, Barry and St David's Hospitals to be completed by October 2012



































Stroke Rehabilitation Centre

- Single **Stroke Rehabilitation Centre** at UHL resulting from the integration of the existing Vale Stroke Rehabilitation Ward at UHL (Ward East 3) and the transfer of the Cardiff Stroke Unit and associated staff from CRI West Wing
- 45 beds, including 17 single rooms
- Due for completion



Other New Clinical Developments to commence soon

- Specialist Neuro and Rehabilitation Services
(Rookwood Hospital)
- Adult Mental Health Services
(Whitchurch Hospital)

Specialist Neuro and Rehabilitation Services

- Replacement for Rookwood Hospital
- 26 bed spinal cord injury rehabilitation ward;
- 24 bed specialist neuro rehabilitation ward;
- A 4 bed critical care service providing Long Term ventilation (LTV)
- High specification therapy support services to include purpose built hydrotherapy unit;
- The provision of a dedicated dental clinic, specifically designed to meet the needs of this unique client group;
- Enhanced independent living facilities to promote earlier discharge to the community:
- Service Transfer 2014



Adult Acute Mental Health Unit



GIG
CYMRU
NHS
WALES | Bwrdd Iechyd Prifysgol
Caerdydd a'r Fro
Cardiff and Vale
University Health Board

University Hospital Llandough Adult Acute Mental Health Unit

- Total 135 Beds
 - 66 General mental health
 - 10 Psychiatric intensive care
 - 12 Addiction
 - 12 Neuropsychiatry
 - 25 Male low secure
 - 10 Supportive recovery

***TOTAL INVESTMENT of
£100million***



GIG
CYMRU
NHS
WALES | Bwrdd Iechyd Prifysgol
Caerdydd a'r Fro
Cardiff and Vale
University Health Board

University Hospital Llandough Adult Acute Mental Health Unit

- Enabling works package to include:

- New multi deck & surface

Parking Car parking management improvements

- Construction traffic access road

University Hospital Llandough Adult Acute Mental Health Unit

- Enabling works package £12m
- Planning application submitted Dec 2011
- Approved at Planning committee 28 March 2012
- Works commence on site September 2012
- Anticipated completion Spring 2013

University Hospital Llandough Adult Acute Mental Health Unit

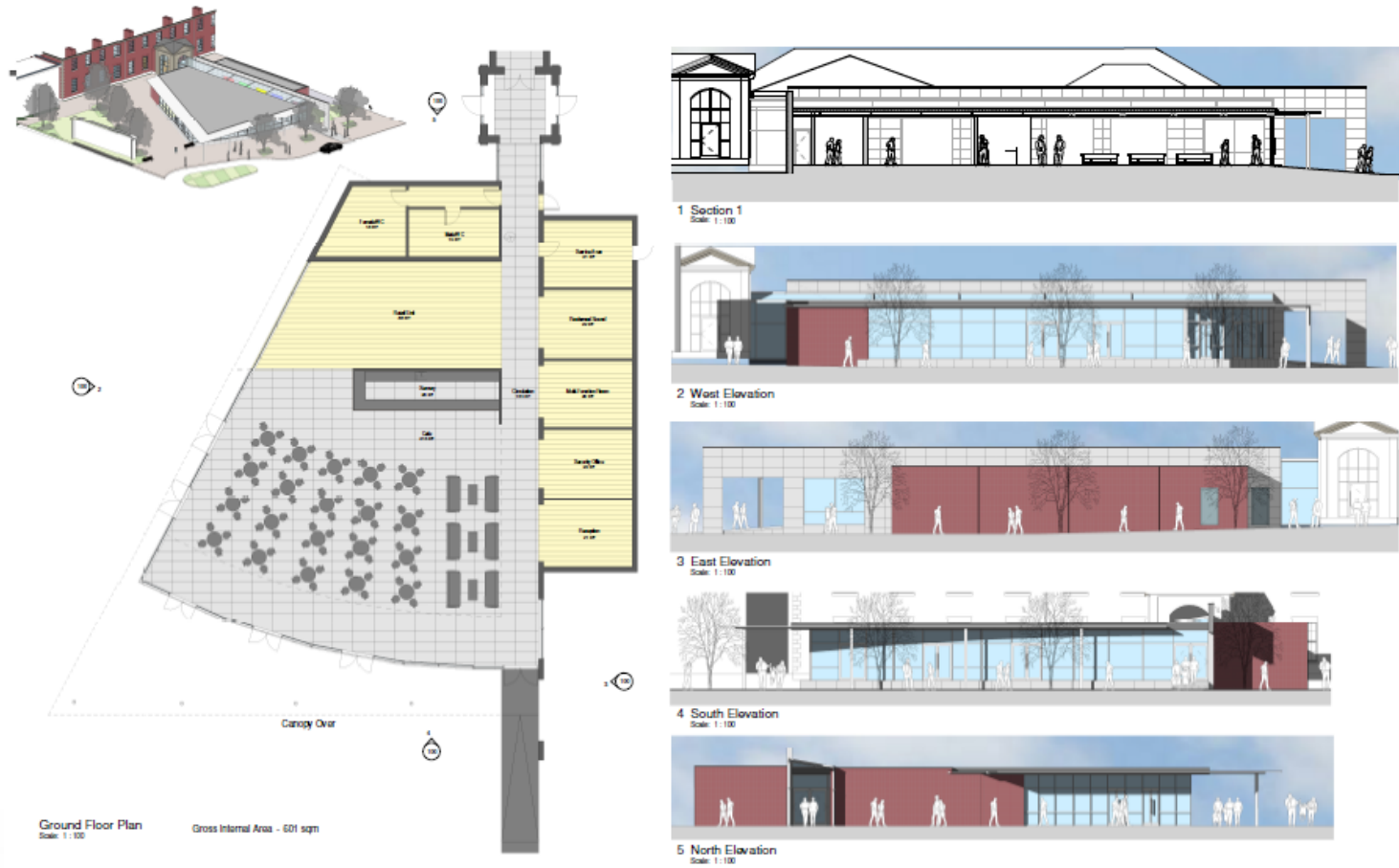


Proposed Multi Deck Car Park

University Hospital Llandough Adult Acute Mental Health Unit

- Proposed to construct a new main entrance, to bring buildings closer and create a community focus in the form of:
 - Plaza style development with a coffee shop, newsagents, small shop etc.
 - Meet & greet area
 - Meeting rooms for UHB and community use

University Hospital Llandough Adult Acute Mental Health Unit



Proposed Main Entrance Plaza

University Hospital Llandough Adult Acute Mental Health Unit

- Main Scheme Progress
 - Full Business Case for submission to Welsh Government 2012
 - Planning application submitted summer 2012
 - Anticipated Welsh Government approval early 2013
 - Commence main works early summer 2013
 - Anticipated completion July 2015

University Hospital Llandough Adult Acute Mental Health Unit



View from South East

WORKING WITH THE COMMUNITY

- Hospital is based and part of the local community
- Need to keep the community informed and to listen to what they say

Community links

- Llandough Community Council Liaison Group
- Presentations , including:
 - Penarth Stroke Association
 - Dinas Powys Voluntary Concerns
 - South Wales Police Senior Management Team for this area

Partnership Working

- ASBO Review Group
- Safer Vale/ NHS Group
- WRVS
- Scouts and Guides
- Charities using our hospital facilities
- Volunteers
- Being part of the community - 80th Celebrations in 2013.

What will UHL look like in 3-5 years time?

Continue to develop the hospital as a Centre of Excellence for range of services :

- Over £200million Spent
- Increase in beds
- Improving community links
- Major employer in the area
- New facilities for staff, patients and the community



Thank you for listening