

Families First FACT Service Families Achieving Change Together

Gareth Powell, Practitioner Manager
&

Rob Couchman, Project Worker
Vale of Glamorgan Council





Families First FACT PROJECT



Ariennir gan
Lywodraeth Cymru
Funded by
Welsh Government



Background of Families First

Families First is a new Welsh Government funded initiative, established to target early intervention and prevention services to children, young people and families. Minimising the need for higher level support and intervention from statutory services.

The initiative recognises that some of the behaviours children and young people present are as a result of factors affecting other members of the family. To have the most positive impact on effecting change within a family, the project aims to provide families with holistic multi-agency support, tailored to the needs of individuals and the family as a whole.

The newly developing initiative established in the Vale of Glamorgan is delivered through a raft of supported programmes which are interlinked and tied to the FACT team.



Background of Families First

To develop an integrated approach to family support, Families First will ensure that support provided is:

Family focused - taking a whole family approach to improving outcomes.

Bespoke - tailoring help to individual family circumstances.

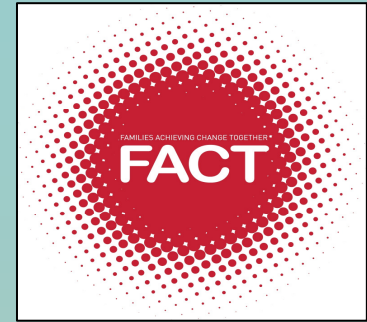
Integrated - with effective co-ordination and planning and service provision across organisations, ensuring that needs assessment and delivery are jointly managed and that there is a seamless progression for families between different interventions and programmes.

Pro-active - seeking early identification and appropriate intervention for families.

Intensive - with a vigorous approach and relentless focus, adapting to families' changing circumstances.

Local - identifying the needs of local communities and developing appropriate service delivery to fit those needs.

The FACT Project

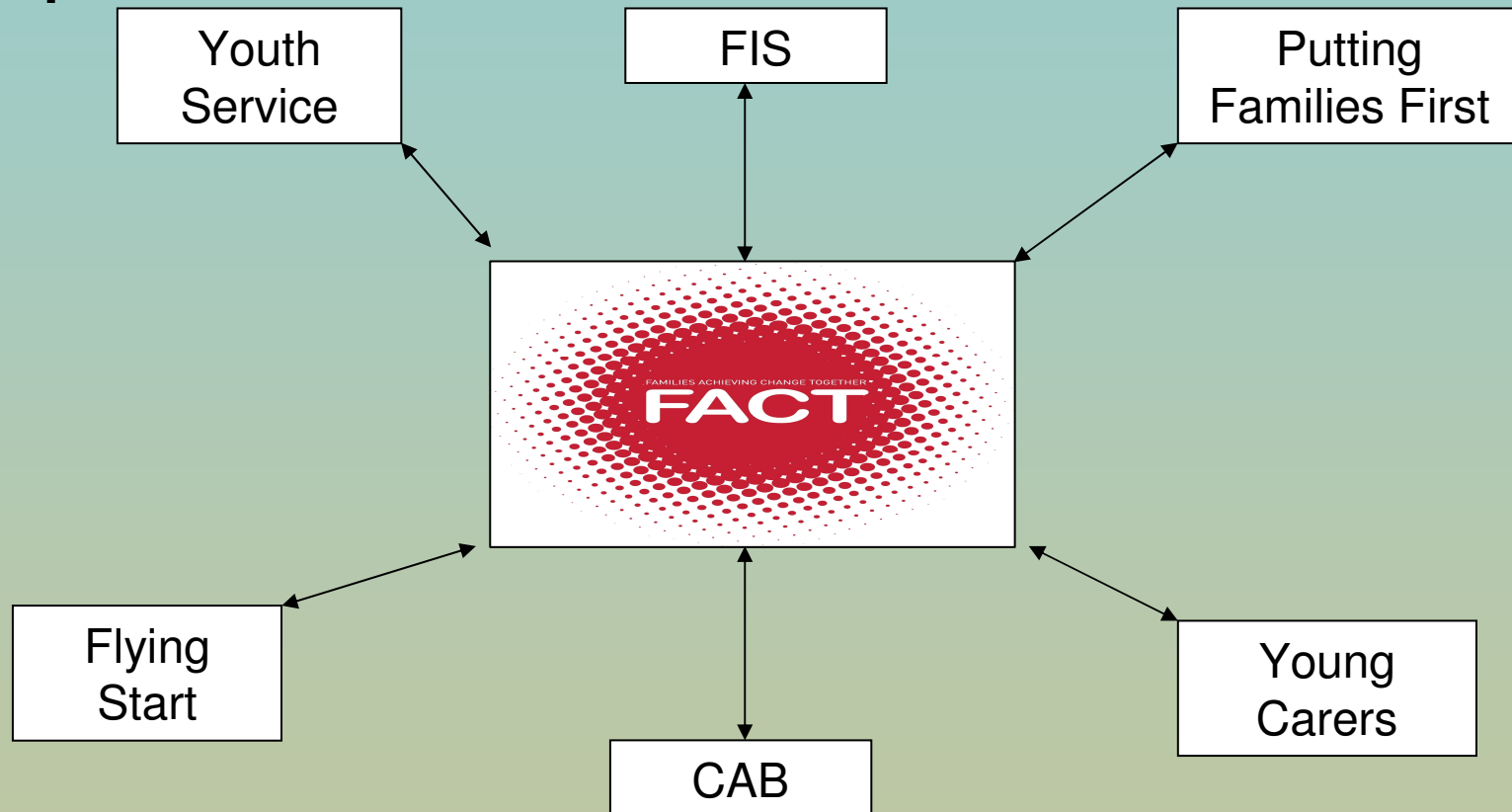


The FACT team is a crucial part of the project as it manages the referrals, and provides a team of support workers able who will complete a 'Joint Assessment Family Framework' (JAFF) to ensure that they deliver family support through holistic multi-agency service tailored to the identified needs of individuals and the family as a whole.

The FACT team has been developed in line with the 'Team Around the Family' (TAF) model and will be supported by a raft of [supportive programmes](#).

Access to the FACT project will be via referral with a [fixed criteria](#).

Families First Services



Education, Social Services, Health, Vol sector etc.



Progress update...

- Employed in February 2012
- Project Workers employed in April 2012
- Administrator to be employed in September/October
- Support workers to be employed in September/October
- Systems and Processes have been developed and implemented
- Focus group with parents
- Publicising the service – workshops, team meetings
- Publicity material – leaflets, pens, trolley tokens etc
- Piloted referrals from the Duty team in Social Services
- Went “live” on 3rd September



Aims and Objectives

Aim of the Service

To identify and co-ordinate support enabling families to make positive changes, reducing the numbers of families developing more complex and challenging needs.

Objectives

Early identification of un-met need and provision of service that reduce or prevent families requiring statutory or specialist services.

To ensure a whole family approach to improving the outcomes for children, young people and their families.

Using a multi agency approach delivering and co-ordinating other services to provide a time limited holistic and focussed support package around the family.



Criteria:

Residing in the Vale of Glamorgan.

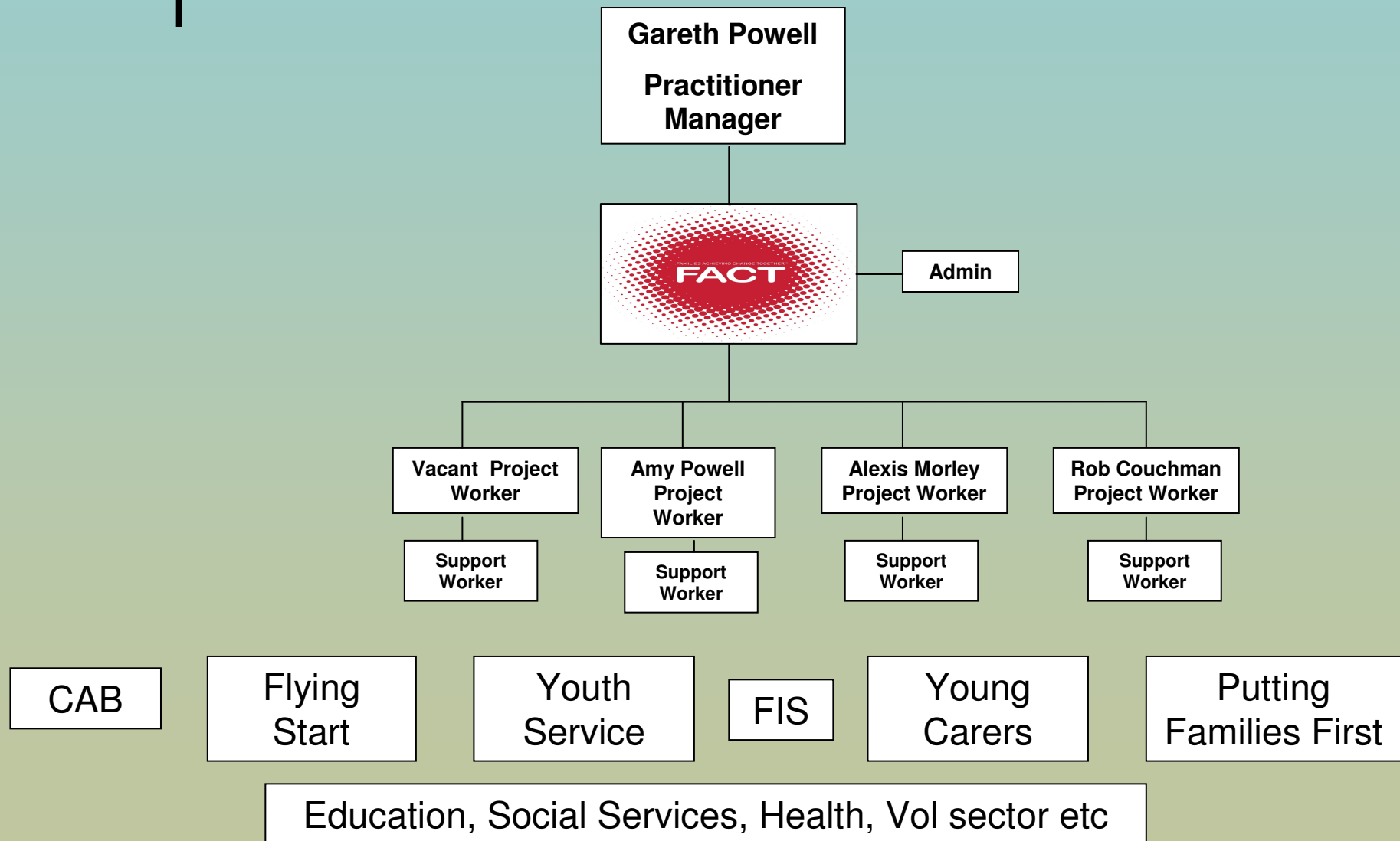
Children and young people aged between 0 - 18 years.

Needs of the family cannot be addressed by one service only in relation to –
Child/Young person's progress or well being, development, learning,
social interaction and family environment.

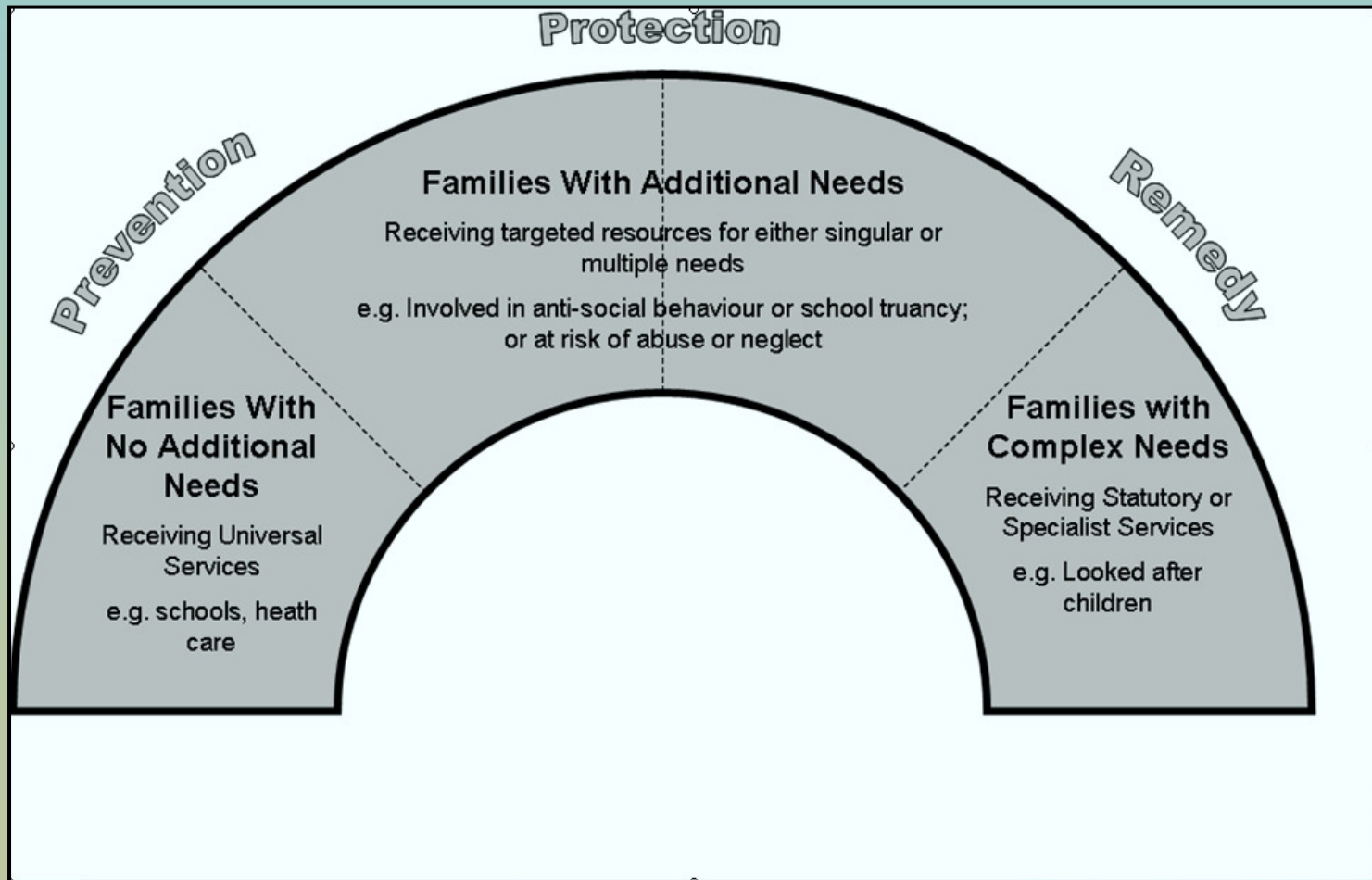
Consent is required.

Not open to Social Services.

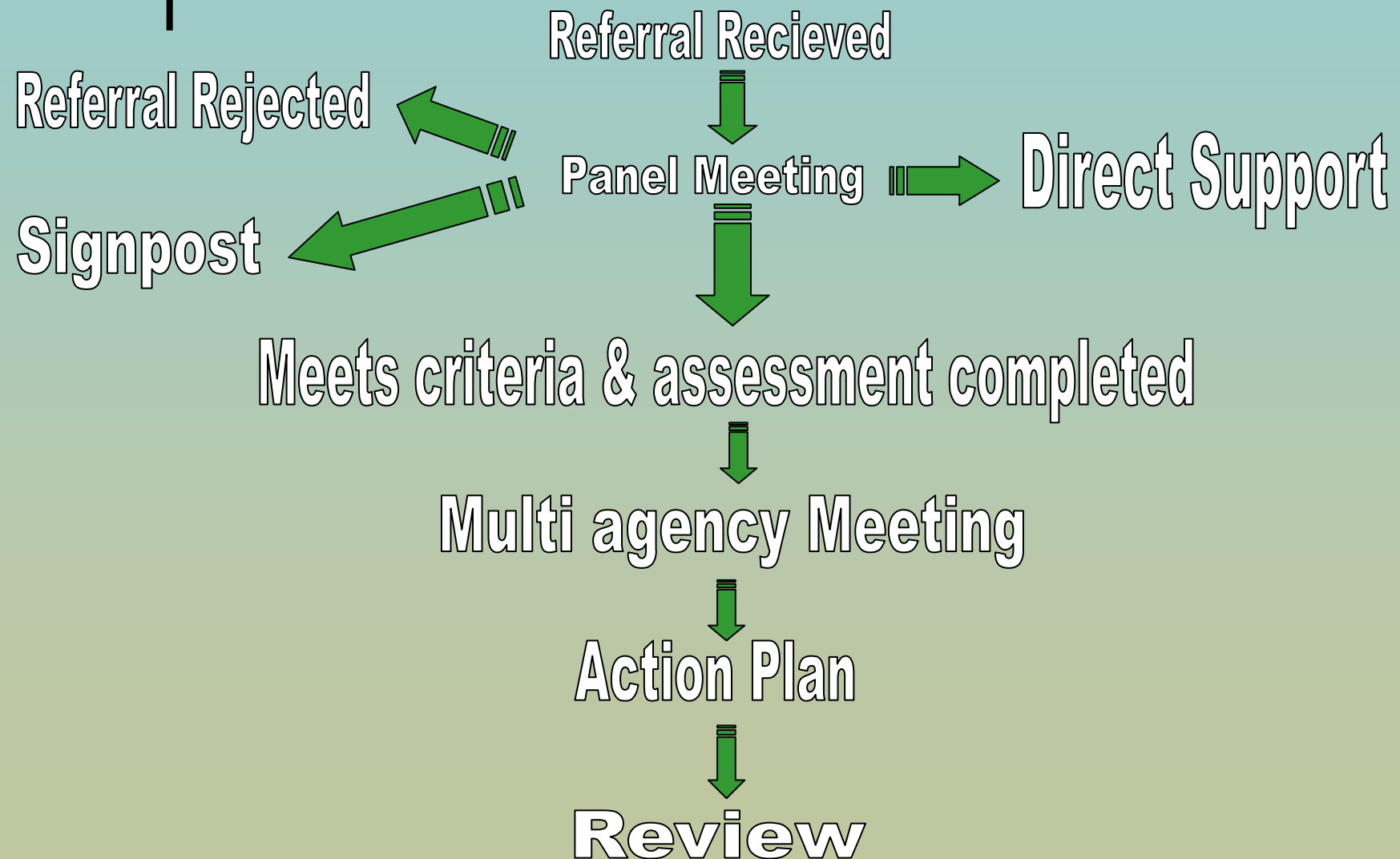
Team Structure



Rainbow Model



Process of a referral





To sum up...

FACT is central to Families First in the Vale

Supported by a raft of supportive programmes

Key focus is early intervention and prevention

Early identification of unmet need

Whole family approach

Multi agency working



Thank You

Any questions?