



Regeneration & Development in the Vale of Glamorgan

Local Service Board Forum

October 2012

Rob Thomas

Director of Development Services



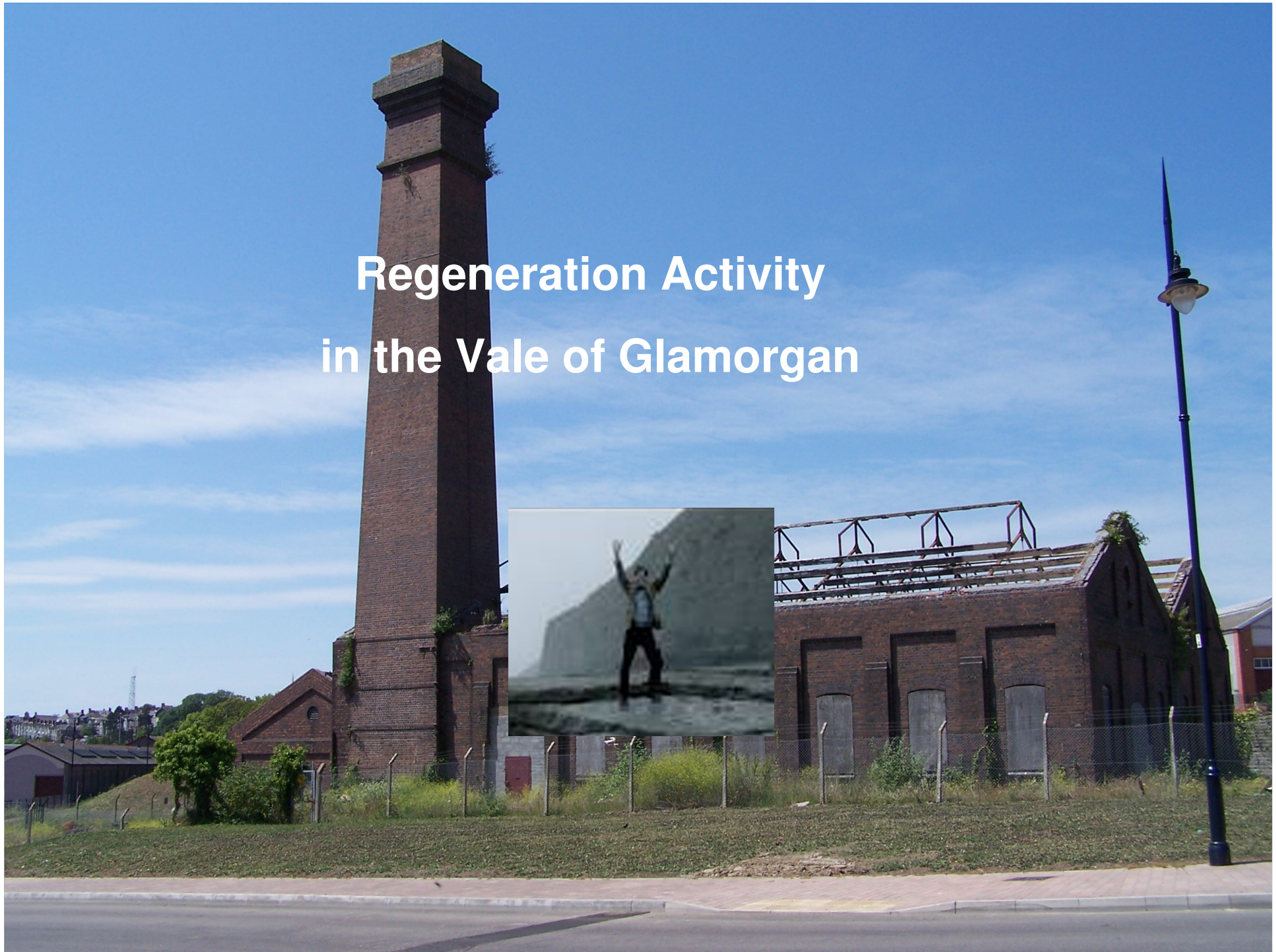


Regeneration & Development in the Vale of Glamorgan – current position

Structure of presentation

- Context
- Overview of current activity-the highlights
- Emerging issues and influencing factors
 - the direction of travel
- Challenges and Opportunities for the future

Regeneration Activity in the Vale of Glamorgan





Regeneration & Development in the Vale of Glamorgan – context

Community Strategy 2011-21

Priority Outcomes 7 & 8

The underlying causes of deprivation are tackled and the regeneration of the Vale continues, opportunities for individuals and businesses are developed and the quality of the built and natural environment is protected and enhanced.

The Vale maximises the potential of its position within the region, working with its neighbours for the benefit of local people and businesses, attracting visitors, residents and investment.

Lead Partnership - Regeneration



Regeneration & Development in the Vale of Glamorgan – current position

Rural Regeneration

- Creative Rural Communities and overseen by a Rural Partnership (since 2004).





Regeneration & Development in the Vale of Glamorgan – current position

Barry Regeneration Area

- Established in March 2010 by Welsh Government.





Regeneration & Development in the Vale of Glamorgan – current position

St Athan and Airport Enterprise Zone

- Designated in April 2012 with Interim Board established





Regeneration & Development in the Vale of Glamorgan – current position

Communities First

- A Welsh Government scheme in existence since 2002.
- Two existing areas in Barry – Gibbonsdown and Castleland

Housing Renewal schemes

- Penarth (completed in 2011)
- Castleland (from 2010)





Regeneration & Development in the Vale of Glamorgan – current position

Major Council regeneration schemes

- Redevelopment of Penarth Heights





Regeneration & Development in the Vale of Glamorgan – current position

Major Council regeneration schemes

- Council investment at Barry IQ.





Regeneration & Development in the Vale of Glamorgan – current position

Major Council regeneration schemes

- Cowbridge school and Penarth learning Community.

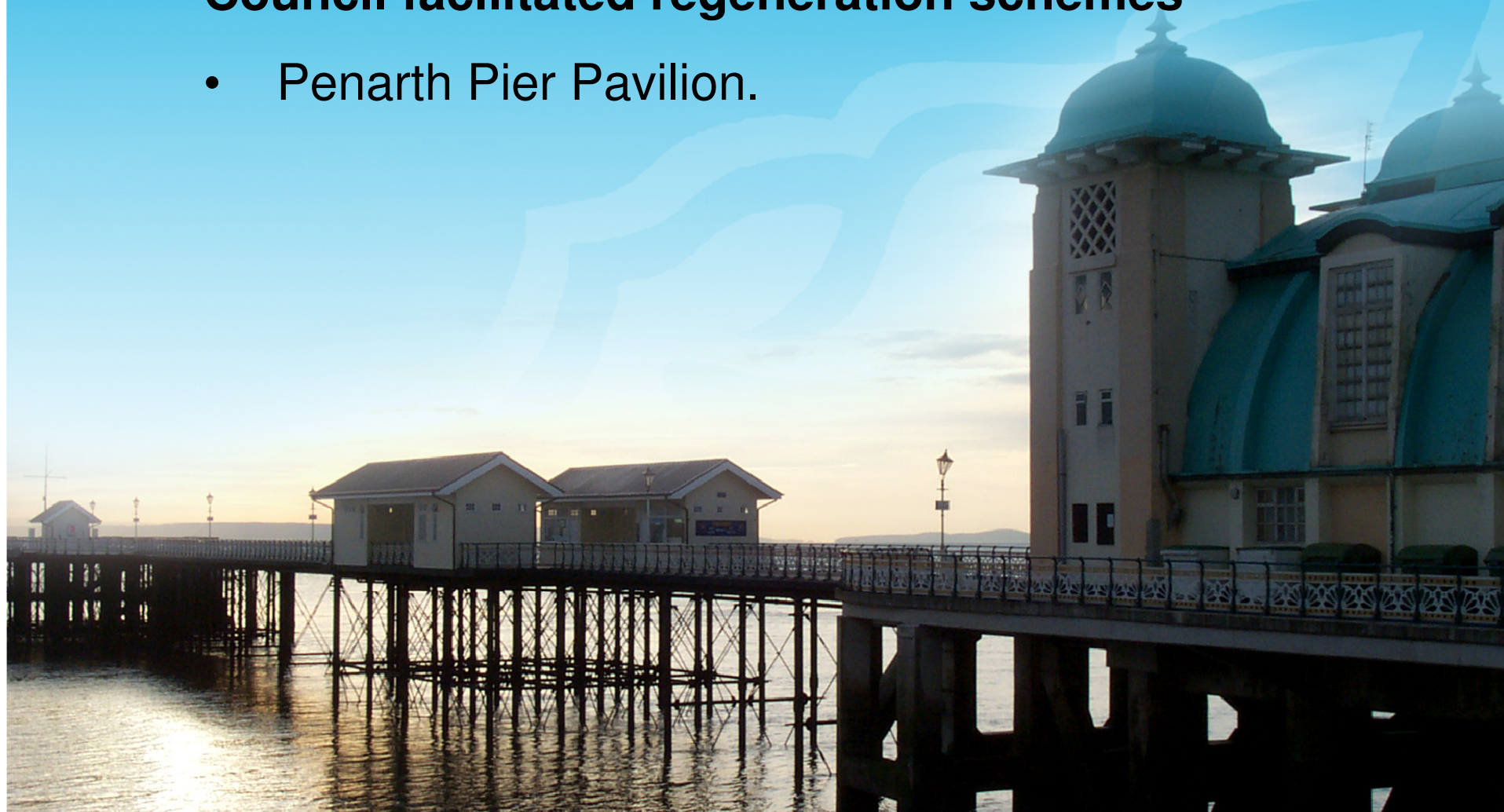




Regeneration & Development in the Vale of Glamorgan – current position

Council facilitated regeneration schemes

- Penarth Pier Pavilion.





Regeneration & Development in the Vale of Glamorgan – current position

Council infrastructure schemes progressed

- Barry Docks Park and Ride
- Sustainable Transport schemes.
- Barry Docks Link Road safety improvements





Regeneration & Development in the Vale of Glamorgan – current position

Linking new development to community benefit





Regeneration & Development in the Vale of Glamorgan – emerging issues

The Future of Regeneration Policy

- Welsh Government Review of Regeneration policy – to inform funding decisions
- A focus on town centres and coastal towns
- Consultation to be launched in October 2012 – to be confirmed
- Ministerial announcement on future direction in February 2013
- The future of Rural Development funds via Welsh Government (post December 2013)



Regeneration & Development in the Vale of Glamorgan – emerging issues

Barry Regeneration Area – the next 18 months

- Focus on Barry Island
- Decisions on the future use of Nells Point
- Gateway and public realm enhancements
- Master-planning to guide future investment and interventions
- New road link to the island and waterfront development
- Future use of the Barry Island fun fair site





Regeneration & Development in the Vale of Glamorgan – emerging issues

New Communities First programme announced in November 2011

- A Community focussed tackling poverty programme, based around the 10% most deprived communities in Wales
- The Cluster size is circa 15,000 people.
- The bid for a Barry cluster being evaluated at present, and is based on areas of Gibbonsdown, Court, Castleland, Cadoc and Buttrills
- Themes and interventions focus on: Prosperous, Learning and Healthy Communities



Regeneration & Development in the Vale of Glamorgan – emerging issues

Forthcoming Developments



PLC



Llandough Hospital

Barry Waterfront





Regeneration & Development in the Vale of Glamorgan – emerging issues

The importance of infrastructure –The C.I.L.

- Future restrictions on the use of S106 agreements
- CIL to be used for strategic infrastructure requirements
- CIL will set a levy payable by a a wide range of developers.
- Levy based on an infrastructure plan – all tested by an independent Inspector





Regeneration & Development in the Vale of Glamorgan – emerging issues

A framework for the Town Centres of the Vale

- Report commissioned (NLP)
- Consultation undertaken in respect of the 5 town centres
- Draft report being finalised
- Will provide a policy direction on all issues relating to our town centres.





Regeneration & Development in the Vale of Glamorgan – emerging issues

Tourism and Events as a focus for regeneration and investment – *Destination Management Plans*

- **Taking advantage of geography and location**
- **Making the most of the diversity of the Vale-the natural and built heritage**
- **Increasing the ‘offer’ available**
- **Branding and Marketing are key**

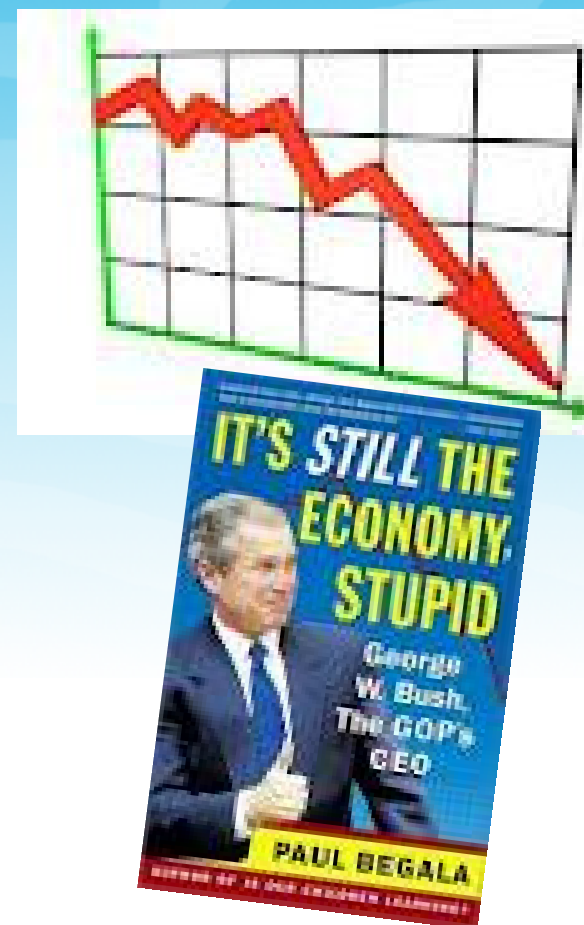


Regeneration & Development in the Vale of Glamorgan - challenges & opportunities

The Economic downturn

- Making synergies is essential to make money go further
- Adding value to existing interventions
- Viability on new development is questioned.

BUT – The Vale has a good track record and there are signs of increased activity





Regeneration & Development in the Vale of Glamorgan - challenges & opportunities

Making synergies and avoiding silo working

- Linking investment to employment and opportunities for local people
- Linking different policy interventions
- Not just in monetary terms but to deliver tangible outcomes
- Need for joined up thinking to maximise regeneration opportunities - critical in making a case for the Vale



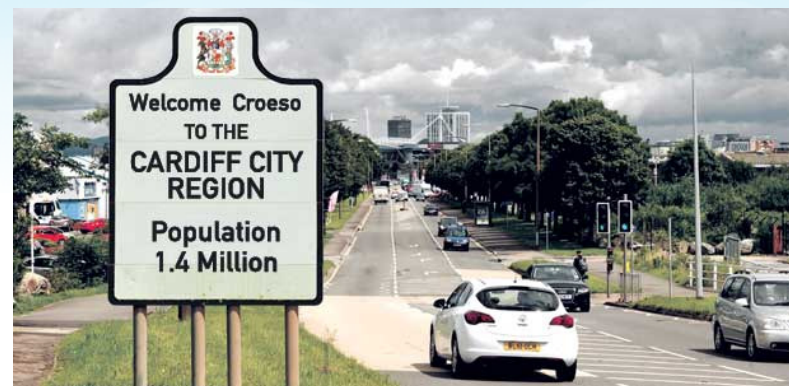


Regeneration & Development in the Vale of Glamorgan - challenges & opportunities

The National and regional picture

- The Wales Infrastructure Investment Plan (WIIP)
- The city region approach and the role of Cardiff
- Review of land use planning
- The focus on collaboration and working in partnership at a regional as well as local level

Being in the best possible position to influence Welsh Government policy direction



Regeneration & Activity in The Vale of Glamorgan

Thank you for listening

