

# Consultation Document

On the proposal to reconfigure primary provision in the Western Vale by:

1. creating a new 210 place primary school building with a 48 part time place nursery class at the land north of the railway line in Rhoose;
2. migrating staff and pupils from Llancarfan Primary School into the new school building.
3. extending the age range of the school from 4 – 11 years to 3 – 11 years

This document can be made available in Braille.

Information can also be made available in other community languages if needed.

Please contact us on 01446 709727 to arrange this.

# Contents

Introduction	3
Explanation of terms used in this document	4
Involving children in the consultation	5
Involving parents, governors and staff	5
Background to the proposals	7
The proposal	9
Catchment map	10
Schools serving the area at present	12
Why are we proposing the changes?	13
Information about the schools	14
Current performance	15
The intended impact on education outcomes	18
How would other schools be affected?	20
How would Additional Learning Needs provision be affected?	21
Advantages and disadvantages of these proposals	21-22
Alternatives considered	23
Admissions and catchment area arrangements	23
Finance	24
Human Resources matters	25
Learner Traveller arrangements	25
Impact of the proposal on the Welsh Language	26
Key dates	27
Frequently Asked Questions	29
Consultation response form	31

## Introduction

The Vale of Glamorgan Council is committed to ensuring that all pupils within the Vale have every opportunity to attain the best possible outcomes. In order to achieve this ambition it is essential that we ensure schools remain sustainable, reflect the needs of the local community and are equipped with the best possible learning environments.

This consultation is an opportunity for you to learn about the school re-organisation proposal being put forward to build a new 210 place school building for Llancafán Primary School, with the addition of a 48 part time nursery places which would be located in Rhoose. It is proposed that all pupils, staff and governors from Llancafán Primary School would transfer into the new school building. This consultation gives you the opportunity to ask questions and make comments that will be considered when the Council decides how to proceed.

This document explains the Council's proposals to:

- Create a new 210 place primary school building with a 48 part time place nursery class for Llancafán Primary School in Rhoose
- Migrate staff and pupils from Llancafán Primary School into the new school building.
- Change the age range of Llancafán Primary school from 4-11 years to 3-11 years.

Our consultation process follows Welsh Government guidelines outlined in the School Organisation Code 2013. A range of individuals and groups are being asked for their views about these proposals.

Before any decisions are made, the Council needs to ensure that it offers a number of opportunities for individuals and interested groups to make their views and opinions on the proposals known.

The Council is consulting with the following groups:

Staff (teaching and non-teaching) at Llancafán Primary school	Governing Body of Llancafán Primary School
Parents/Carers and Guardians of children attending Llancafán Primary school	Llancafán Community Council
Vale of Glamorgan Children and Young People's Programme Board	Vale of Glamorgan Early Years Development Partnership (EYDCP)
Communities First Partnership	Local Councillors
Assembly Members (AM's) / Members of Parliament (MP's) / Regional Assembly Members	Welsh Language Commissioner
Care and Social Services Inspectorate Wales (CSSIW)	Neighbouring Primary and Secondary schools in the Vale of Glamorgan
Rhieni dros Addysg Gymraeg (RHAG)	Central South Consortium Joint Education Service
Estyn	Trade Unions
Welsh Government Ministers	Directors of Education – All Neighbouring Authorities

Local Police and Crime Commissioner	Diocesan Directors of Education
Council's Transportation Department	

Table 1 List of groups to consult as part of the consultation process

## Explanation of terms used in this document

**Admissions Number** – All maintained schools must admit pupils up to at least their published admission number. The admission number is the number of pupil places available in each year group.

**Character of a School** – The overall profile of the school, for example Llancarfan Primary School is a Community School admitting children between the ages of 4 to 11 years. It is proposed that this will change to 3-11.

**'CSCJES'** – Central South Consortium Joint Education Service. The regional School Improvement Service for the five local authorities of Bridgend, Cardiff, Merthyr Tydfil, Rhondda Cynon Taff and the Vale of Glamorgan.

**'CSSIW'** – Care and Social Services Inspectorate Wales. The regulator for social care and social services in Wales providing independent assurance about the quality and availability of child minders and nurseries, along with other social care placements, across the Principality.

**DDA** – Disability Discrimination Act. Schools must not treat disabled pupils less favorably than others. They must make "reasonable adjustments" to ensure that disabled pupils are not at a substantial disadvantage, and they must prepare school accessibility plans to show how they will increase access to education for disabled pupils over time.

**'EIA'** – An Equality Impact Assessment. [EIA] is a process designed to ensure that a policy, project or scheme does not discriminate against any disadvantaged or vulnerable people.

**'FSM'** – Free School Meals.

**'LA'** – Local Authority which means the Vale of Glamorgan Council.

**'LSA'** – Learning Support Assistant.

**'Number on roll'** – the number of pupils attending a school.

**'PLASC'** – Pupil Level Annual School Census. In January of every year, verified information is collected by schools for submission to the Welsh Government. This includes the number of pupils enrolled in each school, their age groups, home addresses, ethnicity and data on Welsh language, free school meals eligibility, special education needs and first language.

**'ALN'** – Additional Learning Needs.

**School Action (SA)** – When a class or subject teacher identifies that a pupil has SEN they provide interventions that are additional to or different from those provided as part of the school's usual curriculum.

**School Action Plus (SA+)** - When a class or subject teacher and the SEN Co-ordinator are provided with advice or support from outside specialists, so that alternative interventions additional or different to those provided for the pupil through School Action can be put in place.

**Section 106** – the Section 106 contribution is sought from anyone who has an interest in the building of a housing development, towards the costs of providing community and social infrastructure, educational provision, open space / play equipment, transport or healthcare for those occupying the new homes.

**‘SRB’** – Specialist Resource Base for children with special educational needs.

**Statemented** – A child has a Statement of Educational Need (SEN), otherwise known as Additional Learning Needs (ALN), if he or she has learning difficulties which require special educational provision to be made to him or her. A learning difficulty means that the child has significantly greater difficulty in learning than most children of the same age or that the child has a disability that needs different educational facilities from those that the school generally provides for children.

**Statutory Notice** – A statutory notice is the formal publication of a finalised proposal. This will only be undertaken if a decision is made by Cabinet to proceed with the proposal following consideration of all the responses from the consultation process. This is a legal requirement as outlined in the School Organisation Code 2013.

### Involving children in the consultation

It is important that when bringing forward proposals Councils must make suitable arrangements to consult with pupils and where possible those pupils likely to attend the school. The Council firmly believes that the pupils of Llancarfan Primary School should be given the opportunity to make their views known about this proposal.

A consultation workshop will be held with the school council of Llancarfan Primary School to gather their views about the proposal. The information gathered at this session will be included in the final consultation report. The full report will be submitted to Cabinet for consideration following the consultation period.

### Involving parents, governors and staff - how you can find out more and give your views

The Council intends to hold drop in sessions for all stakeholders consulted as part of the process.

Parents/carers and guardians of pupils at the school are invited to attend the parents’ drop in session where you can ask any questions about the proposal.

We will always ask that you complete a consultation response form, as we can only accept views in writing.

The date and venue for the drop in session will be displayed by the school and playgroup via the school and playgroup websites.

We have also arranged meetings for staff and the governing body of the school.

This document and further supporting information can also be found on the Vale of Glamorgan website: [www.valeofglamorgan.gov.uk/westernvalereconfiguration](http://www.valeofglamorgan.gov.uk/westernvalereconfiguration)

Links to this document can also be found on social media through the Vale of Glamorgan Council Twitter feed and via the Vale of Glamorgan Council Facebook page.

Details of the consultation meeting dates are given below:

Nature of consultation	Date/Time	Venue
Staff meeting – school	Wednesday 28 <sup>th</sup> March 2018 4.30pm – 5.30pm	Llancarfan Primary school
Governors’ meeting – school	Wednesday 28 <sup>th</sup> March 2018 5.30pm – 6.30pm	Llancarfan Primary school
Parents’ drop in session - school	Wednesday 14 <sup>th</sup> March 2018 9.00am – 11.00 am 3.00pm – 7.00pm	Llancarfan Primary school
Rhose community drop in session	Friday 23 <sup>rd</sup> March 2018 3.00pm – 6.00pm	Rhose community Centre, Stewart Road, Rhose

Table 2 - Staff, Governor and Parents meetings

## Your views matter

The consultation period will run from **5 March 2018 to 20 April 2018**. You can respond to our proposals at any time during this period.

Your views are important to us, and there are a number of ways that you can let us know.

You can:

- Complete the on line response form at:  
[www.valeofglamorgan.gov.uk/westernvalereconfiguration](http://www.valeofglamorgan.gov.uk/westernvalereconfiguration)
- Attend a drop-in session and speak to us in person. This is a good way to be able to get answers to any questions you may have about the proposals. We will still ask that you complete a consultation response form, as we can only accept views in writing
- Complete and return the consultation response form to the address given at the bottom of the form at the end of this document and send to:

Freepost RTGU-JGBH-YYJZ  
Reconfiguration of Western Vale Consultation  
Corporate and Customer Services  
The Vale of Glamorgan Council  
Civic Offices  
Holton Road  
Barry  
CF63 4RU

All responses given to us in writing, using the consultation response form, will be considered by the Cabinet before it decides whether or not to publish a statutory notice about the proposals.

Responses received from consultees who are opposed to these proposals, although considered as part of the consultation report, will not be treated as statutory objections. A statutory objection would form part of the statutory notice period, if it is approved at the next stage, by the Council's Cabinet.

If you wish to object to the notice at the next stage of the process, should it proceed, you will need to do so in writing during the statutory objection period. These key dates are outlined in the Statutory Process Timetable on page 28.

Please note that all comments sent in writing must contain the full name and full postal address of the person making the comments.

The closing date for responses to this consultation is **20 April 2018**. Unfortunately, responses received after this date will not be considered by the Council.

## Background to the Proposal

Llancarfan Primary School is comprised of an original Victorian school building containing two classrooms. The building has solid stone walls and a pitch slate covered roof. There are two separate demountable classroom blocks, one single and one double classroom, which are in good condition. In addition, there is a block built in 2000 and extended in 2006 providing the hall, kitchens, a small classroom and staff accommodation.

The school is on a small site which is slightly offset by the use of the adjacent tennis club courts. The school does not meet current building standards and following consideration of the restricted size and location of the site, it is not possible to replace the school with a new build at its current location. An additional challenge relates to the difficult and congested access to the school through the village and the lanes leading to Llancarfan. The four separate buildings and small sloping site do not meet 21st Century School design guidance standards for primary schools which have been used for all new builds completed through the Councils 21st Century Schools programme. These schools comprise a fully accessible one or two storey building providing all the required educational functions within a single building set in grounds meeting current outdoor curriculum needs.

The 21st Century Schools Programme is a long-term strategic investment in educational estate throughout Wales. It is a unique collaboration between Welsh Government, the Welsh Local Government Association (WLGA), local authorities, colleges and dioceses. All of the Vale of Glamorgan Council projects that were undertaken as part of Band A of the 21<sup>st</sup> Century Schools Programme were completed on time and on budget. The Council is expected to receive Welsh Government Band B match funding through the 21st Century School Programme for the proposal.

The school is operating with a surplus capacity of 20 places (16%) that is set to increase to 28 places (22%) over the next five year period. The Vale of Glamorgan is committed to reducing the number of surplus places in schools in order to meet an agreed target put in place as a requirement of Welsh Government in order to ensure education is provided efficiently. Within the primary sector, this equates to an agreed target of no more than 10%.

The Councils adopted Local Development Plan has allocated a total of 787 new dwellings in Rhose. The allocation comprises 87 dwellings at land south of the Railway Line, and 700 new dwellings at land north of the Railway Line. The allocation to the south of the Railway Line has been completed and occupied with children in the school system. The allocation to the land north of the railway line is in two parts

- Land to the north-west of the Railway line (350 units); and
- Land to the north-east of the Railway line (350 units)

The development of land to the north-west of the Railway Line is currently under construction by Taylor Wimpey. The land to the north-east of Railway Line formerly had outline planning permission but this has now lapsed.

The developers of the land to the north-west of the Railway Line, Taylor Wimpey, are required to transfer one-hectare to the Council for the provision of a primary school. A one-hectare site can facilitate a 210 place school with nursery unit. It is anticipated that the additional housing from the developments will increase demand in the area by an estimated 70 places for nursery age children, 194 places for primary age children, of which 162 are likely to require English medium provision, and 174 places for secondary age children.

Based on current projections to include both housing developments, by 2023 there is an anticipated shortfall of 90 primary school places in the Rhose area. The north-west development commenced in June 2017 with development to the north-east less certain, however the developer has confirmed their intention to proceed. Pupil projections have assumed that the development to the north-east will commence in 2020. Following due consideration it is considered to be a more cost-effective to plan for the non-confirmed housing development as part of this proposal, due to the length of time required to consult, agree and if approved build a new school, particularly with regard to the requirements put in place to access the necessary funding from Welsh Government.

Rhws Primary School is a grade 2 listed building. The school is part of the Victorian Schools project and is receiving phased investment via the Council's Capital Investment Programme. An additional four-classroom block accommodating Key Stage 2 classes was built in 2009 to manage the increase in demand from the original Rhose Point development. The school site is restricted in size and potential for further development opportunities are limited. This school would therefore not be able to accommodate the total projected increase in pupils.

In order to meet future demand, ensure best use of resources and reduce overall surplus capacity in line with Welsh Government targets, it is proposed to migrate Llancafán Primary School to a new, larger school building in the Rhose development. Catchment areas would be redefined to distribute the current catchment area of Llancafán Primary School amongst Rhws, Llanfair, St Athan and St Nicholas Primary schools, and to also realign existing catchment areas in Rhose in order to accommodate the new school site. Existing and future pupils in Rhose will sustain both Rhws Primary and Llancafán Primary Schools.



## The Proposal

The Council is proposing to build a new school building for Llancarfan Primary School which would be located in Rhoose. The Council would facilitate the migration of Llancarfan Primary School into the new school building through Band B of the 21st Century Schools Programme. This would be a 210 place primary school building with a 48 part time place nursery class changing the age range of the school from a 4-11 year old school to a school educating 3-11 year olds.

The Council must ensure that schools serve their local communities and are reflective of demand. There is a need to meet future demand from the new housing developments in Rhoose and ensure both schools serve their communities. A new 210 place school, which is the minimum size for a school to be efficient and also the minimum size school the Council would build from a sustainability perspective, would accommodate the projected increase in pupils numbers from both new developments in Rhoose, in addition to the projected pupil numbers that would migrate over from the existing site of Llancarfan Primary School. Reviewing the wider needs of the Western Vale offers an opportunity to establish a new 21st century school building while addressing community need and surplus capacity challenges.

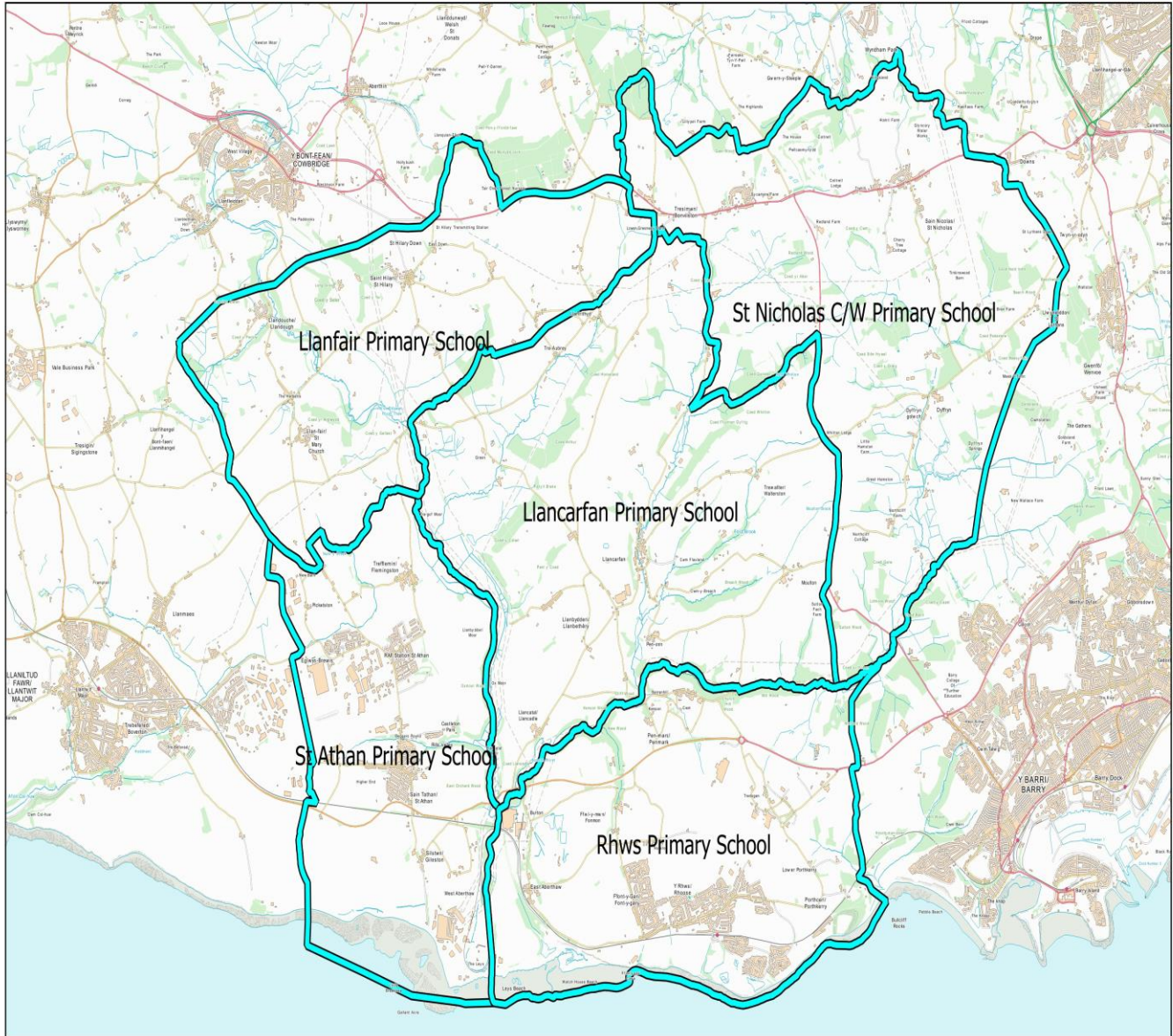
All staff and pupils would transfer to the new school building and the governing body would remain unchanged. Careful planning and management of any transitional arrangements would be necessary to mitigate the challenges of pupils moving in to the area between 2018 and 2021, ensuring no disadvantage to pupils moving to the new school or negative impact on the current good performance of Llancarfan Primary School.

The Council recognises the importance of continuity for current pupils and parents of Llancarfan Primary School affected by the proposal. The Council will operate a transitional admissions arrangements policy for Llancarfan pupils on roll at the school up to migration to the new site which is anticipated to be September 2021. This will include all pupils admitted to the school up to and including entry to reception in September 2020. The Council's intention is to honour the feeder arrangements and catchment area links to Cowbridge for Llancarfan Primary School pupils on roll up to migration through to when pupils leave the school. Applications for a reception place after migration from siblings of pupils on roll at the school on the date of migration would be considered a high priority as part of the existing admissions oversubscription criteria. This reflects the Council's commitment to ensure that wherever possible children with siblings who are affected by the change in catchment areas can attend Llancarfan Primary School wherever possible providing parents apply for a place and the siblings are on roll at Llancarfan at the same time. Please refer to page 23 detailing admissions and catchment area arrangements.

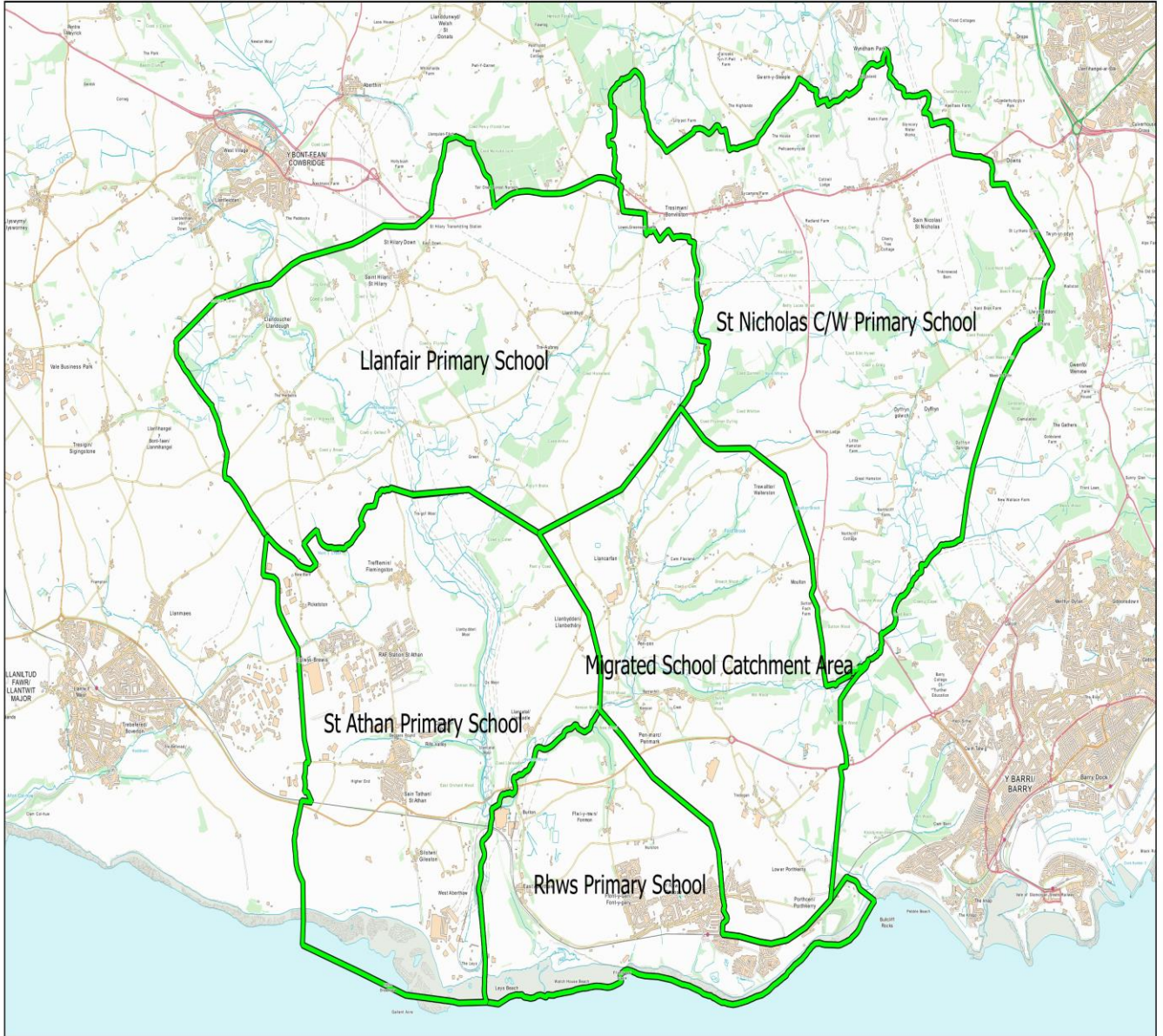
The Council proposes that the new school building and migration of Llancarfan Primary School will operate open from September 2021.

# CURRENT AND PROPOSED CATCHMENT AREA MAP

## Current Primary School Catchment Areas



# Proposed Primary School Catchment Areas



## Schools serving the Llancafán and Rhose area at present

### Llancafán Area

School	Medium	Status	Age	Location	Nursery Provision
Llancafán	English	Community School	4 - 11	Llancafán	No
Ysgol Iolo Morganwg	Welsh	Community School	3 - 11	Cowbridge	Yes
All Saints CIW Primary School	English	Voluntary Aided	3 - 11	Barry	Yes
St Helens Catholic Primary School	English	Voluntary Aided	3 - 11	Barry	Yes
Cowbridge Comprehensive School	English	Community School	11 - 18	Cowbridge	N/A
St Richard Gwyn Roman Catholic Secondary School	English	Voluntary Aided	11 - 16	Barry	N/A
Ysgol Gymraeg Bro Morgannwg (Secondary phase)	Welsh	Community School	3 - 19	Barry	N/A
Bishop of Llandaff CIW High School	English	Voluntary Aided	11 - 18	Cardiff	N/A

### Rhose Area

School	Medium	Status	Age	Location	Nursery Provision
Rhws Primary School	English	Community School	3 - 11	Rhose	Yes
Ysgol Gymraeg Dewi Sant	Welsh	Community School	3 - 11	Llantwit Major	Yes
All Saints CIW Primary School	English	Voluntary Aided	3 - 11	Barry	Yes
St Helens Catholic Primary School	English	Voluntary Aided	3 - 11	Barry	Yes
Barry Comprehensive School	English	Community School	11 - 18	Barry	N/A
Bryn Hafren Comprehensive School	English	Community School	11 - 18	Barry	N/A
Llantwit Major School	English	Community School	11 - 18	Llantwit Major	N/A
St Richard Gwyn Catholic Secondary School	English	Voluntary Aided	11 - 16	Barry	N/A
Ysgol Gymraeg Bro Morgannwg (Secondary phase)	Welsh	Community School	3 - 19	Barry	N/A
Bishop of Llandaff CIW High School	English	Voluntary Aided	11 - 18	Cardiff	N/A

## Why are we proposing the changes?

Llancarfan is a relatively small rural school with admission number of 18. Mixed age teaching is therefore necessary in managing classes with associated difficulties in terms of the planning and delivery of the national curriculum that necessitates mixed age teaching. An admission number of 18 with mixed age classes also makes it difficult to manage statutory class size limits of 30.

The school has a catchment area population of 55 children set against a capacity of 126 places. Only 31 of the 55 primary aged children living in the catchment area attend the school. Migrating the school to larger accommodation with a new catchment area with sustainable numbers would enable the school to continue its success while catering for a greater school population. Additional pupils would also provide additional revenue for Llancarfan Primary School.

Llancarfan Primary School incurs a high revenue cost per child at £4,490 per child compared to the Vale average of £3,697 per child. Llancarfan is the 5th highest primary school in terms of revenue cost per child.

Llancarfan Primary School has a capacity of 126 pupils. The majority of pupils attending the school reside outside the catchment area. There are 106 children currently on roll, of which 31 (29%) live in the school catchment area. The remaining 75 children (71%) live outside the school catchment area. 36 (34%) out of the 75 pupils residing out of catchment live in the Rhws Primary School catchment area.

Over the last three years, an average of 4 children have been born in the Llancarfan Primary School catchment area each year compared to 18 places available at the reception intake.

Migrating the school would address a number of challenges:

- The staff and pupils at the existing Llancarfan Primary School site would benefit from a new school building which meets 21st century school standards.
- Increased surplus capacity at Llancarfan Primary School would be addressed.
- Increasing demand for pupil places within the Rhoose area would be met.
- The proposed revisions to catchment areas within the Western Vale are expected to increase pupil numbers at other schools, improving future sustainability and contributing to the Council's commitment to reduce surplus capacity in its schools.
- Small site issues associated with a school on a confined site such as a lack of outdoor sporting facilities would be addressed.
- Congested access to the school through the village and lanes would be addressed.
- A nursery would be established supporting continuity and progression in children's learning from age 3. This would support stability of numbers for the school.

The establishment of a 3 - 11 year old phase primary school with nursery unit offers a more efficient and sustainable model of delivery to improve the delivery of education for the 21st Century that meets national building standards and reduces the recurrent costs and carbon footprint of education buildings. The new building will meet BREEAM (Building Research Establishment Environmental Assessment Method) Excellent standards and be built to an EPC (Energy Performance Certificate) A rating.

## Information about the schools

### Current catchment area schools of pupils attending Llancarfan and Rhws Primary School

The following table shows the number of children currently attending Llancarfan and Rhws Primary Schools and their designated catchment area schools.

School	Number on Roll	Number of children attending from respective catchment area schools						
		Llancarfan catchment	Rhws catchment	Barry catchment schools	Llantwit catchment schools	Cowbridge catchment schools	Penarth/Dinas catchment schools	other
Llancarfan Primary School	106	31	36	14	22	2	0	1
Rhws Primary School	372	0	347	16	6	2	1	0

Table 3 - Breakdown of pupils attending Llancarfan and Rhws Primary Schools January 2018

### Current demand for places – Llancarfan Primary school

General School Information							
School	Type of school	Language category	Admission number	School capacity	Number on roll	Age range	Part – time nursery places
Llancarfan Primary School	Community School	English Medium	18	126	106	4 - 11	N/A
Rhws Primary School	Community School	English Medium	53	375	372	3 - 11	90

Table 4 - Capacity and catchment Information - January 2018

Current Level of Surplus Places				
School	School capacity	Number on roll	Surplus places	% of Surplus places
Llancarfan Primary School	126	106	20	16% (target<10%)
Rhws Primary School	375	372	4	1% (target<10%)

Table 5 - Data as at January 2018

### Demand for school places

The following table provides the recent number on roll data, and projected number on roll data.

Recent number on roll data, and projected number on roll data											
School	Current School Capacity	January 2014	January 2015	January 2016	January 2017	January 2018	2018/19 Projection	2019/20 Projection	2020/21 Projections	2021/22 Projections	2022/23 Projections
Llancarfan Primary school	126	116	115	104	104	106	105	101	97	94	98
Rhws Primary school (excluding housing)	375	338	354	353	363	372	365	340	341	349	355

Table 6 – Recent and projected number on roll as at January 2018

**Housing Development** Pupil Projections for Rhws Primary School including housing developments in Rhoose

		Pupil Projections including north-west and north-east housing development in Rhoose				
School	School capacity	2018/19	2019/20	2020/21	2021/22	2022/23
Rhws Primary School	375	376	373	405	451	465

Table7 – Projected number on roll for Rhws Primary School

By 2023 there is an anticipated shortfall of 90 primary school places as a result of the planned housing developments in Rhoose

**Current performance**

The Vale of Glamorgan Council works closely with the governing bodies of schools to ensure that standards are robust, that teaching and learning is of a high quality and that leadership and governance is strong. The Council works with two organisations in order to monitor the performance of schools and to support school improvement.

Estyn is the office of Her Majesty’s Chief Inspector of Education and Training in Wales. It is a Crown body, established under the Education Act 1992. Estyn is independent of the National Assembly for Wales but receives its funding from the Welsh Government under section 104 of the Government Wales Act 1998. Estyn inspects quality and standards in education and training providers in Wales.

Central South Consortium Joint Education Service (CSCJES) was established in September 2012. The Local Authority works with the Consortium to support and challenge all schools in the Vale of Glamorgan.

Schools are inspected as part of a national programme of school inspection. The purpose of an inspection is to identify good features and shortcomings in schools in order that they may improve the quality of education offered and raise the standards achieved by their pupils (*Estyn*).

In September 2017 a new Estyn School Inspection Common Inspection Framework (CIF) was introduced across all schools in Wales. During each school inspection, judgements are made under five inspection areas:

1. standards
2. wellbeing and attitudes to learning
3. teaching and learning experiences
4. care, support and guidance
5. leadership and management

Inspectors also provided an overall judgement on the school’s current performance and on its prospects for improvement. In these evaluations, inspectors use a four-point scale.

Judgement	What the judgement means
Excellent	Very strong, sustained performance and practice
Good	Strong features, although minor aspects may require improvement
Adequate and needs improvement	Strengths outweigh weaknesses, but important aspects require improvement
Unsatisfactory	<ul style="list-style-type: none"> <li>Important weaknesses outweigh strengths.</li> </ul>

Table 8 – Estyn Inspection Criteria

Llancarfan Primary School was inspected by Estyn in March 2014.

### Estyn Report

The inspection assessed the school current performance as “**Good**” and the school’s prospects for improvement as “**Good**”.

Table of grades awarded by Estyn.

KQ	Quality Indicator	Estyn Judgement
1	1.1 Standards	Good
	1.2 Wellbeing	Good
2	2.1 Learning Experiences	Good
	2.2 Teaching	Adequate
	2.3 Care Support and Guidance	Good
	2.4 Learning Environment	Good
3	3.1 Leadership	Good
	3.2 Improving Quality	Good
	3.3 Partnership Work	Good
	3.4 Resource Management	Good

- Estyn reported that the school is **good** because:
- although results vary due to small cohorts, pupil performance at the end of key stage 2 at both the expected and higher levels has mainly placed the school in the top 25% or higher 50% of similar schools over the last five years;
- nearly all pupils make good progress from their starting points;
- standards in literacy and numeracy are good overall;
- most pupils make good progress in speaking Welsh;
- pupils’ behaviour is good overall;
- learning experiences are broad and balanced;
- there is good quality care, support and guidance for pupils;
- and the learning environment is varied and stimulating.

The school’s prospects for improvement are **good** because :

- the headteacher provides purposeful and sensitive leadership and has developed a clear strategic direction for the school;
- the school has introduced several beneficial initiatives recently that are helping to



- move the school forward;
- the senior management team has a good knowledge of the strengths of the school and the areas where it needs to improve;
- governors are very knowledgeable and supportive, yet hold the school to account effectively;
- the school has established a robust self-evaluation system; and
- the school works with a wide range of partners successfully.

There are no plans for amalgamation or federation as part of this proposal.

The inspection report for Llancafarn Primary School can be found at:  
<http://www.estyn.gov.wales/provider/6732126>

### Welsh Government categorisation of schools

In 2014 Welsh Government introduced a new categorisation system for schools. This was revised in September 2017. Categorisation now considers each school's standards alongside the school's capacity to improve in order to determine the level of support required. Organisations such as the CSCJES and the school improvement service then work with schools' leaders to identify provide and/or broker any support required for further improvement.

The categorisation system is described below:

Category	What the category means
Green	A highly effective school which is well run has strong leadership and is clear about its priorities for improvement.
Yellow	An effective school which is already doing well and knows the areas it needs to improve.
Amber	A school in need of improvement which needs help to identify the steps to improve or to make change happen more quickly.
Red	A school in need of greatest improvement and will receive immediate, intensive support.

Table 9 – Welsh Government Criteria

To determine the support category as explained in the table above, schools are placed in one of four groups for ability to bring about improvement (A-D) with A being the highest for improvement capacity.

For further information about the new categorisation scheme, please see Welsh Government's parents' guide to the National School Categorisation System:  
<http://gov.wales/docs/dcells/publications/150119-parents-guide-en.pdf>

School	Standards Grade	Improvement Capacity	Overall Category
Llancafarn Primary	2	B	Yellow

Table 10 - Standards and improvement categories - January 2018

## The intended impact on education outcomes

The proposals are intended to create a new building for the school with a capacity for 210 pupils plus a nursery unit for 48 pupils providing an all-through primary provision for 3 -11 year olds.

### Outcomes (standards and wellbeing)

The school is very well led by the Headteacher and the deputy Headteacher. The school has a robust timetable of self-evaluation activities which involve all leaders and staff. Planning at Llancarfan Primary School is thorough and effective in driving forward improvements with clear links to local and national priorities. Priorities rightly identify the need to improve performance such as developing Welsh language throughout the school.

The school has set challenging whole school targets and nearly all 2016-2017 outcomes in the Foundation Phase and Key Stage 2 met or exceeded the targets set.

The school has effective processes for identifying pupils who require support in literacy and numeracy which includes the analysis of vulnerable groups. Additional plans are in place for pupils with additional educational needs including more able and talented.

The School continues to increase the proportion of excellent teaching by working closely with other schools. The tracking of pupil data is effective in improving outcomes for pupils and improving standards of learning and teaching. The quality of teaching across the school, and the impact on most pupils' learning and progress, is consistently good with elements of excellent across the school.

There is a clear focus on raising standards. Targets reflect high expectations for the achievement of all pupils and these are met consistently. All staff have well defined roles and responsibilities and exhibit high professional standards.

### Targets for improvement

The school has several targets for improvement. These are to;

- Continue to work with other schools on moving from an assessment of good teaching to excellent.
- Continue work on increasing the number of pupils achieving Level 5.
- Implement strategies to ensure the performance at L5 is above the median and in line with performance in English and Science.
- Improve attendance.
- Developed improved Transition for Y6.
- Further improve More Able and Talented practice across the school.

### Provision

This proposal will develop continuity and progression in children's learning from the age of three. A consistent approach to the planning and delivery of the foundation phase (nursery to year two) would be enhanced through the establishment of a nursery unit. The already well-developed holistic approach could be embedded from an early age.

A new building will allow for further development of a curriculum filled with rich experiences that challenge children, raise attainment and develop interpersonal relationships. This will support the development of a nursery provision extending the school to deliver education to pupils aged 3 - 11, allowing all learners to achieve success.

### **Leadership and governance**

Leaders and staff already make highly effective use of performance data; evidence about the quality of learning and teaching and pupils' work is used effectively to identify strengths and improvement priorities. Processes to track pupils' progress are rigorous and robust.

Governors receive reports on pupils' and staff performance. Governors use assessment and performance information to monitor the performance of the school. They show determination in challenging and supporting the school in bringing about necessary improvements. Named governors are linked to areas of the School Improvement Plan and are active in the daily life of school taking part in monitoring activities and staff training sessions. The Headteacher reports regularly on progress towards targets outlined in the School Improvement Plan and support the governors in fulfilling their function.

The Senior Leadership Team and all stakeholders share a clear vision for school improvement and commitment to improving outcomes for all pupils. All leaders and staff have well-defined roles and priority is given to ensuring that all staff are skilled and have opportunities to develop best practice. Mentoring and coaching practices are being used to develop teaching. Pupil voice is embedded in the practice of the school and impact on policy and practice is evident. Significant changes in staff have been well managed and the school has a permanent Deputy and 3 Class Teachers.

This proposal would support the school's leadership in continuing to be highly effective and consistent, developing approaches to support learners throughout the extended foundation phase. This would include;

Continuity in tracking, monitoring and intervention processes from an earlier age would lead to a smoother transition between nursery and reception, in turn leading to raised standards.

Careful planning will take place during the proposed transition period to avoid any risk of distraction that could impact on educational outcomes.

This proposal will support the continuation of these examples of good practise by proposing that all staff and governors transfer to the new school building.

### **The condition of school buildings and facilities**

The Vale of Glamorgan Council has a vision to provide the best possible facilities for the young people in the Vale to support their learning. The Welsh Government undertook condition surveys of all schools during 2010 which judged the condition of the school as good. Every five years the Council undertakes a condition survey of all the schools across the Vale of Glamorgan. The latest survey of the school was undertaken in April 2014.

A condition survey involves a visual assessment of all exposed parts of the buildings to identify significant defects and items of disrepair.

School	Type of school	Condition of school building	Cost of identified repairs
Llancarfan	Community	Good	£145,000

Table 11 - Condition survey outcomes April 2014

The report noted that there needs to be a low level of investment required to ensure that the standard of high quality provision is maintained.

The existing maintenance demands at the school include the interlinking of the fire alarm systems, external stonework repairs, toilet refurbishment and upgrading of electric space heaters as well as general maintenance. The proposed new school will provide:

- A high quality IT rich learning environment for pupils meeting the educational curriculum needs of the 21<sup>st</sup> Century.
- Unobstructed access between all internal areas for children and staff as the new school will be contained within a single building.
- Enhanced safeguarding and site security for pupils and staff.
- Improved outdoor sports facilities for both pupil and community use.
- Full access for the whole community with improved disabled access.

#### How would other schools be affected?

The proposal is unlikely to have a significant impact on any other schools in the local area. Whilst the Council is increasing the number of places, the current capacity in the Rhoose area will not be able to meet the future demand for school places from the new housing development in the area.

The existing Primary School in Rhoose is nearing its maximum capacity. This proposal has been presented in order to meet future demand, ensure best use of resources and reduce overall surplus capacity in line with Welsh Government targets. Catchment areas would be redefined to distribute the current catchment area of Llancarfan Primary School amongst Rhws, Llanfair, St Athan and St Nicholas Primary schools, and to also realign existing catchment areas in Rhoose to accommodate the new school site and allow schools to better serve their community. A revision to school catchment areas is expected to also increase pupil numbers at other schools improving future sustainability of those schools and contributing to the Councils commitment to reduce surplus capacity in its schools. Currently 21% of pupils attending St Nicholas Primary School live in its catchment area, 44% of pupils attending Llanfair Primary School live in its catchment area and 39% of pupils attending St Athan Primary School live in the school catchment area

There is currently no nursery provision at Llancarfan Primary School. The overall number of nursery places will increase in the area to take account of the new housing developments planned.

#### Changes to Catchment Areas

The current catchment area of Llancarfan Primary School would need to be redrawn. The proposal would distribute the current catchment area between the migrated Llancarfan Primary school in Rhoose, Llanfair, St Athan and St Nicholas Primary schools. A realignment of the

existing catchment area of Rhws Primary School would also be necessary to provide an even distribution of pupils in Rhoose to serve both schools.

The revisions to catchment areas are expected to increase pupil numbers for other schools, improving future sustainability and contributing to the Council's commitment to reduce surplus capacity in its schools.

Projected Pupil Numbers						
School	School Capacity	January 2019	January 2020	January 2021	January 2022	January 2023
Llanfair	129	122	120	118	114	113
St Nicholas	126	122	120	118	114	113
St Athan	210	188	195	196	196	197

Table 12 – Projected pupil numbers

### How would Additional Learning Needs (ALN) provision be affected?

The school does not have an attached specialist resource base; it provides specialist support for children who have identified needs in an inclusive setting within the school.

The following table provides information about the needs of current pupils.

2017		Llancarfan	LA	Wales
Percentage of ALN Pupils	School Action	14.4%	8.7%	14.2%
	School Action Plus	2.8%	5.2%	10.4%
	Statemented	0%	0.4%	2.4%

Table 6 - Outline of ALN need for children of compulsory school age PLASC January 2017

The school provides a targeted and bespoke curriculum which is responsive to the individual child's abilities and ensures that all children who require additional support are integrated across all areas of the curriculum.

### What are the advantages of these proposals?

Llancarfan is a relatively small rural school with an admission number of 18. Mixed age teaching is therefore necessary in managing classes with associated difficulties in terms of the planning and delivery of the national curriculum. An admission number of 18 with mixed age classes also make it difficult to manage statutory class size limits of 30. The school has a catchment area population of only 55 children set against a capacity of 126 places, of which only 32 attend the school. Migrating the school to larger accommodation with a new catchment with sustainable numbers would;

Enable the school to continue its success while catering for a greater pupil population.

Provide innovative and creative learning environments which are adaptable to change and will challenge and support children to reach their full potential.

Maintain and increase the level of community access and interaction through the use of the school's educational facilities whilst meeting the needs of the school.

The establishment of a 3 - 11 year old phase primary school with nursery unit offers a more efficient and sustainable model of delivery to improve the delivery of education for the 21st

Century that meets national building standards and reduces the recurrent costs and carbon footprint of education buildings. The new building will meet BREEAM (Building Research Establishment Environmental Assessment Method) Excellent standards and be built to an EPC (Energy Performance Certificate) A rating.

The ethos and culture of the school will be developed in children from an earlier age, leading to effective interpersonal relationships and higher self-esteem.

A consistent approach from 3-11 years will promote and underpin continuity and progression for pupils, ensuring breadth and balance across the curriculum.

Curriculum planning and resourcing will build successfully on previous pupil knowledge and experience and engage interest.

Pupils will be able to develop their ability to learn new skills and apply their subject knowledge more positively and creatively across a continuum of learning.

The already good arrangements for the care support and guidance of pupils will be fostered from an earlier age.

Extending and developing partnerships with families from the earliest opportunity to strengthen home / school transition.

### **What are the potential disadvantages of these proposals?**

A small school ethos maybe lost in a larger school.

There may be a perceived impact on the community of Llancarfan village.

Management of staff and resources maybe disrupted during migration.

The creation of a Nursery unit within the school has the potential to affect numbers at other nursery units and schools in the area.

Some pupils living closer to the current school site will have further to travel. There may be associated increased costs with this although there are already a number of pupils who are provided with free transport from Rhoose to Llancarfan Primary School who would not be entitled to free transport on migration if they live closer than two miles to the new school site.

There is the potential for disruption for pupils and staff as they become accustomed to their new environment.

### **Transition plan if the proposals are approved**

The Council's proposals mean that all pupils, staff and governors could transfer to the new school site with the addition of a nursery unit in September 2021. It is proposed that transitional arrangements would apply to existing Llancarfan Primary School pupils on migration. The Council's intention is to honour the feeder arrangements and catchment area links to Cowbridge for Llancarfan Primary School pupils who are on roll at the school on migration up until they leave. Any pupils joining Llancarfan Primary School after the migration to the new site would be subject to the agreed admission arrangements in place at that time.

Transportation is currently provided for pupils travelling to Llancafán from the Rhose and Cowbridge area. This would continue for those children subject to the two mile limit eligibility criterion for free school transport for primary age children.

### **Risks associated with the proposals**

The Council has secured 50% of funding for the proposal under Band B of the Welsh Government 21<sup>st</sup> Century Programme subject to approval of a business case. The remaining funding for the building of the new school building is dependent on Section 106 education contributions from the development completed at land south of the Railway Line, and the developments at land north-west and north-east of the Railway Line along with some capital funding from the Council. The success of this proposal is therefore dependant on the sale of the houses on these developments.

### **Alternatives considered**

A number of options have been considered as part of this proposal, which include:

#### **Extending the current school site**

There is not sufficient space to extend the current school site.

#### **Extending Rhws Primary School**

There is not sufficient space to extend the school site to manage the additional school places required. This would also not address the capacity issues at Llancafán Primary School.

#### **Maintaining the status quo**

Maintaining the status quo is not an option. Based on current projections, by 2023 there is an anticipated shortfall of 90 primary school places in the Rhose area. In addition, the number of children living in Llancafán is decreasing which will further challenge the efficiency and sustainability of Llancafán Primary School.

### **Admissions and catchment area arrangements**

#### **Admission arrangements for nursery education**

The Vale of Glamorgan Council will be the admissions authority responsible for allocating nursery places. Places will be offered to children who are three years old up to the approved capacity of the school's nursery and in line with the oversubscription criteria in place at the time of allocation. Applications for a nursery place from siblings of pupils on roll at the school on the date of admission would be considered a high priority. The Council's admission criteria will reflect this by establishing transitional arrangements for children with siblings who are affected by the change in catchment areas to ensure that if requested by parents both siblings can

attend Llancafarn Primary School wherever possible providing they will be attending the school at the same time.

### **Admission arrangements for reception year**

As is the case under existing arrangements, children attending a nursery class will not have an automatic right to continued education at the same school when moving into the reception class, whether residing within or outside the catchment area. Applications to join the reception class will follow the same procedures as previously in place for the school. All parents are required to express a preference by applying for the school they wish their child to attend/transfer to, even if it is a catchment area school. Where there are more applications than there are places, places will be allocated applying the Council's oversubscription criteria.

As part of this consultation it is proposed that applications for a reception place from siblings of pupils on roll at the new school site on the date of admission would be considered a high priority. The Council's admission criteria will reflect this by establishing transitional arrangements for children with siblings who are affected by the change in catchment areas to ensure that if requested by parents both siblings can attend Llancafarn Primary School wherever possible providing they will be attending the school at the same time.

### **Transfer to Secondary School transition arrangements for existing pupils**

The Vale of Glamorgan Council is the admissions authority responsible for allocating school places. Llancafarn Primary School pupils who are on roll on the date of the migration to the new school building will be considered to attend a feeder school for Cowbridge Comprehensive School. This reflects the admission arrangements currently in place. The admission arrangements for pupils joining the school after the migration to the new school building will be as publicised in the admission arrangements policy in place at that time. Catchment areas and feeder school arrangements for admission to secondary school would need to be reviewed in order to ensure that all schools appropriately serve their local community.

Full details of all schools within the Vale of Glamorgan and the application process can be found in the **Parental Guide to School Admissions in the Vale**. This document is published annually in order to reflect the admission arrangements in place for the following year. This document can be found at

[http://www.valeofglamorgan.gov.uk/en/working/education\\_and\\_skills/schools/admissions/school%20admissions.aspx](http://www.valeofglamorgan.gov.uk/en/working/education_and_skills/schools/admissions/school%20admissions.aspx)

### **Finance – capital investment**

Subject to the approval of this proposal, a significant capital investment will be made to establish a new school building for Llancafarn Primary School. The Council will manage the process and the governing body, staff, parents and pupils of Llancafarn Primary School will be fully engaged in the development of the plans. The Council will also be responsible for managing the construction.

It is estimated that the total capital funding required to build a new school on a green field site, including the installation of utilities services and highways provision, will be £4.185 million. The Council is expected to receive £2.0925 million in Welsh Government Band B match funding through the 21st Century Schools Programme for this project. There will be a total of £1.639



million in Section 106 contributions for educational facilities in Rhose from two developments. The balance will be met from the Council's capital funding.

### **Finance – running costs**

Additional revenue funding of £55,000 will be required to meet the operational costs of the new school. The additional revenue costs of the increased pupil numbers at nursery and primary stages will be met through the school funding formula which allocates the majority of funding for schools on the basis of pupil numbers.

### **Human Resources**

It is not anticipated that there would be any adverse impacts for staff as they would simply transfer to a new building. This proposal would lead to an increase in employment opportunities at the school as additional pupil numbers would lead to an increase in future staffing levels. If migration to the new school site takes place and a nursery is established at the school, the governing body and headteacher would need to develop an increased staffing structure for the extended foundation phase and increase in pupil numbers from September 2021. Any proposed changes to staffing would be subject to full consultation with staff and the relevant trades unions where necessary.

The Vale of Glamorgan Council fully supports the governors, headteacher and staff at the school with any employment related matters. The school has access to the Council's Human Resources policies and procedures, including recruitment policies. The Human Resources service works closely with governors to ensure regular and clear communication with all employees takes place on all matters relating to a change in location of their workplace.

### **Transport**

Traffic and transport implications are being considered as part of the Transport Assessment that will be required in order to achieve planning consent for the building works should this proposal be implemented.

### **Learner travel arrangements**

The Vale of Glamorgan Council does not provide free school transport for nursery-age children other than those children who have a Statement of Special Educational Needs (SEN). Under these proposals there are no plans to change the Council's policy on the transport of children to and from schools.

The Council has a statutory duty to provide free school transport for pupils of statutory school age who reside beyond walking distance to the nearest appropriate school.<sup>1</sup>

*"This is defined as more than 2 miles to the nearest suitable school for Primary Pupils and more than 3 miles for Secondary School Pupils. Distances are measured by the nearest available walking route."<sup>2</sup>*

---

<sup>1</sup>Policy For The Provision Of Home To School Transport (Revised February 2010)

<sup>2</sup>The Learner Travel (Wales) Measure 2008

Any pupil attending Llancarfan Primary School on the date of migration to the new site who lives more than 2 miles from the new school site would therefore be entitled to free school transport. Any pupils who no longer live 2 miles from the new Llancarfan Primary School site as a result of the relocation would no longer be entitled to free school transport. The admission transition arrangements proposed as part of this consultation would be reflected in the provision of transport. This would support children with siblings who are affected by the change in catchment areas to ensure that if requested by parents both siblings can receive transport to the new Llancarfan Primary School site providing they will be attending the school at the same time and live more than two miles from the new school site.

[http://www.valeofglamorgan.gov.uk/en/living/transportation/school\\_transport/School-Transport.aspx](http://www.valeofglamorgan.gov.uk/en/living/transportation/school_transport/School-Transport.aspx)

### **Impact of the proposal on the Welsh Language**

Parental demand for Welsh medium primary education will continue to be provided through the catchment area school Ysgol Dewi Sant. There is existing capacity in the area for Welsh medium education

Llancarfan Primary School is an English medium school and this proposal does not seek to change this.

### **Equality impact assessment**

An Equality Impact Assessment will be carried out on completion of this consultation and will be published alongside the Consultation Report

### **Considering community impact**

Based on current projections, by 2023 there is an anticipated shortfall of 90 primary school places in the Rhoose area. This proposal seeks to address this shortfall.

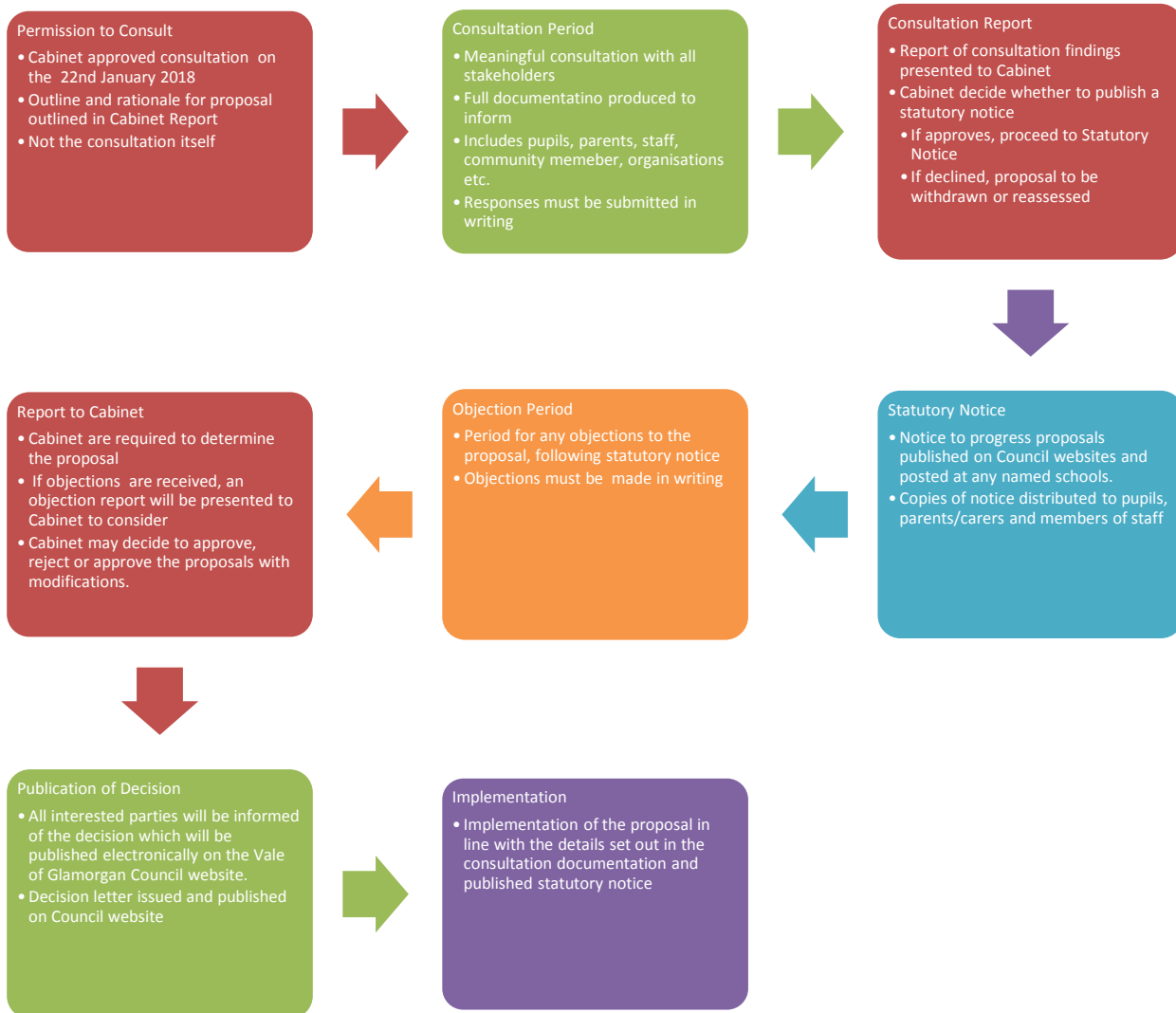
The establishment of a nursery class within the school will enhance the impact of the school on the community by providing more opportunities for families with pre-school children to become part of the school at an earlier age.

The school will continue to offer activities for pupils and the community outside school hours. Community use of school facilities is a key requirement of the 21<sup>st</sup> Century Schools Programme. Consideration will be given as part of the design of the new school about the type of facilities and how this can complement the existing facilities in the area. The local community does not currently utilise the schools facilities. The current facilities available for pupils will be significantly enhanced by these proposals.

The full Community Impact Assessment can be viewed via the following link [www.valeofglamorgan.gov.uk/westernvalereconfiguration](http://www.valeofglamorgan.gov.uk/westernvalereconfiguration)

## The Road to a decision

You will find below a flow chart of the process that is followed in order to meet statutory requirements for this proposal.



## Key dates

Feedback from this consultation will be collated and summarised and a report presented to Cabinet. The consultation report will be available for everybody to view on the school's and the Council's website. Copies can also be obtained on request by using the contact details within this document.

There are further stages that the Council will have to go through before a final decision is made. These stages are set out below:

<b>Statutory Process</b>	<b>Timescale</b>
Issue consultation document	Monday 5 March 2018
Closing date for views on the proposals	Friday 20 April 2018
Consultation report considered by Cabinet and published on the school and Council's website	June 2018
Statutory notice issued during which time formal written objections will be invited	25 June 2018
End of Statutory Notice Period	23 July 2018
Determination by Cabinet with objection report.	September 2018
Decision notification	October 2018
Proposed migration to the new school building for Llancafán including the establishment of a nursery unit.	September 2021

Table 14 - Timetable for consultation

### **Consultation period**

The consultation period for this proposal starts on Monday 5 March 2018 and ends on Friday 20 April 2018. See page 6 for further details of how to respond and make your views known.

Within 13 weeks of Friday 20 April 2018 a consultation report will be published on the Council's and school's websites. Hard copies of the report will also be available from the school office on request. The report will summarise the issues raised by consultees during the consultation period and responses to these issues. The report will also contain Estyn's view of the proposals. In June 2018 Cabinet will consider the consultation report and decide whether or not to proceed with the proposals.

If the Council decides to continue with the proposals it must publish a statutory notice.

### **Statutory Notice**

The statutory notice would be published on the Vale of Glamorgan Council website and posted at or near the main entrance to Llancafán Primary School. Copies of the notice will be distributed to pupils, parents, guardians, and staff members. The school may also distribute the notice by email. The notice will set out the details of the proposals and invite anyone who wishes to object to do so in writing within the specified period.

## Determination of the proposals

The Council will determine the proposals. Cabinet may decide to approve, reject or approve the proposals with modifications. In doing so, the Council will take into account any statutory objections that it has received.

## Decision Notification

Following determination of proposals all interested parties will be informed of the decision which will be published electronically on the Vale of Glamorgan Council website.

## Frequently Asked Questions

### *Are you planning to close Llanccarfan Primary School?*

The proposal seeks to move the existing school into a new, larger school building in line with Welsh Government's 21<sup>st</sup> Century Schools Programme. The proposals do not include any plans to close Llanccarfan Primary School. The proposed new school building for Llanccarfan Primary School would also be able to accommodate an increase in demand for pupil places in the Western Vale, primarily from new developments in the Rhoose area. Existing staff, governors and pupils at Llanccarfan Primary School would move into the new building.

### *Can you build a new school in Llanccarfan?*

There are a number of inherent limitations associated with the existing Victorian school building itself and the land upon which it sits, that would prevent a new build. The existing provision falls short of a 21<sup>st</sup> century learning environment.

Llanccarfan has a small catchment population compared to its overall capacity to accommodate children. The existing Rhws Primary School is approaching maximum capacity, and over one-third of children attending Llanccarfan come from the Rhoose area. Only 30% of the pupil population at Llanccarfan come from within the Llanccarfan catchment area. 70% come from outside the catchment area.

### *How would Rhws Primary School cope with having another primary school in the area?*

This proposal provides a unique opportunity to not only migrate Llanccarfan primary school into a new 21<sup>st</sup> century school building but also accommodate children from the new housing development in Rhoose. The existing Primary School in Rhoose is nearing its maximum capacity and will be unable to accommodate these children. Rhws Primary School is approximately a mile away from the proposed location of the new school site. There are no plans as part of this proposal for an amalgamation with Rhws Primary.

### *What commitment for existing children at Llanccarfan Primary School will be honoured?*

It will be proposed as part of the consultation for the new school building and as part of consultations on future admission arrangements that transitional arrangements will apply to existing Llanccarfan Primary School pupils on migration. The Council's intention is to honour the feeder arrangements and catchment area links to Cowbridge for existing Llanccarfan Primary School pupils on migration up until they leave the school. Siblings of pupils attending the school on migration will also have a high priority for admission to Llanccarfan Primary School once they reach school age. This will be part of the oversubscription criteria in place.

*Would the same rights apply to pupils admitted to the school between a decision being taken to migrate Llancafarn Primary to the new school building and the actual migration?*

Subject to the outcome of statutory consultation, the intention would be to honour the existing feeder school arrangements for pupils on roll on the date of migration. With the exception of siblings, any pupils joining Llancafarn Primary School after the migration to the new site would be subject to the agreed admission arrangements in place at that time. Siblings being admitted after the migration to the new site who are affected by the change in catchment areas would have a high priority for admission under the council's admission arrangements policy.

*Would pupils from the current Llancafarn Catchment area still retain rights to admission to Cowbridge Comprehensive or would the Cowbridge Comprehensive Catchment Area be changed to exclude the catchment area of the migrated school?*

Catchment areas are traditional boundaries that are put in place to ensure that local schools service their community. Any change to the catchment area for Cowbridge Comprehensive would only take place after a review of catchment areas and the required consultation. Parents will of course always have the ability to specify their preference.

*Will there be a new headteacher?*

All staff employed at the school on the date of migration would transfer automatically to the new site with no change to their terms and conditions of employment.

*What would the admission arrangements be?*

Children are entitled to a part time nursery place from the start of the term following their third birthday and a reception place from the September after their fourth birthday. The Council is the admission authority for the school, both for nursery admissions and subsequent years. Admission arrangements are discussed on page 23 of this proposal document. Attendance at a nursery class does not automatically entitle a child to a reception place in the same school. Parents are reminded that if they are offered a place for their child within the nursery, a new application must be made for entrance into the reception class of the school. Applications for a school place after migration to the new site from siblings of pupils on roll at the school on the date of admission would be considered a high priority. The Council's admission criteria would reflect this by establishing transitional arrangements for children with siblings who are affected by the change in catchment areas to ensure that if requested by parents both siblings can attend Llancafarn Primary School wherever possible providing they are on roll at the same time.

*Will the school have a new name?*

The proposal in this document is to provide Llancafarn Primary School with a new, larger, vastly improved building, extending the age range of the school. There would be no need for the school to change its name, ethos or identity, only its location.

*Will the policies of the school change to reflect the new site and the nursery age children?*

This will be a decision of the governing body and the headteacher of the school. The school will need to consider reviewing its policies following the migration to the new building and the establishment of a nursery unit to ensure that all children in the school are covered by the school's policies.

*When would staff and pupils transfer to the new school building?*

The proposal is that the new school will open in September 2021.

## CONSULTATION RESPONSE FORM

On the proposal to reconfigure primary provision in the Western Vale by:

1. creating a new 210 place primary school building with a 48 part time place nursery class at the land north of the railway line in Rhoose;
2. migrating staff and pupils from Llancarfan Primary School into the new school building.
3. extending the age range of Llancarfan Primary school from 4-11 years to 3-11 years

Your views matter. Please tell us what you think about the proposals by:

- completing the online response form at [www.valeofglamorgan.gov.uk/westernvalereconfiguration](http://www.valeofglamorgan.gov.uk/westernvalereconfiguration)
- or
- answering the consultation questions and adding your points of view on this form

Please return the form to the postal address at the bottom of the form.

**Please note that all comments must contain the full name and full postal address of the person making the comments.**

**The closing date for responses to this consultation is Friday 20 April 2018.**

**Unfortunately no responses received after this date can be considered.**

Consultation responses will not be counted as objections to the proposals, although considered by the Council when making its decision.

Objections can only be registered following publication of a **statutory notice**.

Any responses received can be requested under the Freedom of Information Act and may have to be made public. However, any information that would identify an individual such as name, email address and postal address would be removed.

Your Name:

Address:

Postcode:

Email Address:

Date:

Please tell us whether you are responding as:

1. Parent
2. Pupil
3. Governor
4. Member of Staff
5. Local Resident
6. Other (please specify)

## CONSULTATION RESPONSE FORM

On the proposal to reconfigure primary provision in the Western Vale by:

1. creating a new 210 place primary school building with a 48 part time place nursery class at the land north of the railway line in Rhoose;
2. migrating staff and pupils from Llancafán Primary School into the new school building.
3. changing the age range of Llancafán Primary school from 4-11 years to 3-11 years.

### Questions

1. Do you support the proposal to provide a new school building with a new nursery unit for Llancafán Primary school from September 2021

Yes

No

If you support or do not support the proposal then please explain why.

2. If you would like to suggest any changes or alternatives to the proposals, please detail these below.



Any other comments?

Thank you for your comments

Please tick the box below if you wish to be notified of publication of the consultation report

Freepost RTGU-JGBH-YYJZ  
Reconfiguration of Western Vale Consultation  
Corporate and Customer Services  
The Vale of Glamorgan Council  
Civic Offices,  
Holton Road  
Barry CF63 4RU

***Please return this form to the Vale of Glamorgan Council  
No later than Friday 20 April 2018.***

**Notes on Consultation Document**

## Vale of Glamorgan Equality Monitoring Form

<b>Gender and Gender Identity</b>	
What is your gender?	<input type="checkbox"/> Female <input type="checkbox"/> Male
At birth were you described as?	<input type="checkbox"/> Female <input type="checkbox"/> Male <input type="checkbox"/> Intersex <input type="checkbox"/> Prefer not to say
<b>Disability</b>	
Are your day-to-day activities limited because of a physical or mental health condition, illness or disability which has lasted, or is expected to last, 12 months or more?	<input type="checkbox"/> Yes – limited a lot <input type="checkbox"/> Yes – limited a little <input type="checkbox"/> No <input type="checkbox"/> Prefer not to say
<b>Age</b>	
What is your date of birth?	
<b>National Identity</b>	
<b>National Identity – how would you describe your national identity?</b>	
<input type="checkbox"/> Welsh	<input type="checkbox"/> English
<input type="checkbox"/> Scottish	<input type="checkbox"/> Northern Irish
<input type="checkbox"/> British	<input type="checkbox"/> Other (please specify)
<input type="checkbox"/> Prefer not to say	
<b>Ethnic Group</b>	
<b>Ethnicity – how would you describe your ethnic group?</b>	
<b>White</b>	
<input type="checkbox"/> Welsh/English/Scottish/Northern Irish/British	<input type="checkbox"/> Irish
<input type="checkbox"/> Gypsy or Irish Traveller	<input type="checkbox"/> Any other white background (please specify):
<b>Mixed/multiple ethnic groups</b>	
<input type="checkbox"/> White and Black Caribbean	<input type="checkbox"/> White and Black African
<input type="checkbox"/> White and Asian	
<input type="checkbox"/> Any other mixed/multiple ethnic background (please specify):	
<b>Asian/Asian British</b>	
<input type="checkbox"/> Indian	<input type="checkbox"/> Pakistani
<input type="checkbox"/> Bangladeshi	<input type="checkbox"/> Chinese
<input type="checkbox"/> Any other Asian background (please specify):	
<b>Black/African/Caribbean/Black British</b>	
<input type="checkbox"/> African	<input type="checkbox"/> Caribbean
<input type="checkbox"/> Any other Black/African/Caribbean background (please specify):	
<b>Other ethnic group</b>	
<input type="checkbox"/> Arab	
<input type="checkbox"/> Any other ethnic group (please specify):	
<input type="checkbox"/> Prefer not to say	

<b>Welsh Language</b>				
<b>Please describe your Welsh language ability by ticking the relevant box(es) below.</b>				
	<b>Understand</b>	<b>Speak</b>	<b>Read</b>	<b>Write</b>
None	<input type="checkbox"/>	<input type="checkbox"/>	<input type="checkbox"/>	<input type="checkbox"/>
Basic	<input type="checkbox"/>	<input type="checkbox"/>	<input type="checkbox"/>	<input type="checkbox"/>
Competent	<input type="checkbox"/>	<input type="checkbox"/>	<input type="checkbox"/>	<input type="checkbox"/>
Good	<input type="checkbox"/>	<input type="checkbox"/>	<input type="checkbox"/>	<input type="checkbox"/>
Fluent	<input type="checkbox"/>	<input type="checkbox"/>	<input type="checkbox"/>	<input type="checkbox"/>
<b>Sexual Identity</b>				
<b>Which of the following options best describes how you think of yourself?</b>				
<input type="checkbox"/> Heterosexual / straight	<input type="checkbox"/> Gay or lesbian	<input type="checkbox"/> Bisexual		
<input type="checkbox"/> Other	<input type="checkbox"/> Prefer not to say			
<b>Religion</b>				
<b>What is your religion?</b>				
<input type="checkbox"/> No religion	<input type="checkbox"/> Christian (all denominations)	<input type="checkbox"/> Buddhist		
<input type="checkbox"/> Hindu	<input type="checkbox"/> Jewish	<input type="checkbox"/> Muslim	<input type="checkbox"/> Sikh	
<input type="checkbox"/> Any other religion (please specify):		<input type="checkbox"/> Prefer not to say		
<b>Pregnancy and Maternity</b>				
Are you currently pregnant or have you been pregnant within the last year?	<input type="checkbox"/> Yes <input type="checkbox"/> No <input type="checkbox"/> Prefer not to say			
Have you taken maternity leave within the past year?	<input type="checkbox"/> Yes <input type="checkbox"/> No <input type="checkbox"/> Prefer not to say			
<b>Marriage and Civil Partnership</b>				
What is your legal marital or same sex civil partnership status?	<input type="checkbox"/> Single, that is never married and never registered in a same sex civil partnership <input type="checkbox"/> Married and living with husband/wife <input type="checkbox"/> Separated but still legally married <input type="checkbox"/> Divorced <input type="checkbox"/> Widowed <input type="checkbox"/> In a registered same-sex civil partnership and living with your partner <input type="checkbox"/> Separated, but still legally in a same-sex civil partnership <input type="checkbox"/> Formerly in a same-sex civil partnership which is now legally dissolved <input type="checkbox"/> Surviving partner from a same-sex civil partnership <input type="checkbox"/> Prefer not to say			