

Environmental Management Manual



Regulatory Services

Contents

Introduction

[Background](#)

[Organisation structure](#)

Environmental Policy

[Environmental Policy](#)

[Environmental Statement](#)

Register of Legislation

[Register of Legislation](#) Review

[Register](#)

Managing Environmental impacts

[Register of Environmental impacts\(aspects\)](#)

[Evaluation of Environmental Impacts](#)

[Significance Evaluation](#)

[Pollution Prevention Plan](#)

[Objectives & Targets](#)

[Carbon Dioxide Report \(Energy\)](#)

[Register for Legislation Review](#)

Procedures

[EP/001 Environmental Aspects Register](#)

[EP/002 Methodology for Evaluating the Significance of all Activities on the Environmental Aspects Register.](#)

[EP/003 Dealing with Communications on Environmental issues from external parties](#)

[EP/004 Disposal of Special Waste](#)

[EP/005 Pesticide Management](#)

[EP/006 Fire at offices](#)

[EP/007 Disposal of toner cartridges](#)

[EP/008 Use of company vehicles](#)


[EP/009 Disposal of waste paper etc](#)

[EP/010 Managing Environmental Register of Legislation](#)

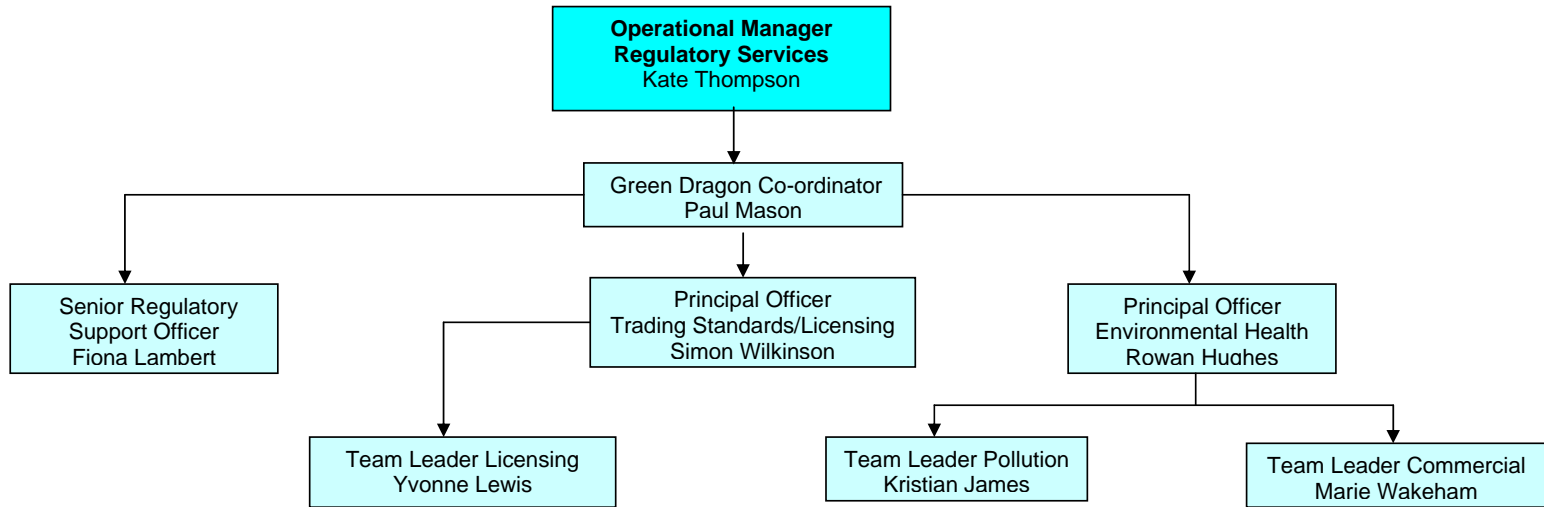
[EP/011 Staff training](#)

Environmental Review

[Environmental Review](#)

Regulatory Services	
Environmental Personnel Structure	RS/EM/05

The following persons are directly responsible for the implementation of the EMS in Regulatory Services:



ENVIRONMENTAL POLICY

The Vale of Glamorgan Council has a significant impact on the local environment. This impact arises from providing services (direct effects), for example by staff using resources and creating waste; and from influencing the environmental actions of others (indirect effects), for example by regulating, motivating and raising environmental awareness. The Council recognises its impact on the area and is committed to protecting and enhancing the environment for future generations by promoting sustainable practices and acting responsibly, considering environmental, social and economic factors in all decision making processes.

The Council is committed to continual environmental improvement and the Corporate Plan 2006-2010 details a number of key targets and aims reiterating this commitment. The three key aims identified in the Corporate Plan are the conservation and enhancement of the Environment, improvement in waste and resource management and reduction in the environmental impact of Council activities.

In all its activities the Council will endeavour to adhere to principles of sustainability and sustainable development, specifically:

- Ensure environmental legislation is complied with, and fulfil our statutory environmental responsibilities.
- Minimise the use of non-renewable resources including energy in its own buildings, vehicles and in all Council activities.
- Avoid waste and encourage the conservation, reuse and recycling of resources.
- Encourage the installation of renewable energy sources.
- Minimise environmental pollution from all its activities and influence others to do the same.
- Conserve, restore and enhance the Vale's built and natural environment, keeping it safe, diverse and pleasant.
- Reduce the need for the movement of both people and goods. Where movement is necessary, encourage the use of public transport, car sharing, cycling and walking.
- Procure and provide goods and services in a socially and environmentally responsible manner.
- Promote understanding and participation in environmental issues through education, information and community consultation.
- Provide appropriate resources and the necessary training for staff to ensure that they are able to fulfil the commitment given in this policy.

This Environmental Policy will be made available to all staff and other interested parties.

Signed August 2007



Cllr M Alexander – Leader of the Council
Executive

Signed August 2007



Mr J Maitland Evans – Chief

