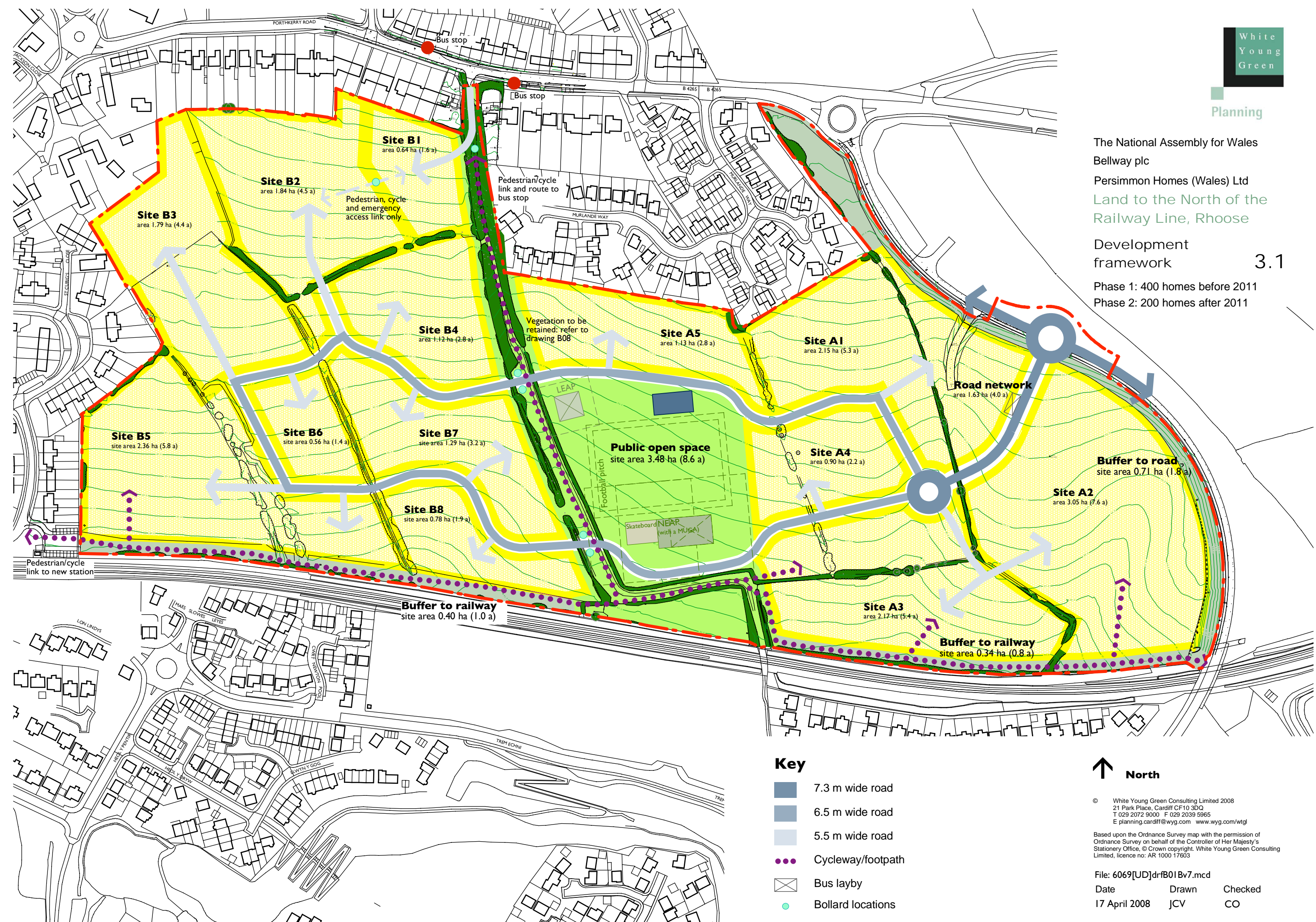


The National Assembly for Wales
Bellway plc
Persimmon Homes (Wales) Ltd
Land to the North of the
Railway Line, Rhoose

Development
framework **3.1**

Phase 1: 400 homes before 2011
Phase 2: 200 homes after 2011



Key

- 7.3 m wide road
- 6.5 m wide road
- 5.5 m wide road
- Cycleway/footpath
- Bus layby
- Bollard locations



© White Young Green Consulting Limited 2008
21 Park Place, Cardiff CF10 3DQ
T 029 2072 9000 F 029 2039 5965
E planning.cardiff@wyg.com www.wyg.com/wtgi

Based upon the Ordnance Survey map with the permission of
Ordnance Survey on behalf of the Controller of Her Majesty's
Stationery Office, © Crown copyright. White Young Green Consulting
Limited, licence no: AR 1000 17603

File: 6069[UD]drfB01Bv7.mcd
Date 17 April 2008 Drawn JCV Checked CO