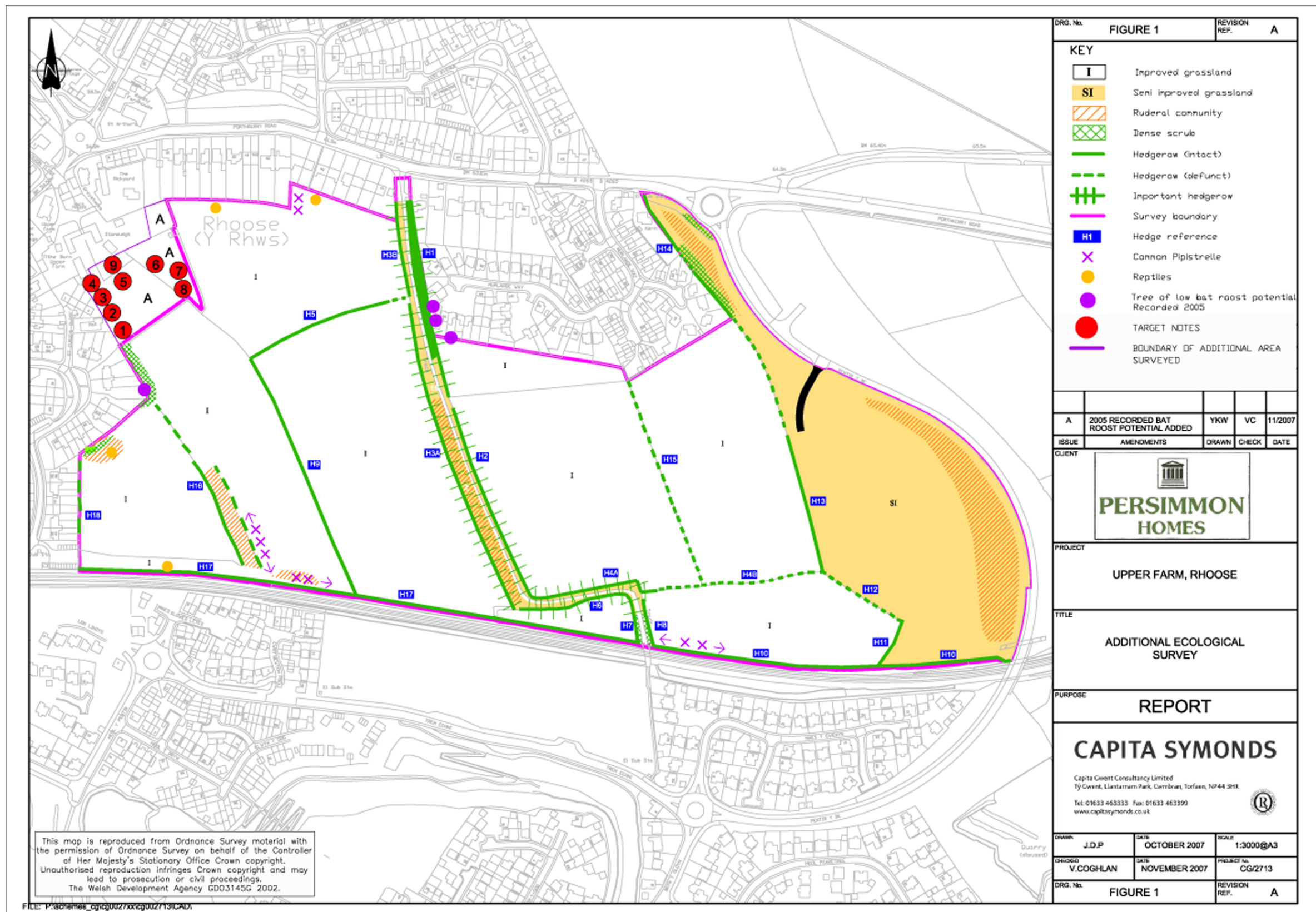


The National Assembly for Wales  
Bellway plc  
Persimmon Homes (Wales) Ltd

**Land to the North of the  
Railway Line, Rhoose**  
**Ecological Survey 8.1**



Scale: plan not to scale  
© White Young Green Consulting Limited 2005  
21 Park Place, Cardiff CF10 3DQ  
T 029 2072 9000 F 029 2039 5965  
E planning.cardiff@wyg.com www.wyg.com/wtg/

Based upon the Ordnance Survey map with the permission of Ordnance Survey on behalf of the Controller of Her Majesty's Stationary Office, © Crown copyright. White Young Green Consulting Limited, licence no: AR 1000 17603

Plan prepared by Capita Symonds  
File: 6069drfA01revisionA.mcd  
Date Drawn Checked  
April 08 JJ

The National Assembly for Wales  
Bellway plc  
Persimmon Homes (Wales) Ltd

**Land to the North of the  
Railway Line, Rhoose**  
**Additional Ecological Survey 8.1a**

**Target Notes**

1. Pile of composting grass cuttings providing ideal refugia/hibernacula for reptiles. Grass snakes particularly like this type of habitat for egg laying
2. Rubble pile providing ideal refugia for reptiles
3. Trees including ivy (*Hedera helix*) covered elder (*Sambucus nigra*) provide ideal habitat for breeding birds
4. Rubble pile providing ideal refugia for reptiles
5. Rubble pile providing ideal refugia for reptiles
6. Line of Leyland Cypress (*x Cupressocyparis leylandii*) trees
7. Hedgerow made up of elder, sycamore (*Acer pseudoplatanus*) and rose (*Rosa sp.*) with bramble (*Rubus fruticosus*) and ivy growing through
8. Pile of chippings providing ideal refugia/hibernacula for reptiles
9. Garden belonging to the dwelling Stoneleigh

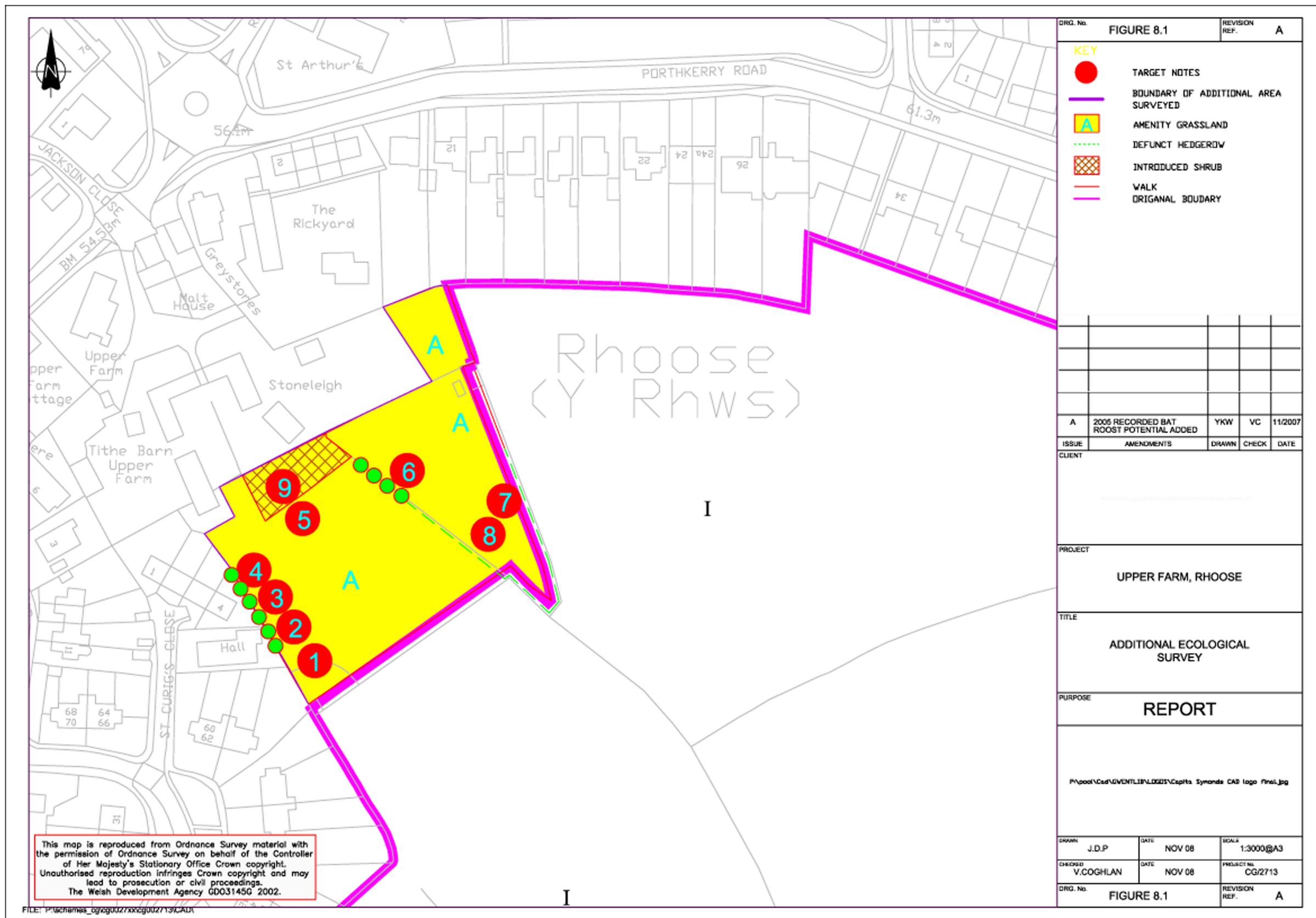


Scale: plan not to scale

© White Young Green Consulting Limited 2005  
21 Park Place, Cardiff CF10 3DO  
T 029 2072 9000 F 029 20395 965  
E planning.cardiff@wyg.com www.wyg.com/wgl

Based upon the Ordnance Survey map with the permission of Ordnance Survey on behalf of the Controller of Her Majesty's Stationary Office, © Crown copyright. White Young Green Consulting Limited, licence no: AR 1000 17603

Plan prepared by Capita Symonds  
File: 6069drgA02.mcd  
Date Drawn Checked  
April 08 JJ



This map is reproduced from Ordnance Survey material with the permission of Ordnance Survey on behalf of the Controller of Her Majesty's Stationary Office Crown copyright. Unauthorised reproduction infringes Crown copyright and may lead to prosecution or civil proceedings. The Welsh Development Agency GDO3145G 2002.

FILE: P:\schemas\_g\cg0027\xxxg002713\CAD\