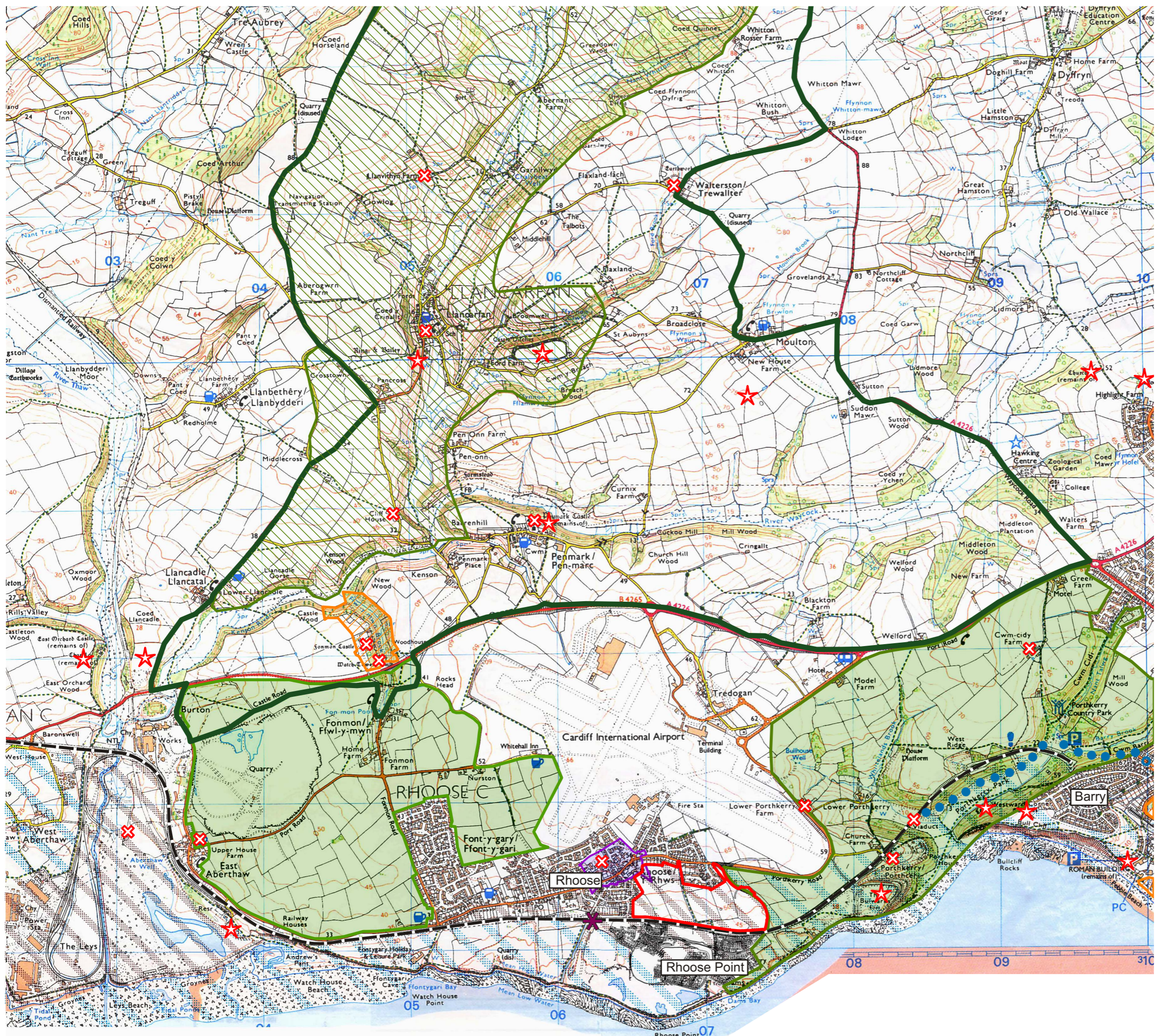


The National Assembly for Wales
Bellway plc
Persimmon Homes (Wales) Ltd.

Land to the North of the
Railway Line, Rhoose

Landscape Context **9.1**



- Key**
- Site of proposed development
 - Settlements
 - Woodland
 - Railway line
 - Rhoose railway station
 - Cycle Route: National Route 68
 - Cycle Route: Proposed National Route 88
 - Public footpath
 - Bridleway
 - Registered Historic Landscape
 - Registered Historic Park/Garden
 - Scheduled Ancient Monument
 - Listed building
 - Conservation Area
 - Developed Coast
 - Undeveloped Coast
 - Green Wedge
 - Special Landscape Area

