



Community Profile

Directorate of Environmental and Economic Regeneration

September 2006

The Vale of Glamorgan
Community Profile
2006

- 1 Introduction
- 2 Census Data
- 3 Benefits Data
- 4 Deprivation Data
- 5 The Broad Community Picture

Table 1 2001 Census Highest Score Super Output Area

Table 2 Benefits Data Highest Score Super Output Areas

Table 3 Deprivation data Highest Score Super Output Areas

Appendix 1 – Location Maps

Super Output Areas for The Vale of Glamorgan

Super Output Areas for Llantwit Major

Super Output Areas for Barry

Super Output Areas for Penarth

Appendix 2 - 2001 Census Maps

Household Size

Rooms per Household

People in Good Health

People in Poor Health

Married Couple Households

One Person Households

One Pensioner Households

No Employed Adults with Dependent Children Households

Households Owned Outright

Households Owned with a Mortgage

Households with a Member with a Limiting Long Term Illness

People Divorced

People Widowed

People Married

People Single (never married)

People aged 0 to 19

People aged 20 to 29

People aged 30 to 44

People aged 45 to 59

People aged 60 plus

People aged 90 plus

People providing unpaid care

Communal Establishment Residents

Medical Care Establishment Residents

Appendix 3 – Department of Work and Pensions Benefits Data

- Benefit Claimants - Working Age claimants
- Benefit Claimants - Incapacity Benefit
- Benefit Claimants – Severe Disablement
- Benefit Claimants – Income Support
- Benefit Claimants – Job Seekers Allowance
- Benefit Claimants – Disability Living Allowance
- Benefit Claimants – Pension Credits
- Benefit Claimants – State Pension
- Benefit Claimants – Lone Parents
- Benefit Claimants – Carers
- Benefit Claimants – Disabled

Appendix 4 – The Welsh Index of Deprivation

- Income Deprivation
- Employment Deprivation
- Health Deprivation
- Education Deprivation
- Housing Deprivation
- Physical Environment Deprivation
- Access to Services Deprivation

Appendix 5 - Deprivation Measures Definitions

The Vale of Glamorgan Community Profile 2006

1 Introduction

This report summarises the data available in 2006 to produce an area based social community profile of the Vale of Glamorgan. The information is presented in a series of themed maps and tables which show for numerous measures, the 78 Super Output Areas (SOA) (shown in Appendix 1) in the Vale of Glamorgan. This is a finer detail than has been presented to date because data for the Vale of Glamorgan was previously represented by 23 electoral wards. The advantage of this is that the focus of any concern can be made towards more homogeneous areas. The maps generally show by colour intensity the areas with the highest and lowest values for each of the measures. The approach to dealing with the numerous statistics is to put them under the broad headings of well-being, affluence and potential social difficulty. Together these measures form a consistent picture of the social and community structure in the Vale of Glamorgan. The commentary does not discuss each map in detail although most maps are mentioned in the general discussion.

2 2001 Census Data

The 2001 Census provides a wide range of statistics, a selection of which are presented here, which provide a picture of the social / community statistic's position for each Super Output Area relative to the rest of the Vale. The relative position of each measure compared with the Welsh average is also shown in the tables in Appendices 2,3 and 4

The 2001 Census measures of community well-being show for people in good or poor health that SOA Cowbridge 4 enjoys the best health with generally the northern Vale showing the highest proportions in **good health** while Buttrills 2 has the largest proportion who are **not in good health** and there are clusters of SOAs with high proportions not in good health in Barry and in Penarth. SOA Court 3 has the largest proportion of people providing unpaid care with SOAs with large proportions providing unpaid care mainly in the southern belt of the Vale. SOA Buttrills 2 has the largest proportion in communal establishments.

The measures of affluence show for **rooms per household** that SOA Cowbridge 4 has the highest average and it is situated in a large area of the northern Vale which has the highest proportions with the most rooms per household while pockets of SOAs in Barry for instance SOA Cadoc1 have the lowest. For **houses owned outright** SOA Wenvoe 2 has the highest proportion including most of the rural Vale and Penarth while SOA Cadoc 1 and Cadoc 2 have the lowest. This picture is complemented by the data on the proportions with **mortgaged houses**.

The 2001 Census provides numerous measures of potential social difficulty, which in itself does not necessarily mean that there are social difficulties, but it does mean that people are already living in conditions which are more likely to lead to social difficulties. These include older age groups where the largest proportions **over 90 years** are clustered around Cowbridge although SOA Plymouth 3 has the highest proportion. Similarly clusters of high proportions of **over 60 year olds** occur around Cowbridge, and Penarth with the highest proportion in SOA Plymouth 2. Households with **dependent children** and particularly households with in addition **no employed adults** are clustered in Barry with the highest proportion in SOA Gibbonsdown 3 and Gibbonsdown 1. The measures of household composition such as **single, married, widowed, divorced, one person and one-pensioner households** each give a complementary picture. The broad picture is that larger settlements have the higher proportions of single, person households and there are higher proportions of married people in the rural areas. Single pensioner households are highest in SOA Cowbridge 1 and SOA St Augustines 1.

Table 1 2001 Census Highest score Super Output Area

Super Output Area	2001 Census Statistic
Buttrills 2	Highest Not good health
Court 3	Highest Unpaid carers
Buttrills 2	Communal establishments
Cadoc 1	Lowest rooms per household
Cadoc 1	Lowest houses owned
Cadoc 2	Lowest houses owned
Plymouth 3	Highest over 90 years old
Plymouth 2	Highest over 60 years old
Gibbonsdown 1	Highest dependent children
Gibbonsdown 3	Highest dependent children and no adults in household employed
St Augustines 1	Highest single pensioners

3 Benefits Data

Benefits data is available for 2006 for Super Output Areas and is shown on themed maps indicating the range of measures for each Super Output Area relative to the rest of the Vale. Obviously anyone receiving benefits (possibly excepting state pension) cannot be considered to be affluent, so all would come under this category. Some related to disability are also directly connected with wellbeing.

Measures of community well-being show for **incapacity benefit** that SOA Castleland 1 has the highest proportion of people receiving this benefit with a large cluster of Barry and North Penarth at the higher levels. A similar picture emerges from those with **severe disablement** also with relatively large proportions at SOA St Athan 1 and SOA St Brides1. In the case of the

disabled claiming benefits there is also a relatively high proportion of people receiving benefits in the coastal SOAs between Llantwit Major and Rhoose. This picture is complemented by the data for the people who are **carers**. High proportions of carers occur in Barry and Penarth but also in St Brides. The highest proportion occurs in SOA Cadoc 4. The most striking conclusion from these benefits well-being statistics is that SOA Castleland 1 has the highest proportions in five of the measures.

There are no measures of positive affluence from the benefits data although obviously for instance the area with the lowest proportion of **income support** can be considered to be relatively affluent. This occurs at SOA Cowbridge 1 and in SOA Wenvoe 1. Conversely the areas of highest proportions of population receiving income support are virtually all in Barry and again Castleland has the highest proportion.

The area measures for potential social difficulty include people receiving **job seekers allowance** where there is a cluster in Barry and a cluster in Rhoose, the highest proportion being in SOA Cadoc 4. Similarly for pension credits there are two clusters – at Barry and at Penarth with the highest proportion in SOA Buttrills 2. Other potential social difficulty measures include **lone parents** receiving benefits. This clusters in Barry with the highest proportion in SOA Gibbonsdown 2. The case of the number of people on **state pensions** is simply an indicator of the location of older people where the largest proportion of pensioners live around Cowbridge and around Penarth. The highest proportion is in SOA Cowbridge 1.

Table 2 Benefits Data Highest Score Super Output Areas

Super Output Area	Benefit Type
Castleland 1	Incapacity Benefit
St Brides 1	Severe disablement
St Athan 1	Severe disablement
Cadoc 4	Carers
Cadoc4	Job seekers allowance
Buttrills 2	Pension credits
Gibbonsdown 2	Lone parents
Cowbridge 1	State pensions

4 Deprivation Data

The deprivation data comes from the 2005 Welsh Index of Multiple Deprivation, which besides an overall index and ranking, shows indices and rankings for seven deprivation domains. The rankings are the position of the Super Output Area in the all Wales list of 1896 Super Output Areas.

There is one deprivation score which could be considered as a well being measure. The **health** deprivation measure shows clusters of high deprivation in Penarth and Barry with the highest relative proportion in SOA Court 3.

The affluence measures from the index of deprivation include **income** deprivation and **employment** deprivation. Both of these measures show the cluster for the highest proportions for this group in Barry with a few more located in Penarth. The most deprived SOA for income is Gibbonsdown 2 and the most deprived for employment is Castleland 1

The potential social difficulty measures for deprivation **include local environment, access to services** and **education** deprivation. The access to services measure shows high proportions of the population in rural areas have poor access to services with St Brides major 1 having the highest proportion, whereas the physical environment measure shows more of a focus on the urban areas with SOA Cadoc 5 having the highest proportion. Education deprivation is most prevalent in northern Barry with SOA Gibbonsdown 2 having the highest proportion.

Table 3 Deprivation data Highest score Super Output Areas

Super Output Area	Deprivation Type
Court 3	Health
Gibbonsdown 2	Income
Castleland 1	Employment
St Brides	Access to services
Cadoc 5	Environment
Gibbonsdown 2	Education

5 The Broad Community Picture

The Super Output Area communities with social difficulties are clustered in the urban parts Barry and Penarth. Within these clusters are small pockets where the worst relative deprivation and difficulties in coping with living occur.

The combination of data sources described above show that the Vale of Glamorgan comprises two different types of polarised community or social make up, which are located in clearly separate areas. The first social grouping is in the areas where significant proportions of the population are experiencing social difficulties, particularly in the areas of Castleland, Court, Gibbonsdown and some parts of Penarth. The second social grouping is in the areas where most of the population is relatively affluent, well enough to be able to live a comfortable lifestyle and situated in the less populated northern rural areas but particularly in the areas of Cowbridge and Wenvoe. There are of course “buffer” areas between these two limits where there are some of the characteristics of both of the groupings described. This is true along the coastal belt from Llantwit Major to Rhoose where there are pockets of social wellbeing problems such as health and in the outer areas of Barry and Penarth.

The areas where there is potential for social difficulty tend to be in the areas which are already showing high wellbeing difficulties, except for possibly Cowbridge where although an affluent area, there are also high proportions of older people who may be in need of support.

This report attempts to present a picture of the social structure of the communities in the Vale of Glamorgan. It shows as far as possible the relative disadvantage of some communities compared with others in the Council area. It does not attempt to list or relate any facilities or measures already in place or proposed, which will enable improvement in the well-being or affluence of people in those areas identified as disadvantaged.

Appendix 1 Maps

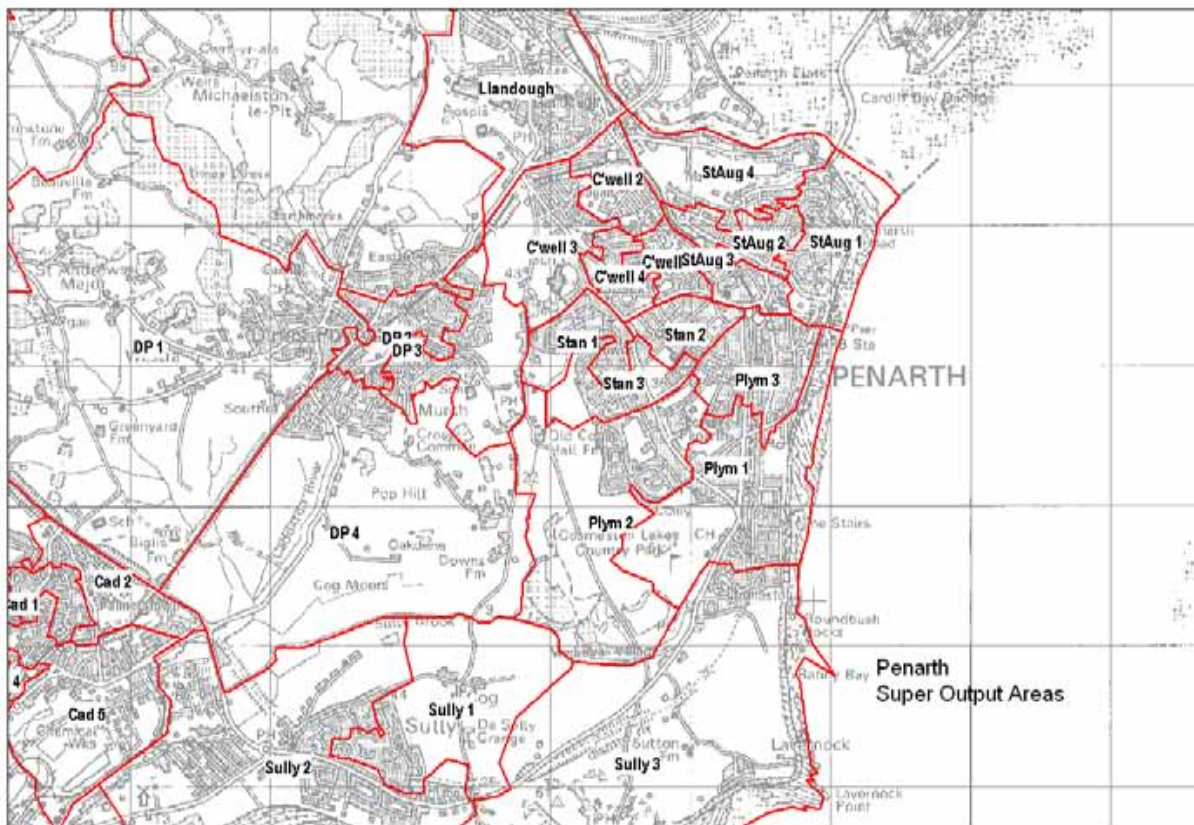
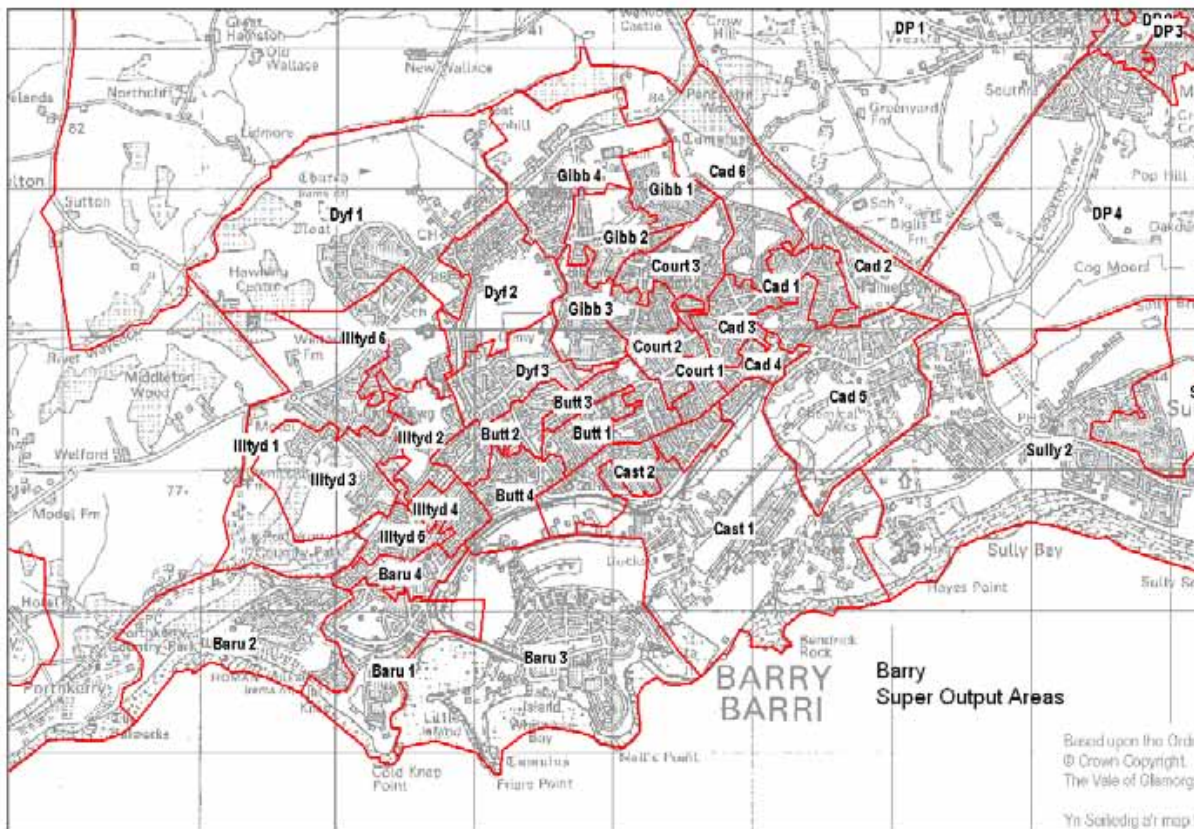
The Vale of Glamorgan Super Output Areas

Llantwit Major Super Output Areas

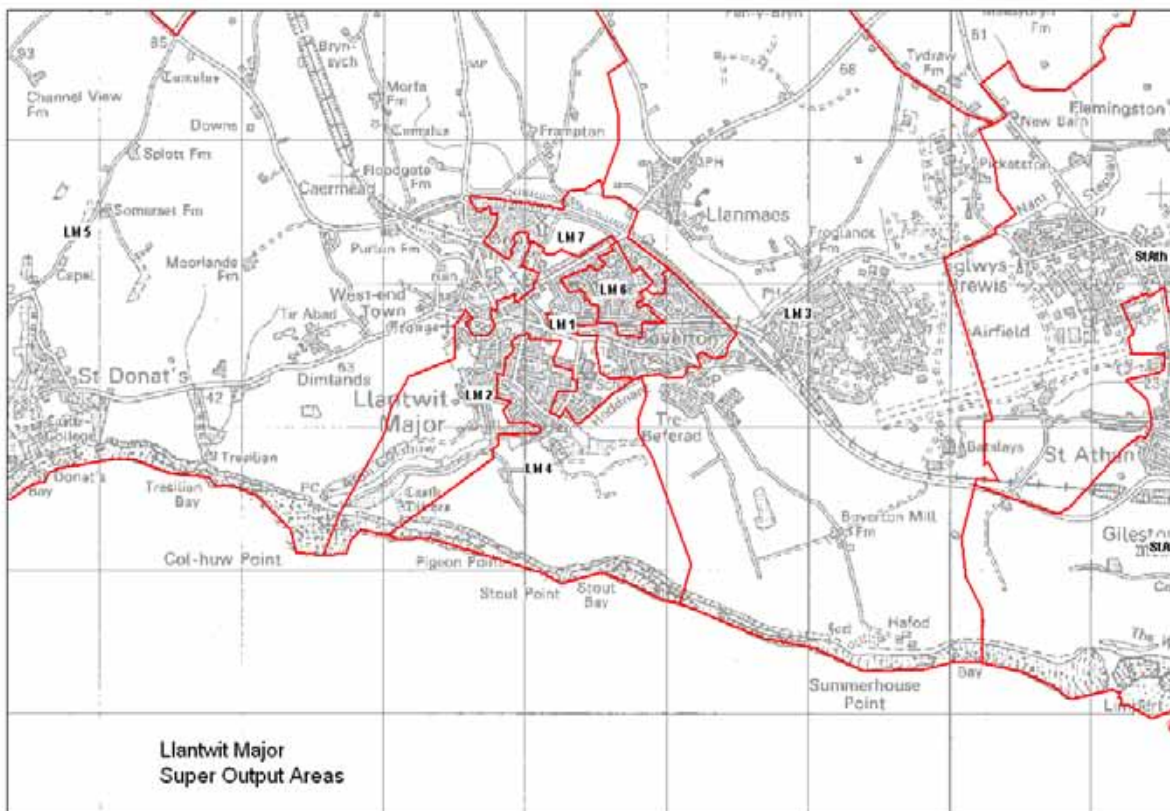
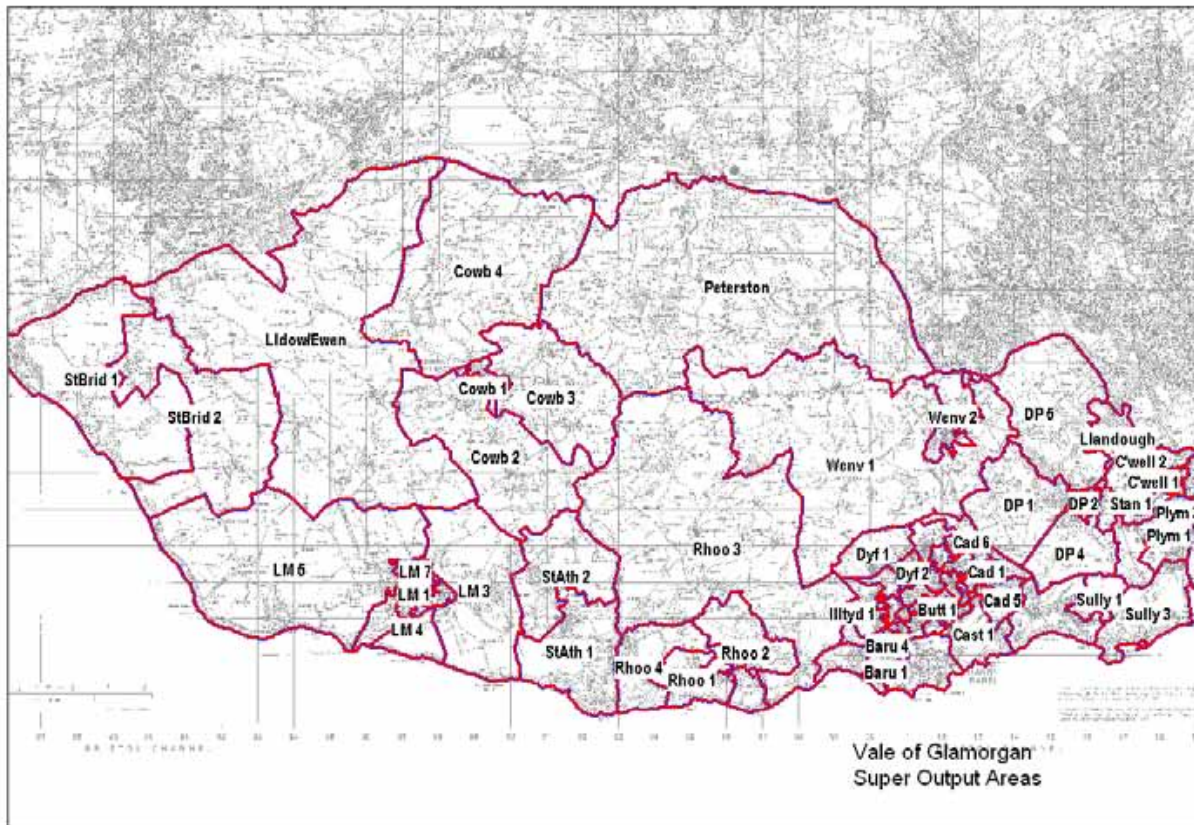
Barry Super Output Areas

Penarth Super Output Areas

Barry and Penarth Super Output Areas



Vale of Glamorgan and Llantwit Major Super Output Areas



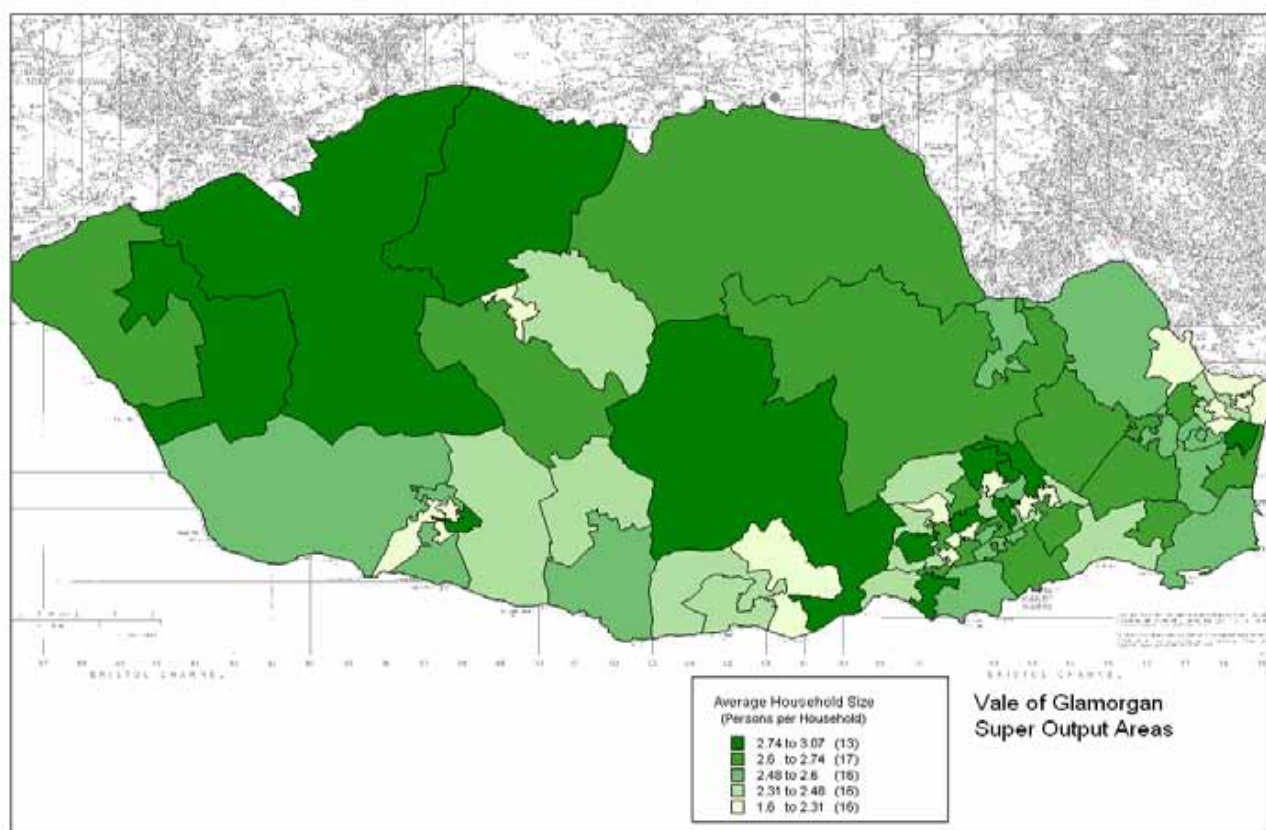
Appendix 2 2001 Census Data and Maps

Table 2001 Census data part 1

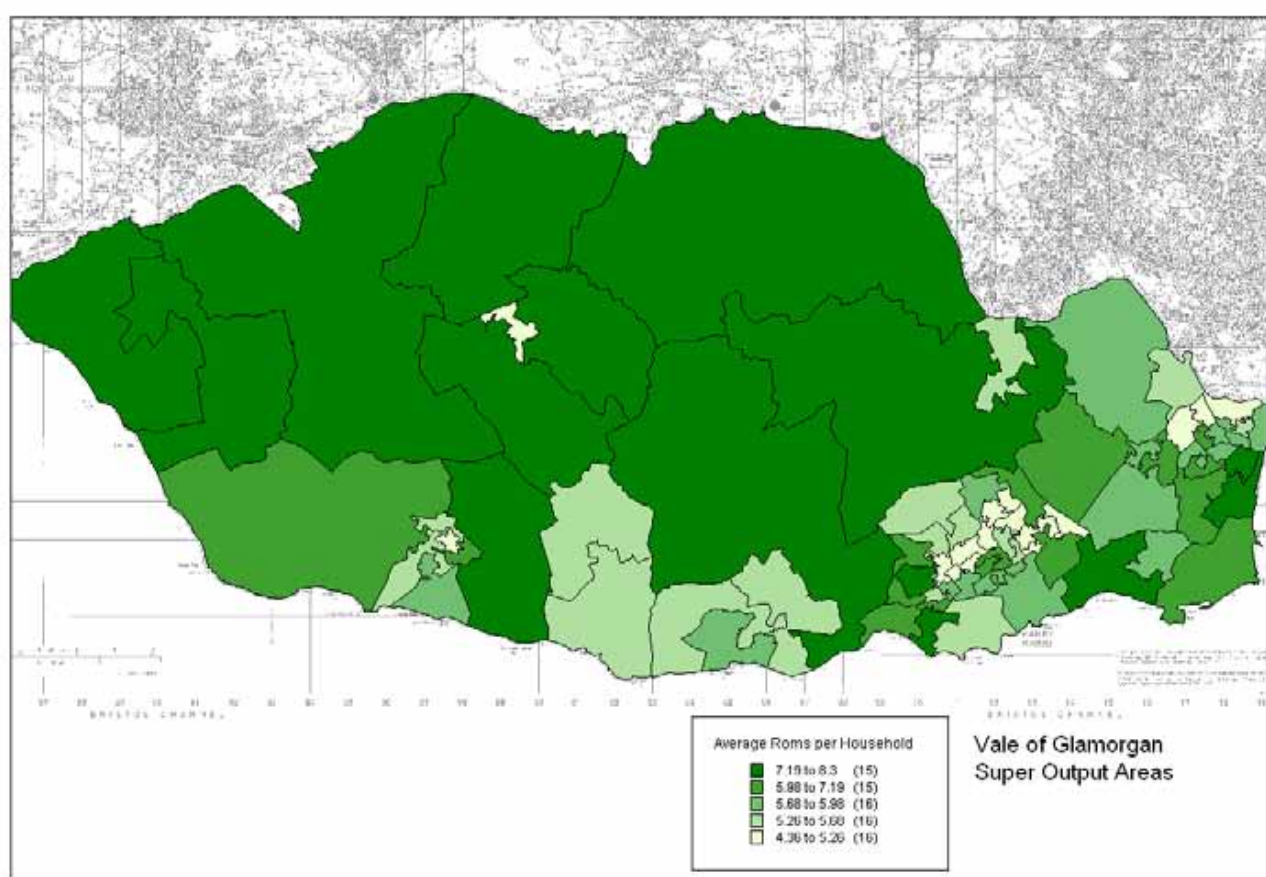
Table 2001 Census Data Part 2

Theme Map Household Size
Theme Map Rooms per Household
Theme Map People in Good Health
Theme Map People in Poor Health
Theme Map Married Couple Households
Theme Map One Person Households
Theme Map One Pensioner Households
Theme Map No Employed Adults with Dependent Children Households
Theme Map Households Owned Outright
Theme Map Households Owned with a Mortgage
Theme Map Households with a Member with a Limiting Long Term Illness
Theme Map People Divorced
Theme Map People Widowed
Theme Map People Married
Theme Map People Single (never married)
Theme Map People aged 0 to 19
Theme Map People aged 20 to 29
Theme Map People aged 30 to 44
Theme Map People aged 45 to 59
Theme Map People aged 60 plus
Theme Map People aged 90 plus
Theme Map People providing unpaid care
Theme Map Communal Establishment Residents
Theme Map Medical Care Establishment Residents

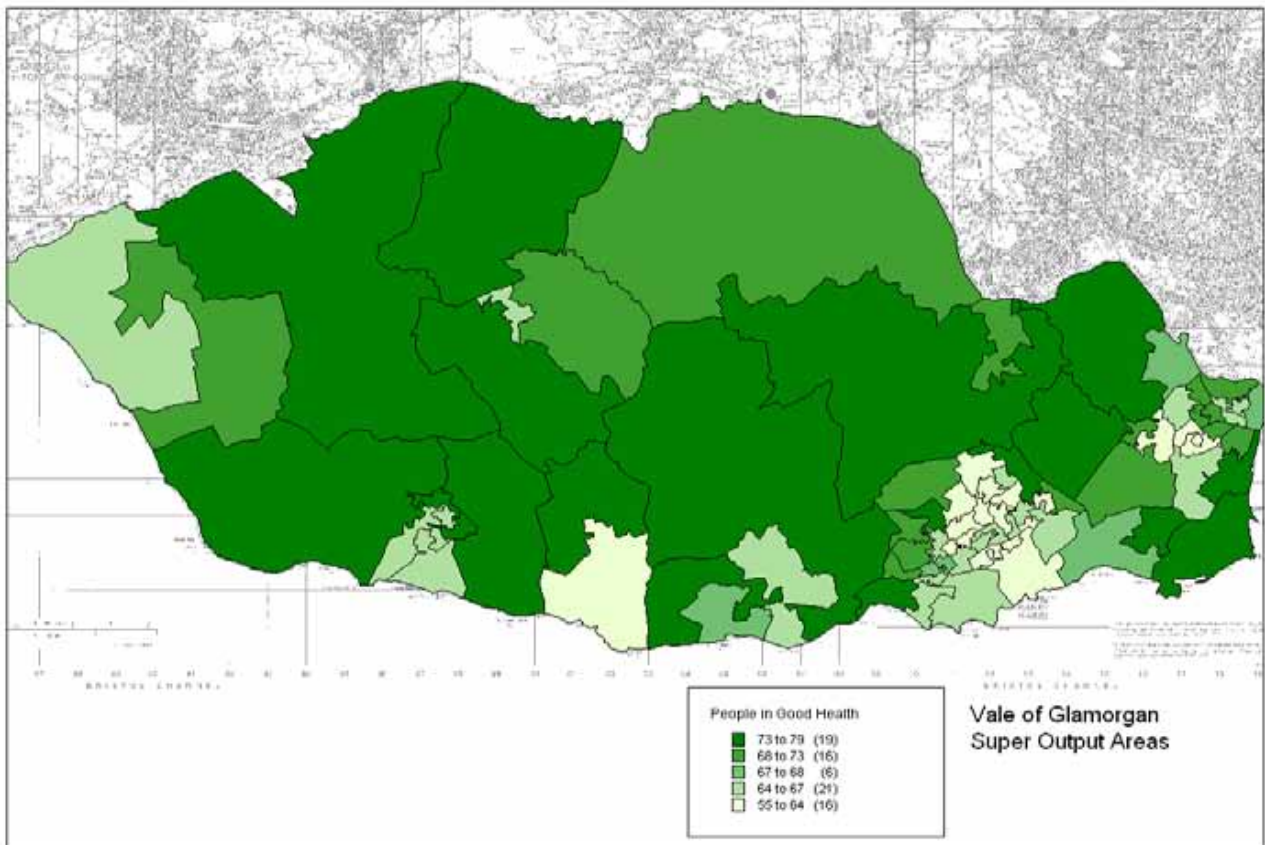
Average Household Size



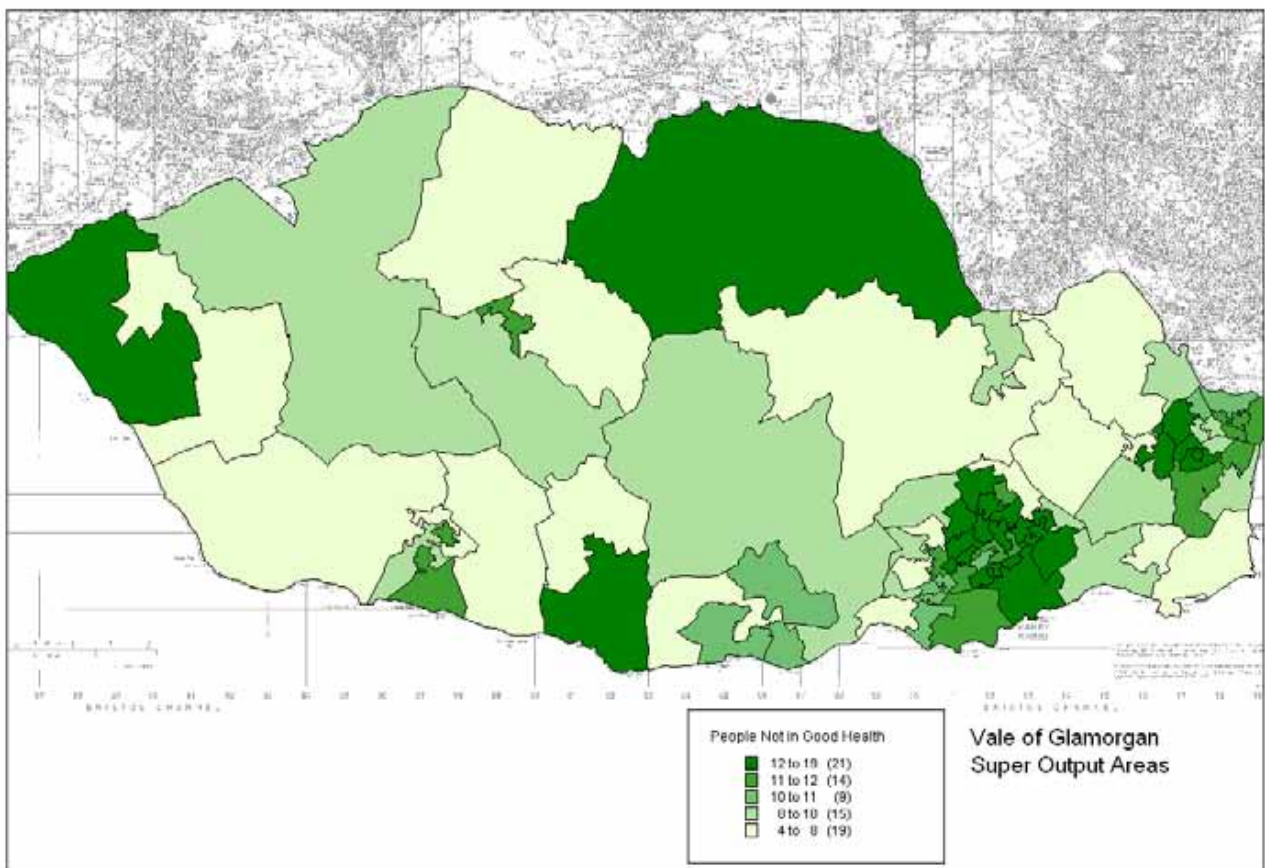
Average Rooms per Household



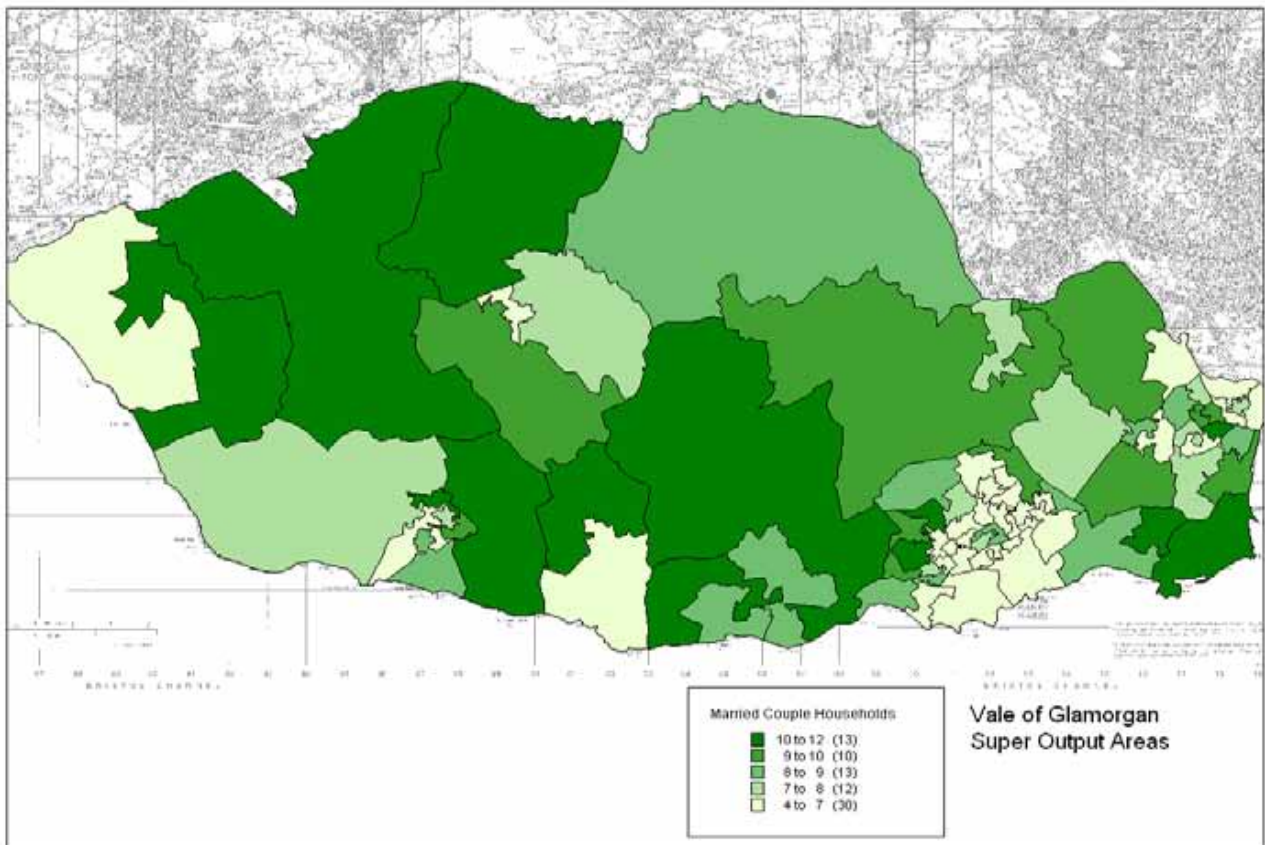
People in Good Health



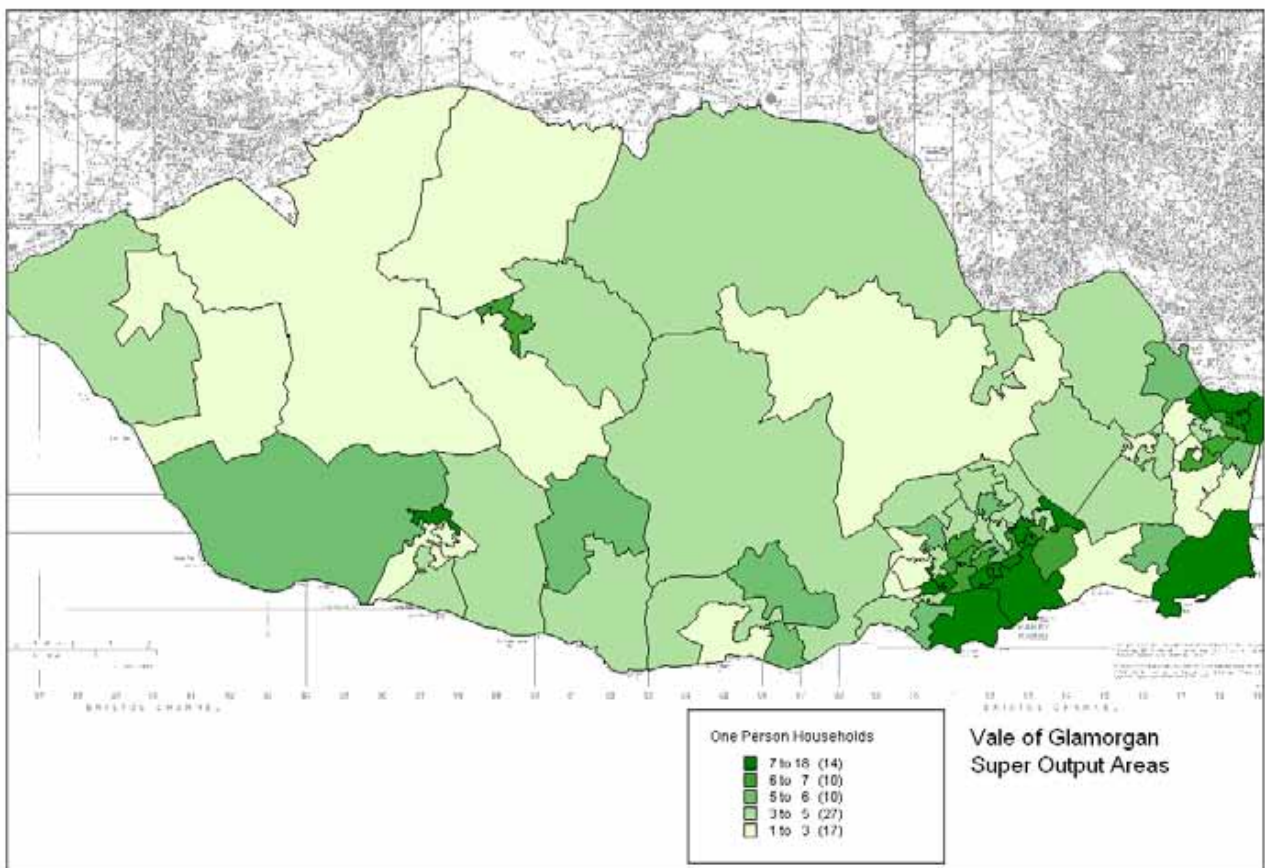
People Not in Good Health



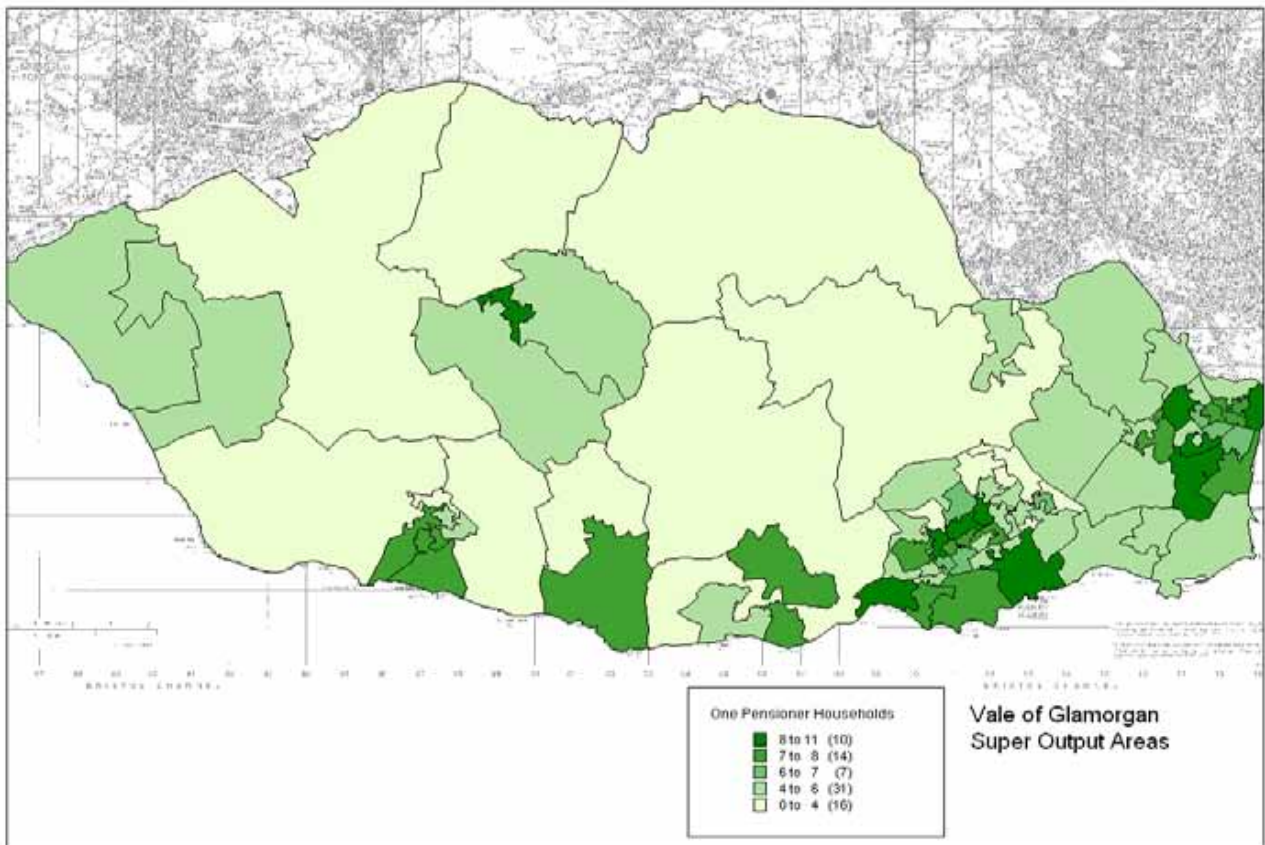
Married Couple Households



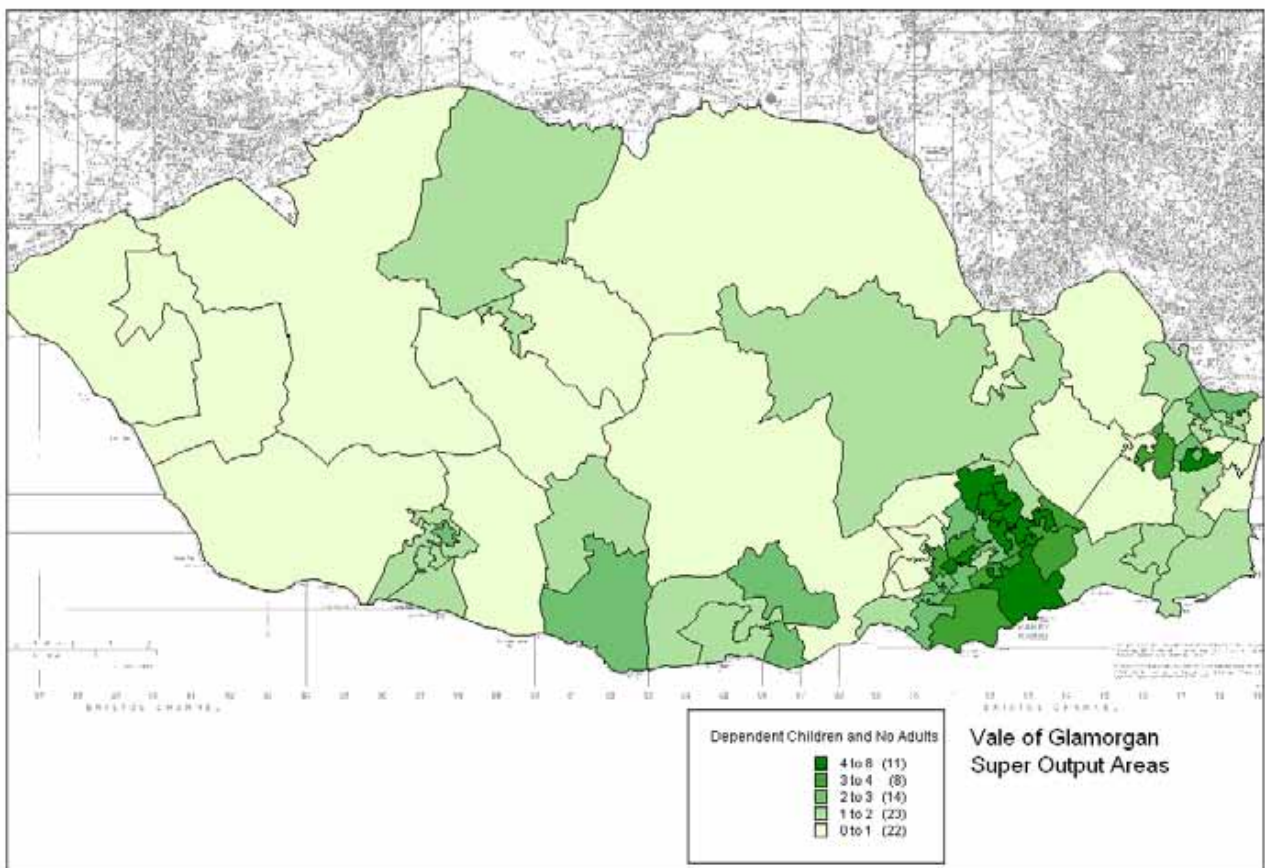
One Person Households



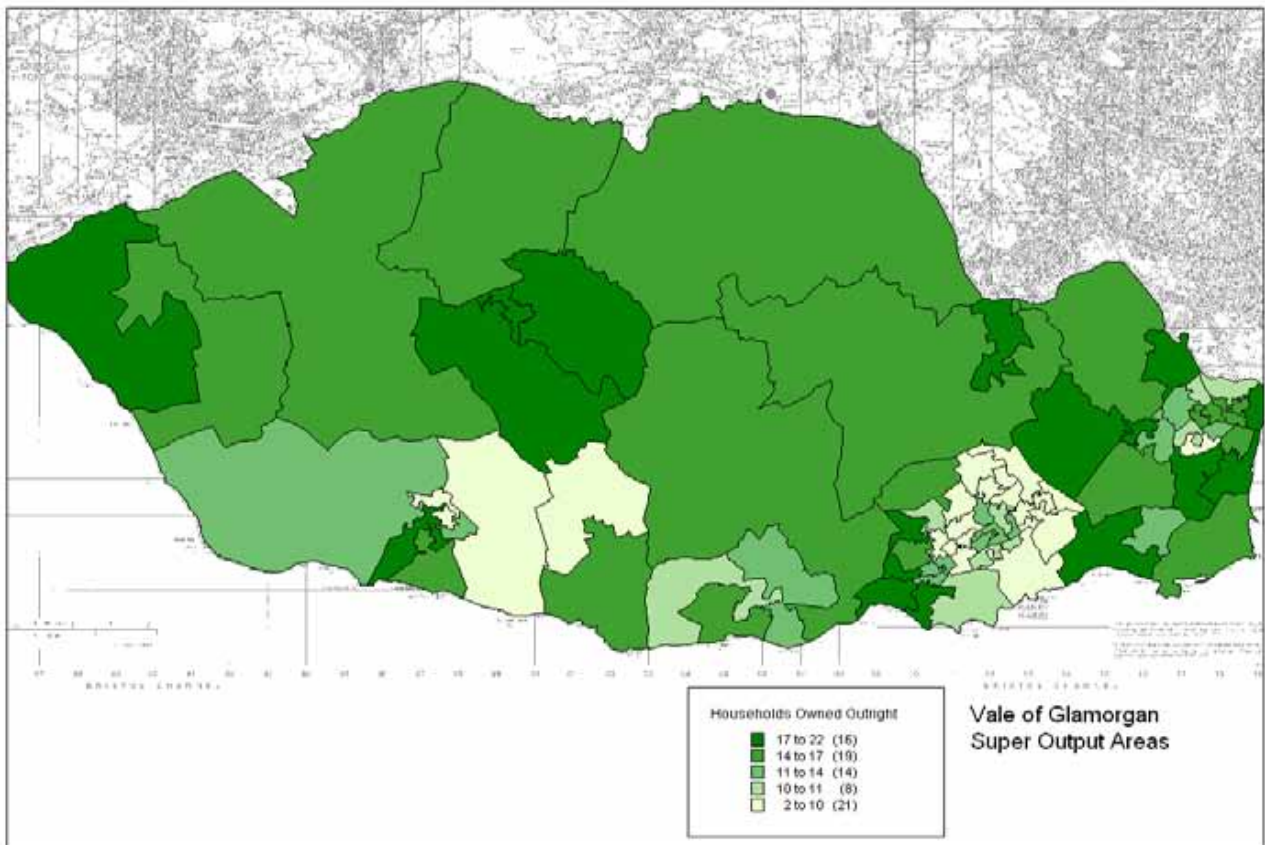
One Pensioner Households



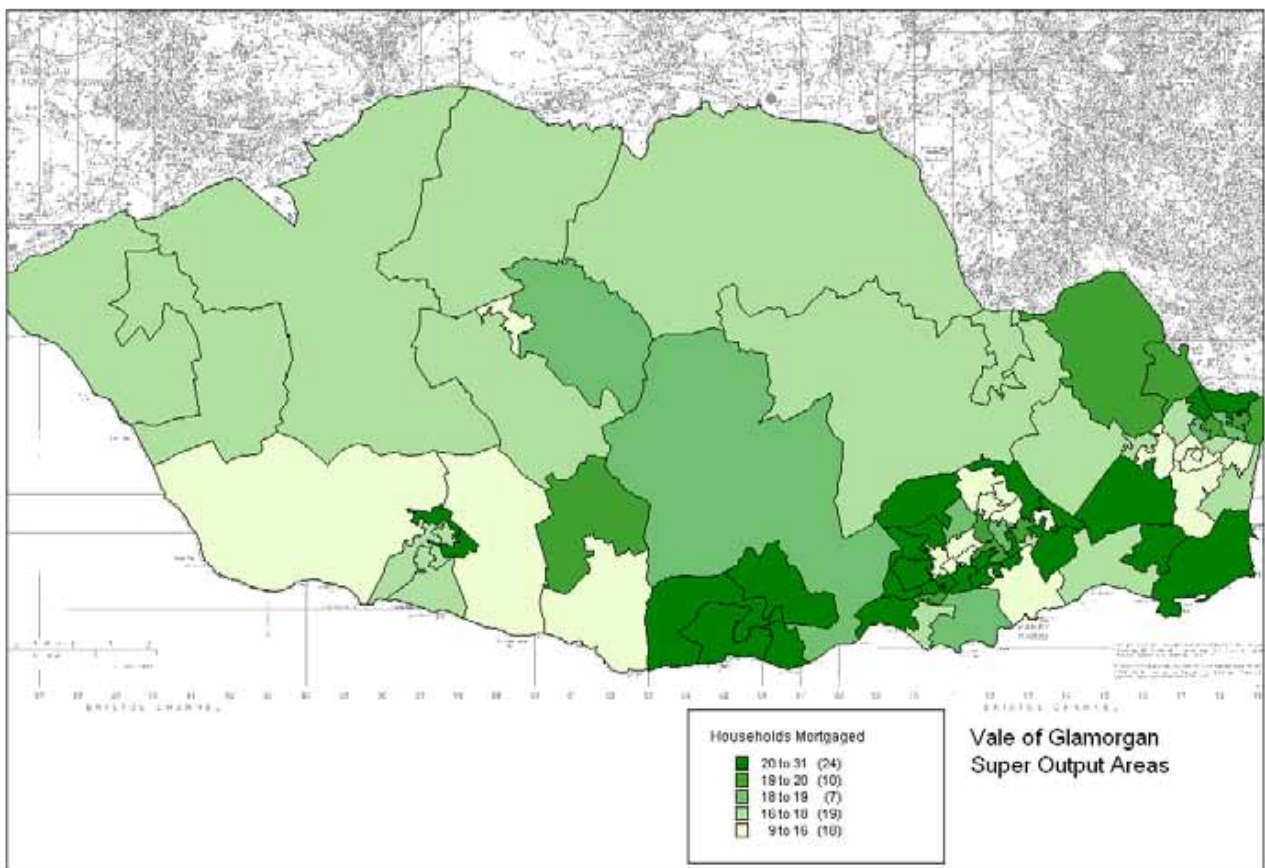
Households with Dependent Children and No Employed Adults



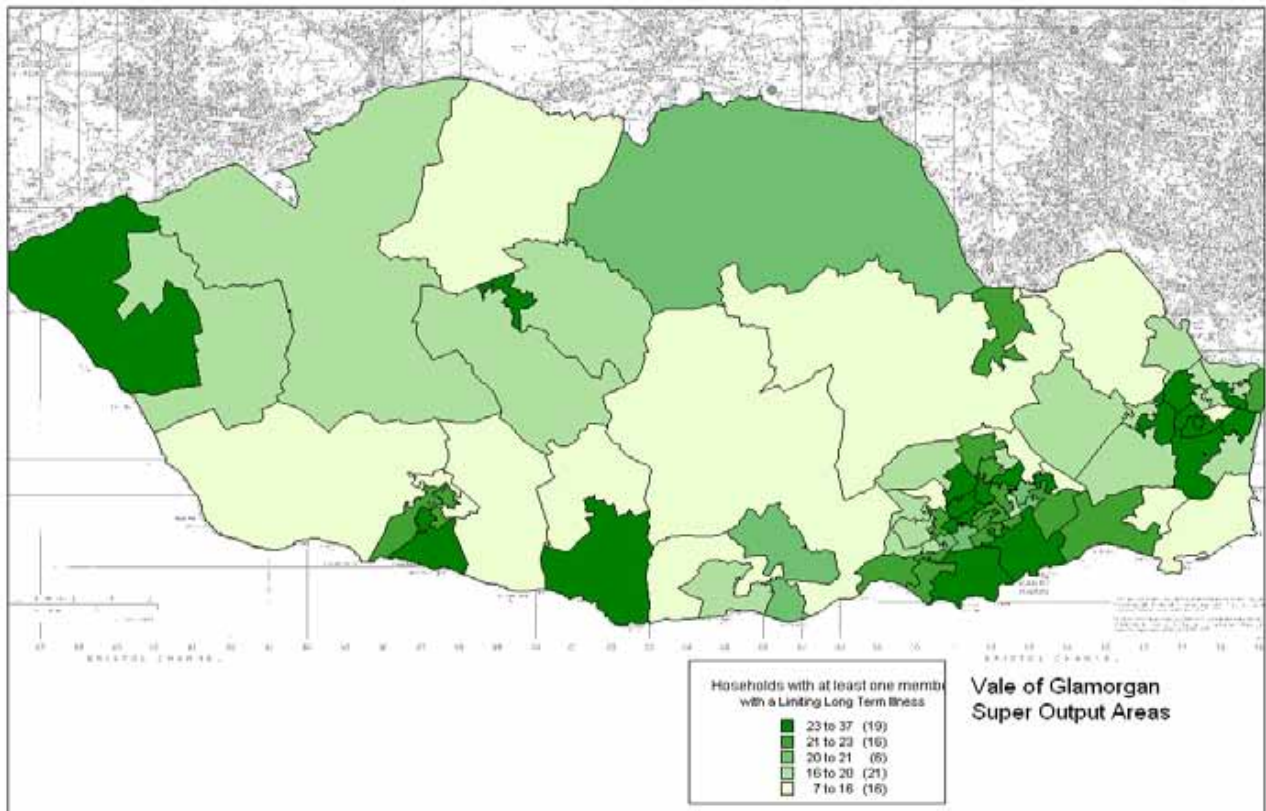
Houses Owned Outright



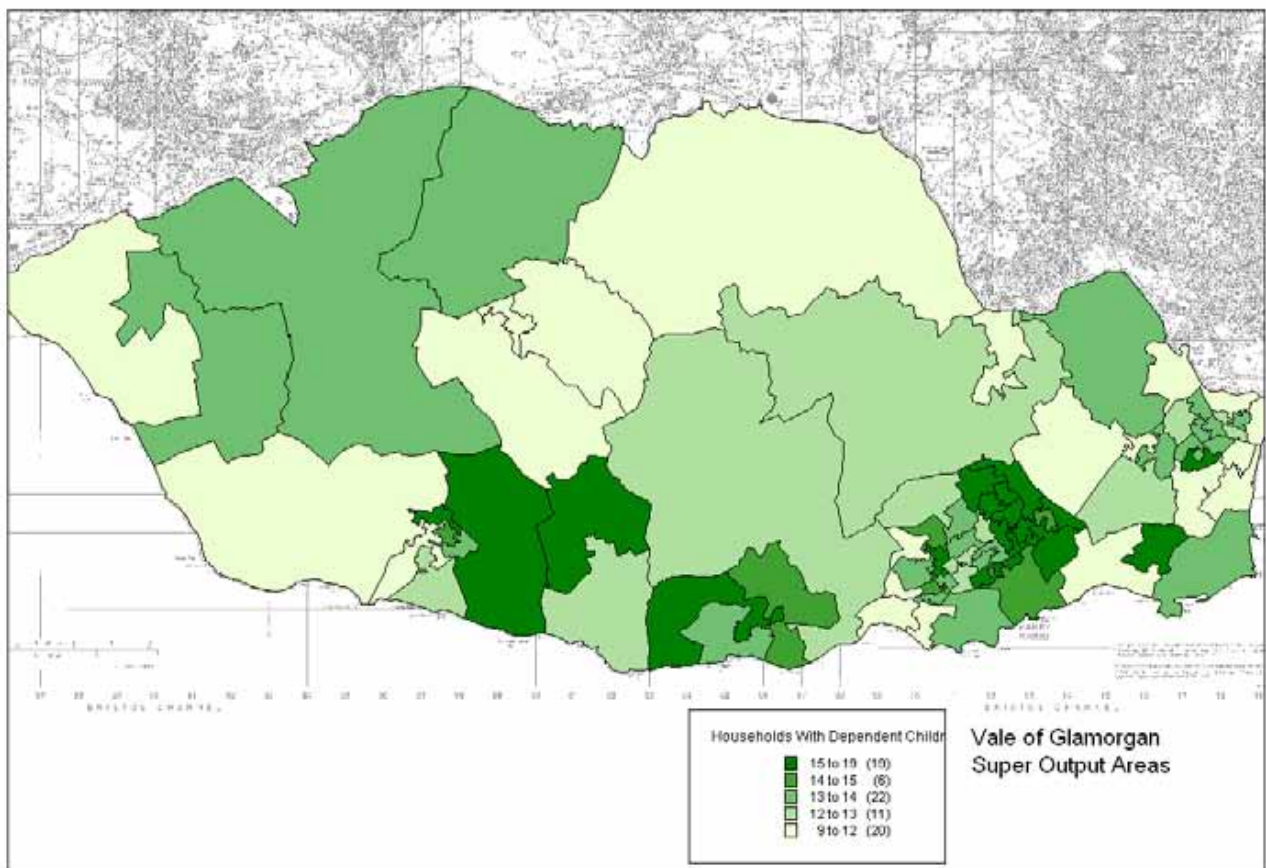
Mortgaged Houses



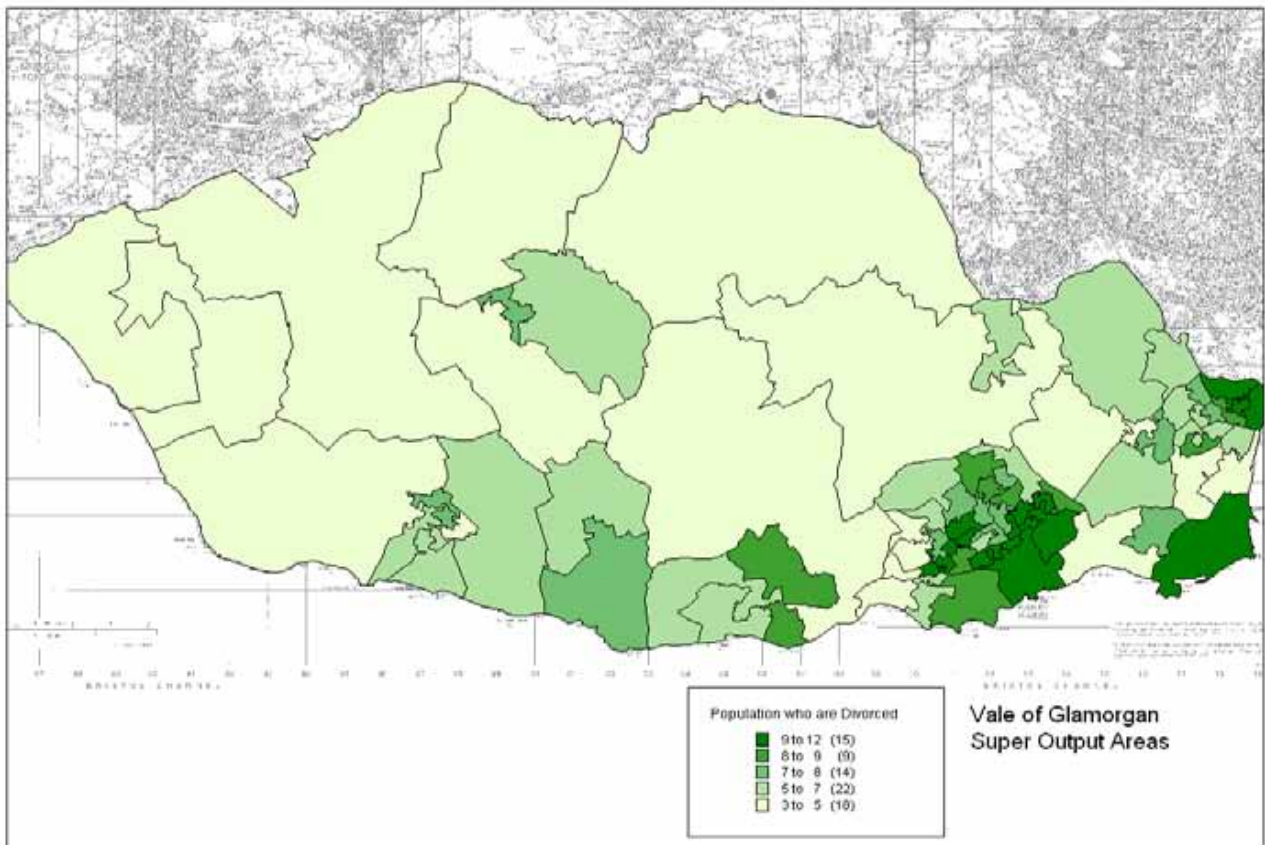
Households with at least one member with a long term limiting illness



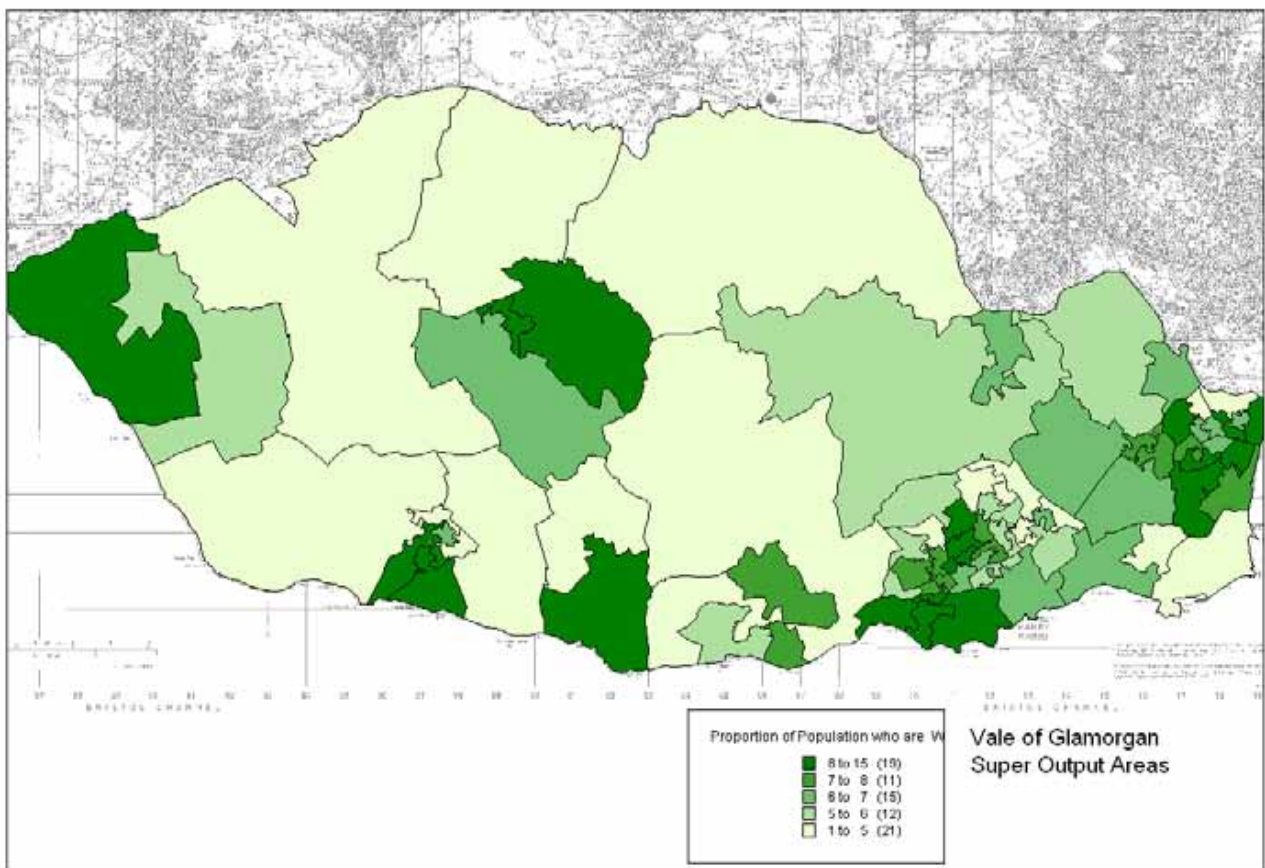
Households with Dependent Children



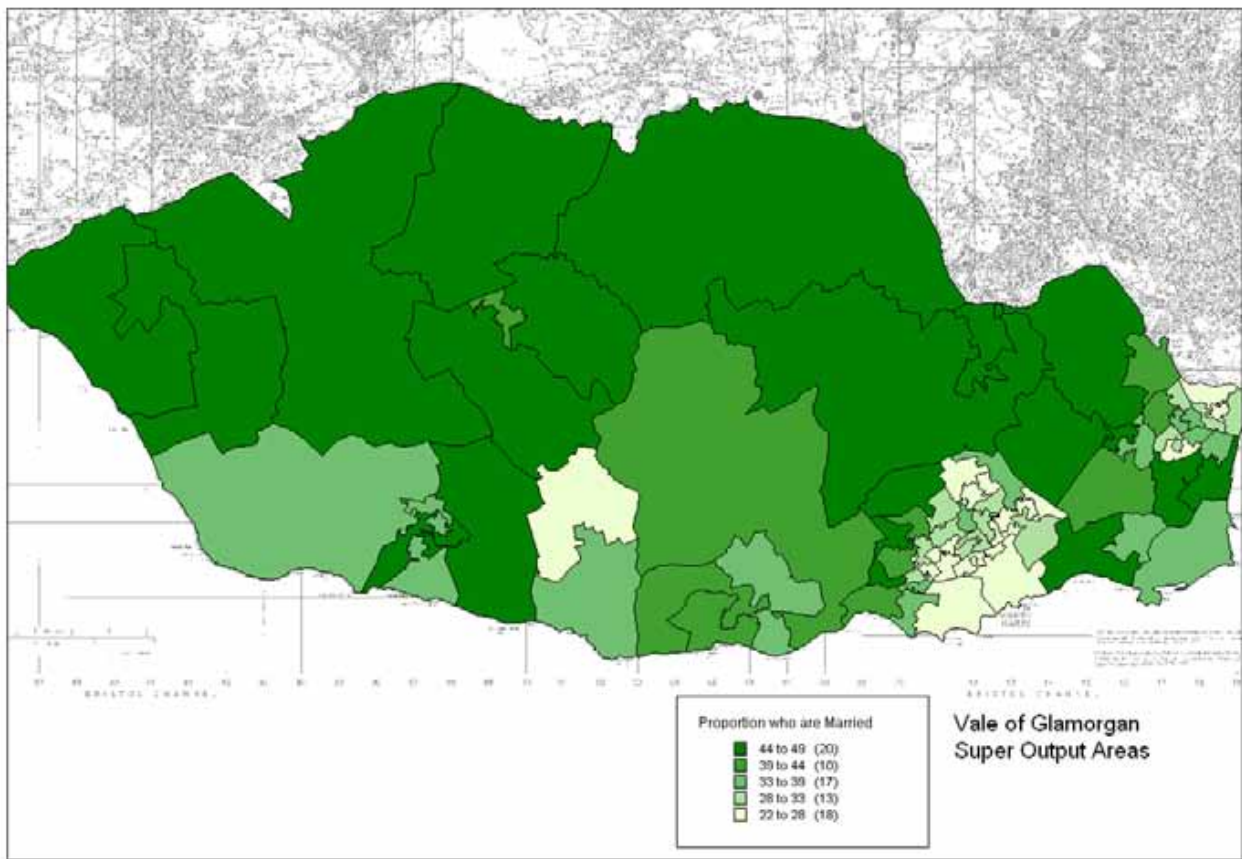
Proportion of Population who are Divorced



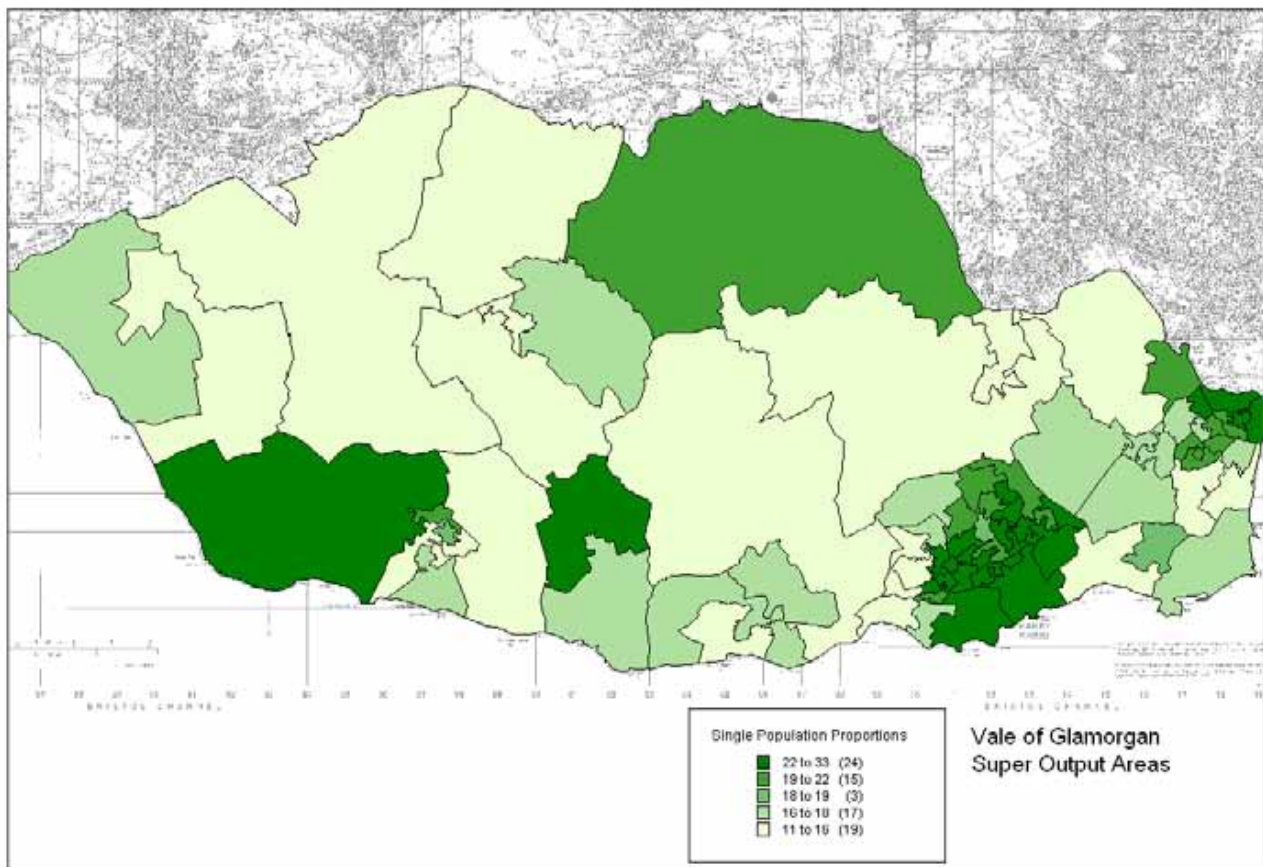
Proportion of Population who are Widowed



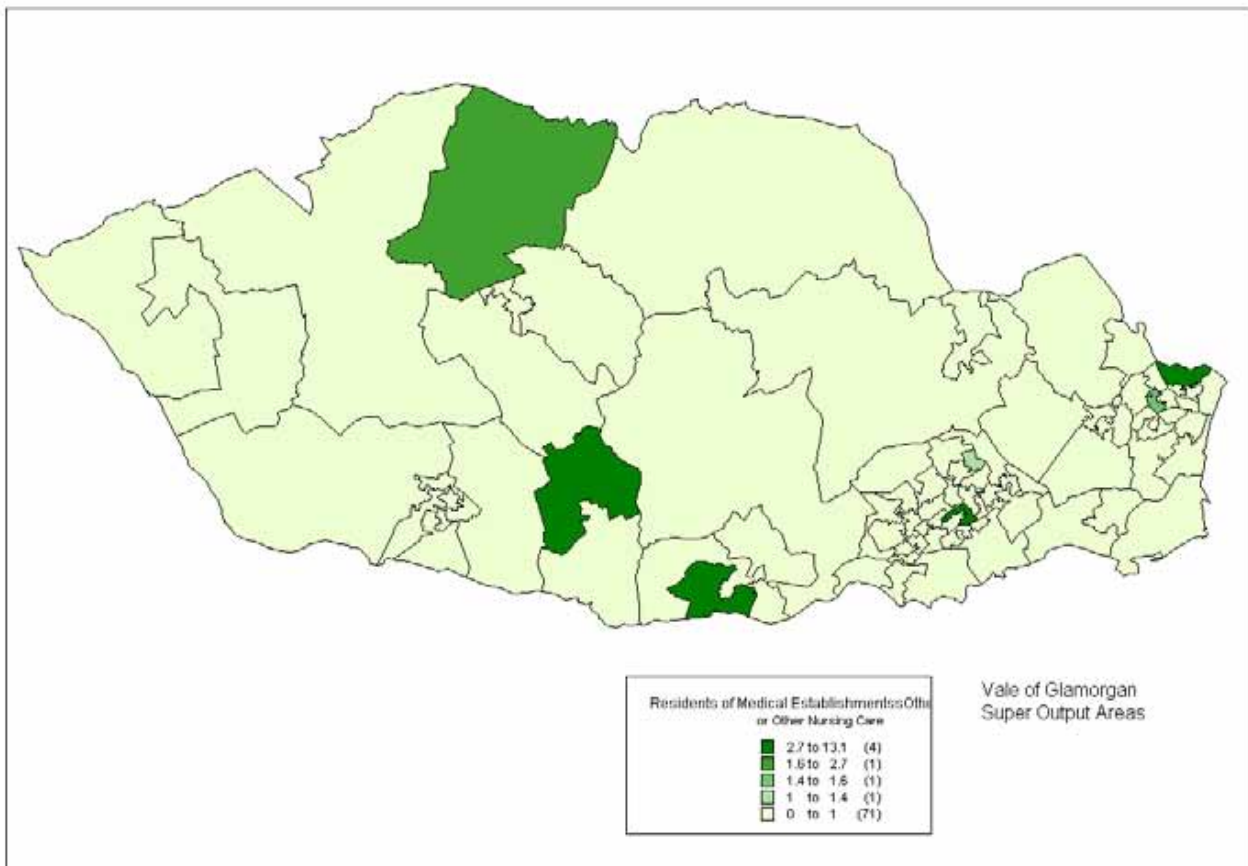
Proportion of Population who are Married



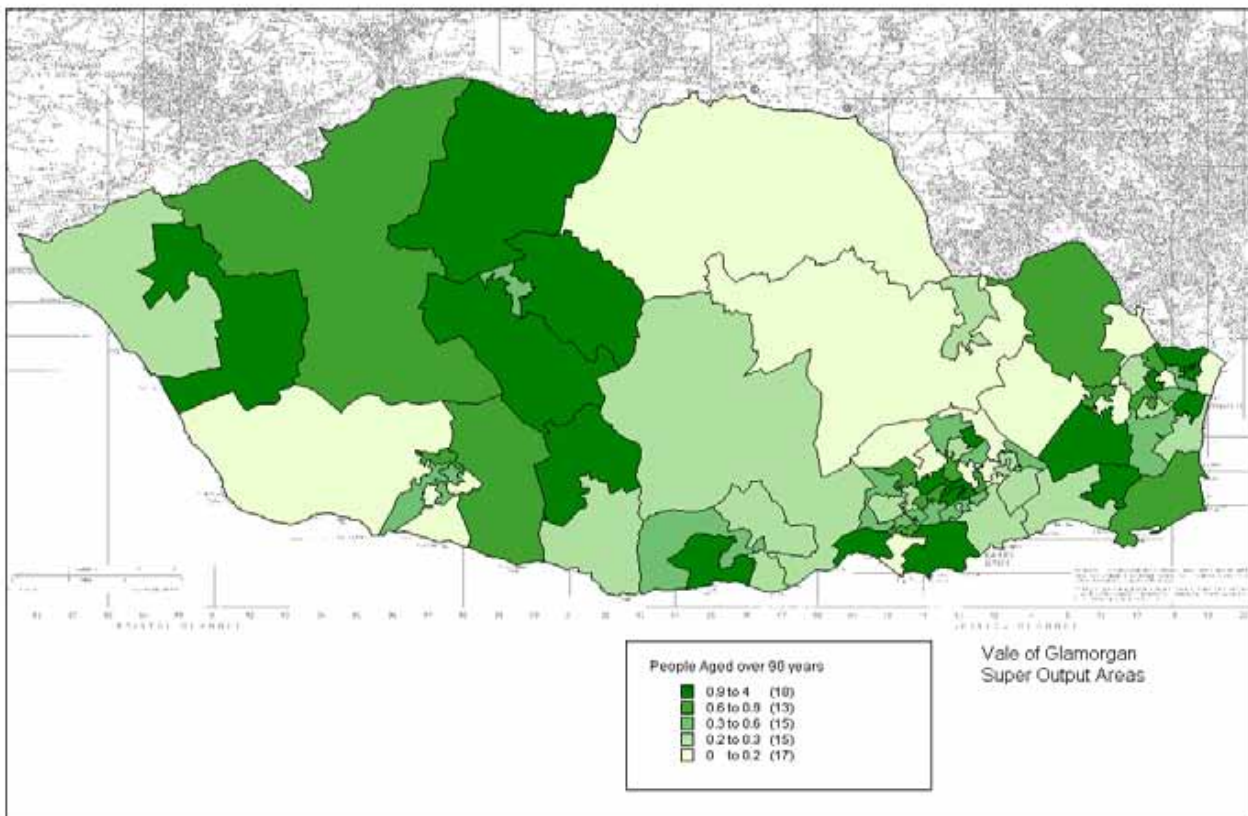
Proportion of Population who are Single



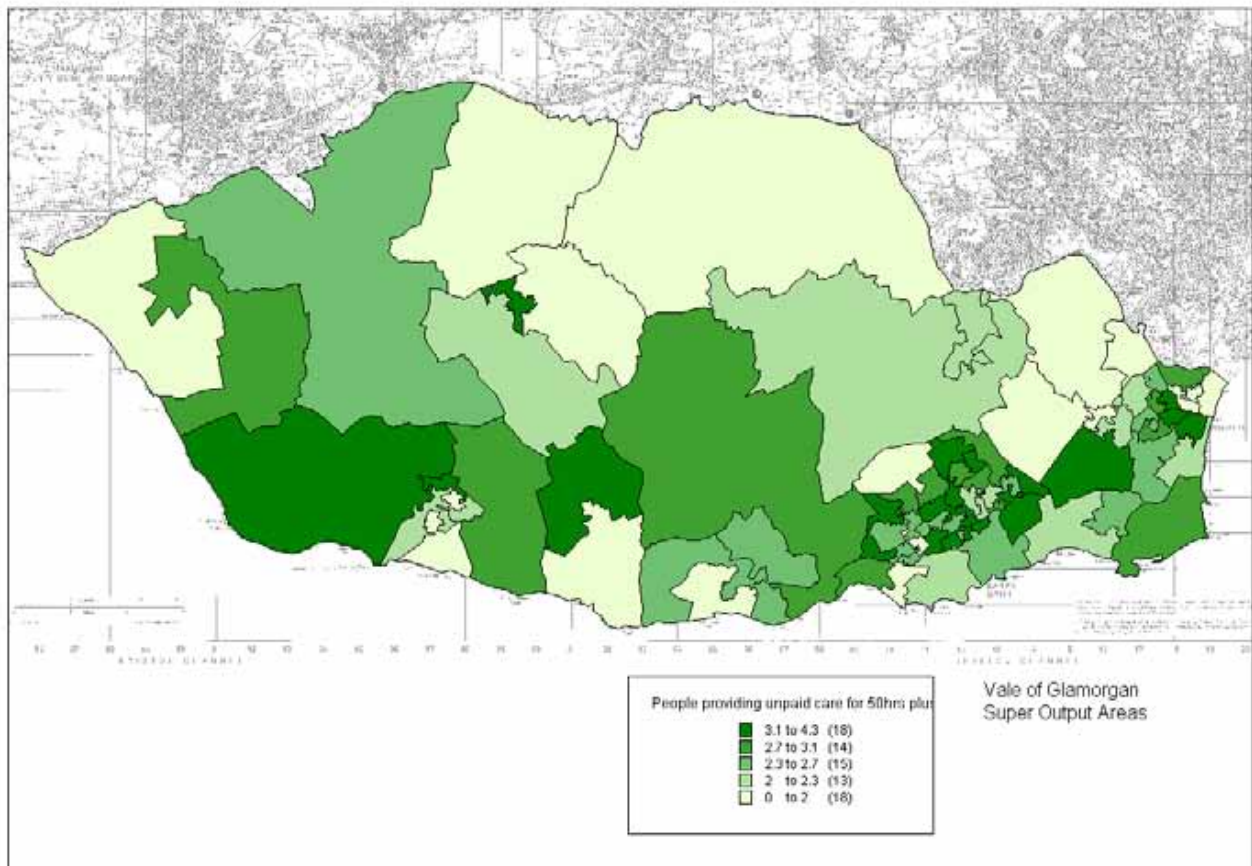
Residents in Nursing Care



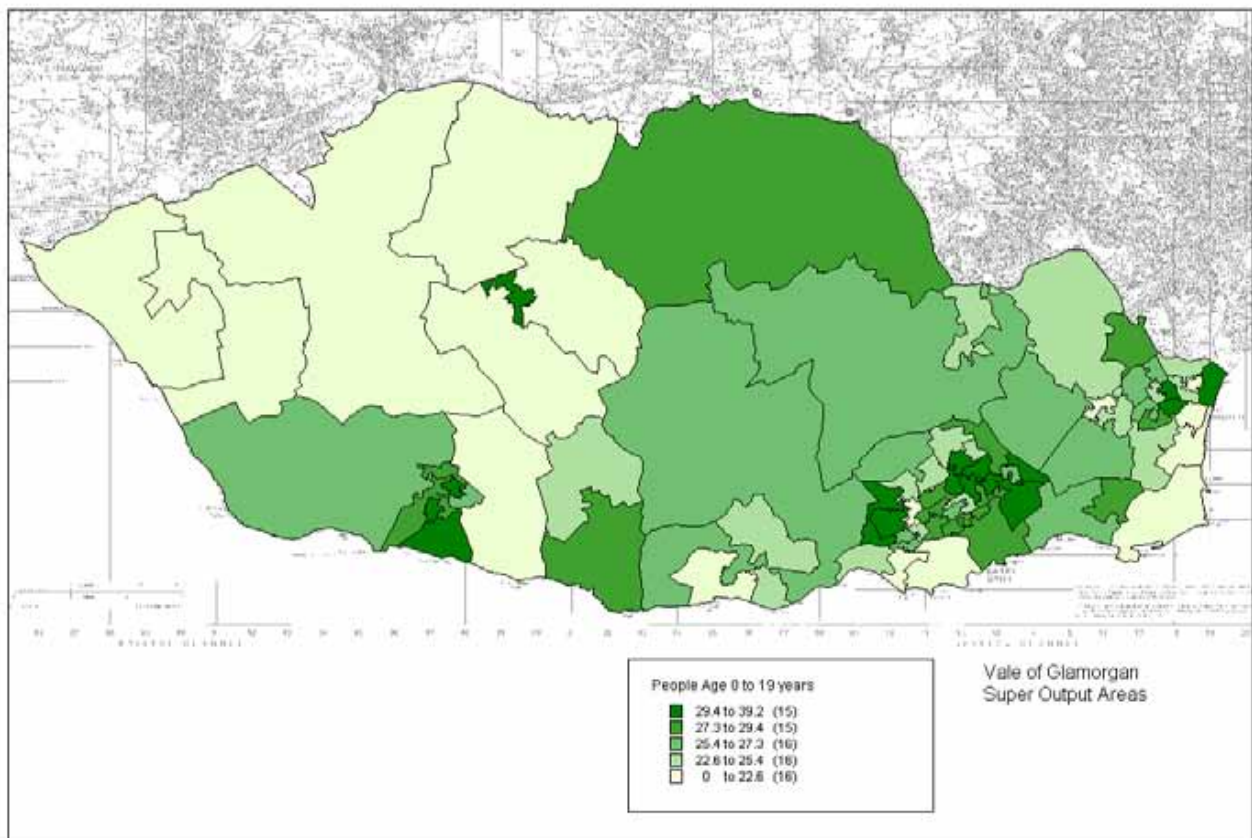
People Aged Over 90 years



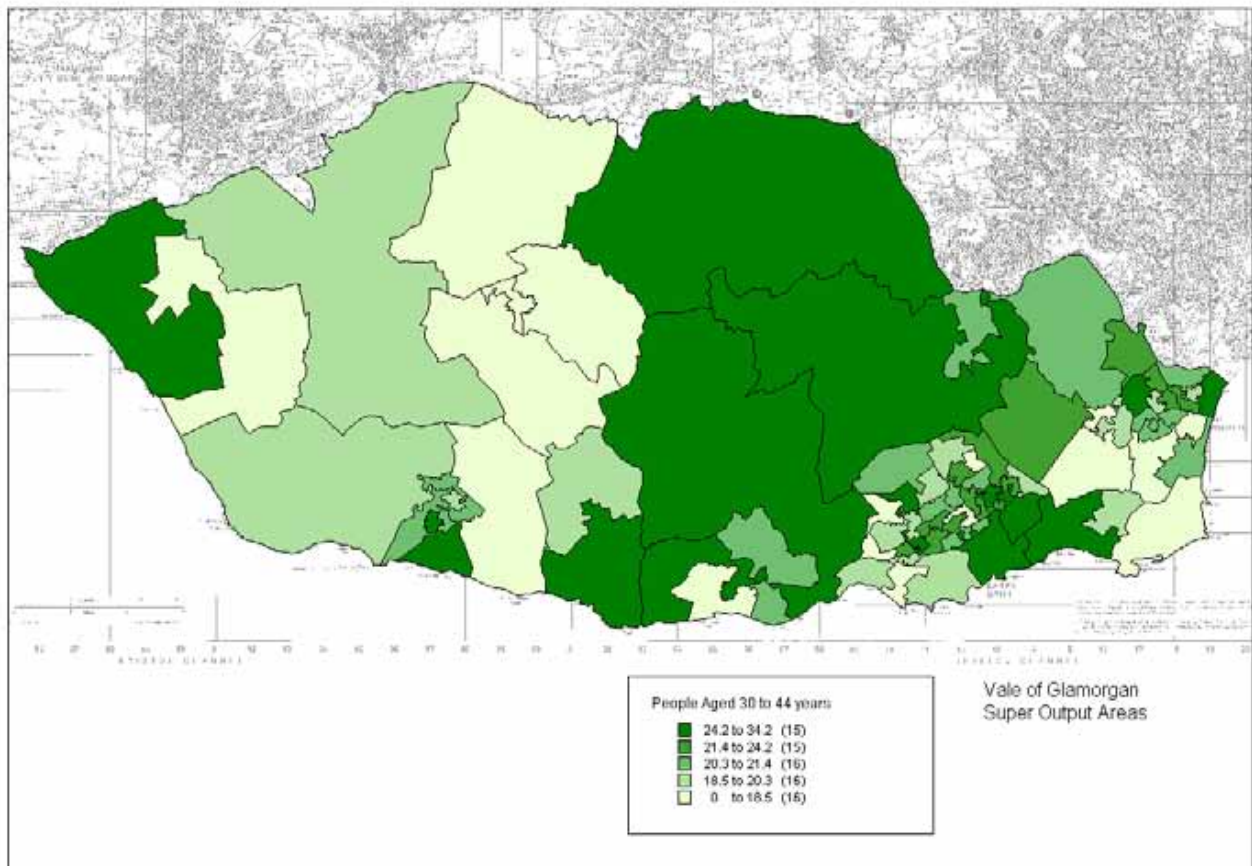
People providing over 50 hrs unpaid care



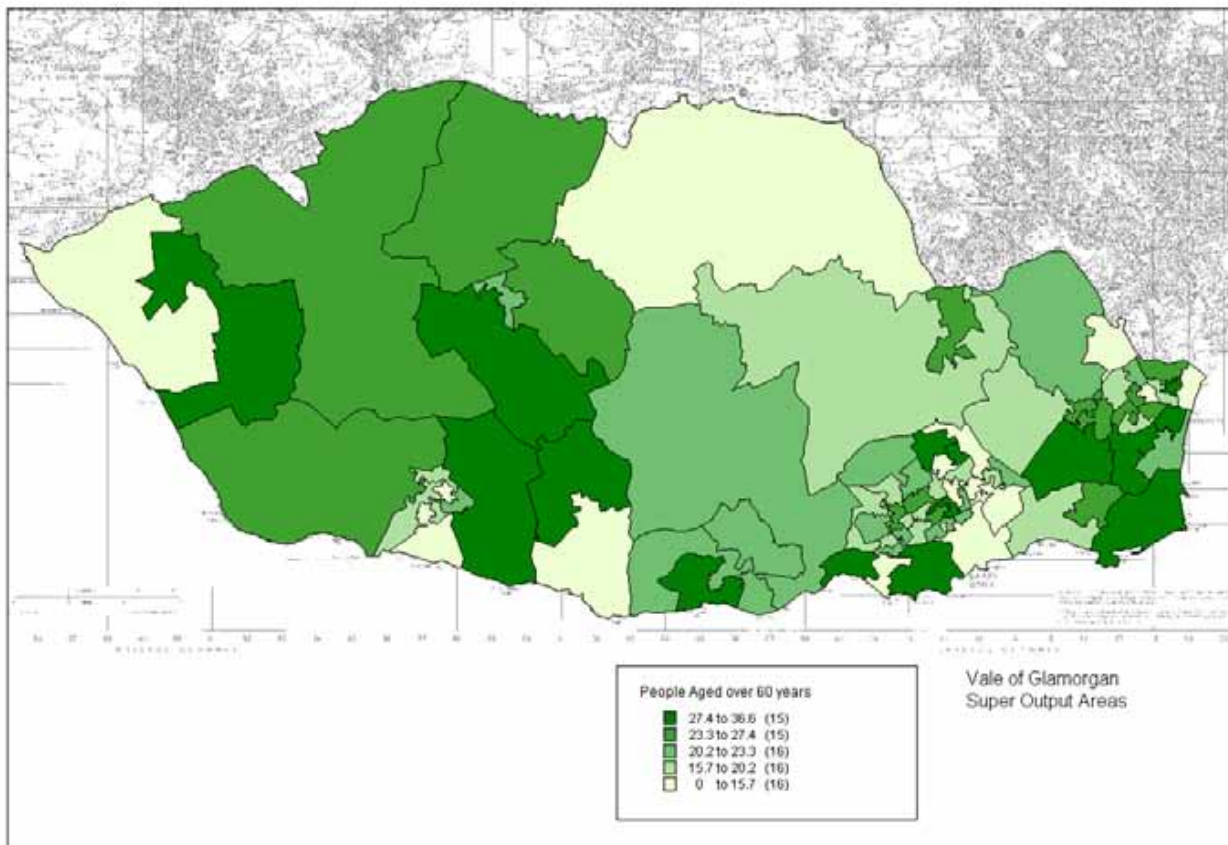
People aged 0 to 19



People aged 20 to 29



People aged over 60 years



Appendix 2

**Vale of Glamorgan
Super Output Areas
2001 Census Data**

Super Output Area	1991 Resident population: All people	Average household size	Average number of rooms per household	General health***: People whose health was: Good	General health***: People whose health was: Not good	Households comprising: One family and no others: Married couple
Baruc 1	1438	2.8	7.81	66.7	10.1	6.4
Baruc 2	1472	2.37	6	74.5	7.2	8.4
Baruc 3	1525	2.5	5.34	65.9	11.8	5.4
Baruc 4	1315	2.63	6.63	65.1	10	8.1
Buttills 1	1523	2.58	6.06	64.6	10.7	7.6
Buttills 2	1507	2.2	4.79	56.7	19.2	4.2
Buttills 3	1539	2.72	6.47	66.7	11.1	8.1
Buttills 4	1465	2.6	5.68	65.3	11.6	6.2
Cadoc 1	1515	2.2	4.36	59	16.3	4.7
Cadoc 2	1528	2.39	5.23	69.3	8.3	8.1
Cadoc 3	1436	2.14	5.01	66.2	12.3	6.4
Cadoc 4	1021	2.34	4.99	63.4	12.4	5.7
Cadoc 5	1500	2.71	6.22	64	13.2	6.7
Cadoc 6	1343	2.91	7.05	75.4	6.3	9.9
Castland 1	1401	2.63	5.76	56.2	17.9	5.9
Castland 2	2274	2.48	5.74	63.9	12	6.9
C'well 1	1188	2.03	5.72	69.2	9.9	9.7
C'well 2	1446	2.4	5.19	68.3	10.6	7.4
C'well 3	1555	2.65	5.14	64.2	13.1	8.2
C'well 4	1282	2.46	5.98	68	9.5	9.7
Court 1	1554	2.51	5.4	64.6	11.1	6.6
Court 2	1672	2.79	5.58	61.8	13	6.9
Court 3	1601	2.57	5.21	59.9	14.1	5.2
Cowbridge 1	1508	1.64	5.1	66.8	11	5.8
Cowbridge 2	1626	2.61	7.42	74.2	8.3	9.2
Cowbridge 3	1667	2.46	7.63	72.3	7.7	7.6
Cowbridge 4	1516	2.86	8.29	79.6	5.7	11.3
DP 1	1483	2.64	6.87	73.6	6.9	7.6
DP 2	1566	2.6	5.87	70.7	7.4	8.3
DP 3	1854	2.54	6.09	62.4	13.9	6.5
DP 4	1529	2.73	5.72	71	9	9.4
DP 5	1527	2.49	5.78	75.3	6	9.7
Dyfan 1	1710	2.36	5.51	68.3	9.3	8.7
Dyfan 2	1544	2.73	5.43	63.2	13.7	7.1
Dyfan 3	1797	2.79	5.21	55	18.3	5.7
Gibbdown 1	1312	2.85	4.86	66.3	11.3	6.7
Gibbdown 2	1500	2.12	4.37	61.3	14.6	5.4
Gibbdown 3	1416	2.39	5.06	63.9	12.1	6.8
Gibbdown 4	1590	3.07	5.82	62.7	13.8	6.1
Illtyd 1	1147	2.38	6.08	70.1	8.8	9.5
Illtyd 2	1441	2.63	5.24	65.7	11.3	6.8
Illtyd 3	1500	2.77	7.32	71.3	7.6	10.6
Illtyd 4	1465	2.21	5.78	67.3	10.9	5.5
Illtyd 5	1482	2.31	5.41	67.8	10.1	7
Illtyd 6	1330	2.15	5.49	75.7	6.3	11

Llandough	3840	2.3	5.54	67.6	9.1	6.8
Llandow/Ewenny	5212	2.74	7.73	74.9	8.1	10.1
LM 1	1588	2.93	6.14	74.4	6.8	9.8
LM 2	1640	2.13	5.56	66.8	9	6.7
LM 3	1517	2.32	7.21	76	5.1	12.2
LM 4	1503	2.59	5.71	65.9	11.5	8.6
LM 5	1533	2.52	6.95	76.3	6.1	7.8
LM 6	1537	2.29	4.77	65	11.1	7.4
LM 7	1473	2.48	5.66	78.8	4.1	11
Peterston-super-b	2249	2.7	7.74	72.3	12.3	8.2
Plymouth 1	1558	2.64	7.98	73.8	8	9.3
Plymouth 2	1507	2.58	6.17	64.1	11.9	7.3
Plymouth 3	2005	2.83	7.74	70.4	11	8.3
Rhose 1	1479	2.4	5.93	67.5	10.1	8.4
Rhose 2	1335	2.21	5.6	66.6	10.6	8.3
Rhose 3	1300	2.81	8.04	77	8	10.6
Rhose 4	1497	2.44	5.44	76.4	6.2	11.2
St. Athan 1	1527	2.52	5.43	62.4	14	6.8
St. Athan 2	2309	2.4	5.47	78.6	4.5	10.6
StAug 1	1485	2.27	5.97	67.5	11.7	5.8
StAug 2	1312	2.15	5.26	66.5	11.6	7.3
StAug 3	1438	2.4	5.8	65.2	11.8	6.4
StAug 4	1482	1.6	4.82	71.6	10	4.2
StBrides M 1	1240	2.66	7.8	65.3	14.9	6.9
StBrides M 2	1463	2.78	7.19	71.4	7.9	10.8
Stanwell 1	1425	2.58	5.88	63	13.1	7.5
Stanwell 2	1246	2.29	5.76	72.9	8.2	10.1
Stanwell 3	1467	2.5	6.1	57.1	16	6.3
Sully 1	1401	2.63	5.76	73.9	7.2	10.2
Sully 2	1769	2.4	7.42	67.4	9.2	8.4
Sully 3	1069	2.55	6.31	73.5	7.5	10.1
Wenvoe 1	1472	2.73	7.98	74.6	7.6	9.1
Wenvoe 2	1330	2.57	5.67	68.7	9.3	7.2

Appendix 2

Vale of Glamorgan
Super Output Areas
2001 Census Data

Super Output Area	Households comprising: One person: Other	Households comprising: One Person: Pensioner	Households: No adults in employment :with dependent children*	Households :Owner occupied: Owns outright	Households :Owner occupied: Owns with a mortgage or loan	Limiting long-term illness: people with limiting long-term illne
Baruc 1	5.4	7.7	2.2	17.8	17.5	22.5
Baruc 2	3.6	8.3	1	20.3	20.3	21.3
Baruc 3	7.3	7.8	3.2	10.2	18.4	24.3
Baruc 4	4.8	5.6	2	13.3	19	21.9
Buttlls 1	6.1	5.7	1.8	13.3	21.4	21.4
Buttlls 2	6.5	7.9	5.6	8.1	10.5	37.8
Buttlls 3	5	7.3	2.3	12.4	19.1	21.9
Buttlls 4	6.8	6.6	2.1	8.7	22.3	20.6
Cadoc 1	4.7	6.4	5.4	5.4	13.6	26.9
Cadoc 2	10.7	1.8	3.3	5.4	24.6	14.8
Cadoc 3	10.3	4.9	4.5	9.6	19	20.1
Cadoc 4	12.4	3.1	4.7	9.5	17.2	20.3
Cadoc 5	6.6	5.5	3.1	9.6	20.3	21.2
Cadoc 6	3.4	2.2	1	8.5	26.4	12.3
Castland 1	11.8	8.2	4.9	6.9	13.4	28
Castland 2	7.6	5.3	3.6	10.5	20.4	21.1
C'well 1	4.7	7.2	1.6	16.4	19.1	18.7
C'well 2	7.2	4	2.5	10.7	21	18.1
C'well 3	2.8	8.4	1.3	11.2	17.2	23.2
C'well 4	3.4	6.2	1.1	15.8	18	19.9
Court 1	6.9	5.1	3.9	11.9	20.5	18
Court 2	4.4	4.3	4.4	10.2	18.1	22
Court 3	4.9	4.4	6.3	8.7	13.4	24.2
Cowbridge 1	6.5	10.5	1.1	22.3	14.4	23.5
Cowbridge 2	2.5	4	0.9	18.8	16.9	16.7
Cowbridge 3	4.3	5.9	0.9	17.7	18.8	17.2
Cowbridge 4	2.3	2.9	1	16.1	17.6	12.1
DP 1	4.3	5.5	0.5	18.9	17.8	16.5
DP 2	2.9	5.6	0.8	20.1	17.5	17.3
DP 3	3.9	7.6	3.4	11.5	12.6	24.5
DP 4	4.3	5	0.7	15.5	20.8	19.4
DP 5	3	4.1	0.8	16.4	19.5	13.1
Dyfan 1	4.1	5.4	0.9	16.9	22.6	19
Dyfan 2	4.5	6.9	2.1	9.5	18	24.3
Dyfan 3	6.2	8.8	3.8	9.7	15.5	30.2
Gibbdown 1	4	1.8	8	3.5	13.1	16.6
Gibbdown 2	5.2	5.9	8.6	2.8	10.3	22.2
Gibbdown 3	4.7	8.6	2.1	12.7	19.2	23.2
Gibbdown 4	3.5	3.6	7.6	8	9.2	22.8
Illtyd 1	2.8	4.5	0.2	17.6	21.3	18.3
Illtyd 2	3.9	8.2	3.9	7.1	15.8	21.3
Illtyd 3	1.8	7	0.8	14.7	21.2	16.2
Illtyd 4	10.1	6	2.2	12.6	20.2	20.6
Illtyd 5	8.3	5.9	2.4	11.7	25.5	19.7

Illtyd 6	5.1	3.3	0.9	10.7	26	13.4
Llandough	5.6	5.4	1	17.8	19.4	18.2
Llandow/Eweny	2.1	3.2	0.8	16.6	16.5	16.5
LM 1	2	4	1	12.2	22	15.1
LM 2	2.6	7	1.4	20.7	16	21
LM 3	3.6	2.7	0.9	8.3	14.3	11.2
LM 4	3.2	7.5	1.4	16.9	16.5	23.8
LM 5	5	3.3	0.5	11.2	14.1	11.4
LM 6	2.5	5.4	2.6	7.4	17.1	21.5
LM 7	7.1	1.4	1	5.2	31.5	7.6
Peterston-super-8	3	2.8	0.4	16.1	16.3	20.1
Plymouth 1	2.5	7.2	0.1	21.7	17.7	17.2
Plymouth 2	2.3	8.4	1.7	20.5	14.9	26.1
Plymouth 3	5.8	6.7	0.2	16.9	14.1	26.3
Rhose 1	2.9	4.1	1.3	14.8	20.8	19.4
Rhose 2	5.6	7.1	2.9	12.3	20	20.6
Rhose 3	4.4	3	0.6	15.4	18.6	15.3
Rhose 4	4.4	3.4	1	10.5	25.1	12
St. Athan 1	4.4	7.4	2.2	14.8	15.3	23.2
St. Athan 2	5.5	0.7	1.5	3.9	19.5	8.5
StAug 1	14.4	11.9	0.5	20.1	19	22.6
StAug 2	9	7	1.6	15	19.4	19.7
StAug 3	6.8	7.2	1.9	16.4	18	23.1
StAug 4	18.4	5.6	2	10.4	25	16.8
StBrides M 1	3.1	4.2	0.2	19.5	16.5	24.9
StBrides M 2	2.5	4	0.2	16.8	17	17.3
Stanwell 1	1.2	5.9	2.8	10.5	15.3	23.7
Stanwell 2	6.1	6.2	0.8	13.7	17.7	15.9
Stanwell 3	6.3	10.5	5.1	9.4	12.2	29.9
Sully 1	5.8	4.2	1	12.7	25.1	14.4
Sully 2	2.2	5.4	1	21.8	17.4	22
Sully 3	8.8	5.9	1	16.2	25	13.8
Wenvoe 1	2.7	3.8	1	15.8	17.1	15.8
Wenvoe 2	4.9	5.8	0.9	22.4	17.5	21.5

Appendix 2

**Vale of Glamorgan
Super Output Areas
2001 Census Data**

Super Output Area	Households: With dependent children* : All ages	People aged 16 and over: Divorced	People aged 16 and over: Widowed	People aged 16 and over: Married	People aged 16 and over: Single (never married)	People aged: 0 - 19	Residents living in: Medical and care establishm ents: Other Nurs
Baruc 1	11.8	6.7	11.1	35.7	17.9	22.8	0
Baruc 2	10.5	4.5	11.8	43.4	14.4	19.8	0
Baruc 3	13.3	8.9	10.6	24	24.5	26.3	0
Baruc 4	13.3	6.6	8.1	34	20.6	27.1	0
Buttills 1	13.9	6.9	6.3	30.7	24.1	28.2	0
Buttills 2	12.9	9.4	15.5	22.6	23.5	24.1	0
Buttills 3	13.4	7.4	7.9	30.3	21.5	28.7	0
Buttills 4	12.8	8.6	6.7	26.6	27.3	26.4	0
Cadoc 1	14.9	10.8	6	26.5	20.5	30.6	0
Cadoc 2	16.8	8.9	2.7	26.1	27.1	29.4	0
Cadoc 3	15.6	10.1	4.6	27.7	24.3	29.1	0
Cadoc 4	16.8	9.9	3.4	22.3	29.8	33.8	0
Cadoc 5	15	9.2	5.5	31.4	22.7	28.5	0
Cadoc 6	15.6	6.5	2.7	36.1	20.4	28.7	0
Castland 1	14.3	10.9	6.9	24.7	25.7	27.5	0
Castland 2	15.5	9.6	5.4	27.2	24.4	30.7	0
C'well 1	13.9	7	6.5	38.6	19.6	26.4	0
C'well 2	13.6	7.8	4	32	25	26.1	0
C'well 3	12.1	6.3	9.3	39	17.4	24.4	0
C'well 4	13.8	5.4	6.8	38	17.6	28.8	0
Court 1	15.7	9.2	5.5	27.3	24.6	30.5	0
Court 2	15.4	7.2	5.6	29.8	22.9	33.3	0
Court 3	15.4	8.1	5.7	29.1	22.7	32.3	0
Cowbridge 1	9.3	7.7	11	42.8	15.6	16.7	0
Cowbridge 2	11.5	4.3	6.2	48.7	14.9	21.7	0
Cowbridge 3	11.1	5.6	8.3	44	16.8	21.1	0
Cowbridge 4	13.5	4.2	3.9	47.6	13.9	26.8	0
DP 1	10.4	4.8	6.8	46.7	17.8	19.6	0
DP 2	11.6	4	7	45.7	16.6	23.3	0
DP 3	13.3	7.4	7.3	35.9	17.5	26.3	0
DP 4	12.6	5.5	6.8	43.7	17.6	23.7	1.7
DP 5	13.4	5.6	5	45.1	15.3	25.4	0
Dyfan 1	12.8	5.7	5.9	44	17	22.7	0
Dyfan 2	13	7.2	9.3	31.1	20.4	28.5	0
Dyfan 3	13	9.9	10.8	29.1	22.2	25.3	2
Gibbdown 1	19.8	7.7	2.5	24.1	22.7	39.2	0
Gibbdown 2	17.7	8.5	5.2	23.1	21.8	37.4	0
Gibbdown 3	12.3	7.4	7.6	37.5	18.9	24.1	0
Gibbdown 4	16.9	8.1	4.9	25.2	20.3	37.5	0
Illtyd 1	11.6	4.7	5.8	46.7	15.7	22.5	0
Illtyd 2	15.3	7.2	7.3	29.1	22.9	30.9	0
Illtyd 3	13.5	4.7	7.6	43.8	14.1	25.1	0
Illtyd 4	13.1	9.4	7.1	27.7	26.4	25.5	0
Illtyd 5	14.3	9.4	7.3	28.8	25.3	24.5	0.7

Illtyd 6	14.8	5.3	4.6	41.7	16.9	27.3	0
Llandough	11	6.3	6	42.9	20.4	19.4	0
Llandow/Ewen	13.4	4.1	4.6	47.5	15.4	26.2	0.1
LM 1	13.9	4.3	4	45.3	14.7	28.3	0
LM 2	10.2	5.4	8.1	45.7	14.8	19.7	0
LM 3	15.6	5.1	2.7	45.4	13.3	29.7	0
LM 4	12.8	6.1	8.5	38.8	16.3	26.2	0
LM 5	10.2	4.8	3.7	35.3	32.5	38.6	0
LM 6	14.4	7.9	6	33.8	18.9	29	0
LM 7	15.8	7.6	2	34.8	20.7	29.2	0
Peterston-supe	11.2	4.6	4	46.1	20.6	20.9	0
Plymouth 1	11.2	4.3	7	49.2	13.4	22.6	0
Plymouth 2	10.5	4.3	9.1	45.5	14.9	21.1	0
Plymouth 3	10.1	5.4	14.7	38	16.9	21.1	4.8
Rhose 1	13	6	5.2	43.4	15.6	24.3	0
Rhose 2	14.4	8	7.1	34.8	17.8	26	0
Rhose 3	12.8	4.4	4.4	41.3	15.9	25.6	0
Rhose 4	15.8	6	3.8	39.4	16.2	29.1	0
St. Athan 1	12	7	10.1	35.8	16.6	25.2	0
St. Athan 2	15.7	6.2	1.6	27.7	27.9	34.9	0
StAug 1	9.2	9.4	10.8	28.9	26.2	18	2
StAug 2	13.5	10.2	6.5	27.8	28.9	22.8	0
StAug 3	12.3	8.4	9.5	32.7	21.1	24.7	0
StAug 4	10.3	12	4.5	24.2	33.8	18.7	0
StBrides M 1	9	4.3	9.4	47.5	17.2	15.7	1.8
StBrides M 2	13.4	3.7	5.6	45.4	14.2	26.1	0
Stanwell 1	13.9	5.3	7	32.8	19.3	31.1	0
Stanwell 2	13.5	6.6	6	38.6	19.3	28.3	0
Stanwell 3	15.1	8.9	12.2	26.9	21.1	28.6	2.1
Sully 1	15.4	7.7	4.5	36.7	18.1	27.1	0
Sully 2	11.1	4.8	6.6	49.3	11.5	21.7	0
Sully 3	13.9	9.8	4.9	37.1	17	25.9	0
Wenvoe 1	12	4.3	5.3	47	14.6	24.1	0
Wenvoe 2"	10.3	6.6	6.4	44.8	15.6	18.7	1.5

Appendix 2

**Vale of Glamorgan
Super Output Areas
2001 Census Data**

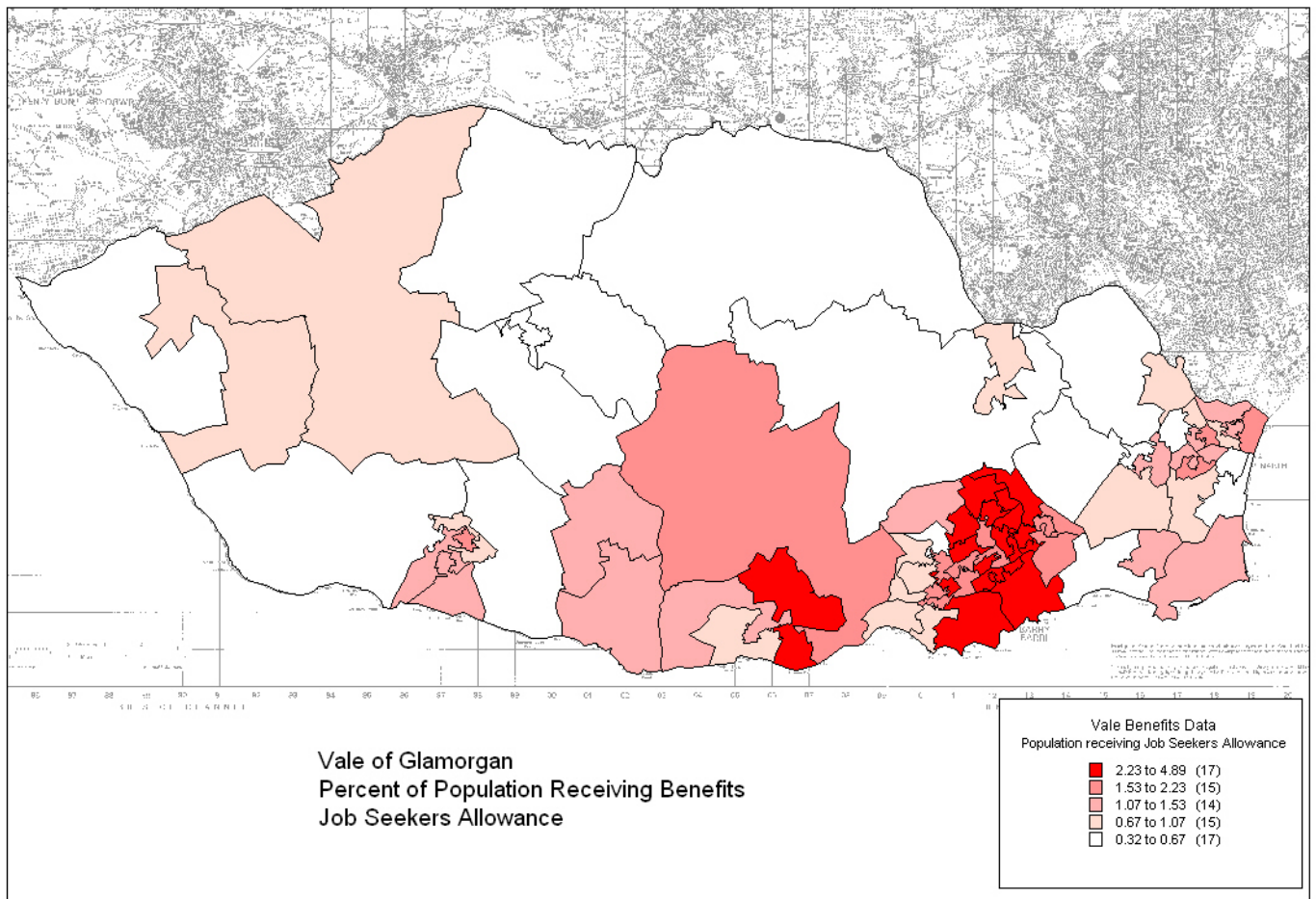
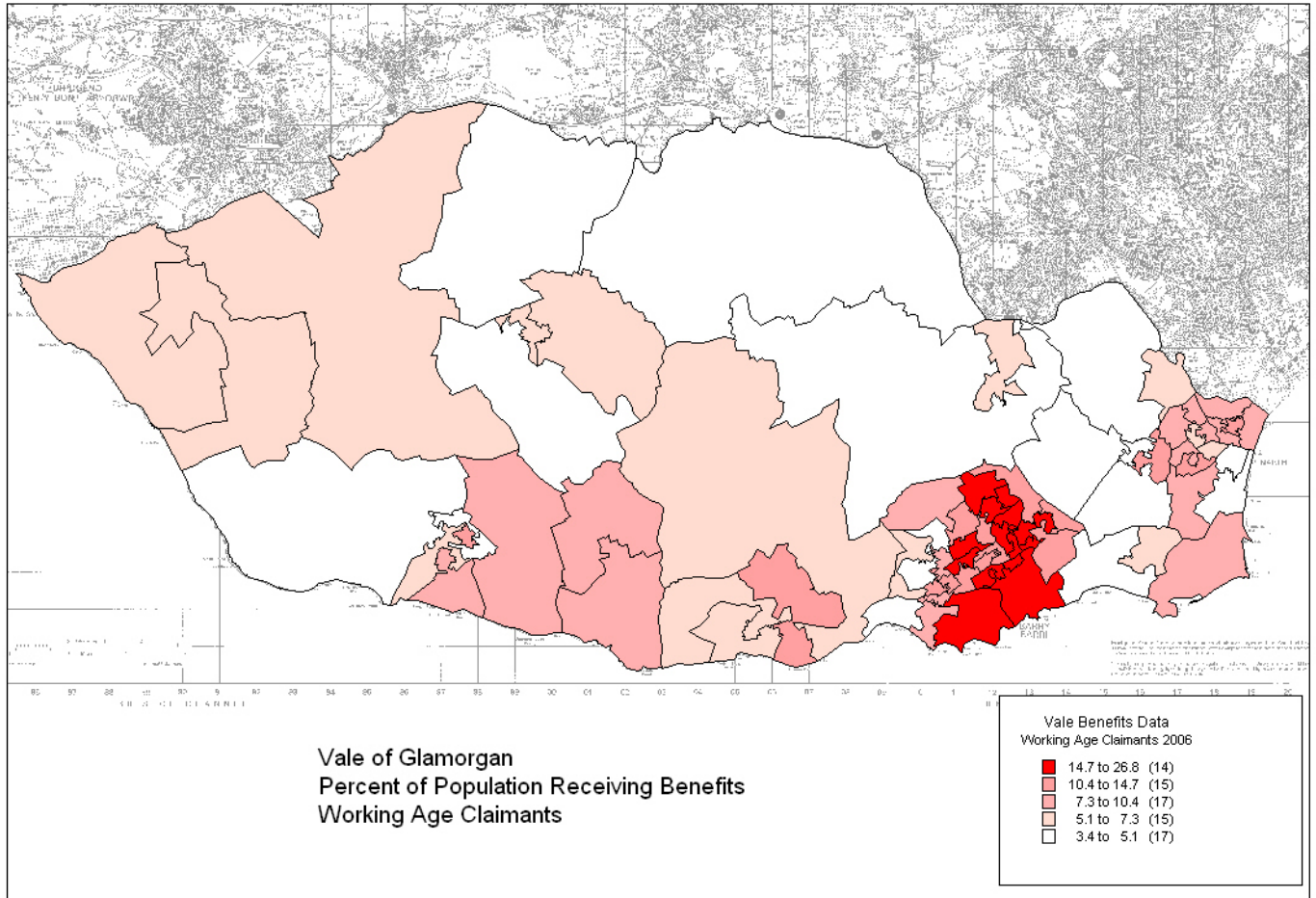
Super Output Area	People aged: 20 - 29	People aged: 30 - 44	People aged: 45 - 59	People aged: 60 & over	People aged: 90 & over	Provision of unpaid care#: people who provide unpaid care#: 50	Residents in communal establishments with limiting long-term ill	Residents living in: Medical and care establishments: Other Nurs
Baruc 1	7.5	18.5	20.7	1.6	29.8	2.9	0	0
Baruc 2	5.4	19.5	22.2	1.7	32.2	2	0	0
Baruc 3	13.6	18.6	18.6	0.6	21.7	2.6	0	0
Baruc 4	8.9	23.8	16.1	2.1	23.3	2.4	0	0
Buttills 1	12.4	23.3	16	0.7	19.7	2.5	0	0
Buttills 2	8.8	17.2	16.2	3.9	33.3	3.5	13.1	13.1
Buttills 3	10.3	24	16.6	0.4	19.2	3.6	0	0
Buttills 4	17.1	23.2	15.2	0.2	17.3	2.3	0	0
Cadoc 1	11.6	18.8	18.1	0.3	20.5	3.4	0	0
Cadoc 2	19.1	26.3	16	0	8.3	2	0	0
Cadoc 3	13.8	23.1	18.2	0	15.4	3	0	0
Cadoc 4	13.4	24.6	16.4	0.2	10.9	3.9	0	0
Cadoc 5	11.9	23.9	19.6	0	15.6	3	0	0
Cadoc 6	11.5	30.8	17.1	0.2	11.2	2.6	0	0
Castland 1	13.1	21.1	17.5	0.4	20.2	3.2	0	0
Castland 2	13.6	22.9	17.2	0.1	15.1	3.1	0	0
C'well 1	7.4	23.5	20.7	0.7	21.1	2.6	0	0
C'well 2	13.6	25.1	18.5	0.2	15.7	2.2	0	0
C'well 3	8.2	19.1	22.5	1.5	24.8	2.9	1.4	1.4
C'well 4	6.6	21.9	19.1	0.6	22.6	2.2	0	0
Court 1	15.3	21.7	16.9	0.1	14.7	2.1	0	0
Court 2	9.6	21.3	17.4	0.5	18	2.9	0	0
Court 3	11.6	17.8	17.1	0.5	20.7	4.3	0.6	0
Cowbridge 1	6.8	15.6	25.1	1.4	35	2.2	0	0
Cowbridge 2	5.7	17	27.7	1.2	27.2	1.8	1.7	0
Cowbridge 3	6.4	17.3	27.6	1.3	26.6	1.2	1.6	1.6
Cowbridge 4	5.6	21.4	27.9	0.1	17.8	1.1	0	0
DP 1	9.6	17.3	25.8	0.6	27.3	1.8	0.2	0
DP 2	7.6	18.6	23	0.1	26.8	2.1	0	0
DP 3	8	17.5	20	0.9	27.4	4	0	0
DP 4	8.8	20.4	23.8	0.7	22.5	1.6	1.7	0
DP 5	7.3	20.9	24.5	0	20.5	1.7	0	0
Dyfan 1	8	19.3	26	0	22.4	2.8	0	0
Dyfan 2	8.9	20.7	17.3	0.9	23.9	3.6	1.1	0
Dyfan 3	9.7	18.1	18.4	1.8	27.7	4	3	1
Gibbdown 1	13.1	23	15.2	0.2	9.1	3	0	0
Gibbdown 2	12	20.6	13.8	0.6	16	3.5	0	0
Gibbdown 3	10.2	18.9	17.9	0.4	28.3	3.6	0	0
Gibbdown 4	10.2	18.2	15.8	0.3	17.8	4	0	0
Illtyd 1	7.2	19	26.8	0.2	23.9	2.5	0	0
Illtyd 2	13.6	19.3	14.5	0.2	20.5	2.6	0	0

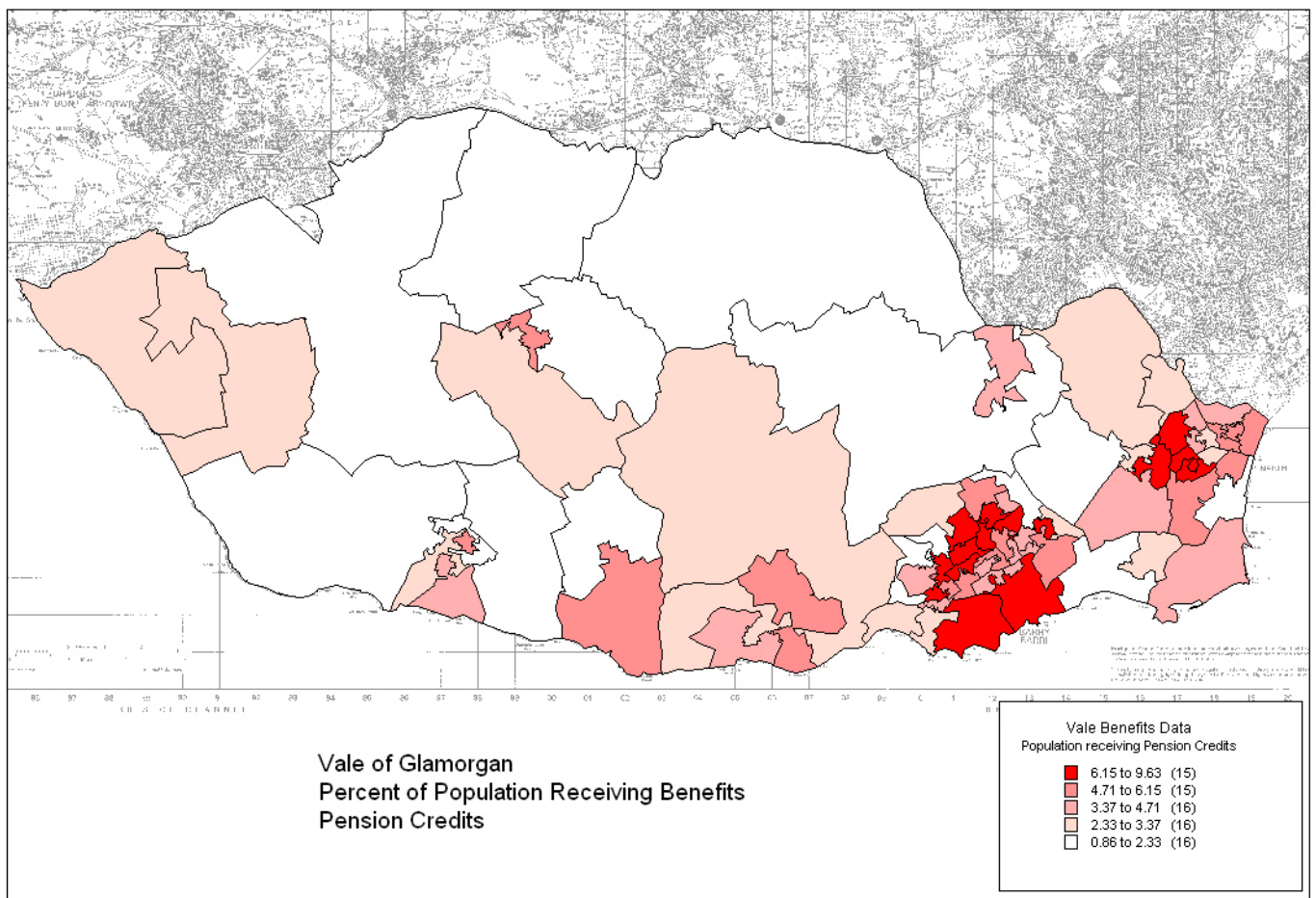
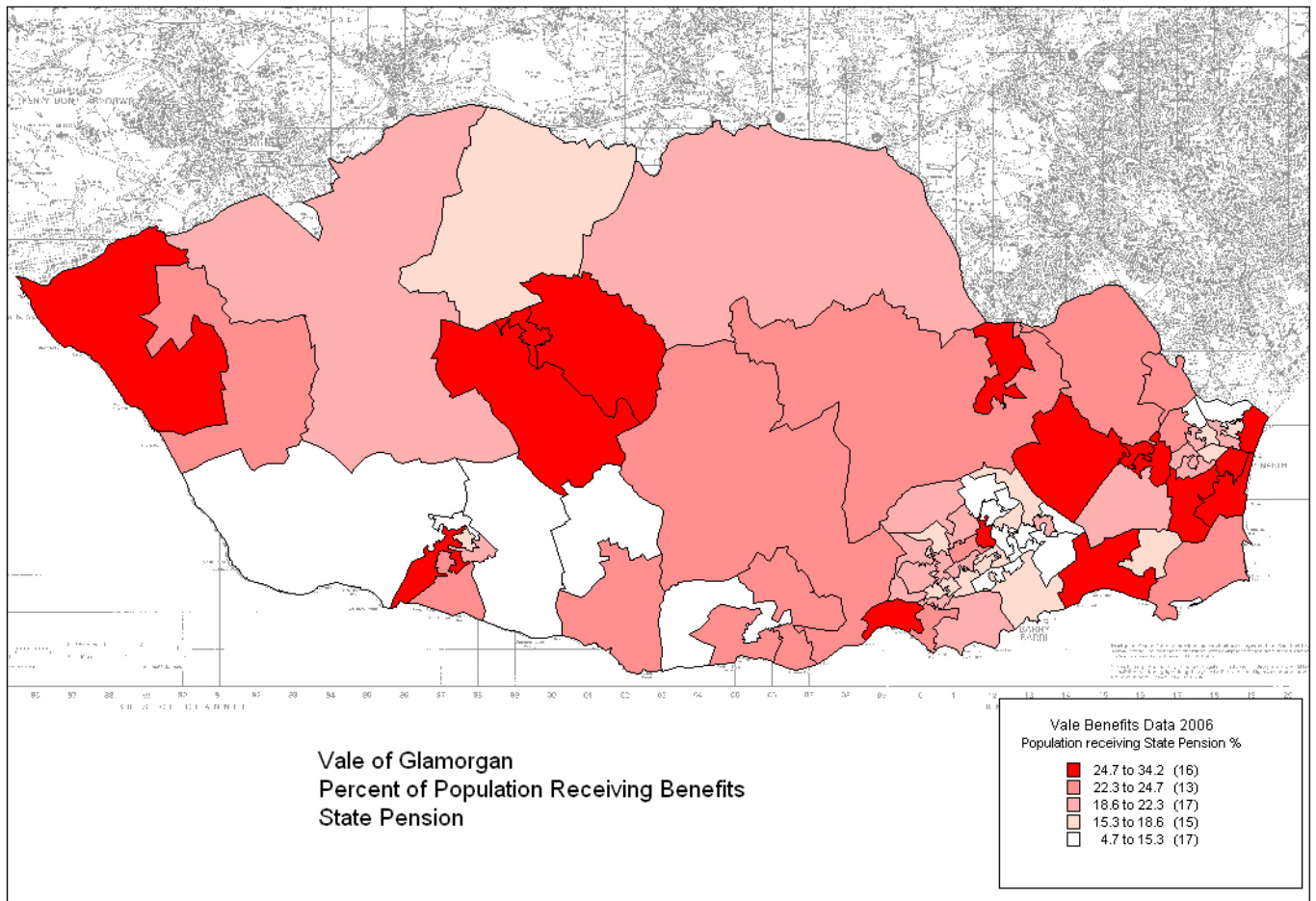
Illtyd 3	7.1	24.2	19.8	0.4	23.1	1.8	0	0
Illtyd 4	15.4	21.7	17.3	0.4	19.1	2.5	0	0
Illtyd 5	15.9	24.2	15.9	0.8	18.4	2.9	1.1	0
Illtyd 6	12.1	23.9	21.1	0	15.2	1.7	0	0
Llandough	10.5	20.2	23.6	0.6	25.8	2.3	0	0
Llandow/Ewen	5.7	20.6	25.8	0.1	20.8	2.2	0.1	0
LM 1	7.6	20.7	24.1	0.5	18.5	2.2	0	0
LM 2	5.7	18.4	25	0.7	30.4	2.7	0	0
LM 3	13.1	26.4	18.8	0.1	11.3	0.7	0	0
LM 4	6.3	19.7	22	0	24.4	3.3	0	0
LM 5	6.5	19.2	20.2	0.5	14.6	1.3	0	0
LM 6	9.9	21.1	21.9	0.6	17.6	4.2	0	0
LM 7	14.6	34.2	13.7	0	7.3	0.4	0	0
Peterston-supe	6.5	20.7	28.6	0.2	22.6	2	0	0
Plymouth 1	4.8	17	24.1	0.3	30.9	2.5	0	0
Plymouth 2	5.4	16.4	19.5	1	36.6	4.1	0	0
Plymouth 3	5.7	16.2	20.7	4	35.3	1.4	12.6	6.3
Rhoose 1	8.4	20.6	23.4	0.2	22.8	2.3	0	0
Rhoose 2	7.7	24.8	17.9	0.2	22.2	2.9	0	0
Rhoose 3	6.9	24.7	22	0.4	20.2	2.3	0	0
Rhoose 4	8.6	28.3	19.2	0.2	14.2	1.5	0	0
St. Athan 1	7.8	19.5	19.1	0.9	27.7	3.7	2.7	2.7
St. Athan 2	20.4	28.5	11.4	0.1	3.9	1.2	0	0
StAug 1	10.2	19.5	21.7	1.4	29.7	1.8	1.9	0
StAug 2	14.7	23.8	19.2	0.4	18.5	1.8	0	0
StAug 3	9.3	20.4	18.2	1.3	26.5	3	3.4	3.7
StAug 4	19.6	28.4	18.4	0.2	14.6	1.4	0	0
StBrides M 1	6.1	14.7	30.6	1.8	32	3	1.8	0
StBrides M 2	4.7	20.8	23.3	0.7	24.4	2.6	0	0
Stanwell 1	7.7	20.7	15.7	0.4	24.1	4.1	0	0
Stanwell 2	6.8	20.7	23.5	0.2	19.7	2.8	0	0
Stanwell 3	9.5	20.1	14.7	1.7	26.3	2.5	2.1	0
Sully 1	9.3	26.1	20.4	0.2	16.5	2	0	0
Sully 2	5.1	16.6	23.7	0.6	32.2	2.7	0	0
Sully 3	6.7	26.3	23.8	0	16.6	2.2	0	0
Wenvoe 1	6	20.3	25	0.2	23.8	2.1	0	0
Wenvoe 2"	8.7	17.7	24.5	0.8	29.8	2.4	1.5	0

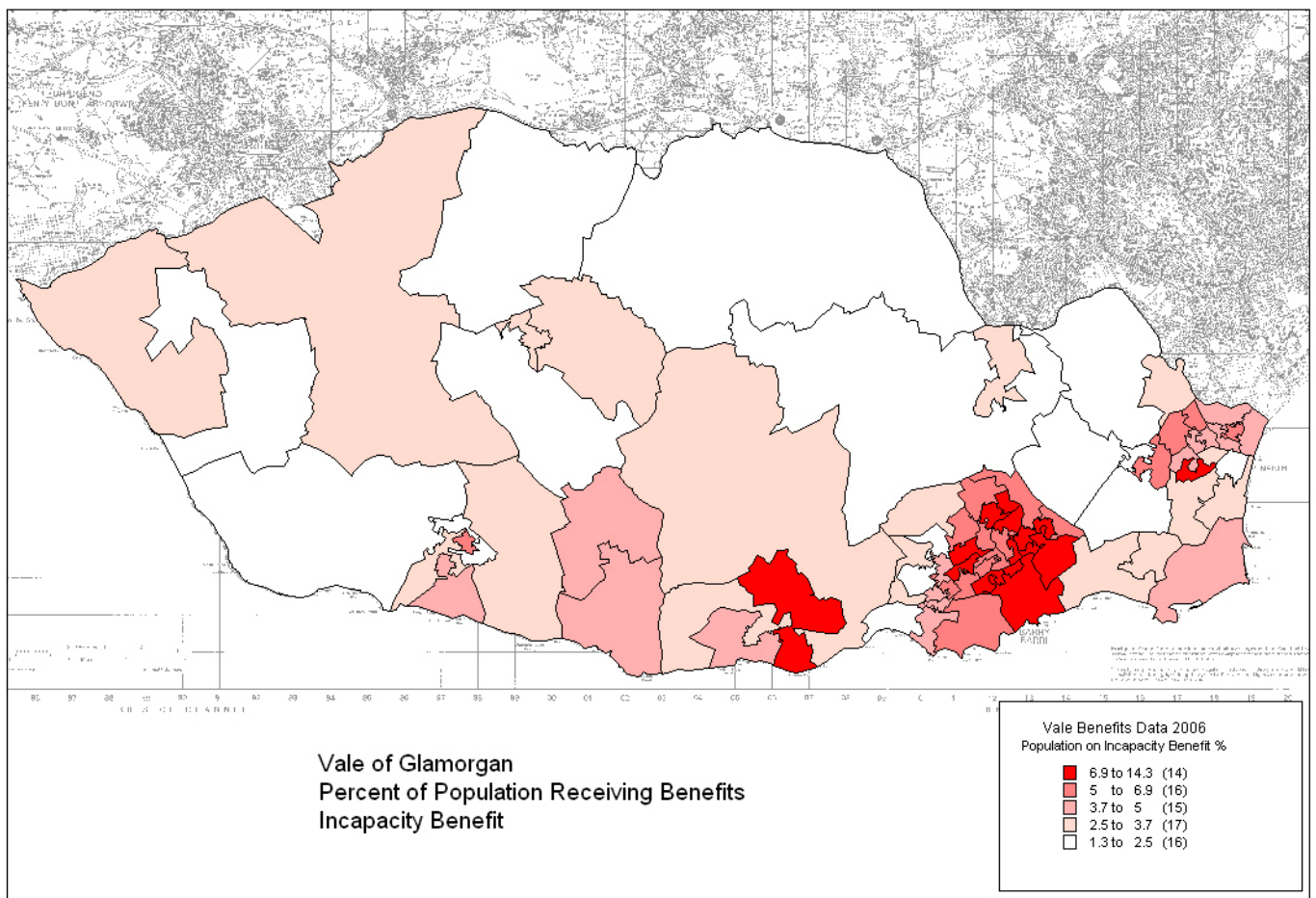
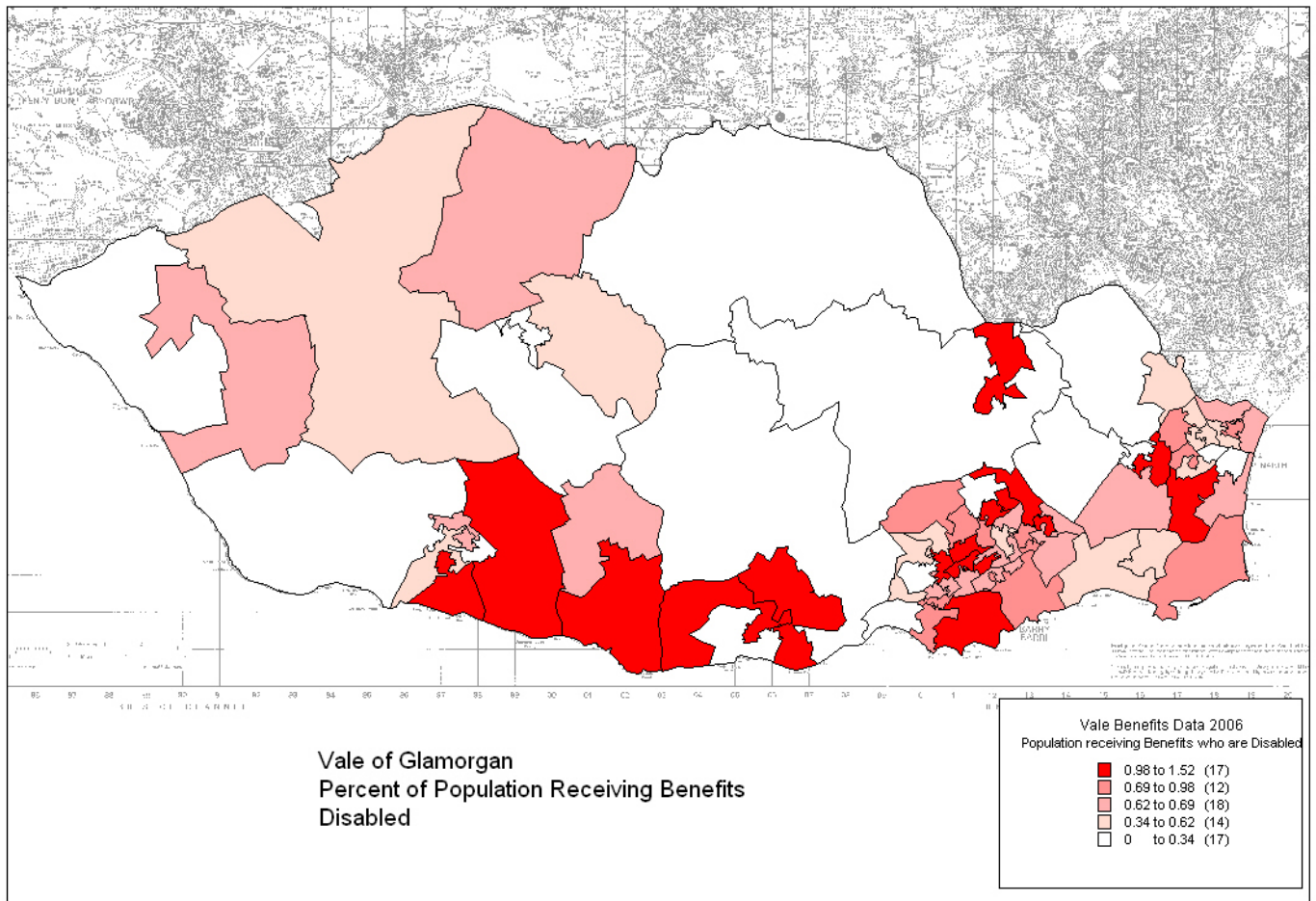
Appendix 3 Department of Work and Pensions Benefits Data

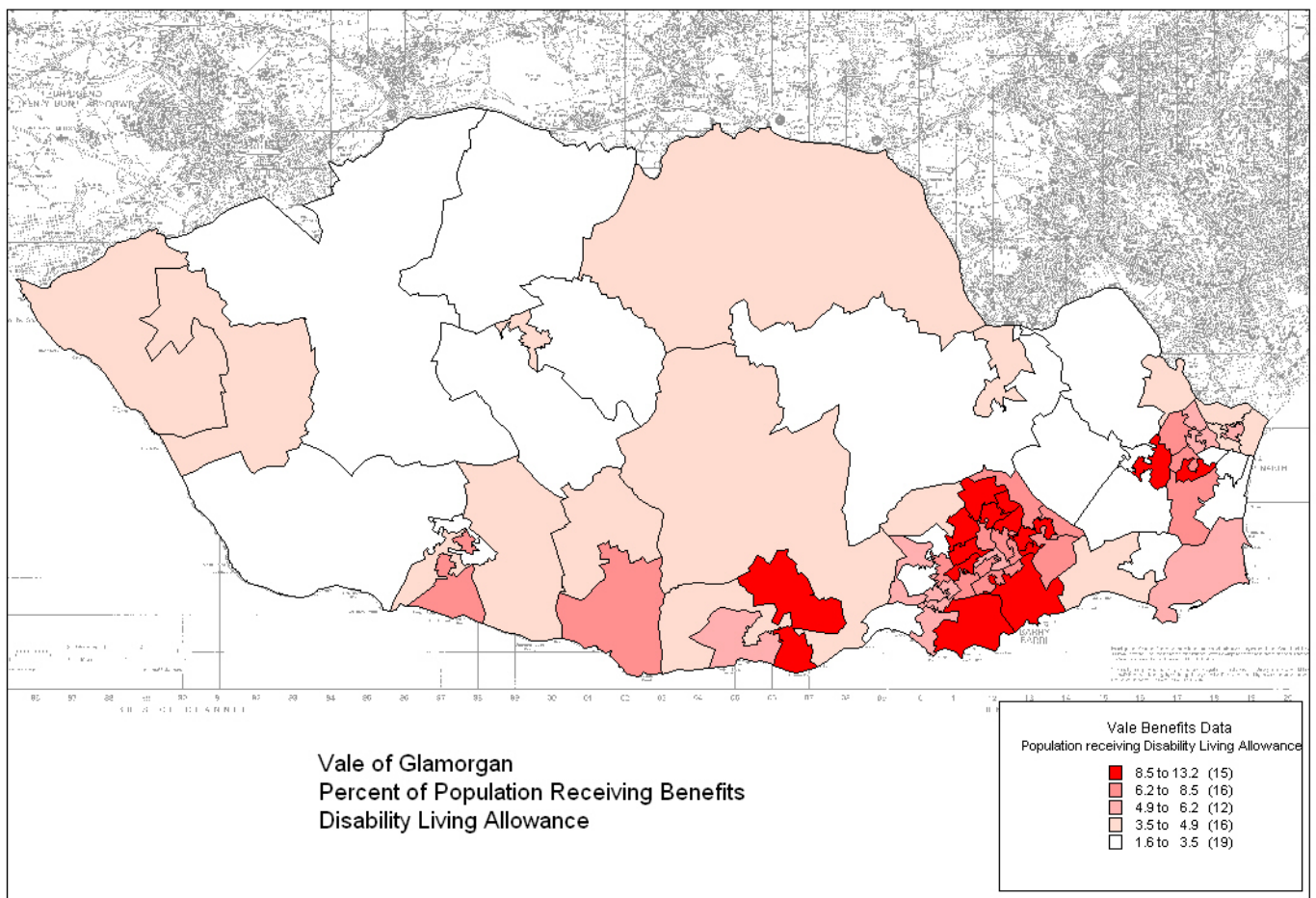
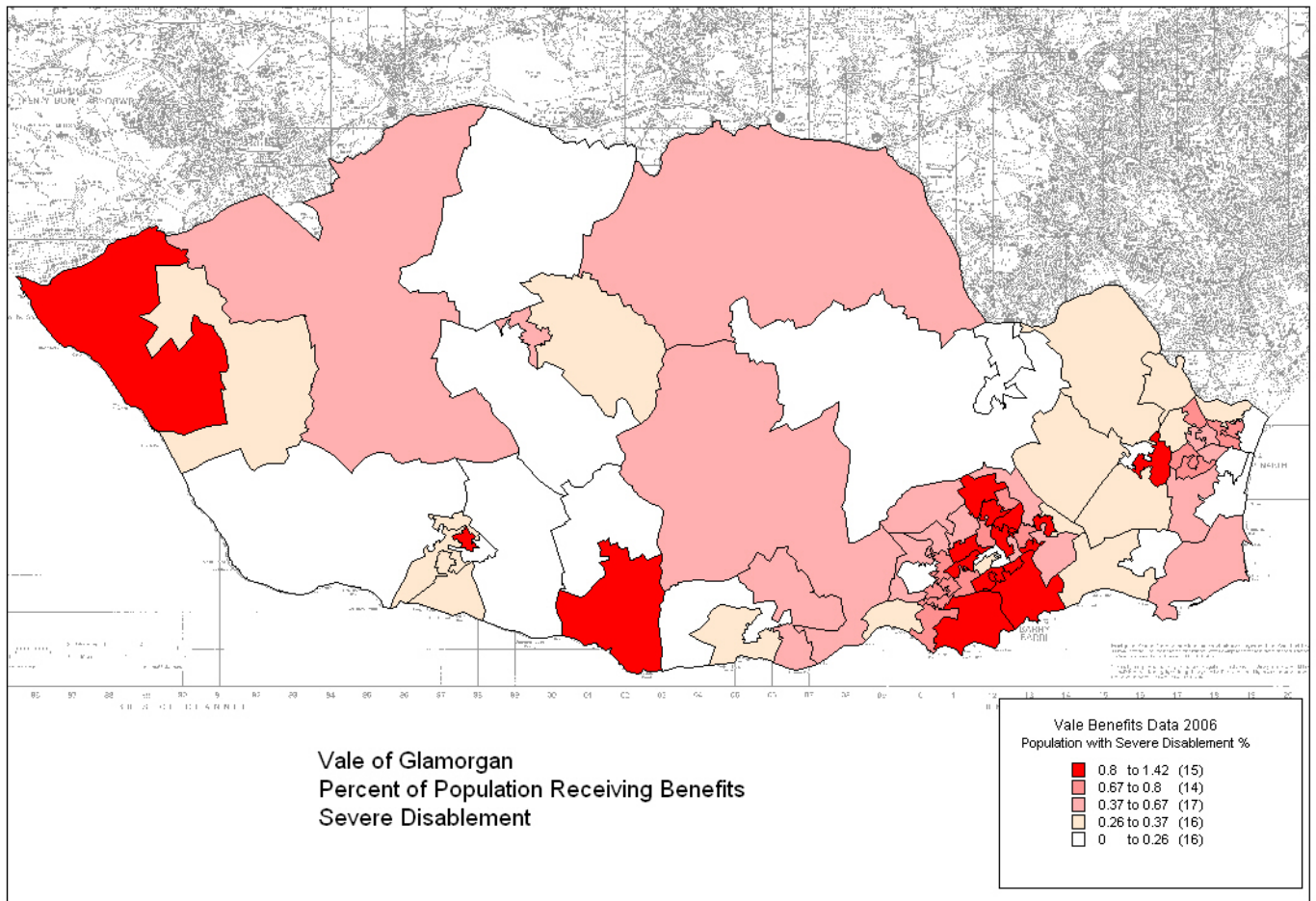
Table Benefits data by Super Output Area

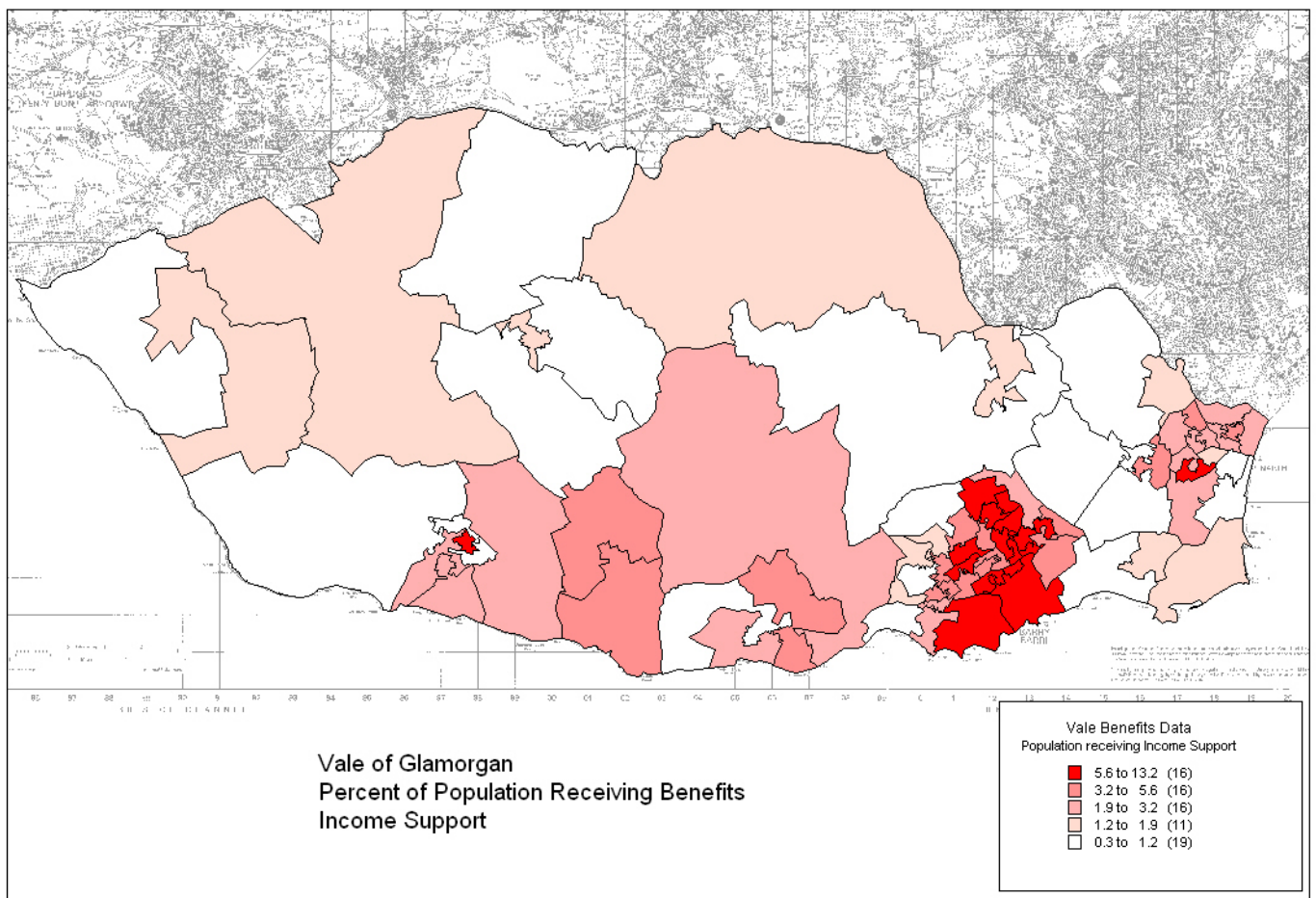
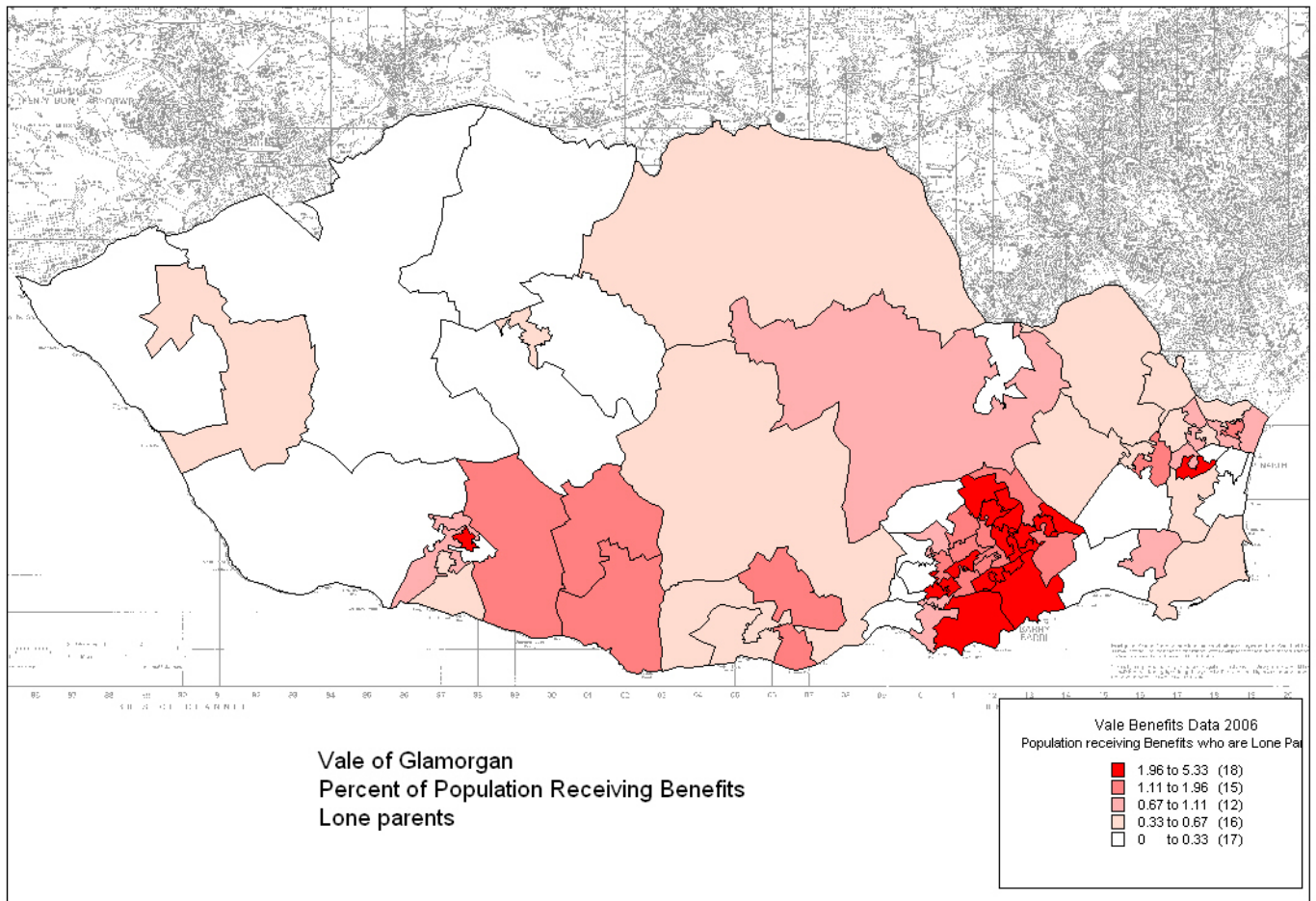
Theme Map Benefit Claimants - Working Age claimants
Theme Map Benefit Claimants - Incapacity Benefit
Theme Map Benefit Claimants – Severe Disablement
Theme Map Benefit Claimants – Income Support
Theme Map Benefit Claimants – Job Seekers Allowance
Theme Map Benefit Claimants – Disability Living Allowance
Theme Map Benefit Claimants – Pension Credits
Theme Map Benefit Claimants – Lone Parents
Theme Map Benefit Claimants – Carers
Theme Map Benefit Claimants – Disabled

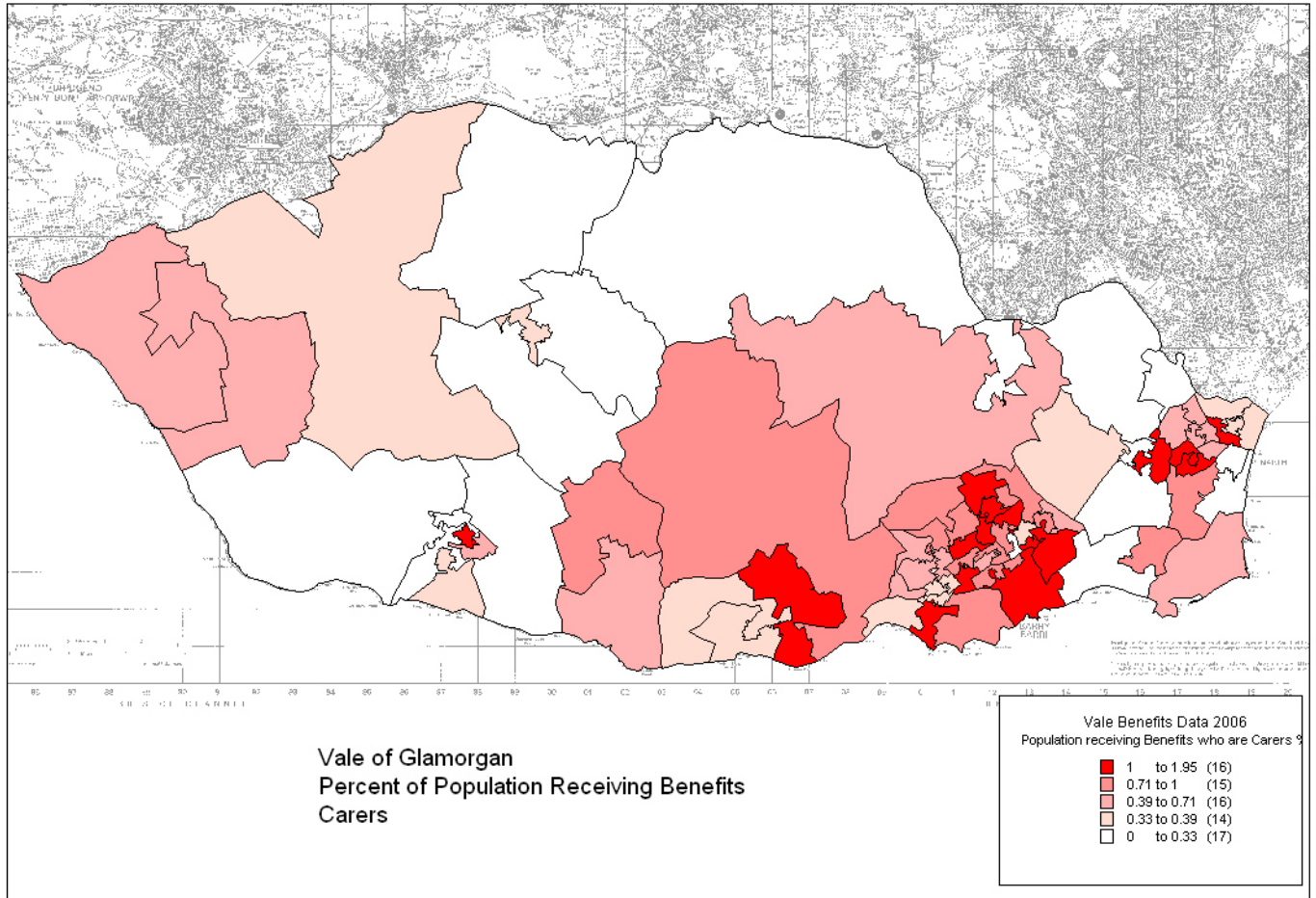












Appendix 3

Vale of Glamorgan**Super Output Areas****Department of Work and Pensions - Benefit Data**

SOAName	Disability Living Allowance	Pension Credits	State Pension	Group Lone Parents	Group Carers	Group Disabled
Baruc 1	5.21	3.12	24.68	1.04	1.04	0.69
Baruc 2	3.39	2.37	27.85	0.00	0.33	0.33
Baruc 3	8.85	8.19	20.32	2.62	0.98	0.98
Baruc 4	5.32	4.18	19.39	0.76	0.38	0.76
Buttrills 1	6.23	3.93	16.41	1.31	0.65	0.98
Buttrills 2	9.62	9.62	21.89	3.31	0.99	0.99
Buttrills 3	6.17	5.84	17.21	1.62	0.97	0.64
Buttrills 4	7.84	5.80	16.04	1.70	1.02	0.68
Cadoc 1	10.89	9.24	19.14	2.31	0.99	0.99
Cadoc 2	6.21	2.61	8.50	1.96	0.65	0.65
Cadoc 3	8.70	4.52	14.62	3.13	0.34	0.69
Cadoc 4	9.79	3.42	9.30	2.93	1.95	0.97
Cadoc 5	8.00	5.33	14.00	1.66	1.00	0.66
Cadoc 6	6.70	2.23	16.00	1.11	0.74	1.11
Castleland 1	13.20	7.85	18.55	3.56	1.07	0.71
Castleland 2	8.13	4.39	12.75	2.85	0.87	0.65
Cornerswell 1	5.47	3.36	18.51	0.42	0.42	0.42
Cornerswell 2	5.87	4.14	14.17	0.69	0.69	0.34
Cornerswell 3	6.43	7.07	24.11	0.64	0.64	0.96
Cornerswell 4	5.07	3.51	21.45	0.78	0.39	0.39
Court 1	7.40	3.86	13.19	2.89	0.32	0.64
Court 2	7.77	5.68	14.35	2.69	0.89	0.59
Court 3	10.93	8.11	18.42	3.74	1.24	0.62
Cowbridge 1	3.64	4.97	34.15	0.66	0.33	0.33
Cowbridge 2	2.46	2.46	26.44	0.30	0.30	0.00
Cowbridge 3	3.29	2.09	26.39	0.29	0.29	0.59
Cowbridge 4	2.96	1.31	17.81	0.00	0.32	0.65
Dinas Powys 1	2.36	2.02	27.30	0.33	0.33	0.33
Dinas Powys 2	2.87	2.55	26.18	0.63	0.31	0.31
Dinas Powys 3	8.62	8.36	26.15	1.88	1.07	1.07
Dinas Powys 4	3.27	3.59	21.90	0.32	0.32	0.65
Dinas Powys 5	3.27	2.94	23.90	0.65	0.00	0.32
Dyfan 1	4.67	2.63	21.92	0.29	0.87	0.87
Dyfan 2	9.39	6.15	20.40	1.94	0.97	0.97
Dyfan 3	10.85	8.90	23.37	1.66	1.11	1.11
Gibbonsdown 1	9.14	3.81	10.67	4.57	0.76	1.52
Gibbonsdown 2	11.00	7.66	14.66	5.33	1.00	1.00
Gibbonsdown 3	8.47	7.76	25.07	1.41	1.05	0.70
Gibbonsdown 4	8.80	4.71	14.46	4.08	1.57	0.31
Illtyd 1	5.23	1.30	21.79	0.00	0.43	0.43
Illtyd 2	7.28	7.98	20.81	1.73	0.69	1.04
Illtyd 3	2.66	3.66	21.66	0.00	0.66	0.33
Illtyd 4	5.11	5.11	16.72	2.04	0.34	0.68
Illtyd 5	5.73	6.41	16.86	2.69	0.33	0.67
Illtyd 6	3.38	1.87	16.16	0.75	0.75	0.37
Llandough	4.16	2.60	23.43	0.52	0.26	0.52
Llandow/Ewenny	3.45	1.72	20.33	0.19	0.38	0.57
Llantwit Major 1	3.46	1.57	18.89	0.31	0.62	0.31

Llantwit Major 2	4.87	3.35	29.57	0.91	0.30	0.60
Llantwit Major 3	3.95	1.97	13.18	1.31	0.32	0.98
Llantwit Major 4	7.65	4.65	24.28	0.66	0.33	0.99
Llantwit Major 5	2.28	1.95	14.67	0.32	0.32	0.32
Llantwit Major 6	8.45	5.20	16.26	2.27	1.30	0.65
Llantwit Major 7	1.69	1.01	9.16	0.67	0.00	0.67
Peterston-super-Ely	3.77	1.77	20.89	0.44	0.22	0.22
Plymouth (The Vale of G	2.88	1.28	29.20	0.00	0.32	0.64
Plymouth (The Vale of G	7.29	5.97	32.84	0.33	0.99	0.99
Plymouth (The Vale of G	2.74	5.73	31.42	0.24	0.24	0.24
Rhose 1	5.40	3.38	22.65	0.33	0.33	0.33
Rhose 2	8.61	5.99	23.97	1.12	1.12	1.12
Rhose 3	4.61	2.69	23.07	0.38	0.76	0.00
Rhose 4	4.00	2.33	14.36	0.66	0.33	1.00
St. Athan 1	7.53	5.23	24.23	1.30	0.65	0.98
St. Athan 2	3.89	0.86	4.76	1.29	0.86	0.64
St. Augustine's 1	4.71	5.38	27.60	1.01	0.33	0.67
St. Augustine's 2	5.71	4.95	16.38	1.14	0.38	0.76
St. Augustine's 3	4.86	4.86	22.25	1.04	1.04	0.34
St. Augustine's 4	4.38	3.37	12.82	0.33	0.33	0.67
St. Bride's Major 1	4.43	2.82	27.01	0.00	0.40	0.00
St. Bride's Major 2	4.78	2.39	22.55	0.34	0.68	0.68
Stanwell 1	6.31	6.31	19.64	1.05	1.05	0.70
Stanwell 2	2.40	2.80	18.05	0.00	0.40	0.00
Stanwell 3	9.20	8.52	21.81	2.38	1.02	0.34
Sully 1	2.85	2.49	15.34	0.71	0.71	0.35
Sully 2	4.80	1.97	31.09	0.28	0.28	0.56
Sully 3	5.61	4.67	23.85	0.46	0.46	0.93
Wenvoe 1	3.05	2.03	22.75	0.67	0.67	0.33
Wenvoe 2	4.88	3.75	30.07	0.00	0.00	1.12

Appendix 3

Vale of Glamorgan**Super Output Areas****Department of Work and Pensions - Benefit Data**

SOAName	Disability Living Allowance	Pension Credits	State Pension	Group Lone Parents	Group Carers	Group Disabled
Baruc 1	5.21	3.12	24.68	1.04	1.04	0.69
Baruc 2	3.39	2.37	27.85	0.00	0.33	0.33
Baruc 3	8.85	8.19	20.32	2.62	0.98	0.98
Baruc 4	5.32	4.18	19.39	0.76	0.38	0.76
Buttrills 1	6.23	3.93	16.41	1.31	0.65	0.98
Buttrills 2	9.62	9.62	21.89	3.31	0.99	0.99
Buttrills 3	6.17	5.84	17.21	1.62	0.97	0.64
Buttrills 4	7.84	5.80	16.04	1.70	1.02	0.68
Cadoc 1	10.89	9.24	19.14	2.31	0.99	0.99
Cadoc 2	6.21	2.61	8.50	1.96	0.65	0.65
Cadoc 3	8.70	4.52	14.62	3.13	0.34	0.69
Cadoc 4	9.79	3.42	9.30	2.93	1.95	0.97
Cadoc 5	8.00	5.33	14.00	1.66	1.00	0.66
Cadoc 6	6.70	2.23	16.00	1.11	0.74	1.11
Castleland 1	13.20	7.85	18.55	3.56	1.07	0.71
Castleland 2	8.13	4.39	12.75	2.85	0.87	0.65
Cornerswell 1	5.47	3.36	18.51	0.42	0.42	0.42
Cornerswell 2	5.87	4.14	14.17	0.69	0.69	0.34
Cornerswell 3	6.43	7.07	24.11	0.64	0.64	0.96
Cornerswell 4	5.07	3.51	21.45	0.78	0.39	0.39
Court 1	7.40	3.86	13.19	2.89	0.32	0.64
Court 2	7.77	5.68	14.35	2.69	0.89	0.59
Court 3	10.93	8.11	18.42	3.74	1.24	0.62
Cowbridge 1	3.64	4.97	34.15	0.66	0.33	0.33
Cowbridge 2	2.46	2.46	26.44	0.30	0.30	0.00
Cowbridge 3	3.29	2.09	26.39	0.29	0.29	0.59
Cowbridge 4	2.96	1.31	17.81	0.00	0.32	0.65
Dinas Powys 1	2.36	2.02	27.30	0.33	0.33	0.33
Dinas Powys 2	2.87	2.55	26.18	0.63	0.31	0.31
Dinas Powys 3	8.62	8.36	26.15	1.88	1.07	1.07
Dinas Powys 4	3.27	3.59	21.90	0.32	0.32	0.65
Dinas Powys 5	3.27	2.94	23.90	0.65	0.00	0.32
Dyfan 1	4.67	2.63	21.92	0.29	0.87	0.87
Dyfan 2	9.39	6.15	20.40	1.94	0.97	0.97
Dyfan 3	10.85	8.90	23.37	1.66	1.11	1.11
Gibbonsdown 1	9.14	3.81	10.67	4.57	0.76	1.52
Gibbonsdown 2	11.00	7.66	14.66	5.33	1.00	1.00
Gibbonsdown 3	8.47	7.76	25.07	1.41	1.05	0.70
Gibbonsdown 4	8.80	4.71	14.46	4.08	1.57	0.31
Illtyd 1	5.23	1.30	21.79	0.00	0.43	0.43
Illtyd 2	7.28	7.98	20.81	1.73	0.69	1.04
Illtyd 3	2.66	3.66	21.66	0.00	0.66	0.33
Illtyd 4	5.11	5.11	16.72	2.04	0.34	0.68
Illtyd 5	5.73	6.41	16.86	2.69	0.33	0.67
Illtyd 6	3.38	1.87	16.16	0.75	0.75	0.37
Llandough	4.16	2.60	23.43	0.52	0.26	0.52
Llandow/Ewenny	3.45	1.72	20.33	0.19	0.38	0.57
Llantwit Major 1	3.46	1.57	18.89	0.31	0.62	0.31

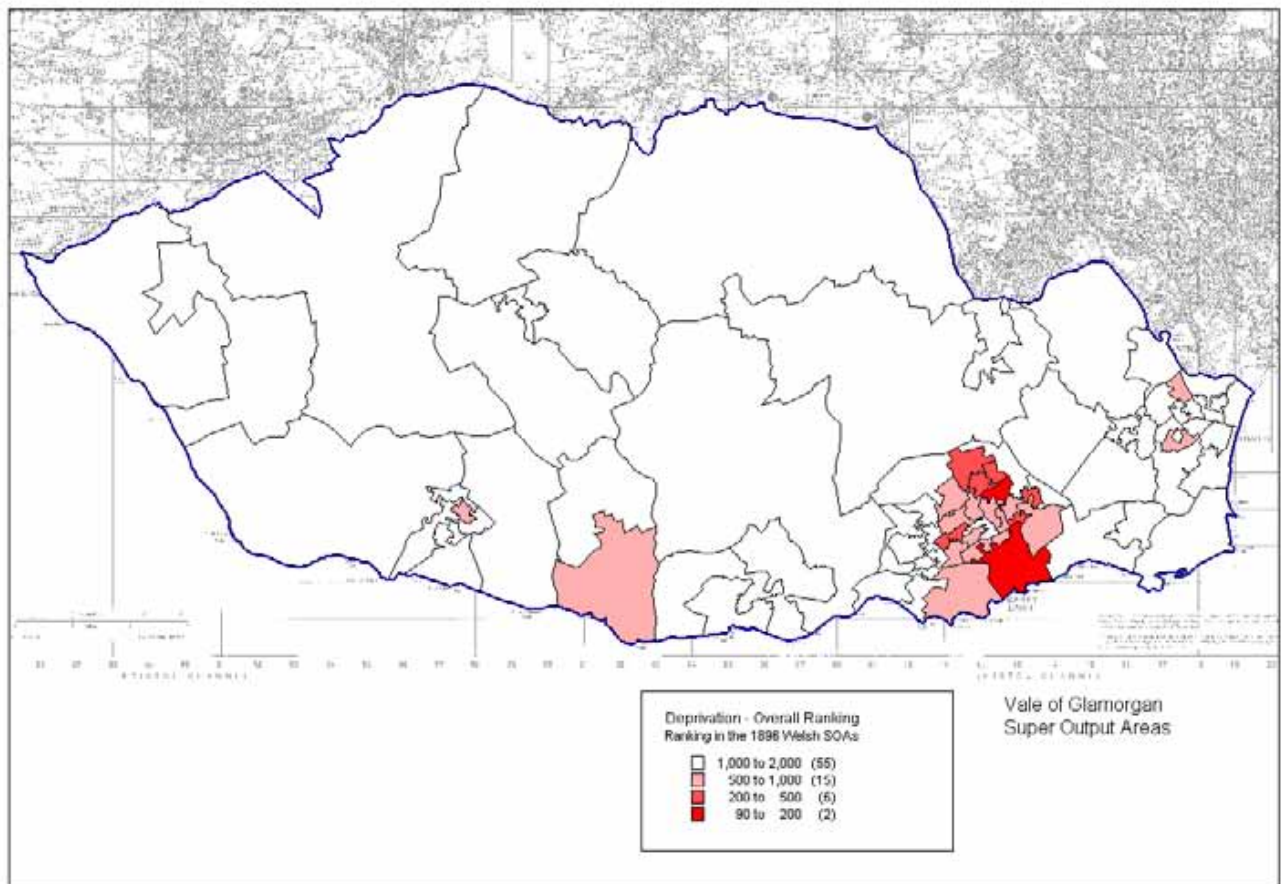
Llantwit Major 2	4.87	3.35	29.57	0.91	0.30	0.60
Llantwit Major 3	3.95	1.97	13.18	1.31	0.32	0.98
Llantwit Major 4	7.65	4.65	24.28	0.66	0.33	0.99
Llantwit Major 5	2.28	1.95	14.67	0.32	0.32	0.32
Llantwit Major 6	8.45	5.20	16.26	2.27	1.30	0.65
Llantwit Major 7	1.69	1.01	9.16	0.67	0.00	0.67
Peterston-super-Ely	3.77	1.77	20.89	0.44	0.22	0.22
Plymouth (The Vale of G	2.88	1.28	29.20	0.00	0.32	0.64
Plymouth (The Vale of G	7.29	5.97	32.84	0.33	0.99	0.99
Plymouth (The Vale of G	2.74	5.73	31.42	0.24	0.24	0.24
Rhose 1	5.40	3.38	22.65	0.33	0.33	0.33
Rhose 2	8.61	5.99	23.97	1.12	1.12	1.12
Rhose 3	4.61	2.69	23.07	0.38	0.76	0.00
Rhose 4	4.00	2.33	14.36	0.66	0.33	1.00
St. Athan 1	7.53	5.23	24.23	1.30	0.65	0.98
St. Athan 2	3.89	0.86	4.76	1.29	0.86	0.64
St. Augustine's 1	4.71	5.38	27.60	1.01	0.33	0.67
St. Augustine's 2	5.71	4.95	16.38	1.14	0.38	0.76
St. Augustine's 3	4.86	4.86	22.25	1.04	1.04	0.34
St. Augustine's 4	4.38	3.37	12.82	0.33	0.33	0.67
St. Bride's Major 1	4.43	2.82	27.01	0.00	0.40	0.00
St. Bride's Major 2	4.78	2.39	22.55	0.34	0.68	0.68
Stanwell 1	6.31	6.31	19.64	1.05	1.05	0.70
Stanwell 2	2.40	2.80	18.05	0.00	0.40	0.00
Stanwell 3	9.20	8.52	21.81	2.38	1.02	0.34
Sully 1	2.85	2.49	15.34	0.71	0.71	0.35
Sully 2	4.80	1.97	31.09	0.28	0.28	0.56
Sully 3	5.61	4.67	23.85	0.46	0.46	0.93
Wenvoe 1	3.05	2.03	22.75	0.67	0.67	0.33
Wenvoe 2	4.88	3.75	30.07	0.00	0.00	1.12

Appendix 4 2006 Welsh Index of Multiple Deprivation

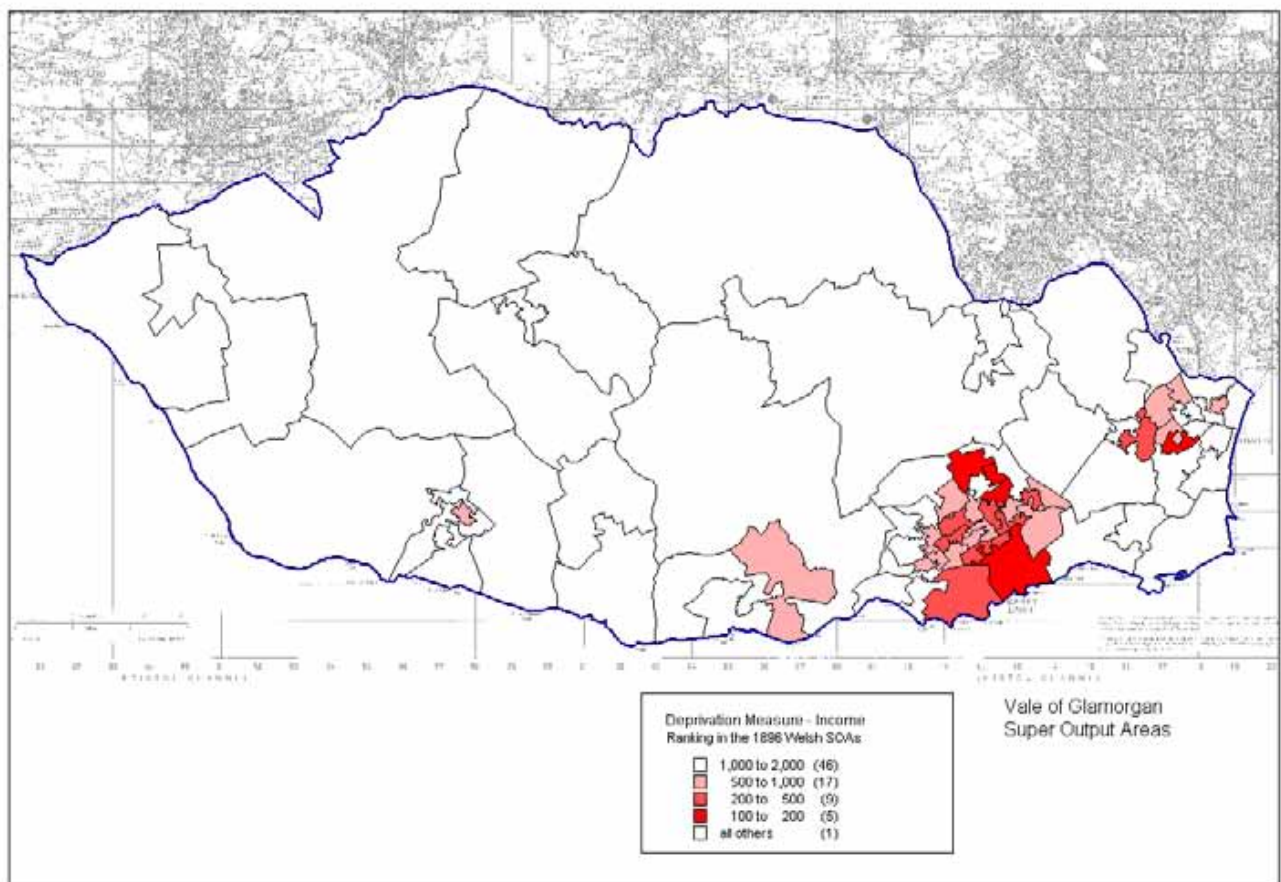
Table Deprivation Rankings by Super Output Area

Theme Map Income Deprivation
Theme Map Employment Deprivation
Theme Map Health Deprivation
Theme Map Education Deprivation
Theme Map Housing Deprivation
Theme Map Physical Environment Deprivation
Theme Map Access to Services Deprivation

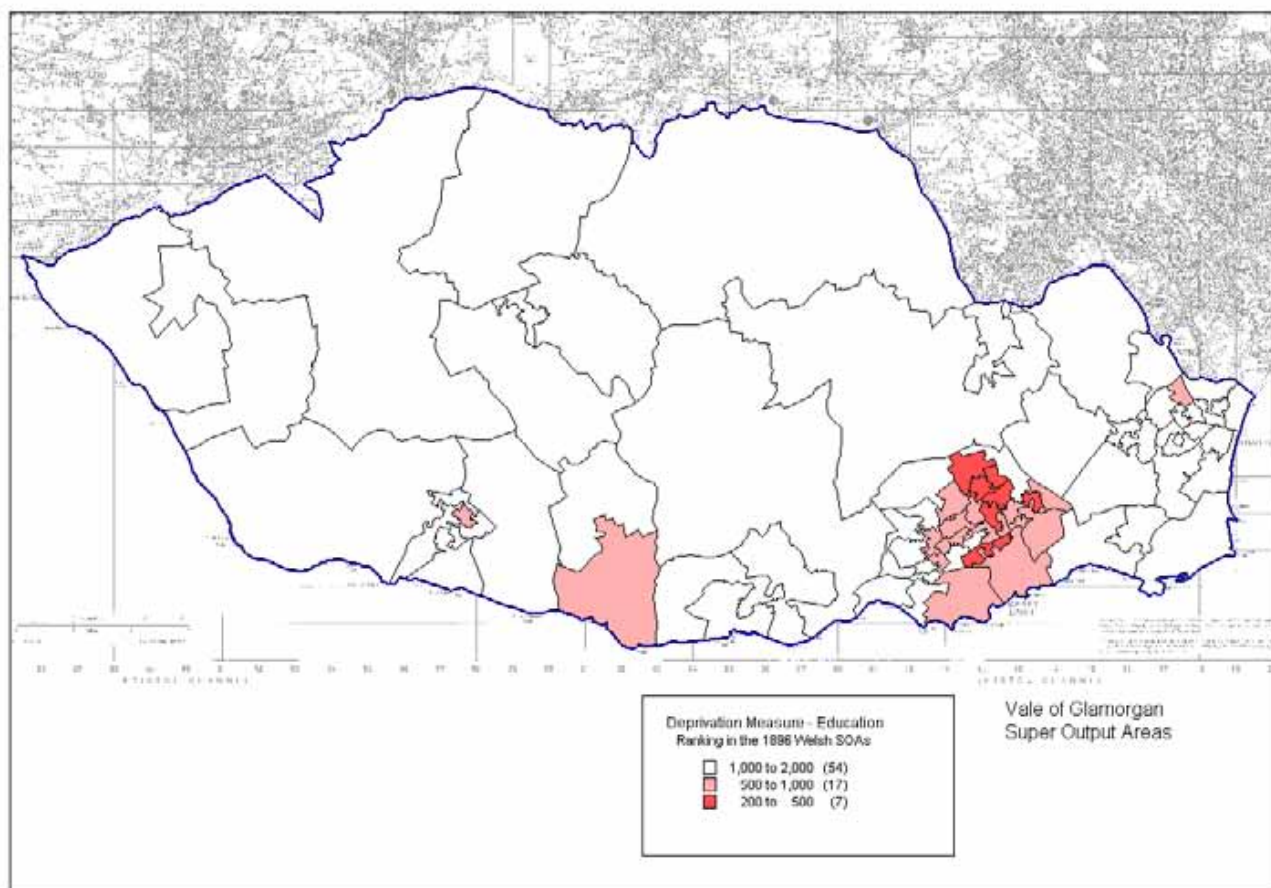
Welsh Index of Deprivation Overall



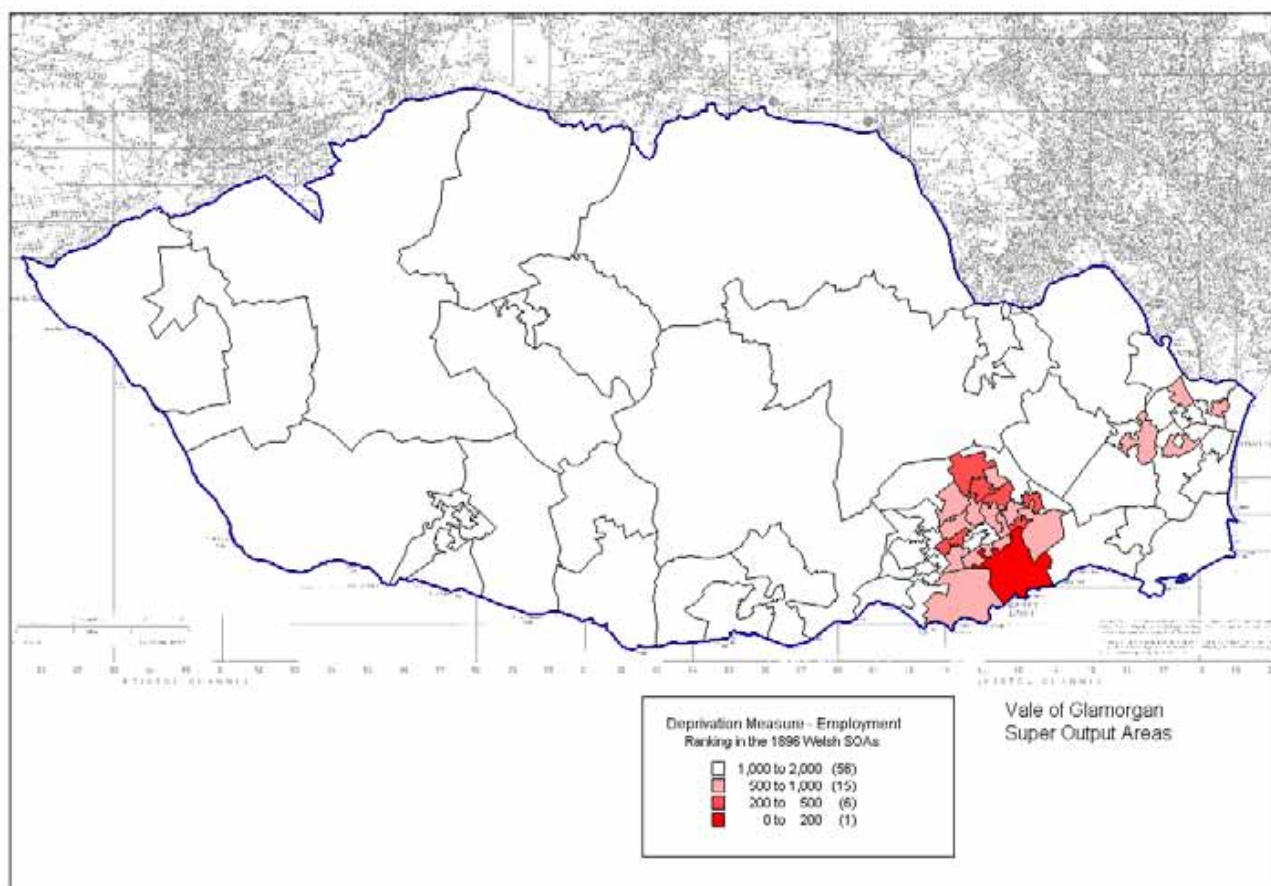
Welsh Index of Deprivation - Income



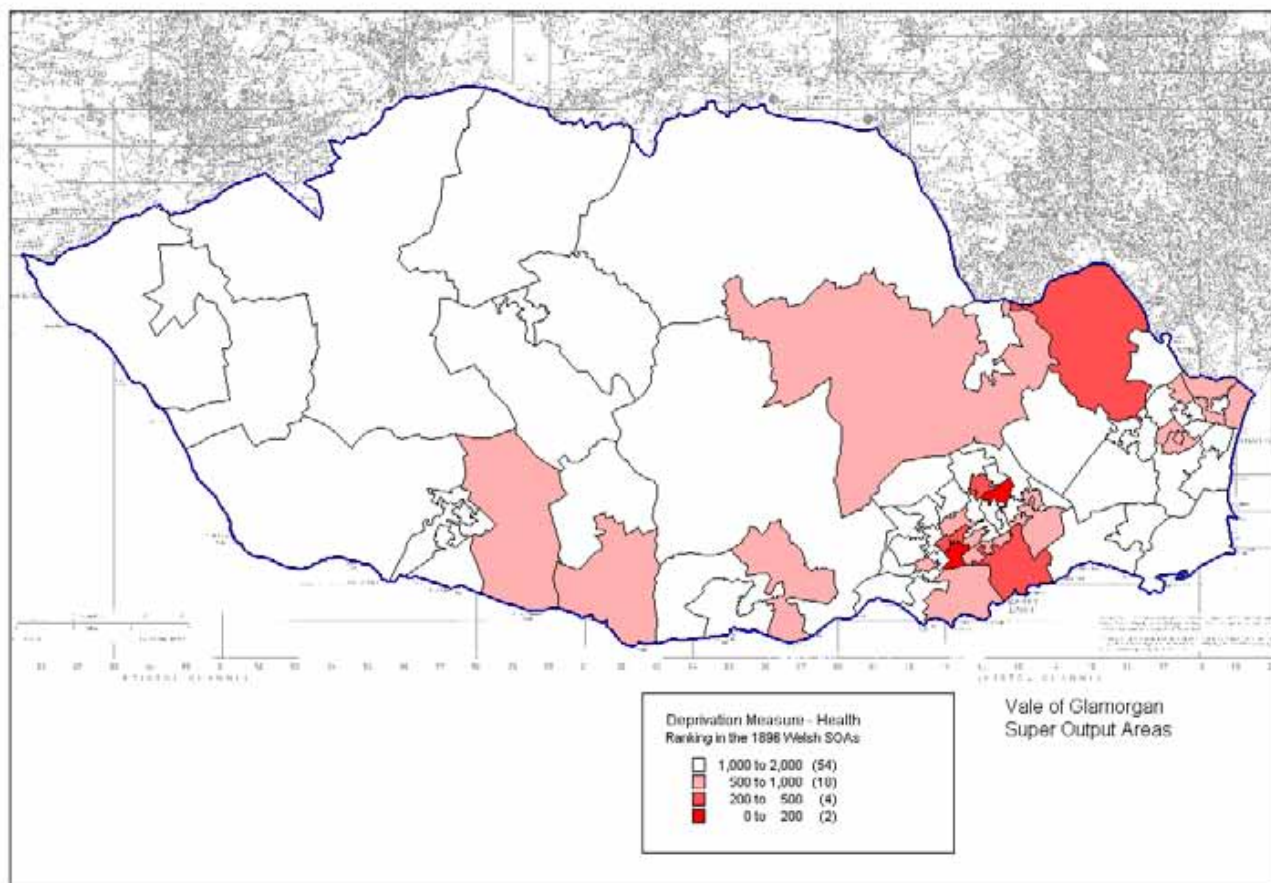
Welsh Index of deprivation – Education



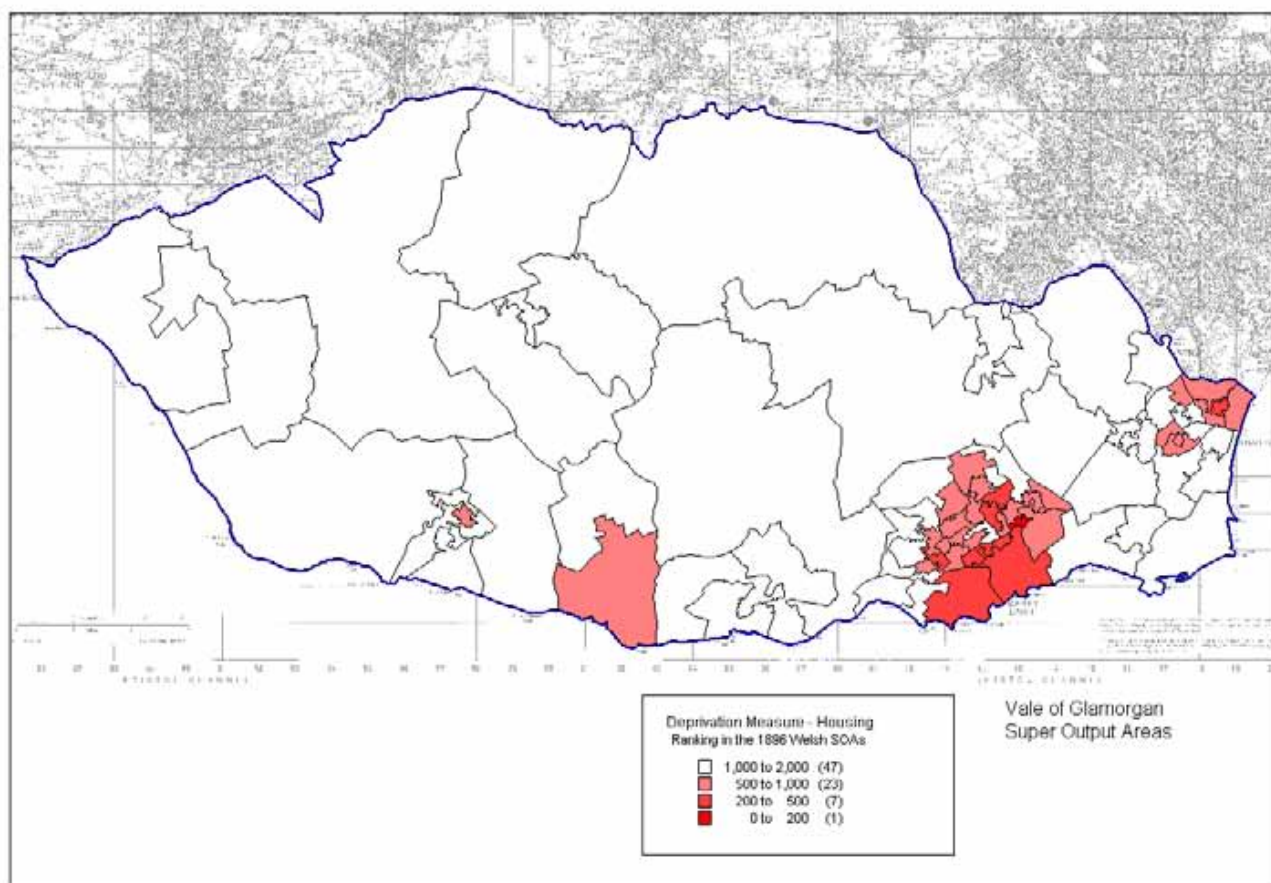
Welsh Index of Deprivation – Employment



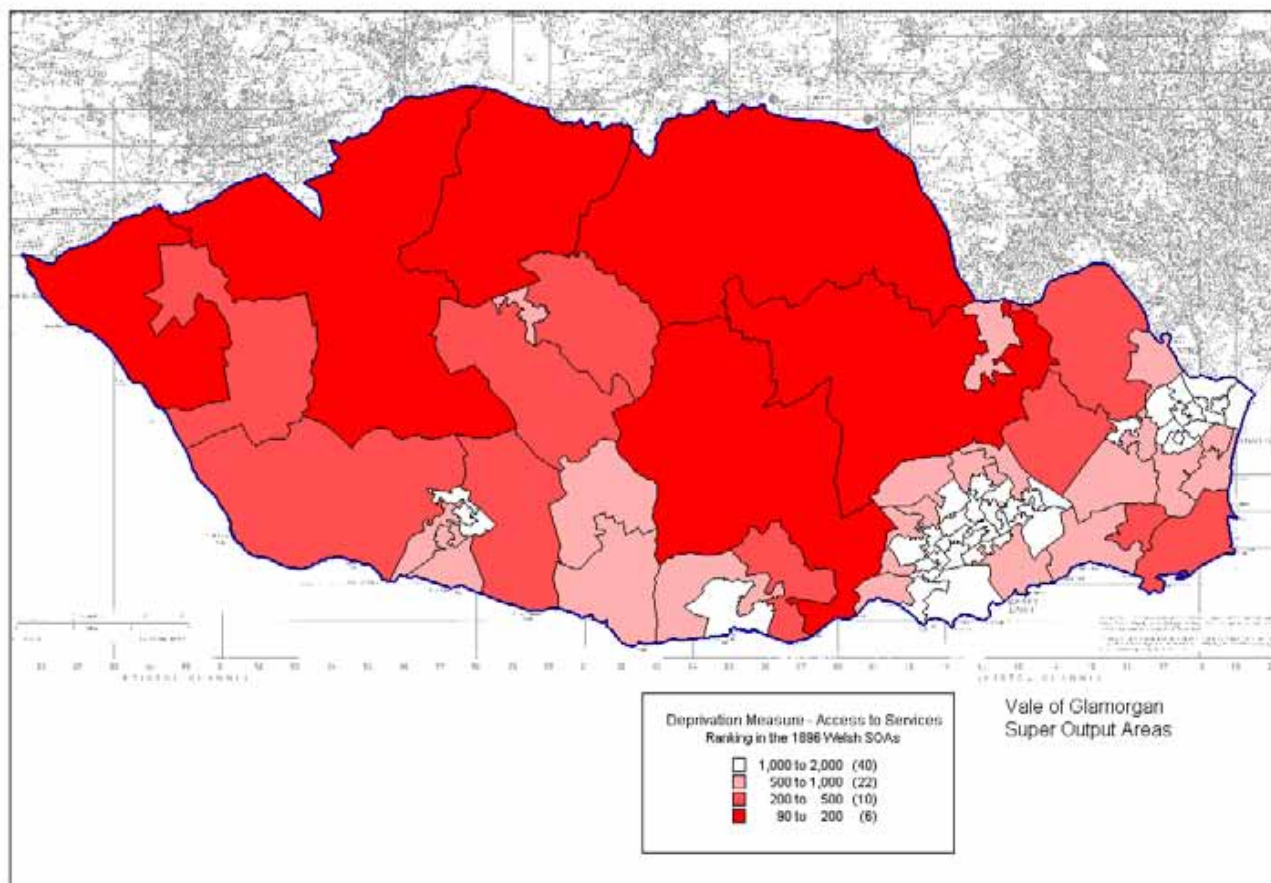
Welsh Index of Deprivation - Health



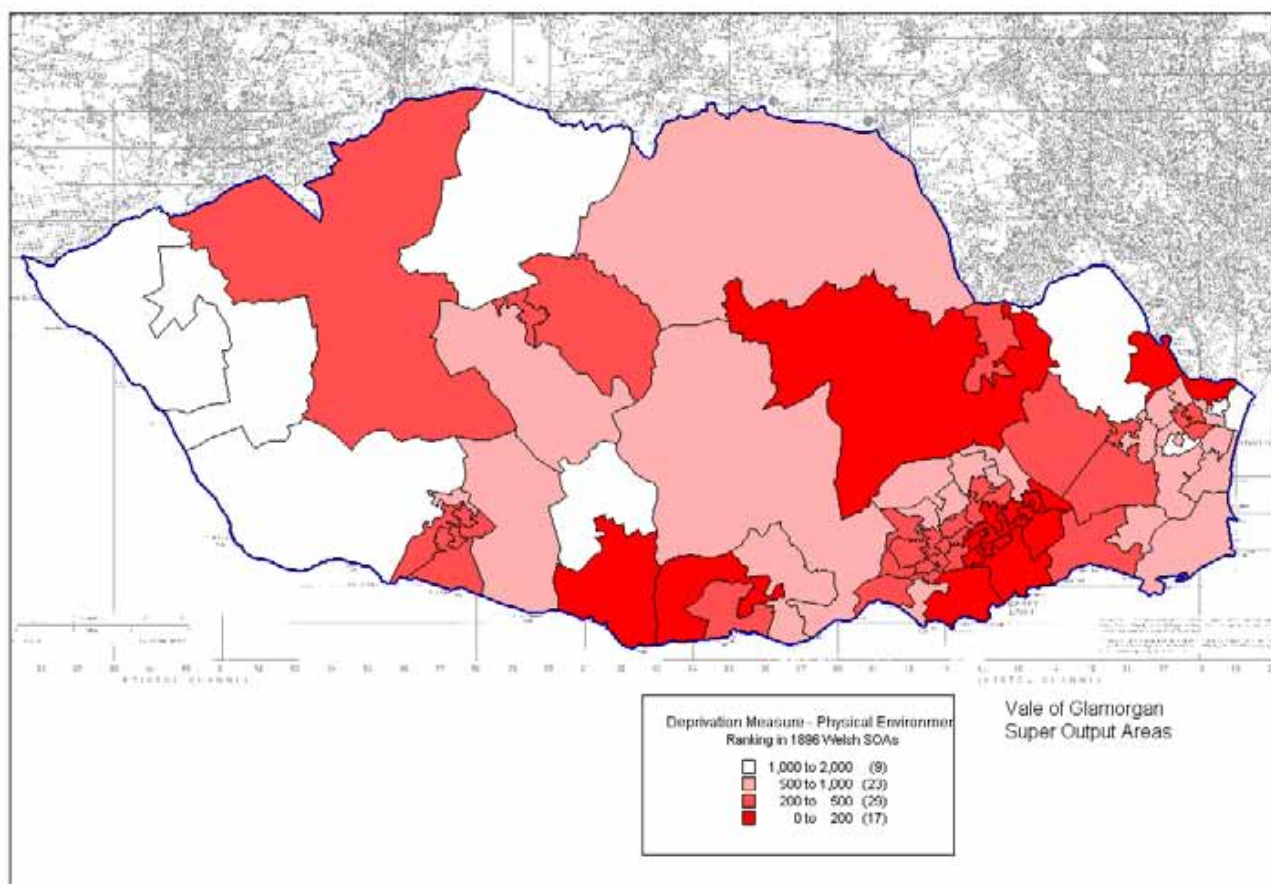
Welsh Index of Deprivation – Housing



Welsh Index of Deprivation – Access to Services



Welsh Index of Deprivation



Appendix 4

Vale of Glamorgan**Super Output Areas****2000 Welsh Index of Deprivation Rankings**

SOAName	Employment						Physical	Services
	Overall	Income	Health	Education	Housing	Environment	Access	
Baruc 1	1656	1342	1386	1198	1674	1453	775	1268
Baruc 2	1808	1868	1862	1846	1581	1809	392	761
Baruc 3	600	469	688	864	836	321	78	1073
Baruc 4	1518	1391	1275	1157	1654	1023	235	1301
Buttrills 1	988	946	1176	637	1030	566	81	1667
Buttrills 2	334	246	265	404	668	854	205	1667
Buttrills 3	1167	842	1411	1210	824	1227	101	1667
Buttrills 4	579	575	820	106	1021	936	208	1667
Cadoc 1	424	306	451	803	480	699	56	1325
Cadoc 2	1045	985	1263	1194	715	760	48	1304
Cadoc 3	755	623	874	1189	653	561	76	1418
Cadoc 4	455	376	490	750	704	189	45	1667
Cadoc 5	707	781	929	580	673	885	11	1667
Cadoc 6	1676	1561	1474	1596	1381	1758	584	777
Castleland 1	92	128	65	272	618	335	34	504
Castleland 2	504	401	650	840	395	346	75	1667
Cornerswell 1	1639	1291	1250	1595	1653	1016	425	1667
Cornerswell 2	954	943	927	511	925	559	525	1667
Cornerswell 3	1244	896	1079	1006	1271	1248	764	1194
Cornerswell 4	1699	1382	1322	1597	1619	1379	499	1667
Court 1	610	397	546	1572	502	737	130	1667
Court 2	564	414	753	1004	412	329	154	1282
Court 3	149	123	316	98	332	277	454	1193
Cowbridge 1	1664	1421	1543	1620	1882	1690	227	794
Cowbridge 2	1714	1768	1815	1827	1880	1745	590	234
Cowbridge 3	1697	1773	1741	1669	1844	1797	345	347
Cowbridge 4	1671	1879	1805	1265	1877	1832	1349	146
Dinas Powys 1	1733	1770	1844	1693	1818	1684	325	441
Dinas Powys 2	1829	1709	1693	1724	1807	1449	495	1389
Dinas Powys 3	1003	473	934	1467	1122	1534	813	980
Dinas Powys 4	1689	1625	1692	1709	1722	1410	265	577
Dinas Powys 5	1293	1608	1820	216	1602	1826	1198	381
Dyfan 1	1715	1665	1506	1599	1486	1676	902	656
Dyfan 2	855	513	843	1472	765	758	552	1158
Dyfan 3	627	470	551	860	660	908	340	1343
Gibbonsdown 1	480	164	659	1174	471	1097	739	928
Gibbonsdown 2	205	82	335	493	310	863	423	1036
Gibbonsdown 3	949	678	986	1433	718	795	302	1074
Gibbonsdown 4	332	109	452	1100	357	539	812	966
Illtyd 1	1730	1817	1651	1238	1772	1896	389	771
Illtyd 2	1098	539	1209	1800	833	860	346	1667
Illtyd 3	1820	1757	1792	1887	1793	1777	298	1069
Illtyd 4	1053	829	1008	1260	994	236	307	1667
Illtyd 5	1037	659	1287	651	1470	752	228	1407
Illtyd 6	1827	1825	1865	1866	1569	1747	534	880
Llandough	1667	1659	1504	1826	1731	1343	109	849
Llandow/Ewenny	1534	1684	1701	1640	1837	1734	263	143
Llantwit Major 1	1815	1805	1821	1673	1711	1889	270	1184

Llantwit Major 2	1675	1478	1441	1710	1444	1873	382	942
Llantwit Major 3	1562	1639	1659	980	1478	1426	858	393
Llantwit Major 4	1355	1335	1307	1038	1227	1619	212	826
Llantwit Major 5	1669	1735	1874	1143	1687	1532	1156	269
Llantwit Major 6	910	647	1050	1017	658	753	496	1225
Llantwit Major 7	1881	1778	1873	1766	1832	1701	934	1262
Peterston-super-Ely	1539	1802	1631	1250	1803	1564	801	131
Plymouth (The Vale	1844	1881	1794	1780	1893	1886	541	867
Plymouth (The Vale	1489	1045	1175	1796	1730	1406	734	641
Plymouth (The Vale	1680	1480	1675	1018	1896	1228	630	915
Rhoose 1	1607	1456	1221	1329	1373	1531	355	1667
Rhoose 2	1002	787	1012	739	1493	1103	996	434
Rhoose 3	1585	1722	1676	1883	1869	1565	572	109
Rhoose 4	1735	1732	1754	1722	1859	1739	155	711
St. Athan 1	872	1022	1211	848	754	611	90	576
St. Athan 2	1604	1302	1708	1386	1185	1659	1289	559
St. Augustine's 1	1473	1129	1090	888	1808	609	1425	1667
St. Augustine's 2	1420	988	952	1299	1812	486	1125	1667
St. Augustine's 3	1373	1158	1122	804	1622	733	580	1667
St. Augustine's 4	1380	1392	1266	867	1788	743	145	1189
St. Bride's Major 1	1528	1793	1542	1179	1840	1870	1683	91
St. Bride's Major 2	1647	1615	1613	1681	1780	1741	1039	203
Stanwell 1	1041	863	1026	815	1016	579	781	1041
Stanwell 2	1784	1725	1629	1254	1871	1282	402	1667
Stanwell 3	575	188	560	993	1177	767	1057	1081
Sully 1	1755	1756	1722	1689	1781	1582	866	455
Sully 2	1741	1795	1597	1741	1842	1814	234	719
Sully 3	1465	1433	1235	1092	1830	1272	651	474
Wenvoe 1	1254	1678	1704	691	1538	1412	190	186
Wenvoe 2	1681	1582	1503	1862	1434	1646	430	676

Appendix 5 Deprivation Measures Definitions

Welsh Index of Multiple Deprivation 2005 – Agreed Domains and Indicators

Income Deprivation Domain

Claimants, partners and children of Income Support claimants – August 2004 (Department for Work and Pensions)

Claimants, partners and children of income based Jobseekers Allowance claimants – August 2004 (Department for Work and Pensions)

Claimants, partners and children of Working Families Tax Credits claimants August 2002 (Department for Work and Pensions/HM Revenue and Customs (formerly the Inland Revenue))

Claimants, partners and children of Disabled Persons Tax Credits claimants August 2002 (Department for Work and Pensions/HM Revenue and Customs (formerly the Inland Revenue))

Employment Deprivation Domain

Claimants of Incapacity Benefit - women aged under 60 and men aged under 65 – April 2004 (Department for Work and Pensions)

Claimants of Severe Disablement Allowance - women aged under 60 and men aged under 65 – April 2004 (Department for Work and Pensions)

Participants on Options for New Deal for Young People and Intensive Activity Period for New Deal 25 plus – June 2004 (Department for Work and Pensions)

Housing Deprivation Domain

Households lacking central heating (2001 Census)

Household overcrowding, excluding all student households (2001 Census)

Health Deprivation Domain

Standardised Limiting Long-Term Illness (2001 Census)

Standardised mortality ratio for all causes of death for all ages years 1999-2003 (National Public Health Service for Wales)

Cancer standardised Incidence ratio 1994 - 2004 (Welsh Cancer Intelligence and Surveillance Unit)

Physical Environment Deprivation Domain

Air quality 2005 (Environment Agency Wales)

Air emissions 2005 (Environment Agency Wales)

Proportion of population living within 1 km of a waste disposal site 2005 (Environment Agency Wales)

Proportion of population living within 1 km of a significant industrial source 2005 (Environment Agency Wales)

Proportion of population living in an area with a significant risk of flooding 2005 (Environment Agency Wales)

Education, Skills and Training Deprivation Domain

Average point score at Key Stage 2 – 2004 (National Curriculum Assessments, Welsh Assembly Government)

Average point score at Key Stage 3 – 2004 (National Curriculum Assessments, Welsh Assembly Government)

Average point score at Key Stage 4 – 2004 (Welsh Examination Database, Welsh Assembly Government)

Proportion of adults with low or no qualifications - (2001 Census)

Proportion of 17&18 years olds not entering further or higher education 2004 (HM Revenue and Customs)

Secondary school absence rates – 2004 (Pupil Attendance Database, Welsh Assembly Government)

Geographic Access to Services by Bus and Walking Deprivation Domain

Proportion of population within 10 minutes of a food shop by walking and bus 2005 (Local Government Data Unit - Wales);

Proportion of population within 15 minutes of a GP surgery by walking and bus 2005 (Local Government Data Unit - Wales);

Proportion of population within 15 minutes of a primary school by walking and bus 2005 (Local Government Data Unit - Wales);

Proportion of population within 30 minutes of a secondary school by walking and bus 2005 (Local Government Data Unit - Wales);

Proportion of population within 30 minutes of a NHS dentist by walking and bus 2005 (Local Government Data Unit - Wales);

Proportion of population within 15 minutes of a Post Office by walking and bus 2005 (Local Government Data Unit - Wales);

Proportion of population within 15 minutes of a public library by walking and bus 2005 (Local Government Data Unit - Wales);

Proportion of population within 20 minutes of a leisure centre or swimming pool by walking and bus 2005 (Local Government Data Unit - Wales);