



'Wonderful' women rewarded

Overall winner at the inaugural Vale Woman of the Year awards, which highlighted some wonderful stories of the activities of local women, was council senior enforcement officer Denny White. See page 3



www.valeofglamorgan.gov.uk

Vale Waves



The Vale of Glamorgan Council's Community Newspaper

Summer 2008 | Issue 20

Take pride in your local park

Love your local park and look after it – that's the message from the council's parks and grounds maintenance team this summer.

This month's Loveparks



week was a perfect reminder to everyone to make the most of their local park and enjoy the benefits that fresh air and exercise can bring.

Whether you walk your dog in them, go for a jog, relax with friends, play sports, read your book in a peaceful setting, take your kids to play, or just enjoy a stroll in them during your lunch break – appreciate and take pride in your local parks and look after them for future generations.

Phil Beaman, operational manager (parks and grounds maintenance), said: "All too often we hear that people aren't healthy enough, yet we have beautiful parks that are free of charge to enjoy and can be used for such a wide



One of the Vale's many beautiful parks – Alexandra Gardens in Penarth.

variety of activities. Parks are there for everyone, from toddlers to the elderly, and are one of the best places you can be on a fine summer's day. Make the most of them, but please use them responsibly and help to keep them clean by picking up your litter and dog mess at all times."

The parks and grounds maintenance team consists of

46 full-time frontline staff and more than 20 extra temporary staff during the summer months.

The staff have diverse roles looking after the local environment. Thanks to a real team effort, their variety of tasks range from looking after parks, of course, to recreation grounds, skate parks, lakes, rivers and much much more.

Vale in the top 10 for quality of life

According to a new quality of life survey, the Vale of Glamorgan is one of the top 10 best places to live in the UK.

Halifax Estate Agents carried out the survey, which scored counties across the UK according to factors such as employment, earnings,

housing quality, weather, crime, education and health.

The survey found that the Vale has the best quality of life outside the south of England. In the Vale houses are relatively large, and the county has an above average owner-occupancy rate, life expectancy is high and our

school pupils' GCSE results are among the best in the country.

Other Welsh counties in the top 50 were Monmouthshire (28), Flintshire (39) and Powys (40).

The top UK counties for quality of life were:

1. Buckinghamshire
2. Surrey
3. Berkshire
4. Bromley
5. Hertfordshire
6. Oxfordshire
7. Suffolk
8. Vale of Glamorgan
9. Richmond upon Thames
10. Sutton.

NewsStories



Vale-based author Phil Carradice was the guest at the Vale Writers' Squad's spring session at the Cory Education Centre at Dyffryn Gardens. See page 2.



Find out what's on in the Vale this summer
See page 5



Questionnaire

We would like to know how many residents are recycling and how they are going about it. Please complete the short questionnaire on page 7 and return by Freepost by 14 July or save an envelope and complete online at www.valeofglamorgan.gov.uk

Please ensure you recycle your copy of Vale Waves



News in brief

Bethan's best

Seven-year-old Bethan Lowrie has scooped the top prize in a council promoted design a logo competition.



The competition challenged local schoolchildren to design a logo for Prosiect Gwyrdd – a project through which five local councils, including the Vale, are looking for the best joint solution for dealing with non-recyclable waste.

Bethan's winning design won her an iPod and £100 worth of vouchers for her primary school – Wick and Marcross Church in Wales.

Wick and Marcross headteacher Ceri Thomas said: "It's a fantastic achievement for Bethan and we're thrilled to receive vouchers that'll help us do even more great green work in the school."

Directory for youngsters



A special directory providing young people in the Vale with information about available activities has been updated and improved.

Launched nearly a year ago, the 'Activale Youth Directory' now contains information on more than 320 organisations providing services and activities for young people aged 11 to 25 years.

Copies of the directory are available through schools and libraries and CDRom versions are available on request from the council's Children and Young People's Information Service (CYPIS). It can also be accessed online through www.activale.co.uk and more than 5,000 'visits' have already been recorded.

Further information on the directory can be obtained through the CYPIS at the Dock Offices, Subway Road, Barry CF63 4RT. Telephone 01446 704704

Officers have head start

Troublemakers are being met head on in a new initiative organised by the Safer Vale Partnership.

Police and council licensing and trading standards officers are being equipped with lightweight cameras that can be strapped to officers' heads and feed images to digital recorders on their belts.

A deterrent for anti social behaviour, eight of the hi-tech gadgets are being trialled and, if the initiative proves successful, more officers will eventually have the equipment.

The portable systems can store hundreds of hours of material and provide instant playback on a small screen. The

cameras are particularly useful for filming disturbances and are being used in anti-social behaviour hotspots across the Vale. Footage can be used as evidence in court.

Inspector Jim Hall said: "We have been using these cameras on a daily basis and they have proved very effective. Previously, when officers have visited parents to inform them their children have been involved in anti social behaviour; many parents found it hard to believe their children are capable of such behaviour. Now, with the new technology available to us we are able to play back the footage so they can see for themselves what their children have been doing."



Police and council officers are trialling new lightweight head cameras

They're a real treasure

Talented young writers in Vale schools are continuing to develop their skills with the help of real life authors.

Formed in 2003, the Vale Young Writers' Squad currently has 38 members from 19 Vale schools, and council curriculum development adviser (literacy) Jane McCarthy said: "The council initiative is providing a focus for the children to get together, encourage each other and develop their natural writing skills.

"The youngsters are meeting a range of writers and authors who offer a helping

hand to develop their talents, and provide writing tips and advice for future work."

Prior to a spring session at the Cory Education Centre at Dyffryn Gardens with Vale-based author Phil Carradice, children were provided with a copy of his novel, 'Black Bart's Treasure,' which is an action-packed pirate story set in the Bristol Channel. During the day, children discussed the novel with Phil and wrote pirate stories of their own.

During the afternoon, parents, carers and teachers were invited to hear the children sharing their work.



Vale of Glamorgan-based author Phil Carradice at the Vale Writers' Squad's spring session at the Cory Education Centre at Dyffryn Gardens.



The buzz of a bumblebee is one of the first signs of spring and one that lasts throughout the lazy summer. But don't be misled by their name: bumbling bees really are busy – beating their wings up to 200 times a minute in their never-ending search for nectar and pollen.

Bees are really important to us – pollinating crops and flowers. It's been estimated that about a third of the food we eat relies on bee pollination at some point in its production.

But our bumblebees are under threat!

Changes in land use have made it harder for bumblebees to find the flowers they need. There are twenty-two bumblebee

species in the UK but you're likely to see only six of them – known as the 'BIG 6.' These species are the ones that have adapted to using our gardens the best.

Bumblebees can be told apart by looking at what colour their stripes are – basically there are three groups – white tailed, red tailed and brown!

For a great guide visit www.bumblebeeconservationtrust.co.uk.

What can you do?

- Grow more native wildflowers or varieties that are closely related to wild ones, such as brilliant, towering foxgloves, nectar-rich honeysuckle, purple scabious or pink knapweed.
- Provide them with somewhere to nest – areas of

rough, long grass or an old carpet tile in a quiet corner.

- Get involved in a survey to help ecologists find out where different bumblebees live – visit the Bumblebee Conservation Trust's website or contact us to find out more.

Many local authorities also manage some highway verges for their wildflowers – if you know of any really good wildflower verges or have any other queries, please contact the council ecology team at ecology@valeofglamorgan.gov.uk or 01446 704855.

- Back to Nature banner – photos courtesy of Paul Roberts
- Bumblebees - photos courtesy of Brian Valentine (www.flickr.com/photos/lordv/)



Early Bumblebee



Buff-tailed bumblebee



So much to celebrate

Women from all sectors of the Vale community were honoured at an inaugural awards event.

The Vale Woman of the Year Awards were organised through the council with the support and sponsorship of a number of organisations from the private and voluntary sectors.

The awards celebrated International Women's Day and the event was organised by Edwina Vaughan and staff of the Barry Community Enterprise Centre. The host was BBC Wales presenter Jason Mohammad.

Overall winner was Denny White who works for the council and has responsibility for dealing with people who commit environmental crimes such as fly tipping, graffiti and abandoned vehicles. Denny said: "I was honoured to receive

the award on behalf of everyone in the council's Visible Services division and the Youth Offending Team. Winning the first Vale Woman of the Year will assist in highlighting the ground-breaking work we are carrying out in the Vale and ensure the Visible Crew team goes from strength to strength."

Category winners were: Carer, Ann Daniel; learner, Christine Prangley; businesswoman, Sian Fox; public servant, Denny White; woman returner, Roya Rashidi; community, Audrey Porter; sports volunteer, Gwynedd Lingard, and young achiever, Rachael Jeffery.

Representing the awards steering group, Edwina Vaughan said: "This really exciting event has highlighted some wonderful stories of the activities of women in the Vale."



Denny White

Christine says 'go for it'

Learner of the year Christine Prangley is keen to encourage other adults to study.

Christine, who left school at 16 with two O levels and three GCSEs, is currently studying for a social work degree in Cardiff. She had various jobs before and after raising a family, and embarked on her adult learning 'career' by gaining two further GCSEs in mathematics and business studies.

In 1995, after Christine took a job as a support worker with adults with learning disabilities, the learning bug really took hold. Two NVQs in care were followed by a counselling skills course at the Barry Community Enterprise Centre and a psychotherapy counselling diploma after five years of study at Coleg Glan Hafren, Cardiff.

During the diploma course, Chris decided "not to take things easy" and to embark on her current social work degree course (until June 2009).

As part of the degree course, Christine has undertaken a European Computer Driving Licence course, and she says: "I would recommend the fast track course at the Palmerston (Barry) centre to anyone. The tutor was so helpful and made computers come alive for me in a way I never expected. I am no longer fright-



ened of computers and actually know what I think I'm doing."

Describing herself as "not really an academic person," grandmother of four Christine says: "If you'd like to do a course and are not sure you can do it, I say, 'Go for it!' You never know where it will lead and, if it doesn't lead anywhere, you will have enjoyed doing it. And that's all that counts."

Praising the support of her family, friends and extremely patient tutors, Christine adds: "If I can do it, anybody can. I have gained a great deal of confidence as well as academic and valuable life skills."

Some handy hints

Pupils at Vale primary schools have been reminded about the importance of hygiene as part of a series of hand-washing fun days.

Organised by council environmental health officers, the events allow pupils to take part in an interactive hand washing exercise. Environmental health officer Leah Harris explained: "Using a UV hand inspection cabinet, the children are able to see how well they wash their hands and identify the areas frequently missed during hand washing."

Following a visit to Evenlode Primary School, Penarth, headteacher Alun Jenkins said: "Health and hygiene are so important in every school. Simple things like washing hands properly after going to the toilet, and before eating a snack or a meal, are essential everyday habits."

"The children were fascinated with how the light box showed up germs."



Pupils who took part in the hand washing fun day at Evenlode Primary School, Penarth, are pictured with environmental health officers Fauzia Malik-Stephens (left) and Leah Harris.

Newsinbrief

New mayor

St Bride's Major ward councillor Audrey Preston has been elected Vale of Glamorgan Mayor for 2008-09, with Cllr Emlyn Williams, who represents Barry's Illtyd ward, as her deputy.

The council's new cabinet, with portfolios, comprises: Leader Cllr Gordon Kemp (finance, ICT and property), deputy leader Cllr Hunter Jarvie (legal and public protection), and Cllrs Anthony Ernest (tourism and leisure), Jeffrey James (planning and transportation), Tony Hampton (education and lifelong learning), Janice Charles (human resources and equalities), Dorothy Turner (social and care services), Paul Church (housing and community safety), Geoff Cox (visible and building services) and Rhodri Traherne (economic development and regeneration).

Details of all councillors elected on 1 May can now be viewed on the council website www.valeofglamorgan.gov.uk.

Meetings

All members of the public are invited to attend meetings of the Council which start at 6pm in the Civic Offices unless otherwise stated:

- Cabinet (2pm) – 25 June, 9 and 23 July and 3 September.
- Council – 26 June.
- Planning – 3 and 31 July and 4 September.
- Voluntary Sector Joint Liaison – 16 July.
- Community Liaison (7pm) – 23 July.
- Licensing (10am) – 1 July and 2 September.

Scrutiny meetings start at 6pm and are generally held at the Civic Offices:

- Lifelong Learning – 7 and 28 July and 8 September.
- Corporate Resources – 8 and 29 July and 9 September.
- Social care and health – 1 and 21 July and 1 September.
- Economy and Environment – 2 and 22 July and 2 September.
- Housing and Public Protection – 30 June, 24 July and 3 September.



Newsinbrief

New base

Staff in council adult services have been brought together in one base in Barry.

Over 80 staff from the learning disabilities team, older persons' service, and physical and sensory impairment and occupational therapy teams have moved into refurbished offices at Canolfan Ty Jenner, opposite Jenner Park Stadium.

Thanks to capital funding from the council, Canolfan Ty Jenner has been transformed from its previous use as a respite hostel for children with special needs into a modern facility, providing office accommodation and a specialist assessment unit.

Delighted with the move, Anne Lintern, Operational Manager – Community Care and Health, said: "Bringing staff together into one building has made a massive positive impact, making it much easier for colleagues to share information and ideas."

Press photographers

Are you an experienced press photographer?

The council's communications unit is looking for photographers to add to its suppliers list. You must have experience of taking press photographs, be creative, with a good portfolio of successfully published work. We are looking for someone who is reliable, with good people skills, familiar with directing photos of groups of people, including VIPs. Preferably you will have been on the staff of a newspaper and have good contacts with the main Welsh newspapers.

If you fit the bill, please email the council's communications manager, Alison Cummins - acummins@valeofglamorgan.gov.uk

Council tenants help set the standard

Investing heavily in its properties to bring them up to the Welsh Housing Quality Standard (WHQS) by 2014/15, the council is working closely with tenants to ensure a housing service tailored to meet their needs.

A new tenant engagement team (TET) is raising awareness of housing issues and encouraging tenants to stand up and have their say. And, over the last few months, many tenants have contacted the housing service for the first time, eager to get involved.

A new tenants' association has been set up at the Fair Oaks sheltered housing complex in Dinas Powys, bringing the total number of groups in the Vale to three. It is hoped that more groups will be set up in the near future.

Delivered to all council ten-

ants, a new newsletter is full of news about the investment programme and what tenants can expect from the WHQS. It also includes articles on neighbourhood events and essential information about safety in the home. There is a competition to name the newsletter, which is expected to go out to all tenants four times a year.

The TET is also in the process of setting up a tenant panel to help the council make decisions about housing issues. This will consist of a group of tenants who will meet regularly with the cabinet member for housing to ensure they have a direct influence on decision-making about their homes. Tenants will be asked for their views on changes to the responsive repairs service, the future programme of works to bring council properties up to the WHQS and many more

Committed to meeting the WHQS targets for its housing stock, the council is currently formulating a 30-year business plan. And, in the short-term, has commenced work on a two-year £10.8m investment programme.

The 2007/08 programme has predominantly focused on replacement windows and doors, roof renewals, central heating and electrical upgrades.

Some properties already meet many aspects of the standard and different homes will require different improvements.

To date, over 85 per cent of homes have received insulation



and further reductions in heating fuel consumption should now be achieved.

The new Permanite flat roofing systems installed on the Gibbonsdown and Shakespeare estates in Barry are the very latest in waterproofing technology.

With the cost of electricity and gas rising, the benefits of the new roofing insulation system can help reduce heat loss by approximately 40 per cent.

New heating and hot water systems are now specified with a boiler up to 33 per cent more efficient than some of the old back boiler systems.

Ruth Leask (pictured), of Owain Court, St Athan, is looking forward to the advantages of a more efficient heating and hot water system.

Margaret Wilson, of Redlands Avenue, Penarth, is delighted with her new windows that have resulted in a much warmer and quieter home. The programme for providing double glazing uPVC windows and doors can cut heat loss and noticeably trim monthly utility bills.



A new tenant engagement team (TET) is raising awareness of housing issues and encouraging tenants to stand up and have their say.

important housing issues.

Council tenants can also get involved in a number of other ways from filling in questionnaires about their housing needs to attending public meetings about developments to the housing service.

If you are a council tenant and would like to know more about starting a tenants' association, joining the tenant panel or getting involved in your housing service in any other way, please contact the TET Team on 01446 709895.



What will it take for you to switch to public transport?

Scenes like above are becoming too familiar. Journey times are getting longer and parking facilities can be expensive or even non-existent! Vehicles on these heavily congested roads are producing high carbon dioxide emissions which contributes to climate change. You can help reduce these emissions by switching to public transport.

In many cases, travelling into Cardiff by rail is quicker than road. The number of people opting to take the bus or train in South Wales is growing all the time. Why not join them and help save the environment as well as save your money.

* Calls cost 10p a minute from a BT landline. Your text message will be charged at your standard rate the reply will be free.

Sewta – the sustainable and integrated transport people - are working with local bus and rail companies and Traveline Cymru to get you on board the green revolution and help save the planet!

To find more information on your local public transport service call 0871 200 2233 or text your nearest bus stop's code to 84268.

Alternatively go to:
www.traveline-cymru.org.uk
or
www.nationalrail.co.uk
Tel: 08457 48 49 50

Sewta
Moving People Yn Symud Pobl



What's On in the Vale this Summer

June

Mon 16 to Sun 29 – Midsummer Festival of Music and Theatre, Dyffryn Gardens

The festival of music and theatre returns to Dyffryn's open-air theatre garden, and includes performances of 'Madam Butterfly,' 'Pirates of Penzance' and 'Pinocchio.' For details, call 02920 593328 or visit www.midsummer-festival.co.uk

Fri 20 – Thank You For The Music, Barry Memorial Hall and Theatre

Prepare for a sequin-studded, white-suited, platform-booted spectacular evening which revives the glittering careers of ABBA and the Bee Gees. Tickets cost £12.75 and the show starts at 7.30pm. Call the box office on 01446 738622.

Sat 21 – National Gardens Scheme, throughout the Vale

As part of the National Gardens Scheme, a number of beautiful local gardens are open to the public to enjoy for charity. Between 11am and 4pm, 77 Coleridge Avenue in Penarth can be visited, while the following Penmark Village Gardens are open from 11am to 5pm – The Byre, Elderberry House, Gileston House, Glen View, Gwal Eirth, Penmark Place and Sefton Bungalow. For further information about the National Gardens Scheme, visit www.ngs.org.uk

Sun 29 – Plants Fair, Dyffryn Gardens

On the final day of the midsummer festival at Dyffryn, the gardens are staging a plants fair, where you will be able to purchase a collection of rare and unusual plants. The fair will take place before the pay point near the main car park.

Sun 29 – National Gardens Scheme, throughout the Vale

As part of the National Gardens Scheme, a number of the finest local gardens are open to the public to enjoy for charity. Between

11am and 4pm, the gardens at the following locations can be viewed – St Bride's C/W Primary School, St Donats Castle and Slade in Southerndown.

July

Thurs 3 to Sun 13 – Penarth Summer Festival

Shiver me timbers – the theme of this year's festival is 'Pirates of Penarth!' A variety of events will provide entertainment for the whole family, with a fun day at The Esplanade on Saturday, 12 July. For more details, telephone 029 2070 0721 or visit the festival website www.penarthsummerfestival.com

Sun 13 – National Gardens Scheme, throughout the Vale

As part of the National Gardens Scheme, the garden at 36 Brookfield Avenue in Barry, with its water features and raised terrace, will be open to the public to enjoy for charity from 2 to 6pm.

Tues 15 – Cafe Concert with Rory Russell, St Donats Arts Centre

A matinee concert in the relaxed music café atmosphere of the Classroom. A graduate from the Royal Northern College of Music in 2007, Rory has established himself as a leading young classical guitarist and chamber musician. The performance starts at 3pm while tickets cost £4 and include tea and cake. Call 01446 799100 or visit www.stdonats.com

Mon 28 and Mon 18 August – Circus Workshops, Dyffryn Gardens

Why not try your hand at plate spinning, juggling, unicycling and much more under the expert guidance of specialist tutors from NoFit State Circus. The workshops run from 2 to 4pm and cost £6 for children and £8 for adults. Children under 12 must be accompanied by an adult, and the workshops are suitable for children aged eight upwards. Please call 02920 593328 to book in advance

as spaces will be limited.

Wed 30 to Sat 2 August – Thoroughly Modern Millie, Barry Memorial Hall and Theatre

A high-spirited musical romp set in 1922 New York. Thoroughly Modern Millie is a story of two girls, two men and two dreams – but who ends up with whom? Tickets, costing from £7 to £9, are only available from the booking line on 01446 401822, and are not on sale from the Memorial Hall and Theatre Box Office.

August

Sun 3 – National Gardens Scheme, throughout the Vale

As part of the National Gardens Scheme, the following gardens in Barry will be open to the public to enjoy for charity from 2 to 6pm – 11 Arno Road, 47 Aneurin Road and 1 North Walk.

Sat 16 and Sun 17 – Family Fun Weekend, Dyffryn Gardens

From 10am to 6pm there will be a wide range of activities for the whole family to enjoy. Call 02920 593328 or visit www.dyffryngardens.org.uk for details.

Wed 20 – The Vale of Glamorgan Agricultural Show, Fomon Castle Park

A great family day out from 8.30am to 6pm. The show will include a Rockwood dog display, food hall, horticultural show, home produce marquee, laser clay shooting and over 200 trade stands. Tickets from £8 adults, £4 children and £6 senior citizens. For further information call 01446 710099, email vale.show@btinternet.com or visit www.valeofglamorgan-show.co.uk

Sun 24 – National Gardens Scheme, throughout the Vale

As part of the National Gardens Scheme, the garden at Bordervale in Ystradowen will be open to the public to enjoy for charity from 2 to 6pm.

Sun 24 and Mon 25 – August Medieval Fair, Cosmeston Medieval Village, Penarth

All the fun of a medieval fair from 11am to 5pm. Join the Lord of the Manor for crafts, games, medieval Punch and Judy, combat and have a go archery. For details, call 02920 701678.

Sun 24 and Mon 25 - Shakespeare's Globe Touring presents 'The Winter's Tale', St Donats Arts Centre

St Donat's Arts Centre is thrilled to welcome the prestigious Shakespeare's Globe Theatre, with its unique style of open-air performance, to Wales for the very first time. Part family drama, part fairytale, these exclusive performances



Tall ship 'Tenacious' on its way to the Barry Waterfront Festival (6 and 7 September)

start at 6.30pm and will be staged on the Renaissance lawns set against the dramatic backdrop of St Donats Castle that sits majestically overlooking the sea. The lawns will be open beforehand so pack your sun cream and enjoy a pre-performance picnic while live musicians play music from Shakespeare's time. Despite the show's title, it will be a perfect date for a summer outing. Tickets cost £15 and £14 (concessions). Call 01446 799100 or visit www.stdonats.com

programme, featuring UK ska legends "The Beat" on Saturday evening and "Big Mac's Wholly Soul Band" on Sunday evening, while the event will also include street entertainers, food and craft stalls and a number of fairground rides. Entry to the festival is free although charges apply for fairground rides, steam train rides, the ships' tours and the workshops. Call 01446 747171 for further details.

Townswomen's Guilds, Barry

A non-political, non-religious group of mostly seniors that meet regularly to enjoy various talks, slide shows, friendship, and of course, a cup of tea. All are welcome to join the group, meeting at Salem Church, Beryl Road, Barry, on the first Tuesday and second Monday of each month at 2.15pm. To find out more, please call 01446 412927.

September

Sat 6 and Sun 7 – The Barry Waterfront Tall Ship Festival

Featuring the tall ships, 'The Prince William' and 'The Tenacious,' along with 'The Ruth,' a Baltic trading ship, the annual festival is a highlight of the local calendar. There will be live music over the two-day

Listen to the council's website

You can now listen to the council's website as well as read it thanks to an innovative 'voice' feature.

'ReadSpeaker' makes the website more accessible for people who are unable to read or prefer to listen. Representing more than 20 per cent of the population in most European countries, these groups of people include those with English as their second language, learning disabilities, low literacy levels, and elderly people with impaired vision.

The new feature, combined with further accessibility features that are being developed, means the Vale council's website is now ranked second in Wales for site accessibility by national site evaluation service 'SiteMorse'. To access the feature, click on 'listen to this site' in the bottom right hand corner of each page.



Head of Performance and Development Huw Isaac said: "ReadSpeaker is currently the leading 'voice-on-the-web' service in Europe with millions of people using it every month. Adding this feature is yet another example of the council's commitment to making our website a leader for accessibility, allowing increasing numbers of Vale residents to be able to find out about the council's services online."



Circus workshops at Dyffryn Gardens – 28 July and 18 August



What's in your bin this summer?

Step closer to becoming plastic bag free

Residents are being encouraged to use reusable bags for shopping to reduce the amount of carrier bags sent to landfill. Jute reusable shopping bags are now on sale for £1.50 in council offices in Barry, Penarth, Cowbridge and Llantwit Major.

In the UK, over 13 billion bags are issued every year to shoppers – roughly 220 per person every year. For the Vale, a figure based on population size would indicate we use at least 26.6 million bags per year.

While some of these bags will be re-used once or twice, only one in 200 are recycled, meaning that billions of shopping bags are sent to landfill. Many of these will be plastic bags that can take over 400 years to break down.

Head of visible services Miles Punter said: "We want to make it easy for our residents to do their bit to help the environment. If everyone in the Vale cut the numbers of carrier bags they use by just one a week that's six million bags they'd be saving every year."



Mum Dawn and daughter Georgina with reusable bags now available from council offices.

Residents can currently use up their remaining plastic bags by using them for the recycling service; all these bags are recycled.

Improved centres

Changes aimed at improving customer service have been implemented at our recycling centres at Sully and Llandow.

Biffa, who have been awarded the contract to manage the sites for the next three years, are pleased to be working in partnership with the Vale, and depot manager Nigel Smith said: "Biffa are committed to recycling and providing an excellent customer service. We will be working to improve recycling rates at both sites and making customer visits as quick and easy as possible."

Some of the most noticeable changes are the new bright red bins, better signage and more staff to help.

Council waste development manager Nicola Williams said: "We hope it is now much easier to recycle items at both of our sites."

"We realise that there are queues at Sully during busy times, and ask our customers, if possible, to use the site during quieter times such as between 9am and 11am, to consider whether their waste could be put out for the kerbside service instead, or take their waste to Llandow."

Head of visible services Miles Punter said: "A new site is being developed on the Atlantic Trading Estate in Barry which

should replace the Sully site next year. In the meantime, we can assure customers that we are working with Biffa to provide the best service possible."

Materials that can be recycled on the site include wood, green waste, cardboard, batteries, glass, paper and clothes. Our website www.valeofglamorgan.gov.uk contains up to date details of all materials that can be recycled at both sites. Please try not to use the sites for general waste and recycle as much as possible.

Only domestic customers are allowed to use the sites, and residents can apply for a permit for small vans and trailers by calling 01446 700111.

Customers can also recycle with our kerbside service – paper, glass, cans, plastic, cardboard and green waste. Recycling doesn't get much easier than that!



Scoop the Poop this summer

With summer approaching, we would like to remind anyone with a dog to make sure they remember to 'Scoop the Poop.'

Puppies and dogs are fantastic companions and walking them is a healthy pastime. However, they do come with responsibilities and the council urges everyone to carry a bag when out with their dogs so they can clean up after them. Free bags are available from all main council offices. Failure to clean up is an offence that can result in an on-the-spot fine of £75.

The council has been working hard to combat the problem of dog fouling in the Vale and, since the launch of its 'Scoop' awareness and enforcement campaign in 2005, complaints have fallen considerably.

Senior enforcement officer Denny White explained: "We are delighted with the results of our 'Scoop' campaign and would like to say a big thank you to



Rachel Fowler, with pet Oscar, helping to remind residents that puppies and dogs come with responsibilities.

residents for their support. Sadly, there is still a small minority who do not clean up after their animals and we will target these by continuing to patrol known problem areas. We also urge residents to inform us if they have problems with dog fouling in their area."

Dog owners are reminded that they can use any plastic bag and the waste can be disposed of in any bin, as long as the bag is securely tied.

Get them before they're gone

Free compost bins are available to pensioners and those on benefits in the Vale.

Alan Bollingham (pictured) collected his compost bin, and is looking forward to using it this summer.

We still have 600 bins available and, if you would like one of these, you can collect it from the Alps depot on either a Tuesday or Thursday between 9am and 4pm. To receive a free compost bin, you need to show proof of eligibility and provide your name and address.

Discounted compost bins are also available to all Vale residents priced from just £10. Please call 01884 841 515 for details.



Great start to garden waste collection

A big thank you to everyone who is participating in the garden waste service. Over 224 tonnes of garden waste was composted during March, 2008, treble what was collected during the same time last year.

The bags are collected once every two weeks on the same day as your plastic and cardboard for recycling.

Both types of bags are now back in

stock and can be bought from the council offices in Barry (Civic), Penarth, Llantwit Major and Cowbridge. The biodegradable bags are priced at three for £1 and the re-usable bags are £1 each.

Garden waste can also be taken free of charge to special skips at Llandow and Sully Household Recycling Centres. The green waste from these sites is also composted locally.

Recycling update >>>>>>>

Our recycling rates are continuing to improve and that's all down to you – thank you. During 2007/8, we recycled 25 per cent of our waste and composted 10 per cent. We need to do better still to meet future targets and avoid being fined.

Paper, glass, cans, plastic, cardboard

and green waste can all be recycled using our kerbside service. Other materials such as batteries, electrical items, tetrapaks, wood, and clothing can be recycled at our recycling centres. Please check our website for more information on what and how you can recycle.

For further information on any of the above please contact

- C1V on 01446 700111
- e-mail C1V@valeofglamorgan.gov.uk
- or visit www.valeofglamorgan.gov.uk



Win £500 worth of vouchers of your choice

In the Vale of Glamorgan, we currently recycle and compost around 35 per cent of our waste. We need to increase this level to 60 per cent over the next few years and, to help us achieve this we would like to find out how many people are using the service and in what way.

Complete this short questionnaire and be entered into our prize draw for a chance to win a first prize of £500 worth vouchers of your choice or second and third prizes of Nintendo DS lites.

The results of this survey will be used to look at how we can improve our recycling services in the future. **Thank you for helping us to recycle more.**

What's in your bin?

The Vale of Glamorgan Council would like to know how many residents are recycling and how they are going about doing it.

Please could you complete the short questionnaire below and return it to:

Waste Management and Cleansing,

FREEPOST,

The Alps,

Wenvoe,

CF5 6GZ

by 14 July 2008

or save an envelope and complete online at www.valeofglamorgan.gov.uk

Q1 Do you currently use any of the following recycling services?

	Yes	No
Kerbside recycling	<input type="checkbox"/>	<input type="checkbox"/>
Garden waste collection service	<input type="checkbox"/>	<input type="checkbox"/>
Recycling centres, eg Llandow and Sully	<input type="checkbox"/>	<input type="checkbox"/>
Supermarket recycling banks	<input type="checkbox"/>	<input type="checkbox"/>
Town centre recycling banks	<input type="checkbox"/>	<input type="checkbox"/>
Local public house recycling banks	<input type="checkbox"/>	<input type="checkbox"/>

If you answered yes to any of the above options please proceed to question two, otherwise please go to question five

Q2 How often do you use each of the services?

	Weekly	Every other week	Once a month	Rarely	Never
Kerbside recycling	<input type="checkbox"/>	<input type="checkbox"/>	<input type="checkbox"/>	<input type="checkbox"/>	<input type="checkbox"/>
Garden waste collection service	<input type="checkbox"/>	<input type="checkbox"/>	<input type="checkbox"/>	<input type="checkbox"/>	<input type="checkbox"/>
Recycling centres eg Llandow and Sully	<input type="checkbox"/>	<input type="checkbox"/>	<input type="checkbox"/>	<input type="checkbox"/>	<input type="checkbox"/>
Supermarket recycling banks	<input type="checkbox"/>	<input type="checkbox"/>	<input type="checkbox"/>	<input type="checkbox"/>	<input type="checkbox"/>
Town centre recycling banks	<input type="checkbox"/>	<input type="checkbox"/>	<input type="checkbox"/>	<input type="checkbox"/>	<input type="checkbox"/>
Local public house recycling banks	<input type="checkbox"/>	<input type="checkbox"/>	<input type="checkbox"/>	<input type="checkbox"/>	<input type="checkbox"/>

Q3 On average which of the kerbside collection services do you find the easiest to use?

Paper, glass and cans Plastic and cardboard

Q4 On average, roughly how much of your household waste do you recycle each week?

Nearly all of it Around threequarters About half Less than half About one quarter None

Q5 What type of waste, if any, do you take to the recycling centres (Llandow and Sully)?

Electrical items Green waste Cardboard Household items Wood

Tetra Pak (juice/milk containers) Other

If other, please specify

.....

.....

.....

Q6 If you are currently not recycling any of your waste, what would encourage, or help you to do so?

- More information about recycling
- More places to recycle waste
- The introduction of fortnightly rubbish collections
- More green boxes
- All recycling collected in one box/container
- Other

If other, please specify

.....

.....

.....

Q7 Are there any other materials which you would like to be able to recycle but are not sure if or where it is possible to do so?

.....

.....

.....

.....

About you

Q8 Can you please tell us your postcode?

.....

.....

.....

Q9 What sort of property do you live in?

Flat Terraced property Semi detached house Detached house

Bungalow Sheltered accommodation Other

If other, please specify

Q10 How old are you?

16 - 24 years 25- 34 years 35 - 44 years 45 - 54 years

55 - 64 years Over 65 years

Q11 Are you?

Male Female

Q12 How would you describe your ethnic origin? We need this information for the purposes of equal opportunities monitoring.

(Please tick one box only)

- | | | |
|--|---|---|
| White British <input type="checkbox"/> | Asian British <input type="checkbox"/> | Black Welsh <input type="checkbox"/> |
| White Welsh <input type="checkbox"/> | Asian Welsh <input type="checkbox"/> | Black English <input type="checkbox"/> |
| White English <input type="checkbox"/> | Asian English <input type="checkbox"/> | Black Irish <input type="checkbox"/> |
| White Scottish <input type="checkbox"/> | Asian Irish <input type="checkbox"/> | Black Scottish <input type="checkbox"/> |
| White Irish <input type="checkbox"/> | Asian Scottish <input type="checkbox"/> | Caribbean <input type="checkbox"/> |
| White other <input type="checkbox"/> | Indian <input type="checkbox"/> | African <input type="checkbox"/> |
| Mixed white and black Caribbean <input type="checkbox"/> | Pakistani <input type="checkbox"/> | Black other <input type="checkbox"/> |
| Mixed white and black African <input type="checkbox"/> | Bangladeshi <input type="checkbox"/> | Chinese <input type="checkbox"/> |
| Mixed white and Asian <input type="checkbox"/> | Other Asian <input type="checkbox"/> | Other <input type="checkbox"/> |
| Other mixed <input type="checkbox"/> | Black British <input type="checkbox"/> | |

If you have ticked any of the 'other' options, please specify your ethnic origin

.....

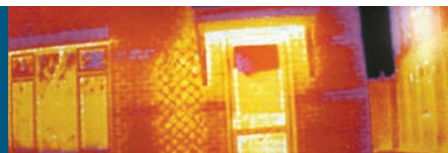
Q13 If you would like to be entered into the prize draw please provide name, address and contact telephone number

.....

.....

.....

Thank you



News in brief

Three routes

New orienteering routes have been set up to help explore the much-loved Porthkerry Country Park in Barry.

The course was designed by the South Wales Orienteering Club in conjunction with the council's ranger service, and was made possible thanks to funding from a Sports Council for Wales Community Chest grant. There are three routes with distances ranging from 1.5km up to 4km.

Ranger Mel Stewart said:

"The permanent orienteering course is open for schools, groups and visitors to the park and will be complemented by a new wildlife trail."



For more information contact 01446 733589 or email porthkerry@valeofglamorgan.gov.uk

Be considerate

Parties, especially outdoors, can be a great way of relaxing, socialising and catching up with family and friends.

Just bear the following in mind, say council environmental health officials, when the party gets into full swing:

- if you are planning to have a barbecue, let your neighbours know; maybe you could even invite them;
- if you are playing music inside or outside your house, keep the volume down;
- if you stay out in the garden, remember that noise travels ... especially at night;
- bass or low frequency music travels a long distance and is difficult to reduce so remember to switch off any extra bass system, and
 - people tend to have their windows open in the summer – remember that noises can be heard easier than you think.

Enjoy the summer, but please remember to be considerate to your neighbours.

Making your home more energy efficient

In these days of soaring fuel prices and evident climate change, it is essential for us to improve the energy efficiency of our homes.

The Welsh Assembly Government wants new homes to produce net zero carbon emission by 2011.

For those of us in older properties we, too, can do many things to reduce carbon emissions and the costs of fuelling our homes. There are new subsidies available for ALL householders to help with the installation of cavity wall and loft insulation. Partial grants are available to everyone whilst grants are available for FREE insulation to householders with at least one occupier over the age of 70 years and the household in receipt of certain qualifying benefits. For further information on these grants, please contact OneVale on 01446 700111.

Don't forget that you can also save significantly simply by switching electrical devices off at the mains and not leaving them connected or running on standby.

Can the Vale Health Through Warmth scheme help you?

Health Through Warmth aims to provide warmer and healthier living conditions for those people living with cold and damp aggravated health conditions such as respiratory problems, heart disease, arthritis and many other illnesses.

Having a warmer home can help to improve comfort and the quality of life.

Health Through Warmth may be able to help with home insulation measures and heating system improvements including boiler replacement/repair.

These measures not only make your home warmer, but save energy and therefore money on your heating bills.

In the majority of cases grants are available to pay for the work, however where grants are unavailable, funds may also be available from other sources depending on individual circumstances.

If there is someone living in a property with a long term debilitating illness, regardless of their age or the tenure, then we are here to help!

For further information on how the scheme can help, please contact the Health Through Warmth co-ordinator on 01446 700111.

Could energywatch help you get more from your gas and electricity supplier?

energywatch, your gas and electricity watchdog, has set up a Priority Consumer Team to make sure consumers are not missing out on the many free services and support they are entitled to such as:

- free services - from bills in accessible formats to free gas safety checks;
- free, clear and accurate information on who is the cheapest supplier based on your household needs. This could save you up to £100 per year and maybe more if you have never switched supplier;
- help claiming the many grants available for insulation and new heating systems;
- advice on benefits, and support in sorting out high bills and metering problems with suppliers.

Contact energywatch to find out more on 0845 688 9597.



Penarth couple Granville and Kay French enjoy their home with the help provided through Health Through Warmth.

Useful contacts:

- Health Through Warmth – for insulation grant enquiries or for more information on the Health Through Warmth scheme – 01446 700111
- energywatch – gas and electricity consumer watchdog – 0845 688 9597 or www.energywatch.org.uk
- Energy Savings Trust – tips on how to save energy – www.energysavingtrust.org.uk or 0800 512 012
- Low Carbon Buildings Programme – grants for the installation of micro generation technologies such as solar panels, wind turbines, ground sourced heat pumps etc – www.lowcarbonbuildings.org.uk/home or 0800 915 0990
- EAGA – details on the Welsh Assembly Home Energy Efficiency Scheme grants – www.heeswales.co.uk or 0800 316 2815