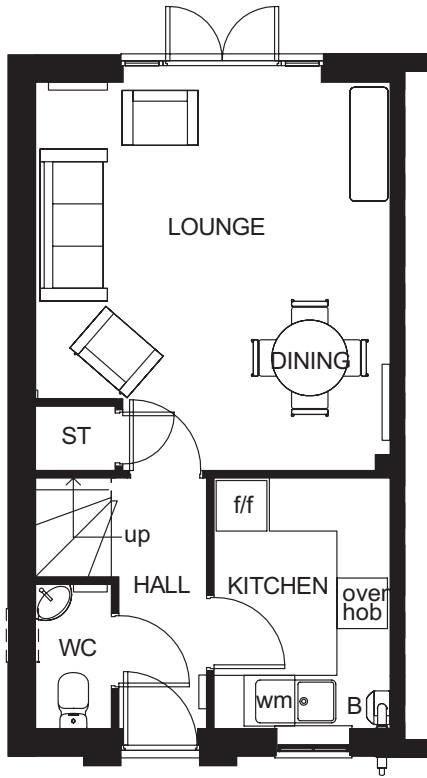


## 3 BEDROOM END-TERRACED HOME



- Light flows into this three bedroom family home through oversized windows, giving it a bright and airy feeling
- A spacious lounge with dining area and French doors leading to the garden, and a fitted kitchen are perfect for modern living
- Upstairs are a double and two single bedrooms, and a family bathroom

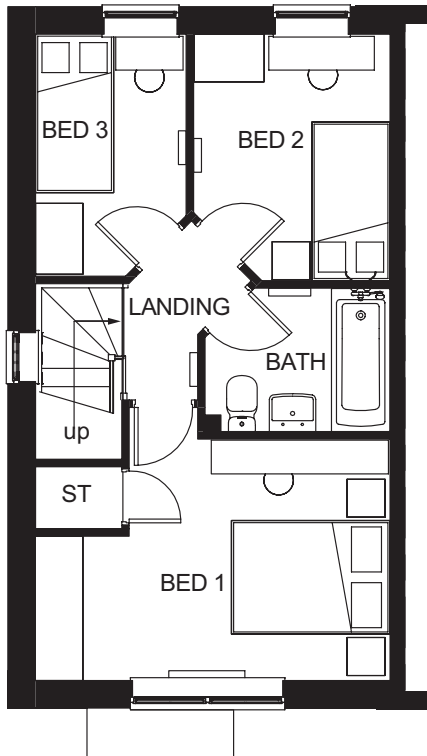




### Ground Floor

Lounge/Dining	4602 x 4201mm	15'1" x 13'9"
Kitchen	2971 x 2086mm	9'9" x 6'10"
WC	1711 x 898mm	5'7" x 2'11"

(Approximate dimensions)



### First Floor

Bedroom 1	3238 x 4204mm	10'7" x 13'10"
Bedroom 2	2922 x 2328mm	9'7" x 7'8"
Bedroom 3	2871 x 1785mm	9'5" x 5'10"
Bathroom	2193 x 1700mm	7'2" x 5'7"

(Approximate dimensions)

<b>KEY</b>	B	Boiler	f/f	Fridge/freezer space
	ST	Store		
	wm	Washing machine space		