

# Eligible benefits list

Nest is a Welsh Assembly Government scheme designed to make private sector households warmer and healthier places to live. To be eligible for a Nest Whole House assessment, householders must own or privately rent their home, be in receipt of a means-tested benefit, and live in an energy inefficient property with an energy efficiency rating of F or G.

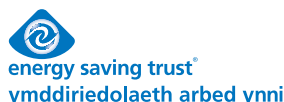
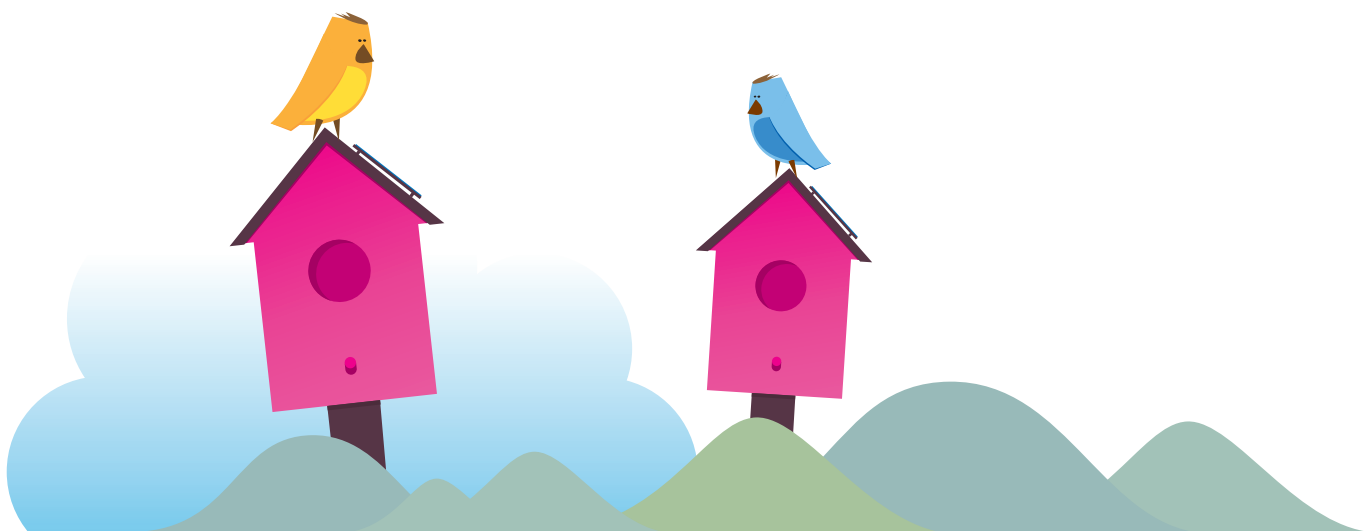
## What are the Means Tested Benefits?

To qualify for Nest, a householder must be in receipt of one or more of the following benefits:

- Child Tax Credit where the household income is below £15,680
- Council Tax Benefit (excluding the single person occupancy reduction)
- Housing Benefit
- Income Based Job Seekers Allowance
- Income Related Employment and Support Allowance
- Income Support
- Pension Credit
- Working Tax Credit where the household income is below £15,680

If you own or privately rent your property, are in receipt of a means tested benefit, and think your home could be F or G rated, please call freephone 0800 512 012 to make an application to Nest.

Call freephone 0800 512 012  
Visit [nestwales.org.uk](http://nestwales.org.uk)



Nest is a Welsh Assembly Government funded programme managed by British Gas. Energy Saving Trust is a material subcontractor of British Gas.

# Rhestr o fudd-daliadau cymwys

Cynllun Llywodraeth Cynulliad Cymru yw Nyth, i wneud cartrefi'r sector preifat yn lleoedd cynhesach ac yn iachach i fyw. I fod yn gymwys am Asesiad Tŷ Cyfan gan Nyth, mae'n rhaid bod yn berchen cartref neu'n rhentu'n breifat, yn derbyn budd-dal ar sail prawf modd ac yn byw mewn eiddo ynni aneffeithiol gyda graddfa effeithiolrwydd ynni o F neu G.

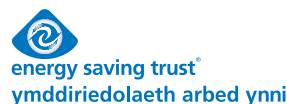
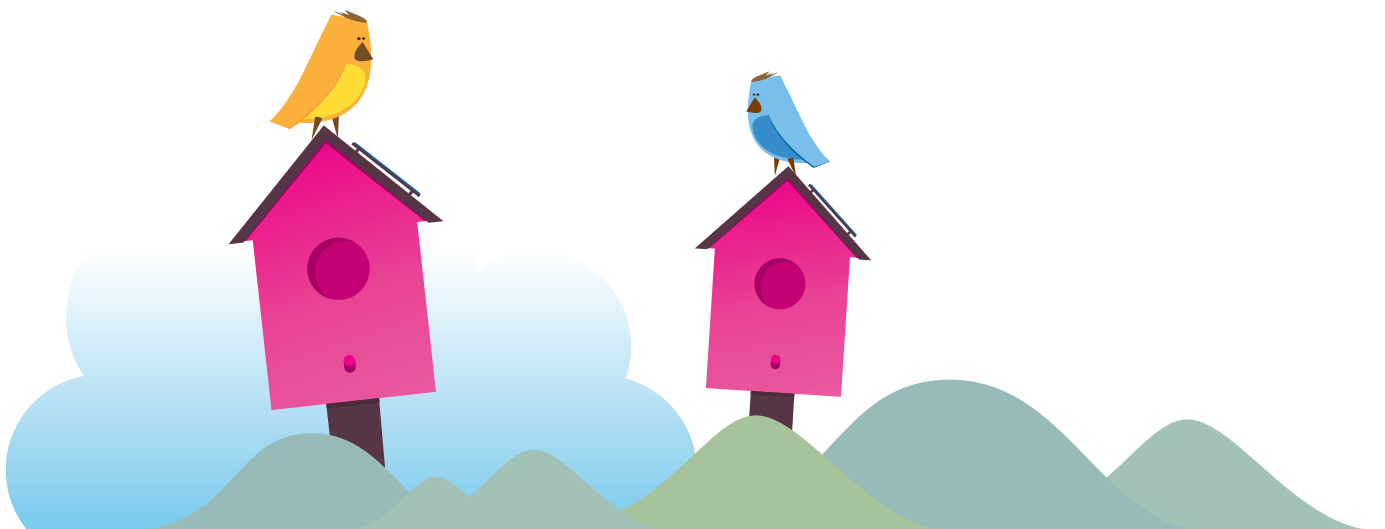
## Beth yw Budd-daliadau ar sail Prawf Modd?

I fod yn gymwys am Nyth, mae'n rhaid i ddeilydd y cartref fod yn derbyn un neu ragor o'r budd-daliadau canlynol:

- Credyd Treth Plant ble mae incwm y cartref yn is na £15,680
- Budd-dâl Treth y Cyngor (ac eithrio gostyngiad un person)
- Budd-dal Tai
- Lwfans Ceisio Gwaith ar Sail Incwm
- Lwfans Cyflogaeth a Chymorth ar Sail Incwm
- Cymhorthdal Incwm
- Credyd Pensiwn
- Credyd Treth Gwaith ble mae incwm y cartref yn is na £15,680

Os ydych yn berchen neu'n rhentu'ch cartref yn breifat, yn derbyn budd-dâl ar sail prawf modd ac yn meddwl y gallai'ch cartref fod yn raddfa F neu G, ffoniwch rhadffôn 0800 512 012 i wneud cais am Nyth.

**Ffoniwch rhadffôn 0800 512 012**  
Ymweld â [nestwales.org.uk](http://nestwales.org.uk)



Rhaglen yn cael ei hariannu gan Llywodraeth Cynulliad Cymru a'i rheoli gan Nwy Prydain yw Nyth. Mae'r Ymddiriedolaeth Arbed Ynni'n is-gontractwr sylweddol o Nwy Prydain.