

Vale of Glamorgan Local Development Plan 2011-2026

Designation of Landscape Character Areas



Background Paper

September 2013



Background Paper Update 2013

The Vale of Glamorgan Council *Designation of Landscape Character Areas – Final Report (August 2008)* was prepared by independent consultants acting on behalf of the Council.

The assessment and final report were based on Level 3 LANDMAP information collected and quality assured in partnership with Natural Resources Wales (previously the Countryside Council for Wales) and the Landscape Character Areas identified were defined through a holistic approach which seeks to map areas of distinct landscape character.

The Council has re-assessed the contents of the study and considers that it remains relevant and up-to-date and based on current best practise. As a result, no changes have been made to the assessment work undertaken by the consultants and no amendments to the identified Landscape Character Areas are proposed.

The unassessed Historical Landscapes Evaluation levels are available in the 'Review Against Historic Landscapes Evaluations Update' report February 2011 (September 2013).

VALE OF GLAMORGAN COUNCIL

A REVIEW OF LANDSCAPE CHARACTER AREAS

AUGUST 2008

**TACP
10 Park Grove
Cardiff
CF10 3BN**

Project No: 8243

Revision No.	Date of Revision	Checked by	Date	Approved by	Date
0	17.03.08	CD	17.03.08	LJ	17.03.08
1	05.06.08	CD	05.06.08	LJ	05.06.08
2	13.08.08	CD	13.08.08	LJ	13.08.08

CONTENTS

	Page No
1.0 Introduction	1
2.0 Landscape Characterisation	2
Landscape Character Areas	8

1.0 INTRODUCTION

1.1 TACP Consultants were commissioned by the Vale of Glamorgan Council in January 2008 to undertake a review of the Landscape Character Areas (LCA's). These were originally developed from the Landscapes Working for the Vale of Glamorgan study published in 1999. This study has been carried out in response to two factors namely:-

- i) LANDMAP methodology - the original study was carried out using the then, emerging newly developed LANDMAP methodology. Since then much of the Welsh landscape has been assessed using LANDMAP and this resulted in a review and updating of the methodology in 2003. In addition, the Countryside Council for Wales (CCW) introduced a quality assessment programme whereby all LANDMAP studies have been reviewed against the 2003 methodology. The Council has recently updated its LANDMAP Information System against this method which has resulted in some instances in amendment to aspect areas, a revision of boundaries and amended evaluation levels.
- ii) The Council have also commenced the preparations of the Local Development Plan which will replace the current Unitary Development Plan.

1.2 The identification of the LCA's draws upon a consideration of the five evaluated aspect topics and their associated aspect area plans and data sets found in LANDMAP, namely:-

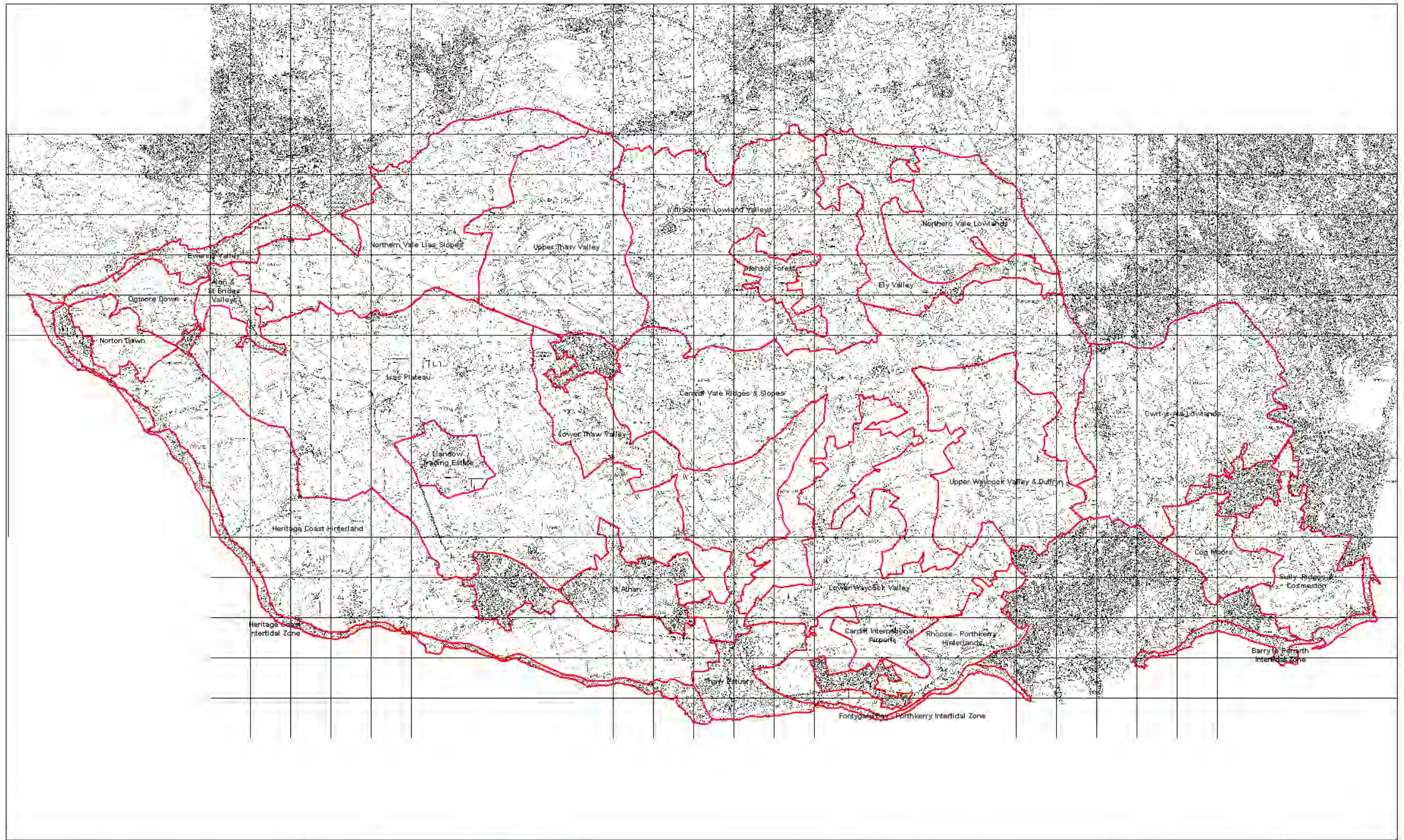
- Geological Landscapes
- Landscape Habitats
- Visual and Sensory Landscapes
- Historic Landscapes
- Cultural Landscapes

and through the use of an holistic approach identifies and maps the areas of distinct landscape character and the key facets and features of each LCA.

1.3 An important consideration is the use of Geographical Information Systems (GIS) to store and manage the LANDMAP data. This allows the user to interrogate data sets and develop thematic maps. Accordingly this report provides only an overview of the data. It is important that the user treats this document as an introduction to the LANDMAP GIS data and uses the information to obtain more detailed information about each LCA.

2.0 LANDSCAPE CHARACTERISATION

- 2.1** A key feature of the LANDMAP methodology is the wealth of data provided for each aspect area within the five aspect topic layers. However, it is also valuable to understand how the aspect topics can be amalgamated to identify distinctive areas of landscape which have a recognisable “sense of place” or “local identity”. This can be expressed through the concept of landscape character areas, whereby the different aspect topic layers are ascertained and the combination is broadly the same and/or have distinct characters and a coherent identity. LCA’s therefore provide a useful framework for description, management and policy formulation.
- 2.2** The boundaries between LCA’s are rarely distinct. Effectively they are based upon the best judgement of a gradual, but discernable change in character. Furthermore the number of LCA’s identified and their scale will reflect the particular qualities of the area concerned. In this instance, the Vale of Glamorgan is a largely rural authority covering some 330 square kilometres. The majority of the area is an open, rolling plateau, given over to farming, and dissected by a number of rivers, namely the Ewenny, Thaw and Waycock and Ely rivers. The area has a distinctive rocky coastline, with the western section from Ogmere by Sea to Aberthaw designated as Heritage Coast. The remainder of the coastline is more developed with the settlements of Barry and Penarth. Inland, the main settlements are at Llantwit Major and Cowbridge. Other distinctive landscape elements are the operational air force base at St Athan and Cardiff International Airport close by.
- 2.3** In reviewing the updated LANDMAP data twenty seven LCA’s have been identified as follows (figure 1.0).



© Crown copyright. All rights reserved.
Licence number 100018271



TACP

TERRACONCEPT
PLANNING
CONSULTANTS

NOTES

VALE OF GLAMORGAN
LANDSCAPE CHARACTER AREAS

DRAWN: CD CHECKED: LJ OFFICE: CARDIFF

NOT TO SCALE DATE: MARCH 2008

FIGURE / DRAWING NO.

FIGURE 1.0

REV

LCA 1 - Ewenny Valley

A distinctive river valley forming the western boundary of the Unitary Authority and running into the sea at Ogmore by Sea. It forms part of a much wider valley landscape extending across into Bridgend and contains the historically and culturally important landscape of Merthyr Mawr.

LCA 2 - Northern Vale Lias Slopes

An area of open, rolling landscape, predominantly agricultural in use, which runs down to the authority boundary at Bridgend and along the M4 motorway. It has a high point of 120m AOD and affords extensive views inland to Bridgend, Waterton and the motorway, and is underlain by the Blue Lias deposits (Jurassic).

LCA 3 - Heritage Coast Intertidal Zone

The LCA extends from Ogmore by Sea down to Aberthaw and falls almost entirely within the designated Heritage Coast. The LCA is characterised by exposed cliff face and associated wave cut platform and local beaches. The distinctive banding of the Lias, shale and carboniferous limestone creates an iconic landscape recognised by its designation.

LCA 4 - Thaw Estuary

Includes the lower reaches of the Thaw Valley and the sandy estuarine fan of the river itself. The area is characterised by extractive industries and the power station and associated power line landscape.

LCA 5 - Fontygary Bay – Porthkerry Intertidal Zone

A continuation of the rocky foreshore and wave cut platform. Identified as a separate area given its juxtaposition to Aberthaw and the major urban area of Barry.

LCA 6 - Barry to Penarth Intertidal Zone

Another area of rocky foreshore and cliffs, although the underlying geology is more of a conglomerate, giving a different visual and structural appearance. It excludes the intertidal zone around Penarth, reflecting the latter's urban character.

LCA 7 - Heritage Coast Hinterland

Extending from Ogmore by Sea to Llantwit Major, this is an area of low, dissected coastal plateau, agricultural in character and exhibiting coastal character in terms of exposure, glimpses of the sea and windblown vegetation.

LCA 8 - Lias Plateau

Open rolling agricultural landscape identified to reflect loss of coastal influences noted for LCA 7 above. Mostly arable farms with scattered farmsteads and houses.

LCA 9 - Llandow Trading Estate

Built around the former RAF Llandow airfield a distinctive area of former airfield buildings, new warehouses and business park developments. Exhibits its former use with examples of dispersal areas integrated into farm use. A rather incongruous development area within the centre of the rural Vale.

LCA 10 - Upper Thaw Valley

A sinuous, wide open valley with steeply rising valley sides, many of which are wooded. Flat valley floor with rectilinear fields and drainage ditches. Sense of solitude and quietness and extending to the northern edge of Cowbridge.

LCA 11 - Norton Down

Part of a broad ridge of Carboniferous limestone entirely within the Heritage Coast designation forming a distinctive area of coastal plateau (up to 90 metres AOD) which is intensively farmed with arable fields and distinctive trimmed hedgebanks.

LCA 12 - Ogmore Down

Another area of lowland plateau that forms a significant area of heathland, interspersed with the Golf Club. Despite the artificial nature of the course it still maintains a sense of exposed heathland.

LCA 13 - Ystradowen Lowland Valleys

A complex system of lowland valleys and hills formed largely by glacial hills which form the upper reaches of the streams that flow into the Thaw and Ely rivers. The landscape is a mosaic of fields, hedgerows, woodlands and lowland mire.

LCA 14 - Hensol Forest

A distinctive area of woodland, predominantly coniferous managed by the Forestry Commission. There is a sense of seclusion and confinement within the forest, which is a widely visible feature within the wider landscape.

LCA 15 - Ely Valley

Broad, lowland river valley with a flat valley floor, which runs eastwards out of the Vale and into the confluence of the Taff and Cardiff Bay. A relatively isolated area with scattered farmsteads and housing, as well as the Bosch complex which abuts Junction 34 of the M4 motorway, with a mosaic of fields of pasture and rougher ground (Pendoylan Moors).

LCA 16 - Northern Vale Lowlands

Area of undulating lowland and associated river valleys which encloses the Ely floodplain. Includes the settlements of St Brides-super-Ely and Peterson-super-Ely. The area, whilst relatively isolated suffers noise intrusion from the adjacent M4 and A4232 roads.

LCA 17 - Cog Moors

A distinctive area of reclaimed marshland, originally associated with the development of Barry Docks to the south. The area forms a flat, agricultural landscape crossed by a network of drainage ditches. It has a feel of lack of management and suffers degradation from the neighbouring urban areas.

LCA 18 - Cardiff International Airport

An area of lowland plateau developed as an airfield and subsequently as a major airport. Distinctive areas of open grassland and hardstanding with buildings clustered along its northern edge.

LCA 19 - Lower Thaw Valley

Extending from Cowbridge to Aberthaw, a sinuous, steep sided and enclosed lowland valley. A mosaic of fields, with gappy hedges, fences and a network of drainage ditches.

LCA 20 - Lower Waycock Valley

A major tributary of the Thaw, the Waycock forms a narrow, wooded valley and includes the historically important landscape associated with Llancarfan.

LCA 21 - Upper Waycock Valley and Duffryn

A broadly, gently sloping valley, traversed by several minor streams. A mosaic of mostly pastoral fields enclosed by well trimmed hedges, it includes the attractive stone village of Duffryn, and Duffryn House with its associated formal gardens, listed on the CADW/ICOMOS Register of Historic Parks and Gardens of Outstanding Interest in Wales.

LCA 22 - Central Vale Ridges and Slopes

A large area of undulating lowland hill landscape, which offers views across the Vale and which includes the visually important ridgeline along which the A48 runs. An area of small to medium sized fields with hedgerows and areas of woodland mostly on the higher ground to the north.

LCA 23 - Cwrt yr Ala Lowlands

An area of rolling, undulating hills and valleys underlain by Triassic mudstones and Jurassic limestone and characterised by low tabular hills centred on the Cwrt yr Ala valley. A mosaic of fields, hedgerows and woodlands, the latter being set on the steeper valley sides and ridgelines, providing a green backcloth to Cardiff.

LCA 24 - Sully Ridge / Cosmeston

A small, but distinctive area underlain by carboniferous limestone, forming a locally prominent ridge. It affords extensive views across the Bristol Channel, however the sense of isolation is compromised by the adjacent suburbanisation associated with Penarth, Dinas Powys and Sully.

LCA 25 - Alun and St Brides Valleys

Increased river valleys through the Carboniferous limestone, running into the Ewenny River. Narrow and dominated by woodland and trees. Despite the presence of the Barry – Bridgend railway and former stone quarries it exhibits a sense of enclosure and isolation.

LCA 26 - Rhoose – Porthkerry Hinterland

A small area of coastal plateau, affected by the settlements of Fontygary and Rhoose, as well as Cardiff Airport and the industrial sites at Aberthaw. Porthkerry Country Park provides a distinctive set of wooded, incised valleys into the plateau.

LCA 27 - St Athan

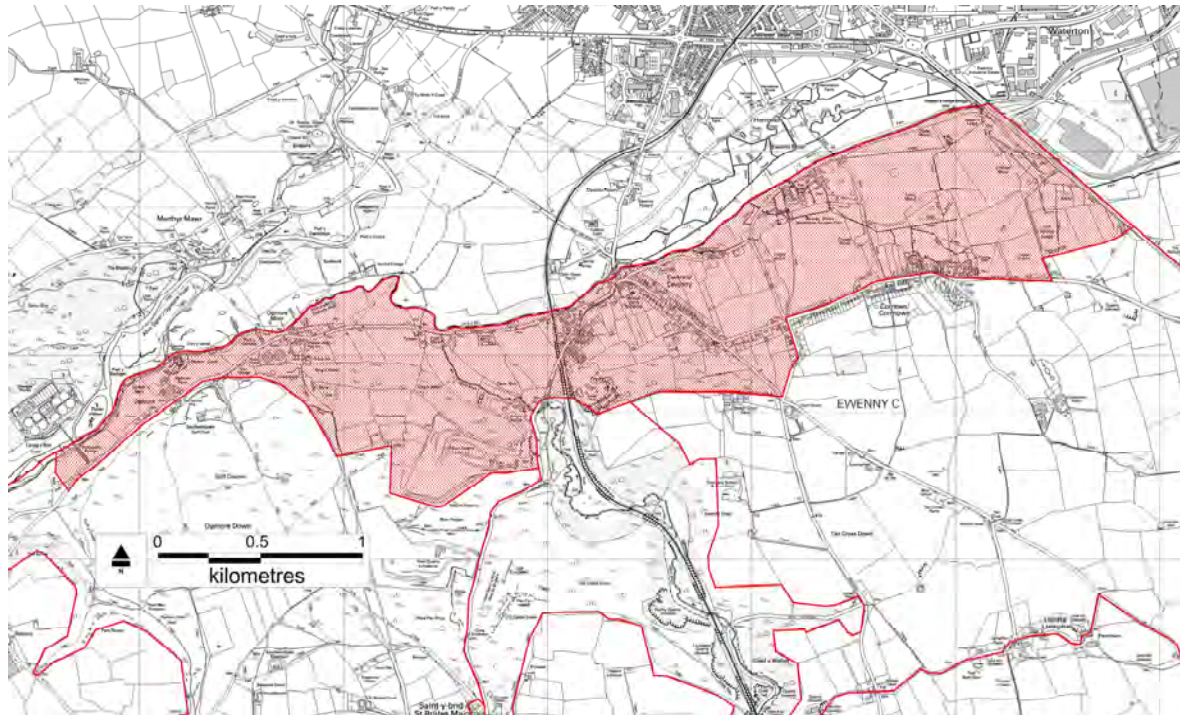
An operational military airbase, part of the wider coastal plateau. It is characterised by the open, exposed airfield, surrounded on the western and eastern flanks by associated building complexes and the village of St Athan on the south east.

Each of the LCA's is described in more detail and includes the following information:-

- i) **Description** - this defines the general location of the LCA, including its boundaries and interrelationship with the wider Vale landscape. Particular reference is made to the key features and qualities identified within the LANDMAP study.
- ii) **Key Issues** - an identification of the key landscape policy and management issues.
- iii) **LANDMAP Aspect Area Matrix** - attached to each LCA is a matrix which includes the aspect areas by topic included in each LCA together with description, evaluation and evaluation criteria together with a summary of the main management issues.

LANDSCAPE CHARACTER AREA 1 - EWENNY VALLEY

Plan



Photographs



Ogmore Road to north-east

Description

The Ewenny Valley is part of an active lowland river system which forms a distinctive flood plain on the western edge of the Vale Unitary Authority area. The river itself forms the boundary, and the river system is part of a much wider landscape that extends westwards into Bridgend and includes the historically important Merthyr Mawr landscape. The LCA includes the valley floor together with the adjacent valley sides which are visually interlinked.

Geological Landscapes

Part of an active lowland river system within a larger river catchment system that includes the Alun and other tributaries. Adjacent valley sides form part of the raised limestone plateau (Aspect Area GL747) that forms part of the Norton Down (LCA 11) and Ogmore Downs (LCA 12) Character Areas.

Landscape Habitats

The area includes a range of riparian and lowland habitats including grasslands and woodlands. The latter habitats are found on the adjacent valley sides (Kemp Wood, Craig Ddu).

Visual and Sensory Landscapes

The LCA lies within the mosaic lowland valley LANDMAP classification (Aspect Area VS797), including the adjacent valley sides (Flemmings Down some 90m AOD). Visually the area reflects more closely to the Merthyr Mawr dune landscape on the other side of the river, which includes a number of visual detractors such as the Sewerage Works. Ewenny village is the main settlement within the LCA and is linear in form, running inland to join Corntown in the adjacent LCA.

Historic and Cultural Landscapes

The valley contains a number of important features, including Merthyr Mawr and Ogmore Castle. Merthyr Mawr lies within Bridgend but is contiguous to the LCA and informs its character. Ewenny Priory, a former Benedictine Monastery lies adjacent to the river and is a key historic and cultural feature.

Key Policy and Management Issues

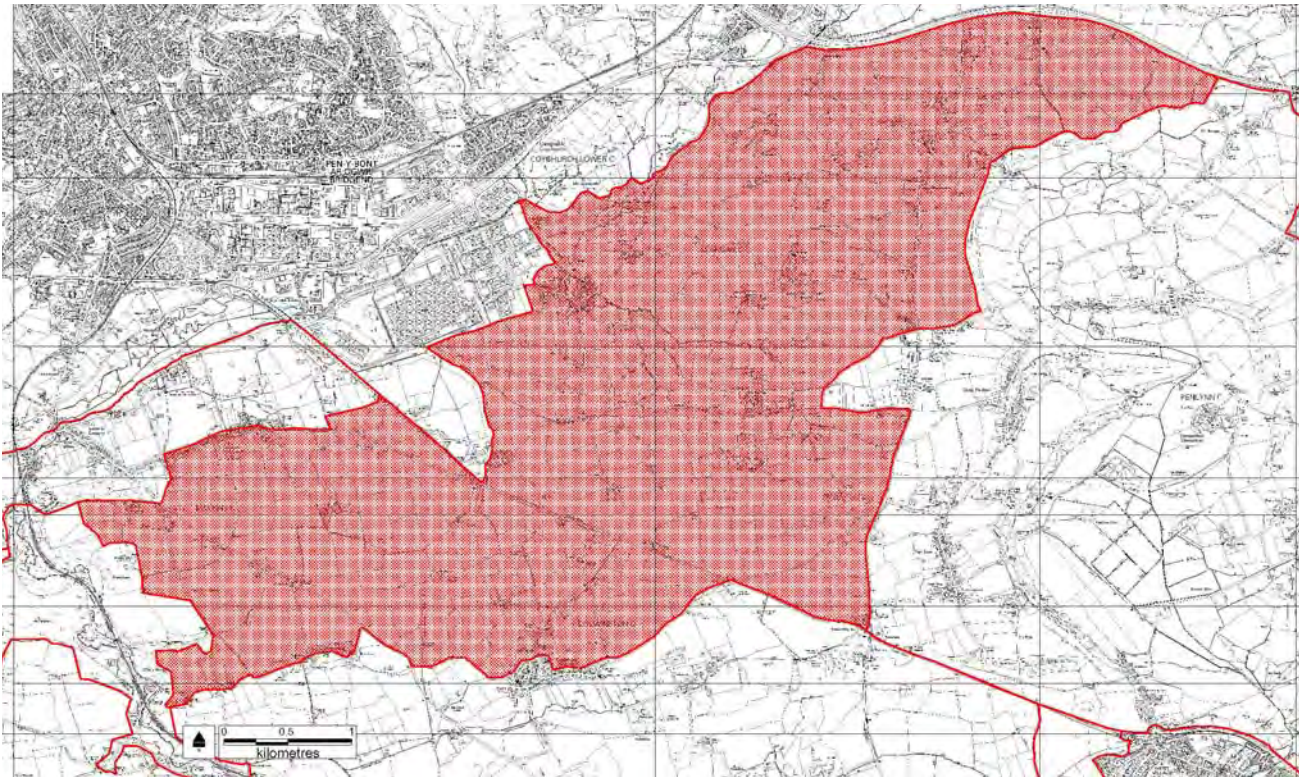
- It is important that close liaison is maintained with Bridgend Council to ensure any proposals do not undermine the integrity of the LCA, particularly its distinctive visual qualities.
- Suburbanisation/inappropriate development and roadside management.
- Loss of boundary features and other vegetation, intensive agricultural practices.
- Damage to habitats through off road parking and continued pressure for access and other recreation facilities.
- Management of broadleaf woodland and semi-natural vegetation.

LCA 1 Ewenny Valley

Aspect	Aspect Area	Area Name	Description	Overall Evaluation	Evaluation Criteria									Management Issues	
					1	2	3	4	5	6	7	8	9		
Geological	GL 492	Ewenny-Penllyn	Other	Outstanding	O	O	O	O							Conserve existing geomorphological integrity
	GL 709	Llangan	Undulating lowland hill terrain	Moderate	L	L	L	L							Conserve existing geomorphological integrity
	GL 747	Ogmore-St. Brides	Other	Outstanding	H	O	O	O							Conserve existing geomorphological integrity
	GL 885	Alun-Ewenny	Active lowland river-flood plain system	Moderate	H	L	M	M							Conserve existing geomorphological integrity
Landscape Habitats	LH 385	Cwm Alun	Mosaic	Outstanding	H	H	U	U	U	M	H	O			Unassessed
	LH 435	Cowbridge West	Improved Grassland	Moderate	M	L	H	U	L	L	M	U			Intensive agricultural management generally unsympathetic. Encourage less intensive land management practices.
	LH 582	Ogmore-Llantwit Arable Belt	Mosaic	Moderate	M	L	M	U	L	M	L	H			The provision of set aside buffer strips at the edges of the arable fields and sympathetic management of field boundaries would increase biodiversity interest.
	LH 659	Old Castle Down	Mosaic	Outstanding	O	O	U	U	U	U	O	O			CCW and others such as Butterfly Conservation encourage active management of the site. Grazing and selective management of vegetation to encourage biodiversity interest. Management of vegetation to discourage uncontrolled fires.
Visual and Sensory	VS 378	Alun Valley	Wooded Lowland Valleys	High	H	M	H	M							Manage broadleaf woodland and semi natural vegetation.
	VS 663	Ogmore and Old Castle Downs	Open Rolling Lowland	Outstanding	O	M		H							Minimal management intervention except golf course. Optimise semi-natural vegetation.
	VS 797	Ewenny Valley	Mosaic Lowland Valleys	Moderate	M	M	M	M							Suburbanisation/development and roadside management. Reinforce screening vegetation to absorb development.
Historical Landscapes	HL 022	A48 Lougher to Chepstow communication co	Communications	Unassessed											
	HL 034	Ogmore Down	Marginal Land	Unassessed											
	HL 051	Llandow Rural	Irregular Fieldscapes	Unassessed											
	HL 057	Ewenny Priory	Nucleated Settlement	Unassessed											
Cultural	CL 007	Ewenny Quarry	Industrial	High	L	U	L	U	H	U	U	L	U		Apparently well run, with limited impact on the surroundings. Continue as now within the buffer zones identified.
	CL 009	Vale of Glamorgan Railway	Infrastructure	High	M	H	H	U	L	H	L	U	M		Assumed to be good and appropriate. Continue to maintain and promote use of the line.
	CL 023	Merthyr Mawr Registered Landscape	Institutions	Outstanding	L	O	L	U	H	H	L	H	U		Vigilance against the incursion of inappropriate development through designation.
	CL 024	Ewenni and Corntown	Artistic	High	M	H	H	U	H	H	L	H	U		Seek to maintain the social, economic and creative contribution of the potteries alongside the statutory protections for the Priory.
	CL 039	Vale of Glamorgan Rural Landscape	Rural	High	H	O	L	U	O	H	L	H	L		Maintain consistent planning policies to preserve the landscape.

LANDSCAPE CHARACTER AREA 2 - NORTHERN VALE LIAS SLOPES

Plan



Photographs



View across to Waterton from the A48

Description

A relatively large, open rolling lowland agricultural landscape rising to about 100m AOD, underlain by the broad Lias ridge that runs through this part of the Vale. It includes a small section of the Ewenny valley at Ty Candy where the Unitary authority boundary wraps around the Waterton Industrial Estate. The northern boundary is formed by the M4 motorway. It faces "inland" and affords extensive views over Bridgend and Waterton.

Geological Landscapes

It is formed by the broad Lias ridge, and includes the broad depression at Llangan underlain by the Blue Lias. The north western section up to the authority boundary is part of the Ewenny river system.

Landscape Habitats

The area includes a range of terrestrial dry lowland habitats including areas of neutral and improved grassland. Parts of the lower lying areas of the LCA have marshy habitats (aspect area LH453). There are a few woodlands predominantly along the Ewenny valley such as around Tan-y-Lan, Cae Coed and the Ruthin area.

Visual and Sensory Landscapes

An area of open, rolling lowland ridges and valleys extending from Ewenny across to the edge of the Thaw Valley (LCA 10) and up to the authority boundary in the north. The area is typified by a landscape of medium to large fields with hedgerows and trees. The lack of extensive areas of woodland allow for a high level of intervisibility within and out across the wider landscape. These distant views detract from the character of the area, particularly those to Bridgend and Waterton which brings an urban feel to the area.

Historic and Cultural Landscapes

The LANDMAP study has identified a large aspect area (CL039) which covers the majority of the rural Vale area. Its designation reflects the rich agricultural history of the area and its associations with rural life. This is a common feature of many of the LCA's and needs to be seen within that context.

Key Policy and Management Issues

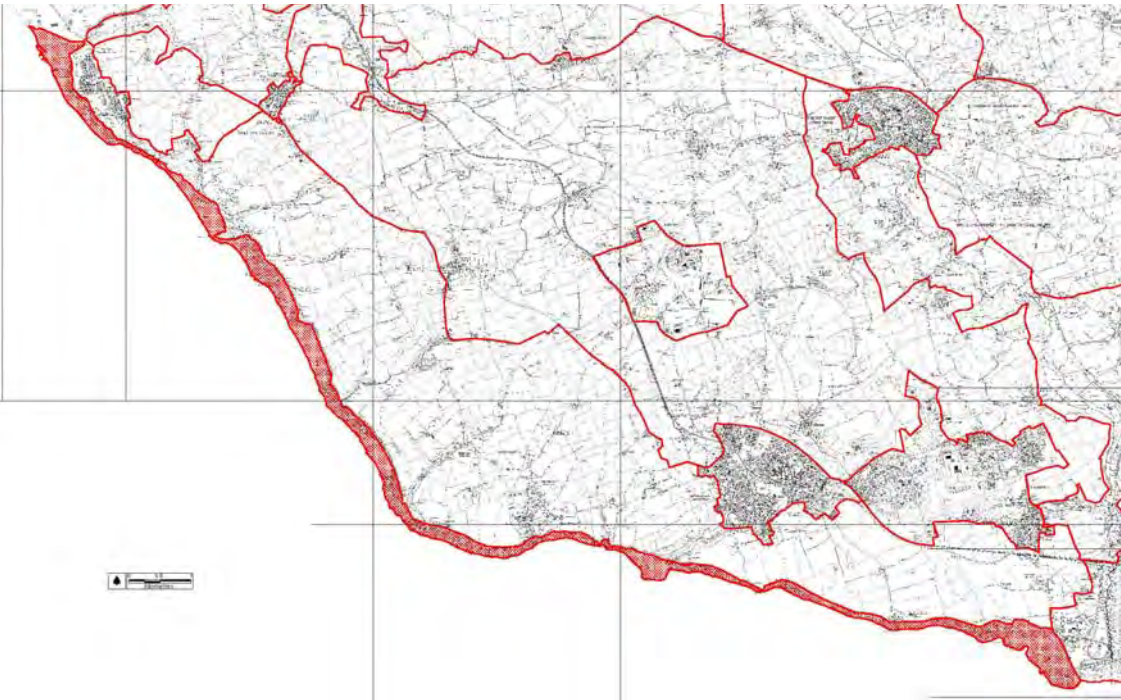
- Loss of integrity of the wider agricultural landscape, such as boundary hedgerows, hedgerow trees and small areas of woodland.
- Continued impact upon the visual and sensory qualities of the area with increased development at Waterton.
- Continued improvements to agriculture with resultant loss of habitat diversity.

LCA 2 Northern
Vale Lias Slopes

Aspect	Aspect Area	Area Name	Description	Overall Evaluation	Evaluation Criteria									Management Issues	
					1	2	3	4	5	6	7	8	9		
Geological	GL 492	Ewenny-Penllyn	Other	Outstanding	O	O	O	O							Conserve existing geomorphological integrity
	GL 630	Ty Candy	Active lowland river-flood plain system	Moderate	M	M	H	M							Conserve existing geomorphological integrity
	GL 709	Llangan	Undulating lowland hill terrain	Moderate	L	L	L	L							Conserve existing geomorphological integrity
	GL 863	Llanwit-St. Athan	Lowland plateau	Moderate	M	M	M	M							Conserve existing geomorphological integrity
Landscape Habitats	LH 385	Cwm Alun	Mosaic	Outstanding	H	H	U	U	U	M	H	O			Unassessed
	LH 394	Ruthin	Mosaic	High	H	M	U	U	U	M	H	U			Sympathetic management of field boundaries.
	LH 435	Cowbridge West	Improved Grassland	Moderate	M	L	H	U	L	L	M	U			Intensive agricultural management generally unsympathetic. Encourage less intensive land management practices.
	LH 582	Ogmore-Llantwit Arable Belt	Mosaic	Moderate	M	L	M	U	L	M	L	H			The provision of set aside buffer strips at the edges of the arable fields and sympathetic management of field boundaries would increase biodiversity interest.
	LH 948	Waterton	Industrial	Low	L	U	U	U	U	U	L	U			Unassessed
Visual and Sensory	VS 805	Lias Plateau	Open Rolling Lowland	Moderate	M	M	M	M							Intensive farming reducing interest in landscape. Introduce cover and interest into landscape.
	VS 943	Northern Vale Lias Slopes	Open Rolling Lowland	Moderate	M	M	M	M							Declining trees and hedgerows in the landscape. Improve tree cover
Historical Landscapes	HL 022	A48 Lougher to Chepstow communication co	Communications	Unassessed											
	HL 034	Ogmore Down	Marginal Land	Unassessed											
	HL 051	Llandow Rural	Irregular Fieldsapes	Unassessed											
	HL 052	Llysworney and Llandough	Regular Fieldsapes	Unassessed											
	HL 053	Ystradowen	Irregular Fieldsapes	Unassessed											
	HL 054	Llangan Welsh St Donats and Pendoylan	Regular Fieldsapes	Unassessed											
Cultural	CL 002	Heritage Coast	Institutions	High	L	H	M	U	H	H	L	H	U		Improve promotion as a leisure destination.
	CL 007	Ewenny Quarry	Industrial	High	L	U	L	U	H	U	U	L	U		Apparently well run, with limited impact on the surroundings. Continue as now within the buffer zones identified.
	CL 028	Rural Village Conservation Areas	Institutions	Outstanding	M	H	L	M	O	H	L	L	U		Ensure designation affords protection. Continue to police designated areas.
	CL 037	Windfarm Landscape	Industrial	High	H	H	L	U	H	U	U	H	U		Unassessed
	CL 039	Vale of Glamorgan Rural Landscape	Rural	High	H	O	L	U	O	H	L	H	L		Maintain consistent planning policies to preserve the landscape.

LANDSCAPE CHARACTER AREA 3 - HERITAGE COAST INTERTIDAL ZONE

Plan



Photographs



Southerndown, to the east



Mouth of Ogmore River

Description

A long, narrow LCA extending from Ogmore by Sea eastwards to Aberthaw. It contains the exposed cliffs and wave cut platforms down to the mean low water mark together with beaches, such as Dunraven Bay and Traeth Mawr. Its' distinct feature is the exposed horizontal bedding of the limestone and shale beds that underpin the majority of the western rural Vale landscape.

Geological Landscapes

Formed by aspect area GL221, the key landscape facet is the exposed cliffs and associated wave cut platform. Its importance is recognised by its designation as a Site of Special Scientific Interest and its designation as a Heritage Coast.

Landscape Habitats

The area exhibits a range of maritime, intertidal and cliff vegetation and associated habitats (aspect area LH927).

Visual and Sensory Landscapes

The majority of the area (aspect area VS920) is formed by the intertidal zone formed by the distinctive Lias wave cut platform with a number of beaches (eg: Traeth Mawr) in between. These platforms have a highly distinctive rectilinear pattern with slightly inclined, stepped planes. These are interspersed with a mixture of rock pools, large isolated boulders and areas of rock fall. They are backed by the exposed horizontally bedding limestone and shale beds of the Heritage Coast cliffs. All of this forms a visually distinctive LCA, where the beaches remain sparsely used and providing a sense of isolation and exhilaration.

Historic and Cultural Landscapes

Culturally the LCA is associated with the designation as a Heritage Coast which is a form of statutory protection applied to sections of coastline around the UK. It also forms part of the Vale of Glamorgan littoral zone, which extends further inland but reflects the importance of the coastal landscape to the landscape character and qualities of the Vale itself.

Key Policy and Management Issues

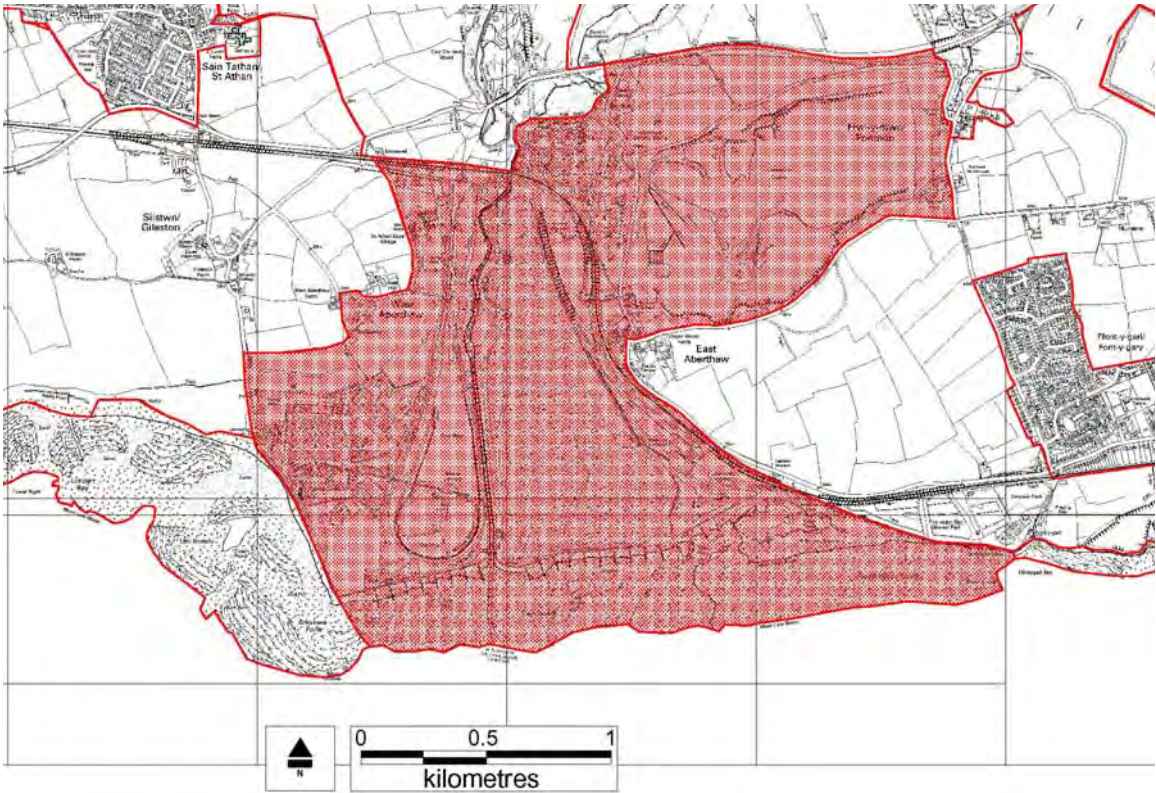
- Maintenance of the underlying qualities and features that form the basis for its designation as a Heritage Coast.
- Pressure for access by visitors using the five coastal car parks and access points, and degradation of facilities and features.
- Protection and maintenance of biodiversity features.
- Litter deposition at primary access points.

LCA 3 Heritage
Coast Intertidal
Zone

Aspect	Aspect Area	Area Name	Description	Overall Evaluation	Evaluation Criteria									Management Issues	
					1	2	3	4	5	6	7	8	9		
Geological	GL 221	Ogmore-Nash-Breaksea	Rock cliff and shore	Outstanding	O	O	O	O							Conserve existing geomorphological integrity
Landscape Habitats	LH 325	Heritage Coast	Intertidal, Including Muds/Sands, Saltmarsh, Shingle	Outstanding	O	O	U	U	U	O	O	H			Largely unmanaged apart from limited litter picking. No specific recommendations.
Visual and Sensory	VS 765	Bristol Channel	Sea	Outstanding	O	O	O	L							Maintain open sea free from development.
	VS 920	Glamorgan coast intertidal	Intertidal	Outstanding	O	O	O	O							Management of coastal area more positive in heritage area. Protect natural forms and manage access.
Historical Landscapes	HL 001	Vale of Glamorgan coastal littoral	Marginal Land	Unassessed											
Cultural	CL 002	Heritage Coast	Institutions	High	L	H	M	U	H	H	L	H	U		Improve promotion as a leisure destination.

LANDSCAPE CHARACTER AREA 4 - THAW ESTUARY

Plan



Photographs



View to Aberthaw Power Station

Description

Area of wave cut platform and estuarine deposits associated with the River Thaw which drains the central Vale landscape and is associated with the Thaw and Waycock lowland river systems. Characterised by the locally iconic features of Aberthaw Power Station and quarry.

Geological Landscapes

Part of a lowland river system, including the lower end of the floodplain. An important estuarine fan feature (aspect area GL514) that exhibits features of coastal erosion.

Landscape Habitats

A mosaic of inland and coastal features, including a range of estuarine habitats including salt marsh and saline lagoons. In addition there are a range of manmade habitats associated with the Power Station, including extensive areas of ash deposition. An important area of salt marsh as recognised by its designation (in part) as a Site of Special Scientific Interest.

Visual and Sensory Landscapes

This part of the Thaw Valley is closely associated with the Power Station and Cement Works, and associated overhead wirescape, running up the valley floor. The area is affected by ash tips and quarrying (aspect area VS569), with areas of standing water and the estuary mouth and its intertidal zone.

Historic and Cultural Landscape

In cultural landscape terms the LCA lies within the extensive agricultural Vale aspect area (CL039). Historically (aspect area HL028), association with extractive industries and the production of power are key associations.

Key Policy and Management Issues

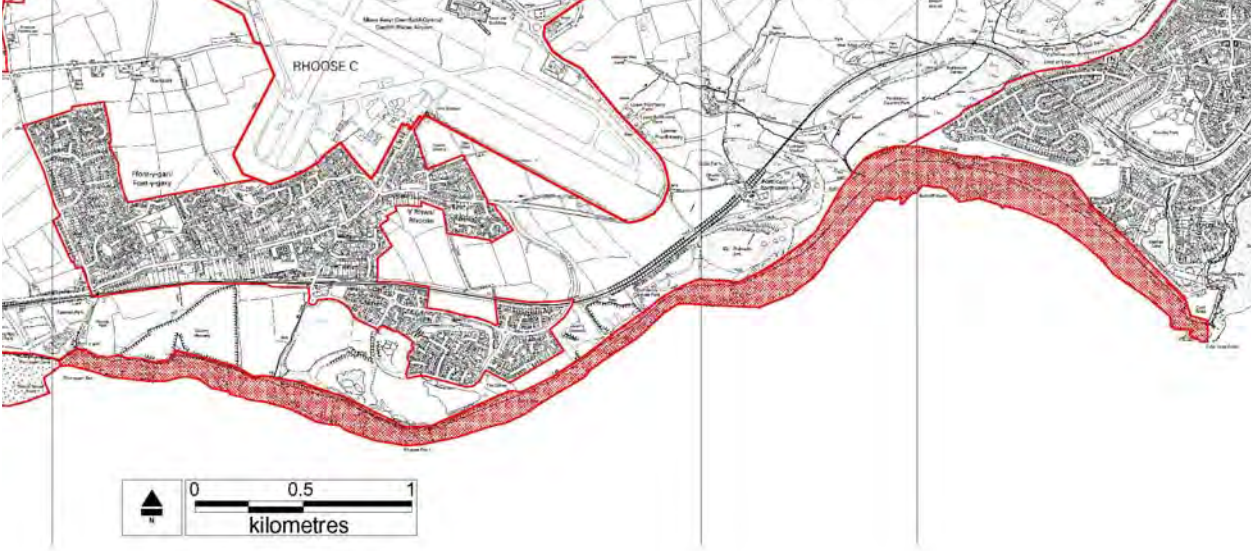
- Maintenance of SSSI area.
- Reducing grazing intensity may be beneficial in areas.
- Potential for habitat/landscape development in quarry and around the Power Station ash pits.
- Ensure any extensions or developments to industrial areas respect landscape character and quality.
- Management of public access to foreshore and protection of coast from erosion.
- Aberthaw estuary would benefit from reclamation of fringes such as river/other wet areas to improve visual quality and diversity.

LCA 4 Thaw Estuary

Aspect	Aspect Area	Area Name	Description	Overall Evaluation	Evaluation Criteria									Management Issues	
					1	2	3	4	5	6	7	8	9		
Geological	GL 514	Thaw-Waycock	Active lowland river-flood plain system	Moderate	M	L	L	L							Conserve existing geomorphological integrity
	GL 863	Llanwit-St. Athan	Lowland plateau	Moderate	M	M	M	M							Conserve existing geomorphological integrity
	GL 962	Barry-Rhoose	Lowland plateau	High	H	M	M	M							Conserve existing geomorphological integrity
Landscape Habitats	LH 325	Heritage Coast	Intertidal, Including Muds/Sands, Saltmarsh, Shingle[Trimmed]	Outstanding	O	O	U	U	U	O	O	H			Largely unmanaged apart from limited litter picking. No specific recommendations.
	LH 350	Lower Thaw Valley	Mosaic	High	H	H	M	U	L	H	H	U			The aspect area appears to suffer from heavy grazing. A reduction in grazing intensity may be beneficial.
	LH 839	Aberthaw	Mosaic	Moderate	M	M	U	U	U	U	M	M			Unassessed
	LH 845	Aberthaw Saltmarsh	Mosaic	Outstanding	O	O	U	U	U	U	O	H			Unassessed
	LH 938	The Leys	Artificial Exposures & Waste Tips	Low	L	L	M	U	U	L	L	U			Existing management generally appropriate.
Visual and Sensory	VS 305	Lower Thaw valley floor	Open Lowland Valleys	Moderate	M	M	H	M							Hedgerows deteriorating and power lines unsightly. Improve hedgerows and access.
	VS 317	Barry to Aberthaw cliffs	Cliffs & Cliff Tops	High	H	M	H	M							Development has an adverse effect on area and paths. Restrict development and improve countryside management.
	VS 569	Aberthaw estuary	Derelict/Waste Ground	Low	L	L	L	M							Canalised river and seeding in parts mean area lacks visual interest. Carry out permanent reclamation of fringes of site such as river and other wet areas to improve visual diversity and quality.
	VS 641	Rhoose Hinterland	Mosaic Rolling Lowland	Moderate	M	M	M	M							Hedgerows in decline. Improve field boundary management
	VS 742	Aberthaw Quarry	Excavation	Low	L	L	M	M							Generally works and quarry screened as far as possible. Maintain and improve screening and ensure reclamation is appropriate.
	VS 765	Bristol Channel	Sea	Outstanding	O	O	O	L							Maintain open sea free from development and maintain gravel banks to protect coastline from erosion.
	VS 890	Heritage Coast Hinterland	Open Rolling Lowland	Outstanding	O	H	O	H							Some erosion of character through development. Manage area as Heritage Coast strongly restricting development.
	VS 920	Glamorgan coast intertidal	Intertidal	Outstanding	O	O	O	O							Management of coastal area more positive in heritage area. Protect natural forms and manage access.
	VS 998	Thaw Power Station	Urban	High	L	L	H	M							Well maintained power station building and landscape. Integrate buildings, car parking areas and pedestrian areas.
Historical Landscapes	HL 001	Vale of Glamorgan coastal littoral	Marginal Land	Unassessed											
	HL 028	Aberthaw Industrial	Extractive	Unassessed											
	HL 030	Porthkerry Rural	Regular Fieldscapes	Unassessed											
	HL 036	St Donat's, Monknash and St Brides Major	Regular Fieldscapes	Unassessed											
Cultural	CL 003	W Aberthaw Power Station, Cement Works	Industrial	Outstanding	H	H	U	U	H	U	U	U	O		Apparently well maintained as befits large industrial area.
	CL 039	Vale of Glamorgan Rural Landscape	Rural	High	H	O	L	U	O	H	L	H	L		Maintain consistent planning policies to preserve the landscape.

LANDSCAPE CHARACTER AREA 5 - FONTYGARY BAY - PORKHERRY INTERTIDAL ZONE

Plan



Photographs



View from Porthkerry towards Bullcluiff rocks

Description

A small, narrow LCA including the foreshore and backdrop of exposed cliffs running from Fontygary Bay to Porthkerry.

Geological Landscapes

A continuation of the wave cut platform and exposed cliffs of limestone and shale on a small section of coast between Aberthaw and the Barry urban area and docks. The majority of the foreshore is shingle eg: Dams Bay. (Aspect area GL449).

Landscape Habitats

A range of coastal, maritime and rocky habitats associated with the exposed cliffs and foreshore area.

Visual and Sensory Landscapes

A linear area exhibiting many of the characteristics found west of Aberthaw along the Heritage Coast. Exposed cliff faces, rocky foreshore and shingle beaches (aspect area VS920).

Historic and Cultural Landscape

Within the wider agricultural Vale classification which establishes the cultural landscape context.

Key Policy and Management Issues

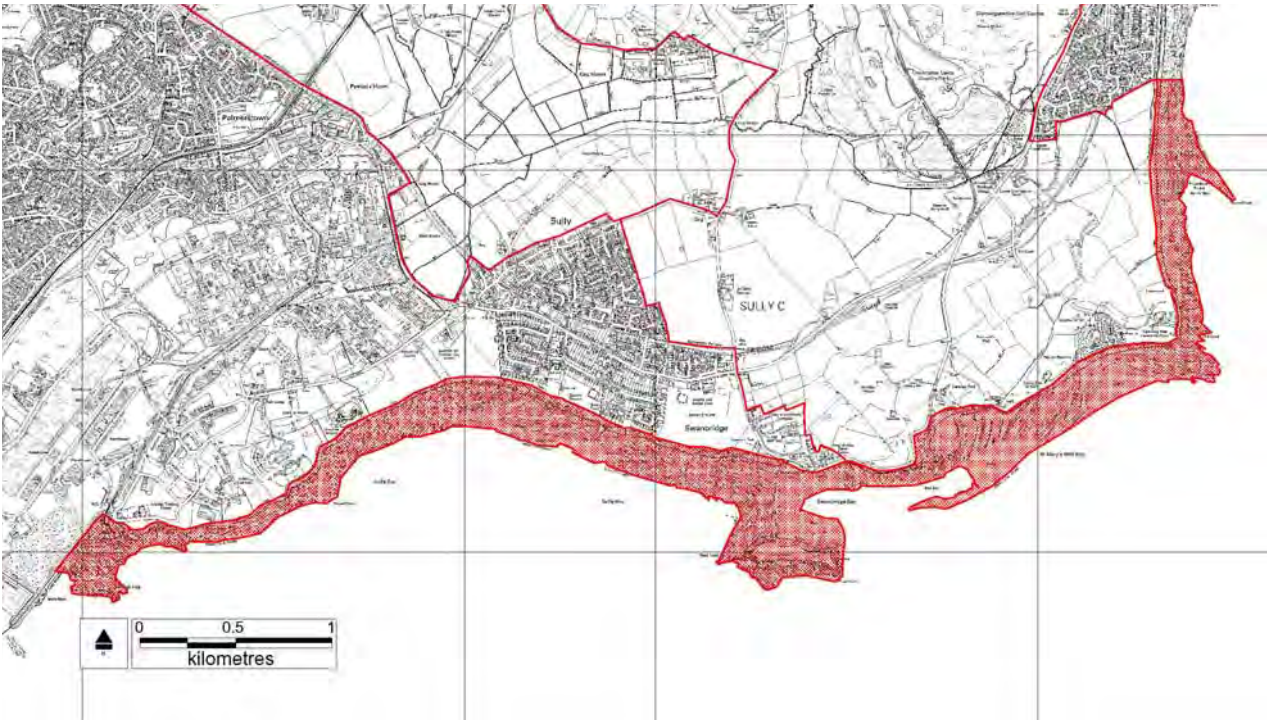
- Management of public access along the coastal edge and onto the foreshore.
- Litter management.
- Development has an adverse effect on some areas and paths. Restrict development to planned boundaries.

**LCA 5 Fontygary
Bay - Porthkerry
Intertidal Zone**

Aspect	Aspect Area	Area Name	Description	Overall Evaluation	Evaluation Criteria									Management Issues	
					1	2	3	4	5	6	7	8	9		
Geological	GL 447	Barry Island	Other	Outstanding	O	O	O	O							Conserve existing geomorphological integrity
	GL 449	Rhose Point-Portkerry	Rock cliff and shore	High	H	H	M	H							Conserve existing geomorphological integrity
	GL 962	Barry-Rhose	Lowland plateau	High	H	M	M	M							Conserve existing geomorphological integrity
Landscape Habitats	LH 270	Porthkerry	Mosaic	High	H	M	M	U	L	H	H	M			Existing management generally appropriate.
	LH 325	Heritage Coast	Intertidal, Including Muds/Sands, Saltmarsh, Shingle	Outstanding	O	O	U	U	U	O	O	H			Largely unmanaged apart from limited litter picking. No specific recommendations.
Visual and Sensory	VS 317	Barry to Aberthaw cliffs	Cliffs & Cliff Tops	High	H	M	H	M							Development has an adverse effect on area and paths. Restrict development and improve countryside management.
	VS 920	Glamorgan coast intertidal	Intertidal	Outstanding	O	O	O	O							Management of coastal area more positive in heritage area. Protect natural forms and manage access.
Historical Landscapes	HL 001	Vale of Glamorgan coastal littoral	Marginal Land	Unassessed											
	HL 003	Porthkerry Country Park	Woodland	Unassessed											
Cultural	CL 038	Rhose & Fontygary Leisure Park	Urban	High	M	H	H	U	H	U	L	M	L		Restrict development to planned boundaries.

LANDSCAPE CHARACTER AREA 6 - BARRY TO PENARTH INTERTIDAL ZONE

Plan



Photographs



Intertidal zone at Swanbridge

Description

A further narrow area of coastal landscape between the mean low water mark and cliff tops. A mixture of wave cut platforms (Sully Bay) and areas of sandy beach (St Marys Well Bay), together with the uplifted outcrop of Sully Island.

Geological Landscape

An area of exposed cliffs and rocky foreshore, with intervening sandy beaches. Cliff composed of conglomerate rock giving a different pattern of erosion and colour.

Landscape Habitats

A mosaic of coastal, maritime and rocky habitats typical of the area.

Visual and Sensory Landscapes

Less isolated stretch of coastline, with views westwards across Barry Docks and associated industrial areas, and eastwards to Penarth and Cardiff Bay beyond. Limited access from coastal path, and the underlying conglomerate rocks give a less structured, dull red appearance to the exposed cliff areas.

Historic and Cultural Landscapes

Part of the wider agricultural Vale landscape and cultural zone which recognises the importance of the coastline to the Vale landscape.

Key Policy and Management Issues

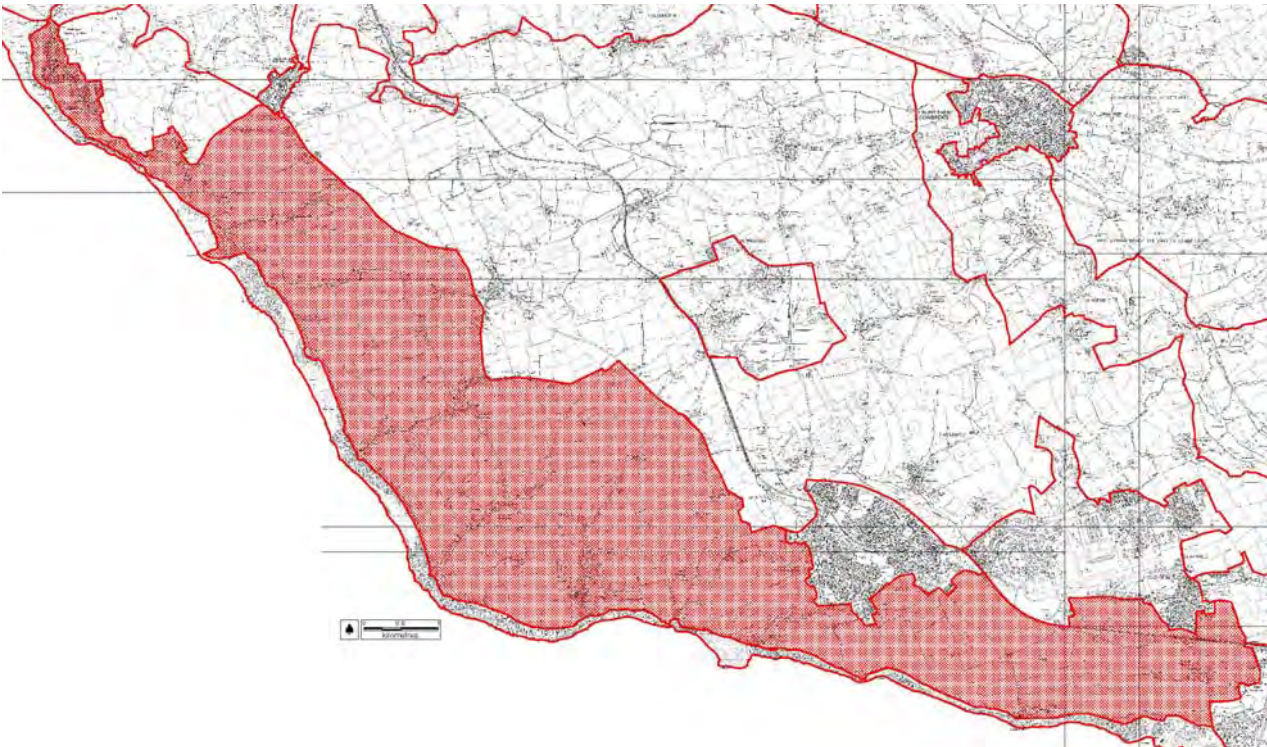
- Management of public access along coastal ridge and foreshore. Closer to built up areas of Barry and Penarth which adds to the pressure.
- Development has an adverse effect on areas and paths.
- Litter management.

LCA 6 Barry to Penarth Intertidal Zone

Aspect	Aspect Area	Area Name	Description	Overall Evaluation	Evaluation Criteria									Management Issues	
					1	2	3	4	5	6	7	8	9		
Geological	GL 238	Penarth	Lowland escarpment	Moderate	L	L	M	L							Conserve existing geomorphological integrity
	GL 642	Sully-Lavernock-Penarth	Rock cliff and shore	Outstanding	O	O	O	O							Conserve existing geomorphological integrity
	GL 955	Sully	Undulating lowland hill terrain	Moderate	L	L	M	L							Conserve existing geomorphological integrity
Landscape Habitats	LH 634	Penarth Coastline	Intertidal, Including Muds/Sands, Saltmarsh, Shingle.	Outstanding	O	H	U	U	M	O	O	U			Unassessed
Visual and Sensory	VS 308	Penarth to Swanbridge cliffs	Cliffs & Cliff Tops	High	H	M	H	H							Development has an adverse effect on area and paths. Restrict development and improve countryside management.
	VS 444	Swanbridge to Barry Coast	Other Coastal Wild Land	High	H	M	H	H							Poor development adjacent and poor access management. Improve development control.
	VS 920	Glamorgan coast intertidal	Intertidal	Outstanding	O	O	O	O							Management of coastal area more positive in heritage area. Protect natural forms and manage access.
Historical Landscapes	HL 001	Vale of Glamorgan coastal littoral	Marginal Land	Unassessed											
Cultural	CL 039	Vale of Glamorgan Rural Landscape	Rural	High	H	O	L	U	O	H	L	H	L		Maintain consistent planning policies to preserve the landscape.

LANDSCAPE CHARACTER AREA 7 - HERITAGE COAST HINTERLAND

Plan



Photographs



Coastal hinterland near St Donats



Windblown vegetation near St Donats

Description

An area of broad, low dissected plateau between the cliff top (LCA 3) and running inland to a line approximately to the B4265 road. Essentially part of the western Vale plateau that exhibits a coastal influence in terms of windblown vegetation, sense of exposure and glimpses down into the Bristol Channel and beyond across to Exmoor and Somerset.

Geological Landscapes

An area of dissected plateau (aspect area GL863) with a series of small truncated valleys with associated small streams eg: Pant y Slade, Pant Llawn-dwr, Cwm Nash and Cwm Macroes.

Landscape Habitats

A mosaic of lowland landscape habitats, grassland, woodland, small streams, ditches and hedgerows (aspect area LH908). The main areas of woodland are associated with the series of small valleys that dissect the plateau eg: Cwm Mawr, St Donats.

Visual and Sensory Landscapes

Part of a wider area of rolling, lowland plateau, exhibiting the visual and sensory characteristic of a coastal edge location. A mixture of medium to large fields, often bounded by well managed hedgerows. Some local variations such as at Southerndown, where stone walls are used to bound the fields. The sense of a coastal landscape with windblown vegetation, exposure and views of the sea.

Historic and Cultural Landscapes

Part of the larger southern Vale agricultural landscape (aspect area HL036) which includes a number of small nucleated villages eg: St Bridges Major, St Donats and Monknash. Includes Dunraven Park, which is included on the Register of Landscapes, Parks and Gardens of Special Historic Interest in Wales, which itself includes the Dunraven Castle hill fort on Witches Point which is a Scheduled Ancient Monument, and is also the site of the Heritage Coast Visitor centre. It also includes the majority of the Heritage Coast designated area.

Key Policy and Management Issues

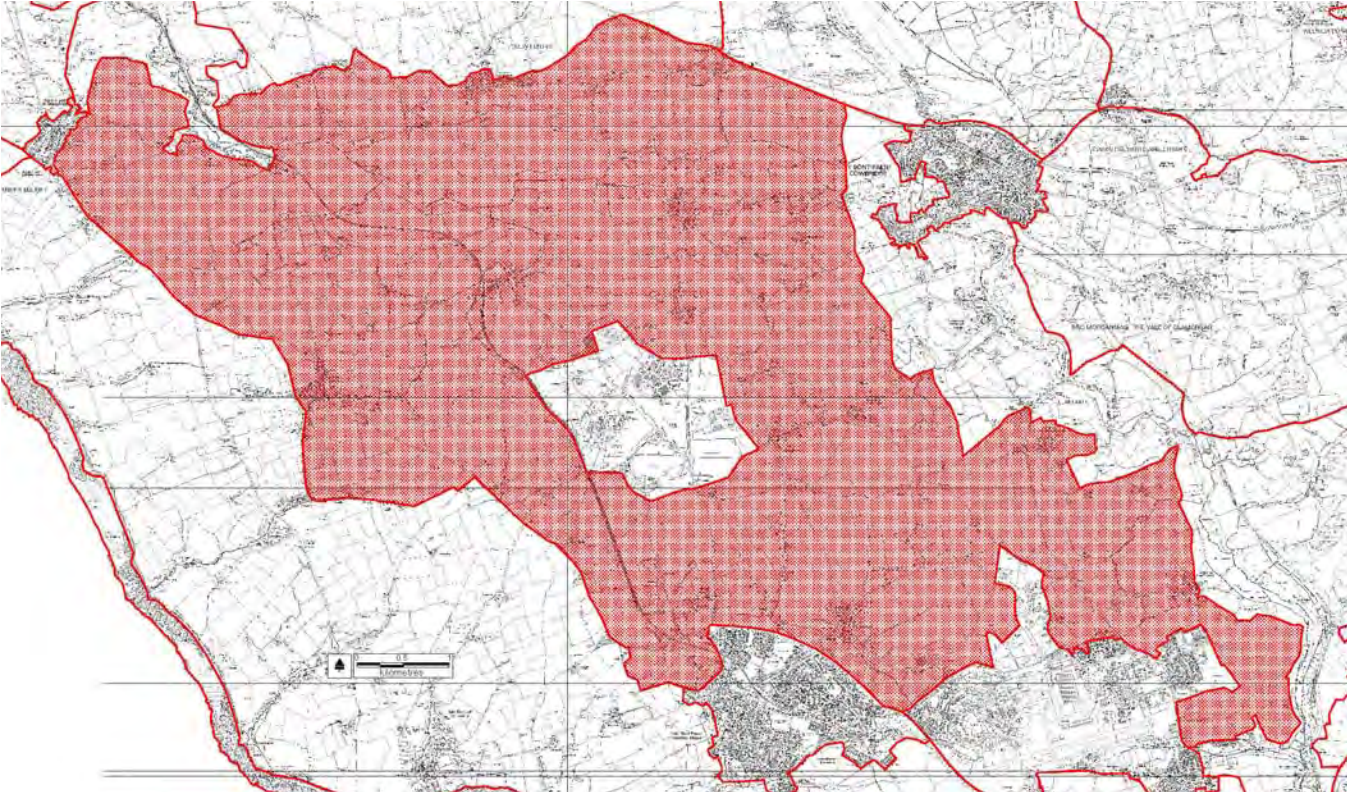
- Management of field boundaries to retain integrity of the agricultural landscape.
- Management of woodlands in the distinctive truncated valleys.
- Intensive farming reducing interest in the landscape.
- Management of parking and access to the coast.
- Protection of the designated Heritage Coast landscape.
- Erosion of character through development.

LCA 7 Heritage
Coast Hinterland

Aspect	Aspect Area	Area Name	Description	Overall Evaluation	Evaluation Criteria									Management Issues	
					1	2	3	4	5	6	7	8	9		
Geological	GL 514	Thaw-Waycock	Active lowland river-flood plain system	Moderate	M	L	L	L							Conserve existing geomorphological integrity
	GL 747	Ogmore-St. Brides	Other	Outstanding	H	O	O	O							Conserve existing geomorphological integrity
	GL 863	Llanwit-St. Athan	Lowland plateau	Moderate	M	M	M	M							Conserve existing geomorphological integrity
Landscape Habitats	LH 523	Coastal grasslands & Cwms	Mosaic	Outstanding	O	O	U	U	U	H	O	O			Ensure coastal grasslands are managed appropriately.
	LH 582	Ogmore-Llantwit Arable Belt	Mosaic	Moderate	M	L	M	U	L	M	L	H			The provision of set aside buffer strips at the edges of the arable fields and sympathetic management of field boundaries would increase biodiversity interest.
	LH 839	Aberthaw	Mosaic	Moderate	M	M	U	U	U	U	M	M			Unassessed
	LH 897	Boverton	Arable	Outstanding	M	M	H	U	L	U	M	M			Sympathetic management to encourage biodiversity interest at the margins of cereal crops would be beneficial.
Visual and Sensory	VS 805	Lias Plateau	Open Rolling Lowland	Moderate	M	M	M	U							Intensive farming reducing interest in landscape. Introduce cover and interest into landscape.
	VS 890	Heritage Coast Hinterland	Open Rolling Lowland	Outstanding	O	H	O	H							Some erosion of character through development. Manage area as Heritage Coast strongly restricting development.
Historical Landscapes	HL 002	Southern Vale Communication Corridor	Communications	Unassessed											
	HL 034	Ogmore Down	Marginal Land	Unassessed											
	HL 035	Ogmore by Sea	Nucleated Settlement	Unassessed											
	HL 036	St Donat's, Monknash and St Brides Major	Regular Fieldscapes	Unassessed											
	HL 037	St Donats Castle	Nucleated Settlement	Unassessed											
	HL 052	Llysworney and Llandough	Regular Fieldscapes	Unassessed											
	HL 058	Dunraven Park	Designed Parkland/Garden	Unassessed											
Cultural	CL 002	Heritage Coast	Institutions	High	L	H	M	U	H	H	L	H	U		Improve promotion as a leisure destination.
	CL 005	St Donats and Atlantic College	Institutions	Outstanding	H	H	O	U	H	H	L	L	H		Both the College and the Arts Centre are well maintained.
	CL 006	Llantwit Major	Places	High	H	H	H	O	H	H	H	H	H		The essence of the place has already been compromised by inappropriate and unattractive development; care should be taken - if further development is to be allowed - to strive for appropriate aesthetic qualities compatible with the essence of the place in the form of mass, materials and siting
	CL 025	Ogmore-by-Sea	Customs	Moderate	M	U	U	U	U	U	U	U	M		Invest in physical fabric maintenance.
	CL 028	Rural Village Conservation Areas	Institutions	Outstanding	M	H	L	M	O	H	L	L	U		Ensure designation affords protection. Continue to police designated areas.
	CL 036	Dunraven Park & Bay	Customs	Low	L	M	L	U	L	U	U	L	L		Maintain a low-key management style.
	CL 039	Vale of Glamorgan Rural Landscape	Rural	High	H	O	L	U	O	H	L	H	L		Maintain consistent planning policies to preserve the landscape.

LANDSCAPE CHARACTER AREA 8 - LIAS PLATEAU

Plan



Photographs



View across the Lias Plateau from the A48, looking south

Description

The inland section of the west Vale plateau (see LCA 7) a broad, low dissected plateau which exhibits little visual, sensory or physical evidence of proximity to the coast. Rising up to some 90m AOD, it is bounded to the north by the Northern Vale Lias Slopes (LCA 2) and to the east by the Thaw Valley and the developed areas of St Athan and Llantwit Major. In the centre of the area is a discrete LCA relating to the Llandow Trading Estate (see LCA 9) which has been separated due to it being such an incongruous element within the surrounding rural landscape.

Geological Landscapes

Part of the low, broad, dissected plateau that forms the majority of the western Vale landscape underlain by the extensive limestone and shale beds of the Lias. It is dissected by a number of small streams such as Clemenstone Brook, Sternbridge Brook and Factory Brook that run down into the adjacent lowland valley river system of the Thaw and Ewenny.

Landscape Habitats

A fairly intensively farmed landscape, the LCA is typified by a mosaic of lowland habitats, including hedgerows, hedgerow trees, streams and ditches and scattered small blocks of woodland.

Visual and Sensory Landscapes

An open, rolling plateau with scattered farmsteads. The main settlements are Wick, Colwinston and Llysworney. These are subject to development pressures, evidenced by urban detailing in new developments near villages and inappropriate conversions at some farms. Predominantly an arable farmed landscape with a mixture of medium and large field sizes set in a matrix of hedgerows with hedgerow trees.

Historic and Cultural Landscape

In historic terms the LCA includes aspect area HL051 - Llandow Rural which reflect the agricultural development of the area, as does aspect area CL039 which is the extensive rural Vale landscape. At the eastern edge of the LCA is Llanmihangel Place which is included on the Register of Landscapes, Parks and Gardens of Special Historic Interest in Wales.

Key Policy and Management Issues

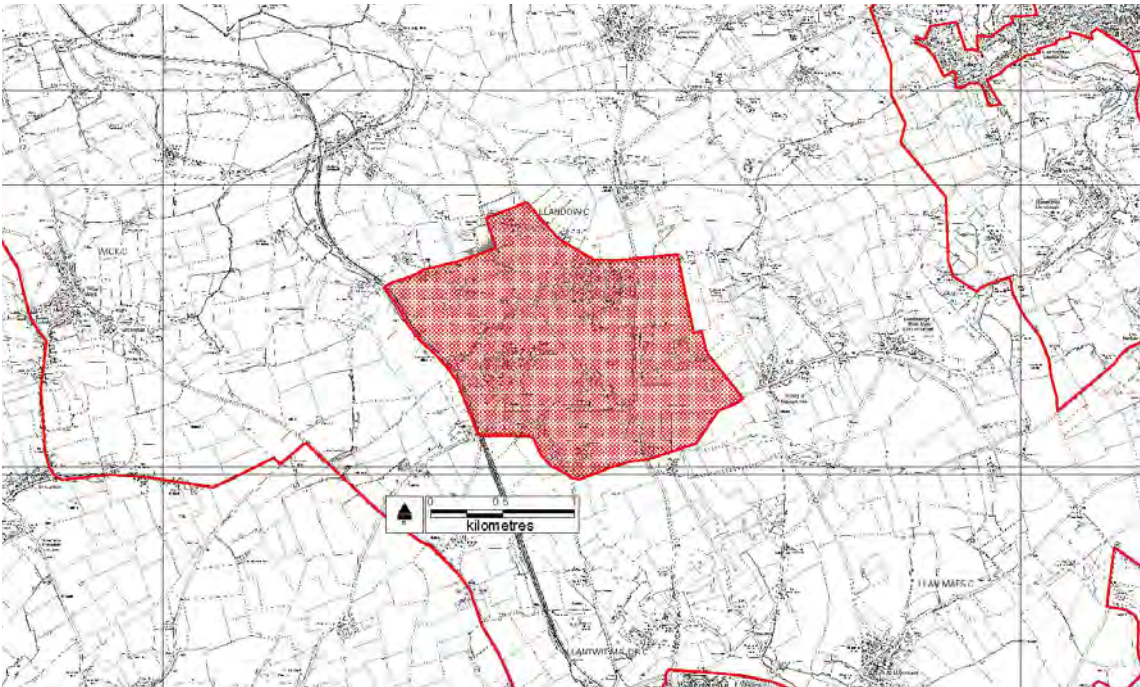
- Longer management of the agricultural landscape features to retain the integrity of the area's character, introducing cover and interest.
- Integration of new developments into the settlement edge landscape.
- Strongly restrict development by managing area as Heritage Coast.
- Management of historic landscape areas and woodlands.

LCA 8 Lias Plateau

Aspect	Aspect Area	Area Name	Description	Overall Evaluation	Evaluation Criteria									Management Issues	
					1	2	3	4	5	6	7	8	9		
Geological	GL 514	Thaw-Waycock	Active lowland river-flood plain system	Moderate	M	L	L	L							Conserve existing geomorphological integrity
	GL 747	Ogmore-St. Brides	Other	Outstanding	H	O	O	O							Conserve existing geomorphological integrity
	GL 863	Llanwit-St. Athan	Lowland plateau	Moderate	M	M	M	M							Conserve existing geomorphological integrity
	GL 885	Alun-Ewenny	Active lowland river-flood plain system	Moderate	H	L	M	M							Conserve existing geomorphological integrity
Landscape Habitats	LH 435	Cowbridge West	Improved Grassland	Moderate	M	L	H	U	L	L	M	U			Intensive agricultural management generally unsympathetic. Encourage less intensive land management practices.
	LH 582	Ogmore-Llantwit Arable Belt	Mosaic	Moderate	M	L	M	U	L	M	L	H			The provision of set aside buffer strips at the edges of the arable fields and sympathetic management of field boundaries would increase biodiversity interest.
Visual and Sensory	VS 110	Lower Thaw valley sides	Mosaic Lowland Valleys	High	H	M	H	H							Woodland management needs improving. Retain and manage wooded slopes and improve boundaries.
	VS 139	Mid Thaw Valley	Mosaic Lowland Valleys	High	H	H	H	H							Retain and manage wooded slopes and protect and improve boundaries.
	VS 805	Lias Plateau	Open Rolling Lowland	Moderate	M	M	M	M							Intensive farming reducing interest in landscape. Introduce cover and interest into landscape
	VS 890	Heritage Coast Hinterland	Open Rolling Lowland	Outstanding	O	H	O	H							Some erosion of character through development. Manage area as Heritage Coast strongly restricting development.
Historical Landscapes	HL 002	Southern Vale Communication Corridor	Communications	Unassessed											
	HL 031	RAF St Athan	Military	Unassessed											
	HL 033	RAF Llandow	Military	Unassessed											
	HL 036	St Donat's, Monknash and St Brides Major	Regular Fieldsapes	Unassessed											
	HL 041	Llamihangel Place	Nucleated Settlement	Unassessed											
	HL 046	Pwll-Y-Wrach	Nucleated Settlement	Unassessed											
	HL 049	Thaw River Valley	Water & Wetland	Unassessed											
	HL 051	Llandow Rural	Irregular Fieldsapes	Unassessed											
Cultural	CL 028	Rural Village Conservation Areas	Institutions	Outstanding	M	H	L	M	O	H	L	L	U		Ensure designation affords protection. Continue to police designated areas.
	CL 039	Vale of Glamorgan Rural Landscape	Rural	High	H	O	L	U	O	H	L	H	L		Maintain consistent planning policies to preserve the landscape.

LANDSCAPE CHARACTER AREA 9 - LLANDOW TRADING ESTATE

Plan



Photographs



Llandow Trading Estate



Llandow Racing Circuit

Description

A large area centred upon the former RAF Llandow airfield which has been developed as an extensive trading estate. It has a range of buildings of varying quality including refurbished aircraft hangers. It is also the location of a karting circuit.

Geological Landscapes

Located on the Lias plateau that forms the majority of the Western Vale landscape (aspect area GL863).

Landscape Habitats

Part of a larger aspect area (LH 908) which includes a range of lowland habitats, including areas of woodland. Much of the area has been amended by the construction of the airfield and subsequent development.

Visual and Sensory Landscape

A former Second World War airfield development as a trading estate, it forms an incongruous element within the rural Vale landscape. It has a mixture of buildings of varying quality and character and this is complemented by a variable landscape structure.

Historic and Cultural Landscapes

An important reminder of the historic associations with airfields in World War Two (aspect area HL033) with a variety of relief features and buildings including the former control tower, refurbished hangers and extensive aircraft disposal areas that remain part of the wider agricultural landscape.

Key Policy and Management Issues

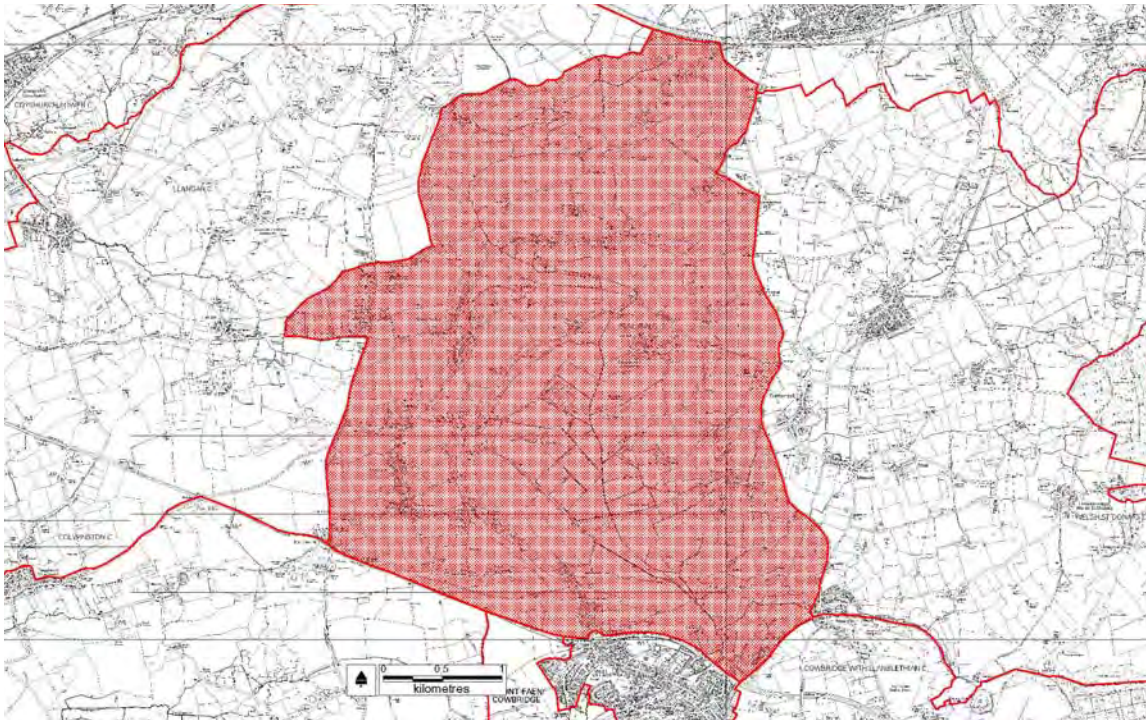
- Ensure any further developments seek to raise the quality of the built forms associated with the area.
- Plan for the financing and implementation of future infrastructure needs.
- Establish a strategic approach to landscape management to ensure a more structured approach to landscaping and ensure it is fully integrated into the surrounding landscape, increasing biodiversity.
- Ensure waste management on the estate is properly controlled to reduce litter and fly tipping.

**LCA 9 Llandow
Trading Estate**

Aspect	Aspect Area	Area Name	Description	Overall Evaluation	Evaluation Criteria									Management Issues	
					1	2	3	4	5	6	7	8	9		
Geological	GL 863	Llanwit-St. Athan	Lowland plateau	Moderate	M	M	M	M							Conserve existing geomorphological integrity
Landscape Habitats	LH 582	Ogmore-Llantwit Arable Belt	Mosaic	Moderate	M	L	M	U	L	M	L	H			The provision of set aside buffer strips at the edges of the arable fields and sympathetic management of field boundaries would increase biodiversity interest.
Visual and Sensory	VS 467	Llandow Industrial Estate	Urban	Low	L	L	M	M							Management of external areas not coordinated. Coordinated approach including native species planting.
Historical Landscapes	HL 033	RAF Llandow	Military	Unassessed											
	HL 051	Llandow Rural	Irregular Fieldsapes	Unassessed											
Cultural	CL 026	Llandow Industrial Estate	Urban	Moderate	L	H	L	U	M	M	M	U	U		Consider infrastructure needs, and plan for the financing and implementation of provision
	CL 027	Llandow Car Racing Circuit	Customs	High	L	H	H	O	U	U	U	U	U		

LANDSCAPE CHARACTER AREA 10 - UPPER THAW VALLEY

Plan



Photographs



From City, to north



From City, to south

Description

The area of the Thaw Valley, including the valley floor and associated valley sides that stretches up from Cowbridge up to the northern boundary of the unitary authority area, which largely follows the M4 motorway. A broad, open lowland valley characterised by large fields and in places a rectilinear pattern of drainage ditches (Penllyn Moor). A mosaic of lowland valley habitats - grassland, arable farmland, lowland meadows and drainage ditches. The steep valley sides are largely clothed in primarily deciduous areas of mixed woodland.

Geological Landscapes

The upper part of an active lowland river valley system that runs across the centre of the Vale, cutting into the lowland plateau. This has resulted in steep valley sides.

Landscape Habitats

The LCA predominantly consists of improved agricultural grassland of limited biodiversity interest, with pockets of biodiversity value associated with semi-natural broadleaf woodlands, some within LH394 being listed under the Ancient Woodland Inventory, and marshy grasslands near Aberthin.

Visual and Sensory Landscapes

An open lowland valley (aspect area VS864) with a relatively wide, sinuous valley floor. This has extensive areas of rectilinear drainage ditches (Penllyn Moor). There are a number of scattered farmsteads and a few small settlements such as Graig Penllyn, Penllyn and Llansanmor. The valley sides (aspect area VS933) reflect a break of slope into the Lias plateau and northern Vale Lias. They are largely wooded (Coed Breigam, Coed y Graig, Coed y Stanby, Coed y Brain and the slopes at Isycoed and City) which provide a distinctive landscape type within this LCA, and together with the open valley floor give a dramatic sense of landscape form and character.

Historic and Cultural Landscape

The area around Llansanmor and Penllyn Moors are an important example of reclaimed wet valley floors (aspect area HL042). There are a number of relief earthworks, such as north of St Mary Hill and Tan y Lan.

Key Policy and Management Issues

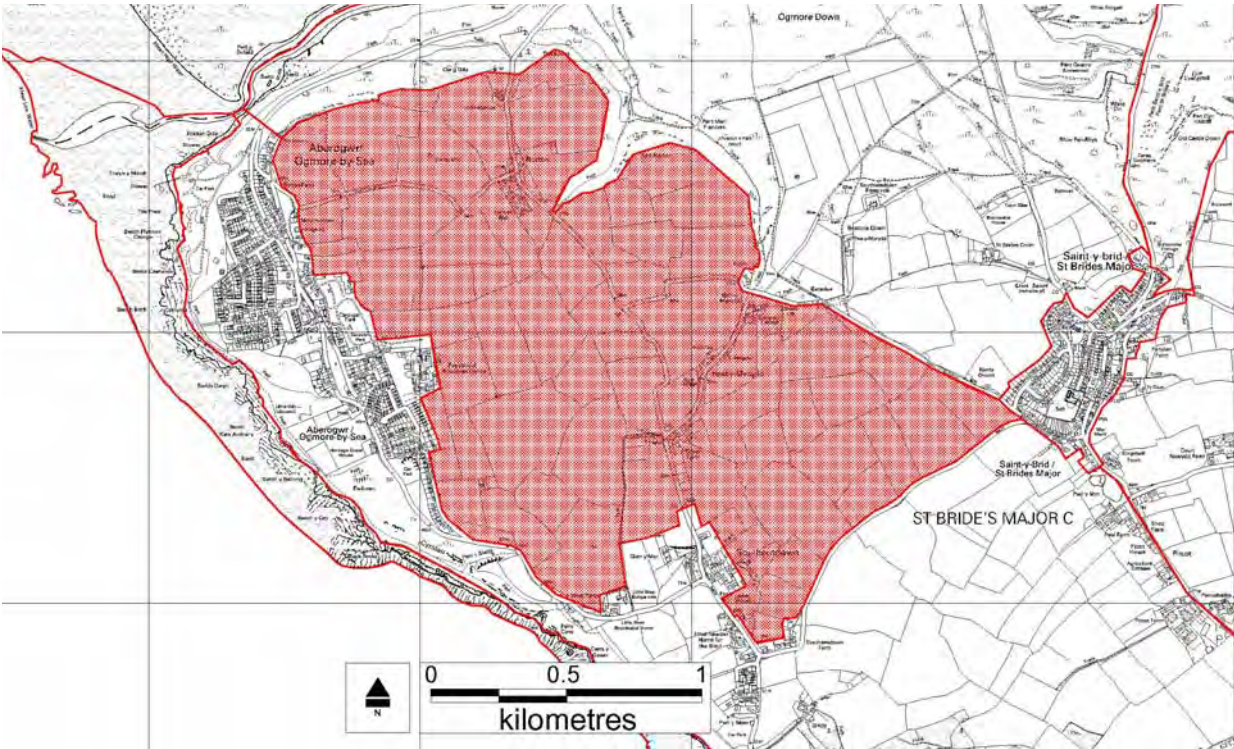
- Ensure any developments are properly integrated into the wider landscape.
- Longer term management of the valley side woods which provide one of the most distinctive features of the LCA.
- Maintenance of the integrity of the wider agricultural landscape, such as boundary management, drainage ditches and hedgerow vegetation.
- Encourage less intensive land management practices.
- Encourage selective planting to improve connectivity.

LCA 10 Upper Thaw Valley

Aspect	Aspect Area	Area Name	Description	Overall Evaluation	Evaluation Criteria									Management Issues	
					1	2	3	4	5	6	7	8	9		
Geological	GL 298	Argoed	Other	Moderate	H	M	H	M							Conserve existing geomorphological integrity
	GL 492	Ewenny-Penllyn	Other	Outstanding	O	O	O	O							Conserve existing geomorphological integrity
	GL 532	Pendoylan	Lowland till plain / field	High	H	M	M	M							Conserve existing geomorphological integrity
	GL 658	Penllyn Moor	Active lowland river-flood plain system	High	H	M	M	M							Conserve existing geomorphological integrity
Landscape Habitats	LH 118	Cowbridge East	Mosaic	Moderate	L	L	H	U	L	M	M	H			Less intensive agricultural management.
	LH 394	Ruthin	Mosaic	High	H	M	U	U	U	M	H	U			Sympathetic management of field boundaries.
	LH 435	Cowbridge West	Improved Grassland	Moderate	M	L	H	U	L	L	M	U			Intensive agricultural management generally unsympathetic. Encourage less intensive land management practices.
	LH 782	Thaw Valley Woodlands	Mosaic	High	H	H	U	U	U	H	H	U			Encourage selective planting to improve connectivity.
	LH 808	Thaw Valley	Improved Grassland	Moderate	H	H	U	U	H	M	M	H			Remaining areas of marshy grassland should be safeguarded.
Visual and Sensory	VS 161	Cowbridge	Urban	Moderate	M	M	M	M							Town is well maintained and economically vibrant. Maintain integrity of core. Maintain green wedges.
	VS 805	Lias Plateau	Open Rolling Lowland	Moderate	M	M	M	M							Intensive farming reducing interest in landscape. Introduce cover and interest into landscape.
	VS 864	Thaw Valley Flood Plain	Open Lowland Valleys	High	M	M	H	M							Hedgerows deteriorating and few trees. Maintain/improve hedgerows and trees with drainage ditches.
	VS 933	Upper Thaw Valley	Mosaic Lowland Valleys	High	H	M	H	H							Woodland management needs improving. Retain and manage wooded slopes and improve boundaries.
	VS 943	Northern Vale Lias Slopes	Open Rolling Lowland	Moderate	M	M	M	M							Declining trees and hedgerows in the landscape. Improve tree cover.
	VS 962	Ystradowen/Hensol area	Mosaic Lowland Valleys	Moderate	H	M	M	M							Improve woodland, tree, hedgerow cover and stream conditions.
Historical Landscapes	HL 022	A48 Lougher to Chepstow communication co	Communications	Unassessed											
	HL 042	Llansannor and Penllyn Moors	Regular Fieldscapes	Unassessed											
	HL 053	Ystradowen	Irregular Fieldscapes	Unassessed											
	HL 054	Llangan Welsh St Donats and Pendoylan	Regular Fieldscapes	Unassessed											
Cultural	CL 020	Communications: A48	Infrastructure	High	H	H	L	O	H	U	M	U	U		Prepare long-term plans for the management of the infrastructure.
	CL 037	Windfarm Landscape	Industrial	High	H	H	L	U	H	U	U	H	U		n/a
	CL 039	Vale of Glamorgan Rural Landscape	Rural	High	H	O	L	U	O	H	L	H	L		Maintain consistent planning policies to preserve the landscape.

LANDSCAPE CHARACTER AREA 11 - NORTON DOWN

Plan



Photographs



Norton Down

Description

A small, upstanding area behind Ogmore by Sea at the western edge of the Vale. Intensively farmed, the area has distinct patterns of fields bounded by closely trimmed hedgebanks. There are very few trees and woodlands which emphasise the open, exposed nature of the area.

Geological Landscapes

Part of a broad ridge of limestone that forms the eastern boundary of the Ewenny valley.

Landscape Habitats

Mixture of lowland agricultural landscapes reflecting the predominant arable nature of the LCA. Distinctive trimmed field boundaries of hedgerows and hedgebanks.

Visual and Sensory Landscapes

Part of a wider aspect area which covers the adjacent Heritage Coast hinterland (see LCA 7). It forms an area of open plateau running up to some 90m AOD. Open, exposed, somewhat bleak in places, it forms a distinctive LCA.

Historic and Cultural Landscapes

Its historic landscape development reflects the wider agricultural history of the southern Vale (aspect area HL036) and it lies within the designated area for the Heritage Coast (aspect area CL02).

Key Policy and Management Issues

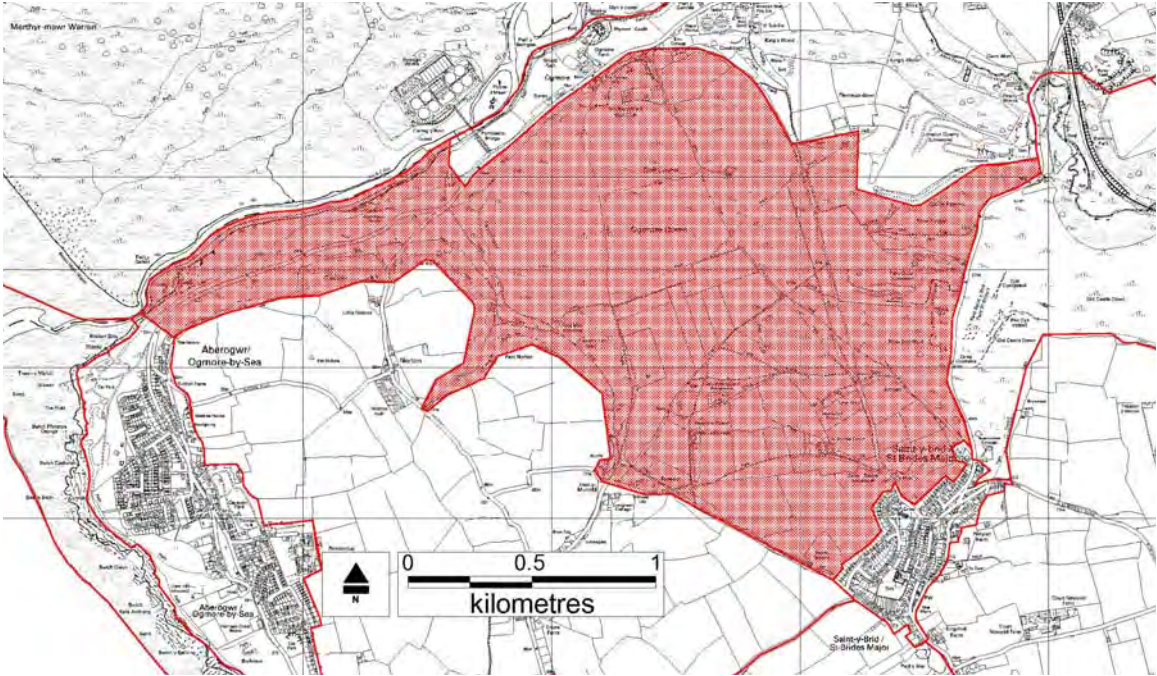
- Ensure that the distinctive pattern of field boundaries is maintained and ensure any gappy areas are replaced.
- Scope to increase habitat diversity along field margins and road verges.
- Management as Heritage Coast to strongly restrict development to prevent erosion of character.
- Investment in physical fabric should be considered where appropriate.

LCA 11 Norton
Down

Aspect	Aspect Area	Area Name	Description	Overall Evaluation	Evaluation Criteria									Management Issues	
					1	2	3	4	5	6	7	8	9		
Geological	GL 747	Ogmore-St. Brides	Other	Outstanding	H	O	O	O							Conserve existing geomorphological integrity
Landscape Habitats	LH 582	Ogmore-Llantwit Arable Belt	Mosaic	Moderate	M	L	M	U	L	M	L	H			The provision of set aside buffer strips at the edges of the arable fields and sympathetic management of field boundaries would increase biodiversity interest.
	LH 659	Old Castle Down	Mosaic	Outstanding	O	O	U	U	U	U	O	O			Grazing and selective management of vegetation to encourage biodiversity interest. Management of vegetation to discourage uncontrolled fires.
Visual and Sensory	VS 663	Ogmore and Old Castle Downs	Open Rolling Lowland	Outstanding	O	M	O	H							Minimal management intervention except golf course. Optimise semi-natural vegetation.
	VS 890	Heritage Coast Hinterland	Open Rolling Lowland	Outstanding	O	H	O	H							Some erosion of character through development. Manage area as Heritage Coast strongly restricting development.
Historical Landscapes	HL 034	Ogmore Down	Marginal Land	Unassessed											
	HL 036	St Donat's, Monknash and St Brides Major	Regular Fieldscapes	Unassessed											
Cultural	CL 002	Heritage Coast	Institutions	High	L	H	M	U	H	H	L	H	U		Improve promotion as a leisure destination.
	CL 025	Ogmore-by-Sea	Customs	Moderate	M	U	U	U	U	U	U	U	U		Invest in physical fabric. Unitary Authority to consider whether Ogmore-by-Sea is suitable for or worthy of development and promotion.

LANDSCAPE CHARACTER AREA 12 - OGMORE DOWN

Plan



Photographs



Southerndown Golf Club course

Description

An area of heathland which also includes a Golf Clubhouse and course on an elevated ridge line abutting the Ewenny valley. Its key feature is that notwithstanding the presence of the golf course it remains the largest area of heath in the Vale area.

Geological Landscapes

Part of a broad ridge of limestone (aspect area GL747) found in the western Vale. Its southern boundary is formed by a grouping of small, steeply sided dissecting valleys - Pant Norton, Pant Mari Flanders and Pany y Cwteri that run down with the Ewenny Valley.

Landscape Habitats

The LCA is characterised by extensive areas of lowland heath, formed by a mosaic of dry heath and acid grassland (aspect area LH100). The area is of high nature conservation value as identified in the LBAP. In addition to the heathland habitats, there are areas of less important grasslands associated with the golf course.

Visual and Sensory Landscapes

An area of open rolling heathland, rising up to 100m AOD. Visually dominated by the golf clubhouse and the associated parking area, and Pont Alun quarry on its eastern edge, where the ridge is dissected by the steeply sloped Pant St Bridge valley. In certain locations the artificial nature of the golf fairways and greens dominate the view, but its presence contributes to the retention of the heathland. The area has a sense of openness and exposure, and its tranquillity is affected by quarry vehicles.

Historic and Cultural Landscapes

Ogmore Downs (aspect area HL034) is the last significant area of unenclosed heath within the Vale. It is also related to the Heritage Coast designation.

Key Policy and Management Issues

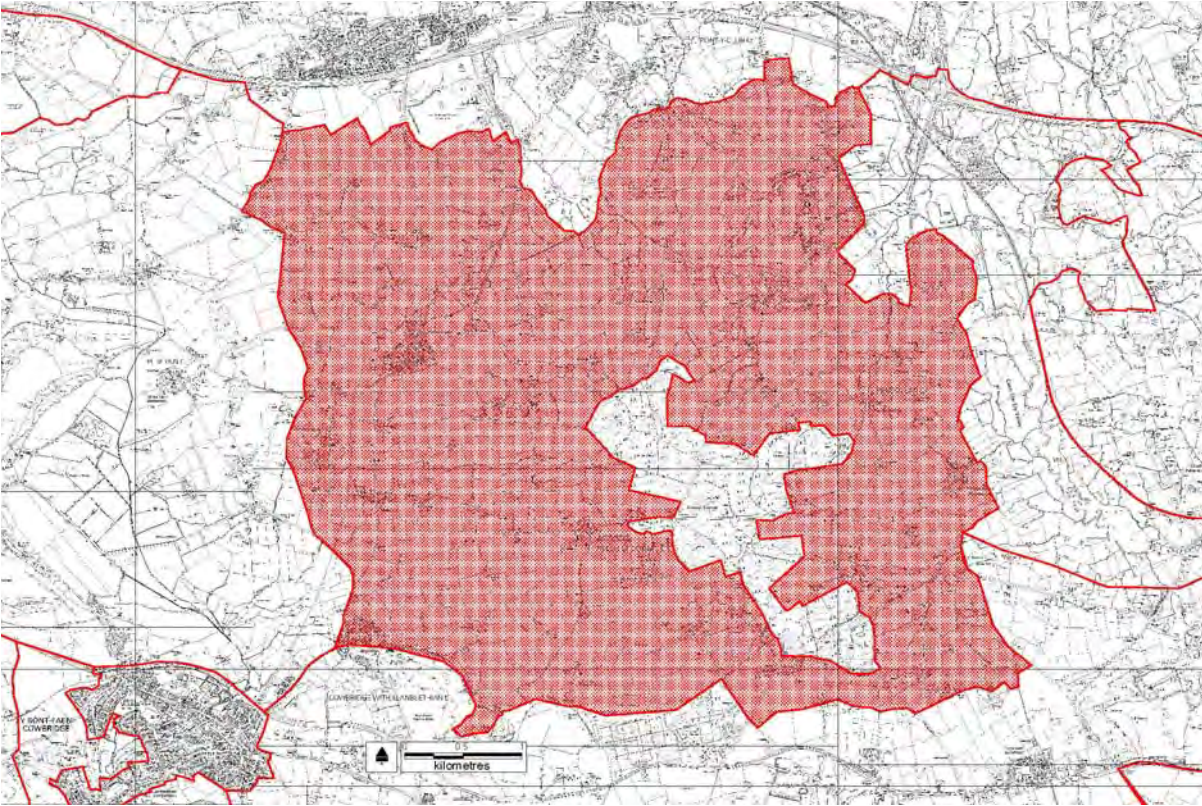
- Ensure that the heathland matrix is maintained and where possible enhanced.
- Ensure any developments respect the open form and character of the landscape.
- Effect of public access on the quality of the heathland.
- Reduce sheep grazing intensity on saltmarsh and general intensive farming practices elsewhere.
- Use of designation as a means to control management and development.

LCA 12 Ogmore Down

Aspect	Aspect Area	Area Name	Description	Overall Evaluation	Evaluation Criteria									Management Issues	
					1	2	3	4	5	6	7	8	9		
Geological	GL 275	Ogmore Down	Sand dune	Moderate	L	L	M	L							Conserve existing geomorphological integrity
	GL 747	Ogmore-St. Brides	Other	Outstanding	H	O	O	O							Conserve existing geomorphological integrity
Landscape Habitats	LH 385	Cwm Alun	Mosaic	Outstanding	H	H	U	U	U	M	H	O			Unassessed
	LH 481	Afon Ogwr	Mosaic	High	H	H	U	U	M	M	H	U			The saltmarsh is too heavily grazed by sheep at present. A reduction in grazing intensity would be beneficial.
	LH 582	Ogmore-Llantwit Arable Belt	Mosaic	Moderate	M	L	M	U	L	M	L	H			The provision of set aside buffer strips at the edges of the arable fields and sympathetic management of field boundaries would increase biodiversity interest.
	LH 659	Old Castle Down	Mosaic	Outstanding	O	O	U	U	U	U	O	O			Grazing and selective management of vegetation to encourage biodiversity interest. Management of vegetation to discourage uncontrolled fires.
Visual and Sensory	VS 663	Ogmore and Old Castle Downs	Open Rolling Lowland	Outstanding	O	M	O	H							Minimal management intervention except golf course. Optimise semi-natural vegetation.
	VS 805	Lias Plateau	Open Rolling Lowland	Moderate	M	M	M	M							Intensive farming reducing interest in landscape. Introduce cover and interest into landscape.
	VS 890	Heritage Coast Hinterland	Open Rolling Lowland	Outstanding	O	H	O	H							Some erosion of character through development. Manage area as Heritage Coast strongly restricting development.
Historical Landscapes	HL 001	Vale of Glamorgan coastal littoral	Marginal Land	Unassessed											
	HL 034	Ogmore Down	Marginal Land	Unassessed											
	HL 036	St Donat's, Monknash and St Brides Major	Regular Fieldscapes	Unassessed											
Cultural	CL 002	Heritage Coast	Institutions	High	L	H	M	U	H	H	L	H	U		Improve promotion as a leisure destination.
	CL 007	Ewenny Quarry	Industrial	High	L	U	L	U	H	U	U	L	U		Apparently well run, with limited impact on the surroundings. Continue as now within the buffer zones identified.
	CL 023	Merthyr Mawr Registered Landscape	Institutions	Outstanding	L	O	L	U	H	H	L	H	U		Designation is the principal - and effective - management tool. Vigilance against the incursion of inappropriate development
	CL 039	Vale of Glamorgan Rural Landscape	Rural	High	H	O	L	U	O	H	L	H	L		Maintain consistent planning policies to preserve the landscape.

LANDSCAPE CHARACTER AREA 13 - YSTRADOWEN LOWLAND VALLEYS

Plan



Photographs



Vale of Glamorgan Golf and Country Club golf course

Description

An area of undulating landscape on the northern fringe of the unitary authority area. It has relatively good tree cover with areas of woodland at Talygarn and around Hensol Park. Parts of the area (Pendoylan) are formed by glacial deposits and overall this provides a complex system of small valleys and intervening hills which rise up in places to 130m AOD. Morfa Ystradowen forms a large area of lowland mire. At its centre, Hensol Forest forms a separate LCA due to its specific habitat.

Geological Landscapes

Primarily an area of lowland glacial hill (aspect area GL532) which results in an irregular terrain, somewhat hummocky in places. On its eastern edge it abuts the side slopes of the Ely valley.

Landscape Habitats

A broad mixture of lowland habitats, including semi-improved neutral grasslands, hedgerows and hedgerow trees together with a number of woodlands. The valley floors have areas of wet grassland and mire (such as Morfa Ystradowen). There are also areas of standing water – such as Hensol Park – which also contribute to the overall habitat diversity of the LCA, which includes the largest heronry in Wales.

Visual and Sensory Landscapes

A complex landscape of lowland valleys and hills (aspect area VS962) which form the upper reaches of the tributaries to the Thaw and Ely rivers, rising up to some 130 metres AOD. It is a mosaic of small to medium pastoral fields within a network of strong hedgerows, hedgerow trees and scattered woodland. These woodlands tend to be on the steeper slopes eg: Coed Wern-Fawr or alongside water courses, such as the Nant Tredodridge. Farms and houses are scattered around the area, although the few settlements show increased signs of suburbanisation.

Historic and Cultural Landscapes

The landscape character reflects its historic development (aspect area HL053) as an agricultural area. It also includes Hensol Castle and associated planned parkland (aspect area HL045) which is included on the Register of Landscapes, Parks and Gardens of Special Interest in Wales. In terms of cultural landscapes the development of the Hotel, Spa and Golf complex in the area is a key facet of the landscape (aspect area CL033).

Key Policy and Management Issues

- Management of strong network of hedgerows to retain integrity to character of the area.
- Longer term management of woodlands.
- Management of key lowland habitats, such as Morfa Ystradowen, which contribute to the character of the area.
- Ensure any developments at Hensol Castle reflect the value of the surrounding parkland landscape.

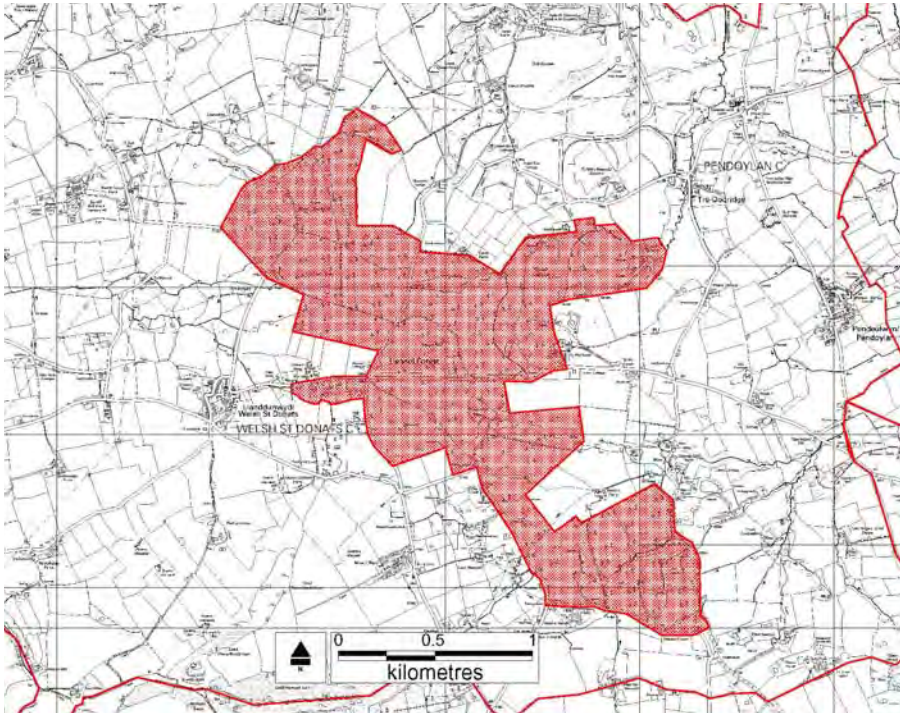
- Ensure any further developments at the Vale Hotel/Spa/Golf complex do not undermine the wider landscape character.

LCA 13
Ystradowen
Lowland Valley

Aspect	Aspect Area	Area Name	Description	Overall Evaluation	Evaluation Criteria									Management Issues	
					1	2	3	4	5	6	7	8	9		
Geological	GL 282	St. Hilary	Other	High	M	M	M	L							Conserve existing geomorphological integrity
	GL 532	Pendoylan	Lowland till plain / field	High	H	M	M	M							Conserve existing geomorphological integrity
	GL 986	Morfa Ystradowen	Other	High	M	L	H	L							Conserve existing geomorphological integrity
Landscape Habitats	LH 001	Warren Farm - Hensol East	Mosaic	High											Encourage sympathetic management of field boundaries.
	LH 118	Cowbridge East	Mosaic	Moderate											Less intensive agricultural management.
	LH 160	Coed Mynydd-coch	Mosaic	High	H	M	M	U	U	H	H	U			Unassessed
	LH 403	Ely Valley	Mosaic		H	H	U	U	H	L	H	H			Unassessed
	LH 476	Hensol park	Mosaic	High	H	M	M	U	M	H	H	H			Connectivity of woodland habitat in particular would be beneficial.
	LH 582	Ogmore-Llantwit Arable Belt	Mosaic	Moderate	M	L	M	U	L	M	L	H			The provision of set aside buffer strips at the edges of the arable fields and sympathetic management of field boundaries would increase biodiversity interest.
	LH 958	Barry North	Mosaic	Moderate	H	O	M	U	U	M	M	M			Existing management generally appropriate.
	LH 992	Morfa Ystradowen	Mosaic	High	H	H	M	U	U	U	H	U			Unassessed
	Visual and Sensory	VS 683	Ely Valley	Mosaic Rolling Lowland	High	H	H	M	M						
VS 933		Northern Vale Lias Slopes	Open Rolling Lowland	Moderate	M	M	M	M							Declining trees and hedgerows in the landscape. Improve tree cover.
VS 962		Ystradowen/Hensol area	Mosaic Lowland Valleys	Moderate	H	M	M	M							Investment in rural boundaries and tree cover. Improve woodland, tree, hedgerow cover and stream conditions.
Historical Landscapes	HL 044	Mynydd y Glew and Hensol Forest	Woodland	Unassessed											
	HL 045	Hensol Castle	Hensol Castle	Unassessed											
	HL 053	Ystradowen	Irregular Fields	Unassessed											
	HL 054	Llangan Welsh St Donats and Pendoylan	Regular Fields	Unassessed											
Cultural	CL 028	Rural Village Conservation Areas	Institutions	Outstanding	M	H	L	M	O	H	L	L	U		Ensure designation affords protection. Continue to police designated areas
	CL033	Hensol Castle etc.	Customs	High	M	H	M	U	H	H	L	U	H		The planned rehabilitation of Hensol Castle and historic landscape will, it is hoped, soon match the careful management evident in the Vale Hotel, Golf & Spa Resort. Implement planned improvements and development to a high standard.
	CL 034	Llanerch Vineyard	Customs	High	H	H	H	U	H	H	M	H	M		Maintain existing very high standards.
	CL 037	Windfarm Landscape	Industrial	High	H	H	L	U	H	U	U	H	U		n/a
	CL 039	Vale of Glamorgan Rural Landscape	Rural	High	H	O	L	U	O	H	L	H	L		Maintain consistent planning policies to preserve the landscape.

LANDSCAPE CHARACTER AREA 14 - HENSOL FOREST

Plan



Photographs



Hensol Forest



Hensol castle

Description

A substantial woodland area, predominantly coniferous plantations managed by the Forestry Commission. Visually prominent, rising up to 130m AOD near Welsh St Donats, the area is an important informal recreation resource.

Geological Landscapes

Part of the area of glacial deposits found within this part of the Vale (aspect area GL532), it contains a range of glacial features, such as kettle holes, moraines and other features. Although largely masked by the forestry plantations they form important lowland glacial deposits.

Landscape Habitats

A dominant coniferous woodland (aspect area LH147) with an associated range of habitats and species.

Visual and Sensory Landscapes

A predominantly coniferous forest set upon the hilltops and side slopes of a wider lowland hills and valley landscape (see LCA 13). The scale of the forestry gives a sense of confinement and seclusion. The forest complex is widely visible in the surrounding landscape forming a distinct landmark in this part of the northern Vale. The forest is crossed by three minor roads and despite public access to the forest area there is little traffic disturbance.

Historic and Cultural Landscapes

A component on the wider Vale agricultural landscape, the forest has associations with the development of state forestry in the UK and continues to be managed by the Forestry Commission. It forms an important informal recreation resource.

Key Policy and Management Issues

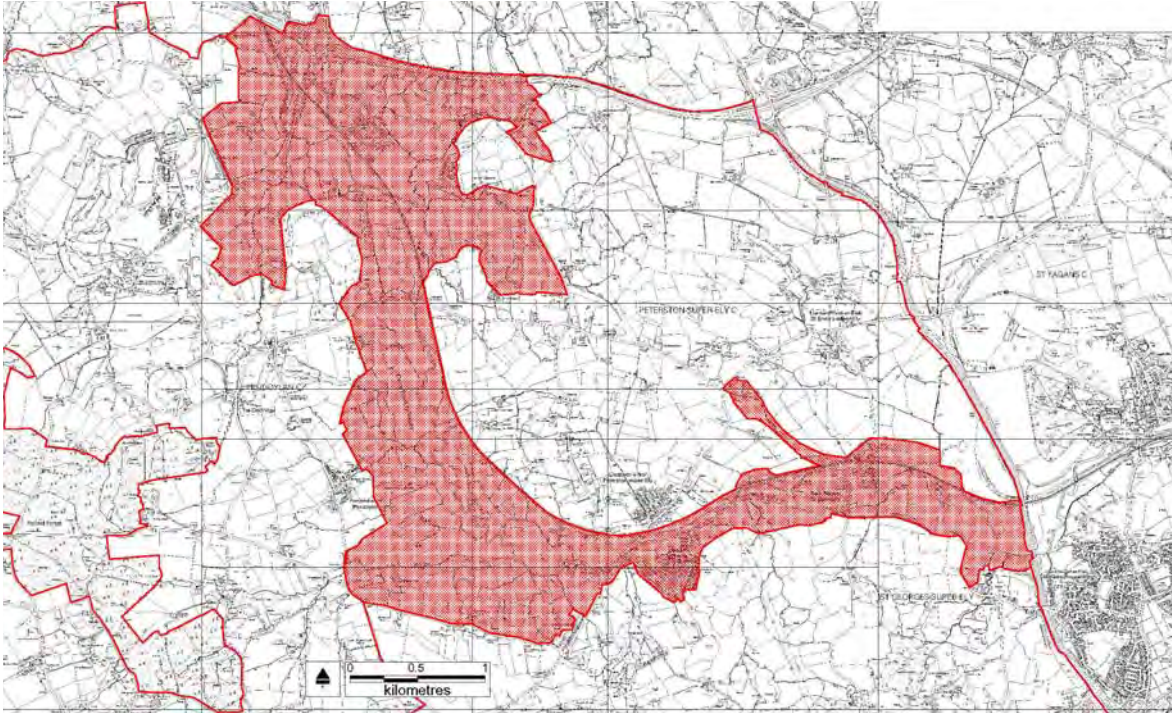
- Longer term management of forest resource and reconciliation with Forestry Commission to minimise landscape effects.
- Impact of visitor pressure upon car parks and adjacent areas.
- Management of waste / litter.

LCA 14 Hensol Forest

Aspect	Aspect Area	Area Name	Description	Overall Evaluation	Evaluation Criteria									Management Issues	
					1	2	3	4	5	6	7	8	9		
Geological	GL 532	Pendoylan	Lowland till plain / field	High	H	M	M	M							Conserve existing geomorphological integrity
Landscape Habitats	LH 118	Cowbridge East	Mosaic	Moderate	L	L	H	U	L	M	M	H			Less intensive agricultural management.
	LH 471	Hensol Forest	Coniferous Woodland	High	H	H	H	U	M	H	H	H			Replacement of conifers with broadleaf tree cover.
Visual and Sensory	VS 913	Hensol Forest	Wooded Rolling Lowland	High	M	H	H	M							Recreational infrastructure is worn. Improve as a focus for recreation and increase broadleaf tree cover.
Historical Landscapes	HL 044	Mynydd y Glew and Hensol Forest	Woodland	Unassessed											
Cultural	CL 039	Vale of Glamorgan Rural Landscape	Rural	High	H	O	L	U	O	H	L	H	L		Maintain consistent planning policies to preserve the landscape.

LANDSCAPE CHARACTER AREA 15 - ELY VALLEY

Plan



Photographs



From north of Pendoylan, looking east into Ely Valley



Ely River from Pont Sarn, looking south

Description

Large lowland valley running across the north eastern corner of the Vale before running into the Taff complex at Cardiff Bay. The landscape is affected by the presence of the Swansea Cardiff railway line, and the valley is one of the main river systems within the Vale.

Geological Landscapes

A broad alluvium filled floodplain (aspect area GL263) running across the Vale and connecting into the Taff Estuary. It includes the low valley sides.

Landscape Habitats

A mosaic of lowland habitats, with a particular range of riparian features relating to the river itself. Field boundaries formed by hedgerows, with hedgerow trees, with limited areas of woodland, usually on the steeper valley sides eg: St Georges and Wyndham Park.

Visual and Sensory Landscapes

A lowland valley floor, mostly floodplain (aspect area VS406), generally flat in nature. This creates a sense of openness and it contains the attractive, meandering Ely River. A mosaic of field patterns, with often gappy and overgrown hedges which gives a slightly uncared for feel to the area. There are a number of scattered farmsteads and houses, and the main settlements along the river are St George's and part of Wyndham Park. Low lying wetter areas, such as Peterston Moors, have a characteristic rectilinear field system and associated drainage ditches.

Historic and Cultural Landscapes

It forms part of the large rural Vale cultural landscape aspect area (CL039) which draws upon the rural landscape associations found within the LCA. It also includes a SSSI, and therefore has national associations (aspect area CL022) reflecting its statutory designation.

Key Policy and Management Issues

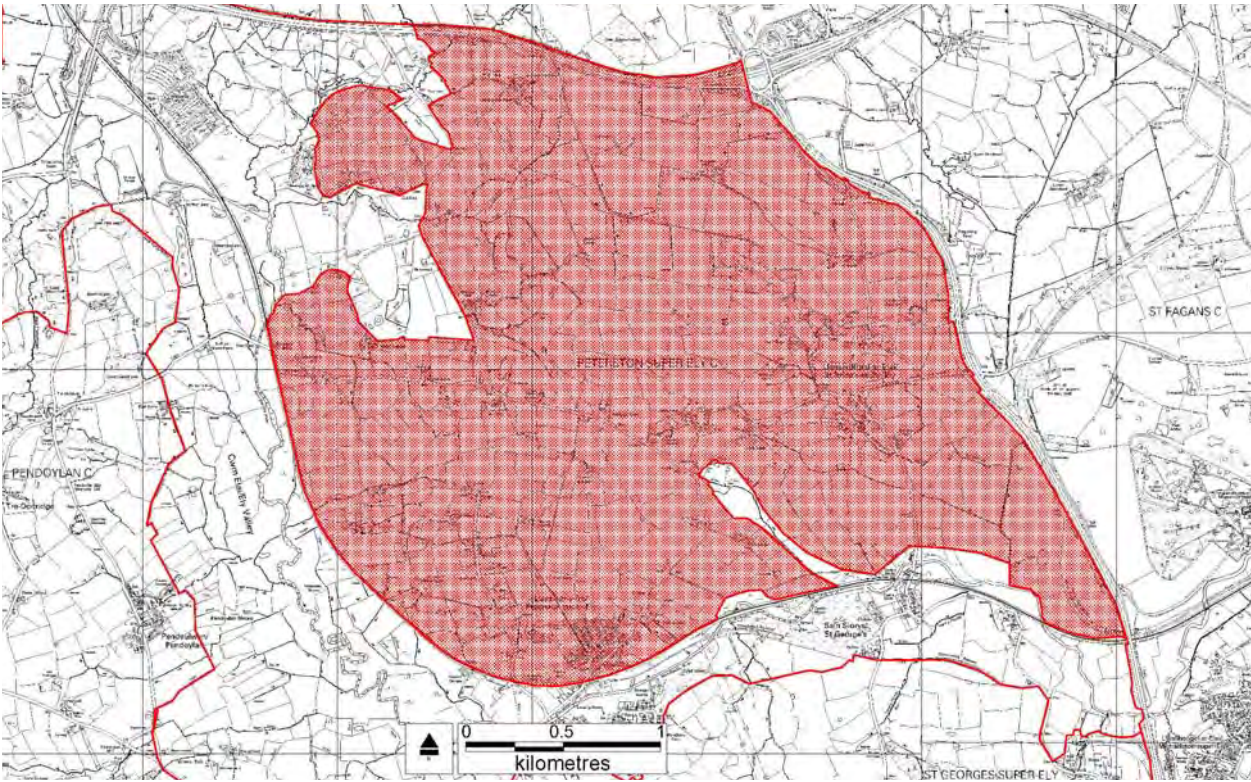
- Maintenance of landscape features to retain the integrity of the agricultural landscape.
- Management of SSSI to meet conservation objectives.
- Impact of development upon landscape character.
- Improve connectivity of woodland habitat.

LCA 15 Ely Valley

Aspect	Aspect Area	Area Name	Description	Overall Evaluation	Evaluation Criteria									Management Issues	
					1	2	3	4	5	6	7	8	9		
Geological	GL 263	Pendoylan Moors-Ely	Active lowland river-flood plain system	Moderate	M	L	M	L							Conserve existing geomorphological integrity
	GL 532	Pendoylan	Lowland till plain / field	High	H	M	M	M							Conserve existing geomorphological integrity
	GL947	Peterston	Undulating lowland hill terrain	Moderate	L	L	M	L							Conserve existing geomorphological integrity
Landscape Habitats	LH 403	Ely Valley	Mosaic	High	H	H	U	U	H	L	H	H			Unassessed
	LH 476	Hensol park	Mosaic	High	H	M	M	U	M	H	H	H			Connectivity of woodland habitat in particular would be beneficial.
	LH 853	Peterstone-super-Ely	Improved Grassland	Moderate	M	M	U	U	U	U	M	U			The aspect area supports an improved agricultural landscape. Encourage sympathetic management of semi-improved grassland.
	LH 958	Barry North	Mosaic	Moderate	H	O	M	U	U	M	M	M			Existing management generally appropriate.
Visual and Sensory	VS 389	Ely Valley north	Open Lowland Valleys	Moderate	M	H	M	M							Hedgerows poor in places. Maintain rural character
	VS 406	Ely Valley Flood Plain	Open Lowland Valleys	Moderate	H	M	H	M							Fields and hedgerows in a state of decline. Enhance hedgerow and field management.
	VS 683	Ely Valley	Mosaic Rolling Lowland	High	H	H	M	M							Hedgerows poor in places. Maintain rural character of valley.
	VS 909	M4 motorway	Road Corridor	Low	L	M	L	L							Embankments are planted and managed appropriately. Continue to achieve woodland cover to enclose road.
	VS 962	Ystradowen/Hensol area	Mosaic Lowland Valleys	Moderate	H	M	M	M							Improve woodland, tree, hedgerow cover and stream condition.
Historical Landscapes	HL 043	Ely Valley	Regular Fieldscapes	Unassessed											
	HL 053	Ystradowen	Irregular Fieldscapes	Unassessed											
	HL 054	Llangan Welsh St Donats and Pendoylan	Regular Fieldscapes	Unassessed											
	HL 055	St Brides-super-Ely	Regular Fieldscapes	Unassessed											
Cultural	CL 001	M4	Infrastructure	Outstanding	O	H	L	U	H	U	L	L	H		Well maintained - though prone to frequent roadworks. Continue as now
	CL 022	Ely Valley SSSI	Institutions	Outstanding	L	H	L	U	M	H	L	U	O		Designation affords protection
	CL 028	Rural Village Conservation Areas	Institutions	Outstanding	M	H	L	M	O	H	L	L	U		Ensure designation affords protection. Continue to police designated areas.
	CL 031	Peterston-s-Ely & Wyndham Park	Institutions	High	L	H	H	U	H	M	U	H	U		Consider the designation of Wyndham Park (or parts of it) as a Conservation Area to reflect the input of the landscape designer Thomas Mawson
	CL 032	Bosch Industrial Park & Motte	Institutions	Low	L	H	L	L	U	H	U	U	U		Ensure that the SAM continues to be afforded protection.
	CL 034	Llanerch Vineyard	Customs	High	H	H	H	U	H	H	M	H	M		Maintain existing very high standards
	CL 035	Great Western Railway	Infrastructure	Outstanding	O	H	L	U	H	H	L	H	L		Improve track maintenance
	CL 039	Vale of Glamorgan Rural Landscape	Rural	High	H	O	L	U	O	H	L	H	L		Maintain consistent planning policies to preserve the landscape.

LANDSCAPE CHARACTER AREA 16 - NORTHERN VALE LOWLANDS

Plan



Photographs



Near Allt-laes, looking north

Description

An area of open lowland valleys and hills rising up to 70m AOD near Palla Farm contained by the Ely Valley and the M4 motorway/A4232 road which forms the northern and eastern edges of the unitary authority area. In form and character it relates closely to adjacent areas in Cardiff.

Geological Landscapes

Part of a wider area of undulating, hilly terrain (aspect area GL947) underlain with sandstone rocks overlain by hummocky glacial drift deposits giving a greater, rounder land form.

Landscape Habitats

An area typified by dry terrestrial habitats - grasslands, woodland, mixed grassland areas. Other habitats include those associated with field boundaries, generally formed by hedgerows with trees. Few areas of woodland, often associated with water courses eg: Nant Coslech near Gwenn y gedrych.

Visual and Sensory Landscapes

An area of undulating lowland and valley sides, rising up to 70m AOD at Palla Farm, down to 15 metres adjacent to the Ely floodplain. A mosaic of arable and pastoral fields set within a framework of hedgerows and hedgerow trees. A number of scattered farmsteads, the main settlements include St Brides-super-Ely and Peterston-super-Ely.

The proximity of the M4 motorway and A4232 results in noise disturbance and detracts from the quality of the area.

Historic and Cultural Landscapes

Includes relict medieval strip fields around St Bride's-super-Ely (aspect area HL055) which are an important remnant of the agricultural and cultural development of the area.

Key Policy and Management Issues

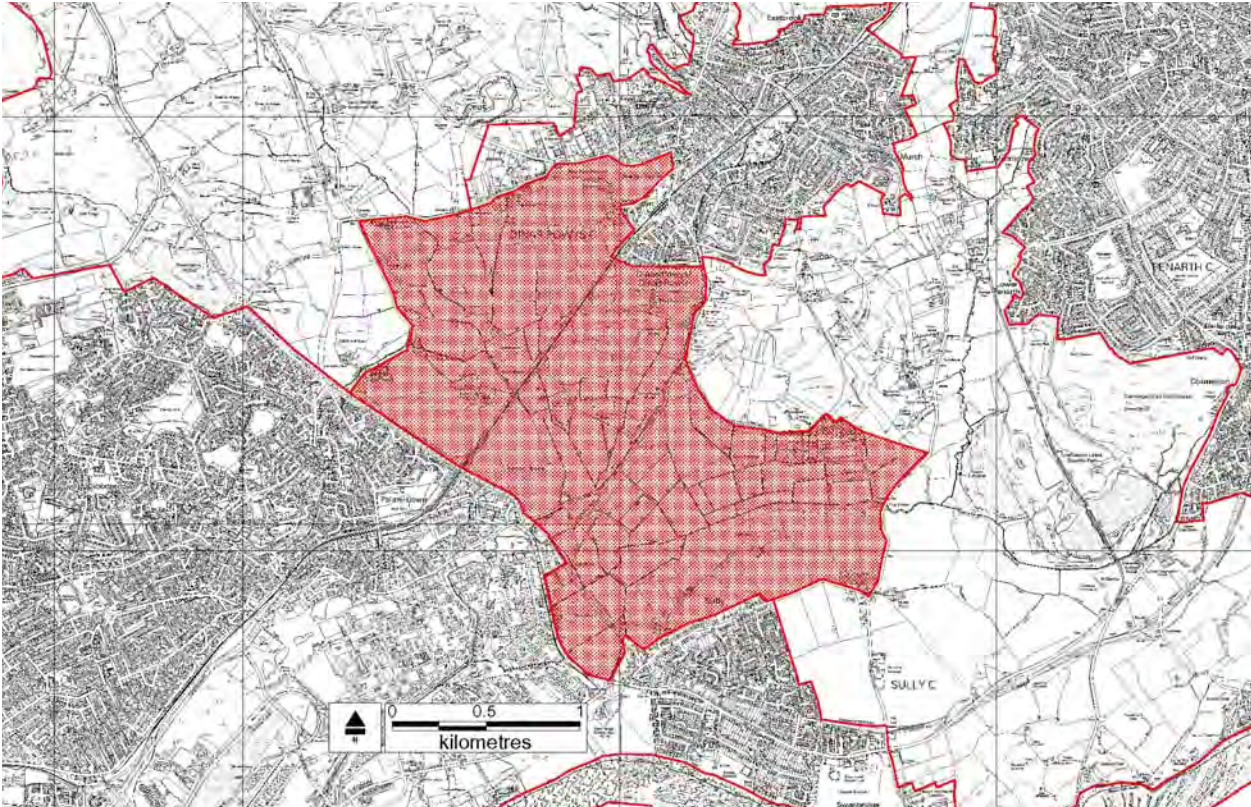
- Long term management of field boundaries to maintain the integrity of the agricultural landscape.
- Retention of historic field patterns around St Brides-super-Ely.
- Mitigation of settlement edge development upon the wider landscape.
- Continue woodland cover to enclose M4.

LCA 16 Northern
Vale Lowlands

Aspect	Aspect Area	Area Name	Description	Overall Evaluation	Evaluation Criteria									Management Issues	
					1	2	3	4	5	6	7	8	9		
Geological	GL 263	Pendoylan Moors-Ely	Active lowland river-flood plain system	Moderate	M	L	M	L							Conserve existing geomorphological integrity
	GL 947	Peterston	Undulating lowland hill terrain	Moderate	L	L	M	L							Conserve existing geomorphological integrity
Landscape Habitats	LH 403	Ely Valley	Mosaic	High	H	H	U	U	H	L	H	H			Unassessed
	LH 853	Peterston-super-Ely	Improved Grassland	Moderate	M	M	U	U	U	U	M	U			The aspect area supports an improved agricultural landscape. Encourage sympathetic management of semi-improved grassland.
Visual and Sensory	VS 389	Ely Valley north	Open Lowland Valleys	Moderate	M	H	M	M							Hedgerows poor in places. Maintain rural character.
	VS 406	Ely Valley Flood Plain	Open Lowland Valleys	Moderate	H	M	H	M							Fields and hedgerows in a state of decline. Enhance hedgerow and field management.
	VS 909	M4 motorway	Road Corridor	Low	L	M	L	L							Embankments are planted and managed appropriately. Continue to achieve woodland cover to enclose road.
Historical Landscapes	HL 043	Ely Valley	Regular Fieldscapes	Unassessed											
	HL 055	St Brides-super-Ely	Regular Fieldscapes	Unassessed											
Cultural	CL 022	Ely Valley SSSI	Institutions	Outstanding	L	H	L	U	M	H	L	U	O		Designation affords protection
	CL 031	Peterston-super-Ely & Wyndham Park	Institutions	High	L	H	H	U	H	M	U	H	U		The application of planning policies appears to be appropriate. Consider the designation of Wyndham Park (or parts of it) as a Conservation Area to reflect the input of the landscape designer Thomas Mawson
	CL 039	Vale of Glamorgan Rural Landscape	Rural	High	H	O	L	U	O	H	L	H	L		Maintain consistent planning policies to preserve the landscape.

LANDSCAPE CHARACTER AREA 17 - COG MOORS

Plan



Photographs



View from Cardiff Road

Description

An area of flat, lowland farmland range 5 to 10m AOD, surrounded by higher ground at Dinas Powys and Sully. A reclaimed marshland area, it has a poorly managed feel with a number of detractors, together with settlement edge management issues.

Geological Landscapes

A former estuarine area (aspect area GL108) reclaimed as part of the development of Barry Docks in the nineteenth century. Its form reflects its history as a saltmarsh channel system, which gives a manmade feel to the area.

Landscape Habitats

A mixture of lowland agricultural vegetation, hedgerows and hedgerow trees. Few if any areas of the woodland, the drainage ditch system provides an important habitat resource.

Visual and Sensory Landscapes

A flat area of reclaimed marshland given over to agriculture. Enclosed by higher ground (Pop Hill at 40m AOD, Sully Ridge 50m plus AOD) it presents a mosaic of rough pasture within a matrix of drainage ditches and associated hedgerows and hedgerow trees. Many of the hedgerows are gappy and overgrown, and despite its proximity to Barry and Dinas Powys it retains a remote and tranquil feel. However it exhibits a poorly managed picture, compounded on the settlement edges. It has a number of detractors, including overhead power lines and the noise disruption of the railway and A4055 road.

Historic and Cultural Landscapes

A locally important example of a reclaimed marshland landscape (aspect area HL008) given its association with the works of David Davies and the development of Barry Docks which is integral to the cultural development of the South Wales coalfield.

Key Policy and Management Issues

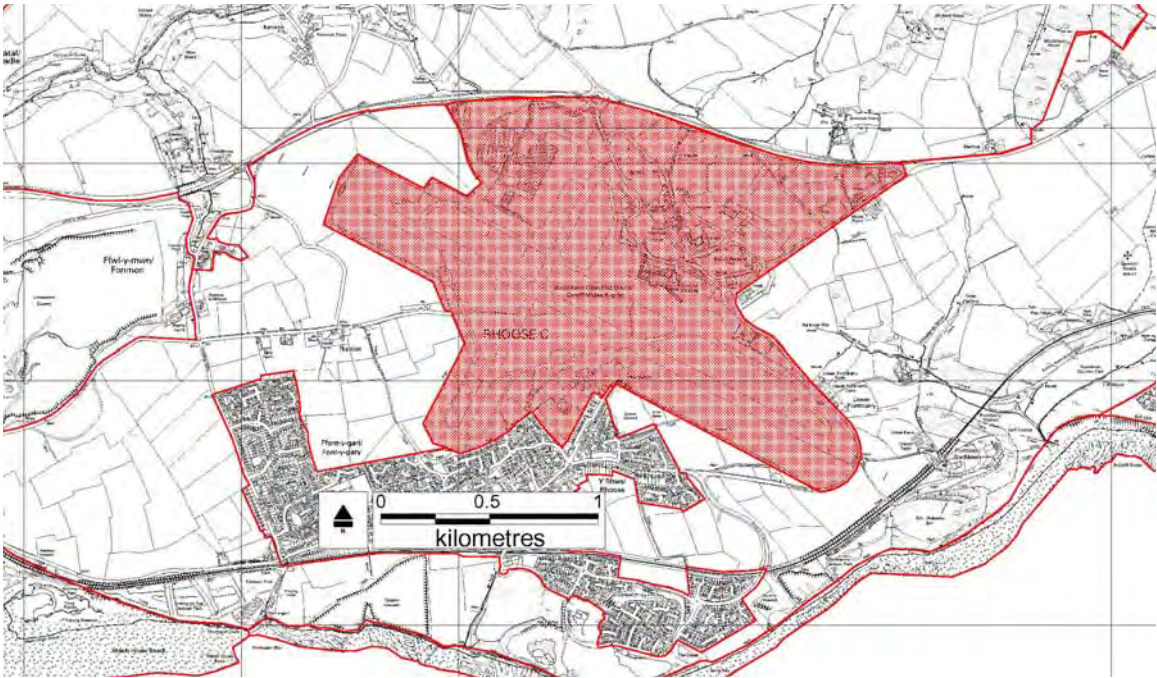
- Retention of the integrity of the farmed landscape through better management of the field boundary hedgerows.
- Addressing settlement edge landscape management such as litter, drainage to landscape features and visual dysfunction.
- Recognition of the historical and cultural importance of the landscape to the wider development of the area.

LCA 17 Cog Moors

Aspect	Aspect Area	Area Name	Description	Overall Evaluation	Evaluation Criteria									Management Issues	
					1	2	3	4	5	6	7	8	9		
Geological	GL 108	Barry Docks-Cog Moors	Engineered features and reclaimed / infilled land	Low	L	L	L	L							Construction and expansion of Barry Docks and associated industrial facilities, including reclamation of estuary and former saltmarsh has removed the natural character of much of the Aspect Area... Small areas with traces of former saltmarsh channels locally survive however and conservation of such areas, including their sediment record of Quaternary climate change, could ensure that total loss of this record does not occur...
	GL 238	Penarth	Lowland escarpment	Moderate	L	L	M	L							Conserve existing geomorphological integrity
	GL 749	Wenvoe	Lowland escarpment	High	H	M	M	L							Conserve existing geomorphological integrity
Landscape Habitats	LH 135	Cog	Mosaic	Low	L	L	H	U	L	L	L	U			Intensively managed habitat of limited value for wildlife.
	LH 684	Cog Moors	Mosaic	High	H	M	U	U	M	U	H	M			Unassessed
	LH 814	Penarth	Residential/Green Space	Low	L	U	U	U	U	U	L	U			Many of the gardens within older Penarth properties are large and have the potential to provide local wildlife value.
Visual and Sensory	VS 288	Dinas Powis	Urban	Moderate	M	L	M	M							Little maintenance of outer housing estates. Manage and improve main shopping core.
	VS 480	Cog Moors	Flat Open Lowland Farmland	Moderate	M	M	H	M							Hedgerow management poor. Retain area as green buffer between settlements.
	VS 620	Wenvoe Environs	Mosaic Lowland Valleys	Moderate	M	M	M	M							Key issue is erosion of rural character. Reinforce rural character of area and minimise impact of development.
	VS 637	Sully Ridge	Open Rolling Lowland	Moderate	H	M	M	M							Farms well maintained. Maintain current pattern of agricultural use.
Historical Landscapes	HL 008	Sully and Dinas-Powys Moors	Regular Fieldsapes	Unassessed											
	HL 010	Lavernock	Regular Fieldsapes	Unassessed											
	HL 011	Cogan and Pop Hill	Irregular Fieldsapes	Unassessed											
	HL 024	Michaelston-le-Pit and St Andrews Major	Irregular Fieldsapes	Unassessed											
Cultural	CL 009	Vale of Glamorgan Railway	Infrastructure	High	M	H	H	U	L	H	L	U	M		Assumed to be good and appropriate. Continue to maintain and promote use of the line.
	CL 013	Sully	Infrastructure	High	L	O	H	U	L	H	L	L	H		Developers are assumed to be applying high standards. Respect architectural integrity .
	CL 016	Dinas Powys	Urban	Moderate	M	M	M	U	M	H	L	M	U		Individual house owners manage their properties well. Continue as now.
	CL 039	Vale of Glamorgan Rural Landscape	Rural	High	H	O	L	U	O	H	L	H	L		Maintain consistent planning policies to preserve the landscape.

LANDSCAPE CHARACTER AREA 18 - CARDIFF INTERNATIONAL AIRPORT

Plan



Photographs



Cardiff International Airport from Lower Porthkerry

Description

Former RAF airfield developed as a commercial airport. Has associated airport buildings, together with the British Airways maintenance depot and associated hotels and businesses. A flat open area reflecting its functionality.

Geological Landscapes

The airport lies on a section of the Lias lowland plateau, with a number of small, steep sided truncated valleys on the coastal edge (eg: Whitelands Brook at the adjacent settlement of Porth Kerry). The airport runways and apron lie on one of the most level areas of the plateau across the 60 to 65 metres contour lines.

Landscape Habitats

Part of an area typified by grassland mosaics, the LCA is predominantly open grassland, again reflecting its use.

Visual and Sensory Habitats

An area of open, lowland plateau (aspect area VS723), with slightly higher ground to the north around the location of the Airport Hotel on the airport access road (70m AOD). It is characterised by a mixture of open grassland and runways/hardstanding with the terminal complex on its northern edge. The nature of its use - as an airport creates a functional sterility to the LCA, but makes the terminal complex and the adjacent British Airways maintenance building highly visible. The LCA has a sense of openness and exposure with a range of long, wide views.

Historic and Cultural Landscapes

Associated with the development of Cardiff as a capital and international city, and with the availability of air travel to the general public.

Key Policy and Management Issues

The airport functions as a primary gateway to the Vale and the remainder of South Wales beyond. It is important that in landscape terms efforts are concentrated on:-

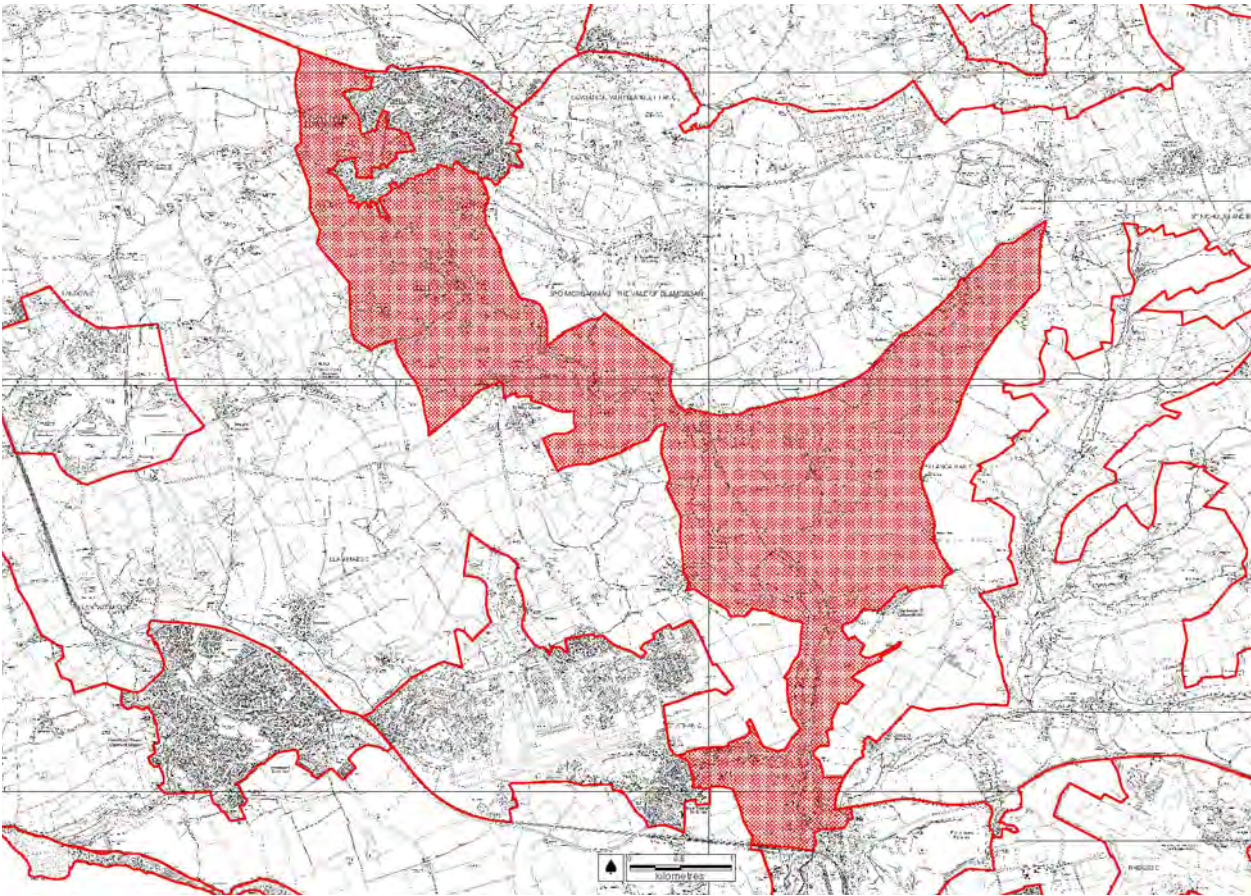
- Maintaining a high quality destination / gateway for tourists and business people.
- Establishing a co-ordinated structural landscape which takes on board the functional requirements of the airport.
- Ensuring future developments and expansion, including hotels and other business areas is implemented within a framework of high quality design, finish and management. Refer to existing Supplementary Planning Guidance "Design in the Landscape".

**LCA 18 Cardiff
International
Airport**

Aspect	Aspect Area	Area Name	Description	Overall Evaluation	Evaluation Criteria									Management Issues	
					1	2	3	4	5	6	7	8	9		
Geological	GL 962	Barry-Rhoose	Lowland plateau	High	H	M	M	M							Conserve existing geomorphological integrity
Landscape Habitats	LH 839	Aberthaw	Mosaic	Moderate	M	M	U	U	U	U	M	M			Unassessed
	LH 840	Rhoose-Moulton	Mosaic	Moderate	M	M	U	U	U	M	M	M			Sympathetic management of hedgerows in particular may help to increase connectivity within and between local aspect areas.
Visual and Sensory	VS 723	Cardiff Wales Airport	Urban	Low	L	L	H	M							Sterile landscape treatment in parts. Increase tree/hedgerow cover to screen development .
Historical Landscapes	HL 002	Southern Vale Communication Corridor	Communications	Unassessed											
	HL 030	Porthkerry Rural	Regular Fieldsapes	Unassessed											
Cultural	CL 010	Cardiff International Airport	Infrastructure	High	H	H	L	U	H	H	L	U	L		Standards of passenger management appear to be good. Recognising that traffic volumes are unlikely, or will be slow to increase, it is recommended that the principal improvements should be to customer relations and airport refreshment delivery
	CL 039	Vale of Glamorgan Rural Landscape	Rural	High	H	O	L	U	O	H	L	H	L		Maintain consistent planning policies to preserve the landscape.

LANDSCAPE CHARACTER AREA 19 - LOWER THAW VALLEY

Plan



Photographs



Lower Thaw Valley looking south towards St Athan

Description

A relatively broad, steep sided valley running southwards from Cowbridge to Aberthaw (see LCA 4). The valley sides are formed by the exposed deposits of the dissected plateau, and the steeper slopes are often covered in woodland. The valley suffers from the presence of overhead power lines running northwards from Aberthaw Power Station.

Geological Landscapes

Lower stretch of an active lowland river system (aspect area GL514) cut into the Lias plateau, with local alluvial fans where tributaries enter in the main river (eg: River Kenyon).

Landscape Habitats

The LCA has a range of lowland and riparian habitats associated with the valley floor. The northern section is wider, with more gentle, rounded valley sides and spurs. South of Llanbethery the valley narrows to where it adjoins LCA 4, here the valley sides are much steeper and cloaked in woodland.

Visual and Sensory Landscapes

A wide, sinuous floodplain, with a mosaic of pastoral fields, including areas of rougher vegetation, surrounded by a mixture of gappy hedgerows and fences following the pattern of drainage ditches on the valley floor. The steeper valley sides are visually covered in woodland (eg: Coed Llancadle, Oxmoor Wood, and East Orchard Wood). The eastern side of the valley is characterised by the distinct line of the disused railway that ran northwards from Aberthaw. There are a number of visual detractors, including overhead power lines and the quality of field boundaries. The developments at Aberthaw at the southern end of the valley visually dominant the LCA, and provide detractors to its overall quality.

Historic and Cultural Landscapes

The Thaw is the largest valley that crosses the Vale (aspect area HL049) and is reflected in its function as a routeway for railways and overhead power lines. It is associated with the wider agricultural development of the Vale landscape.

Key Policy and Management Decision

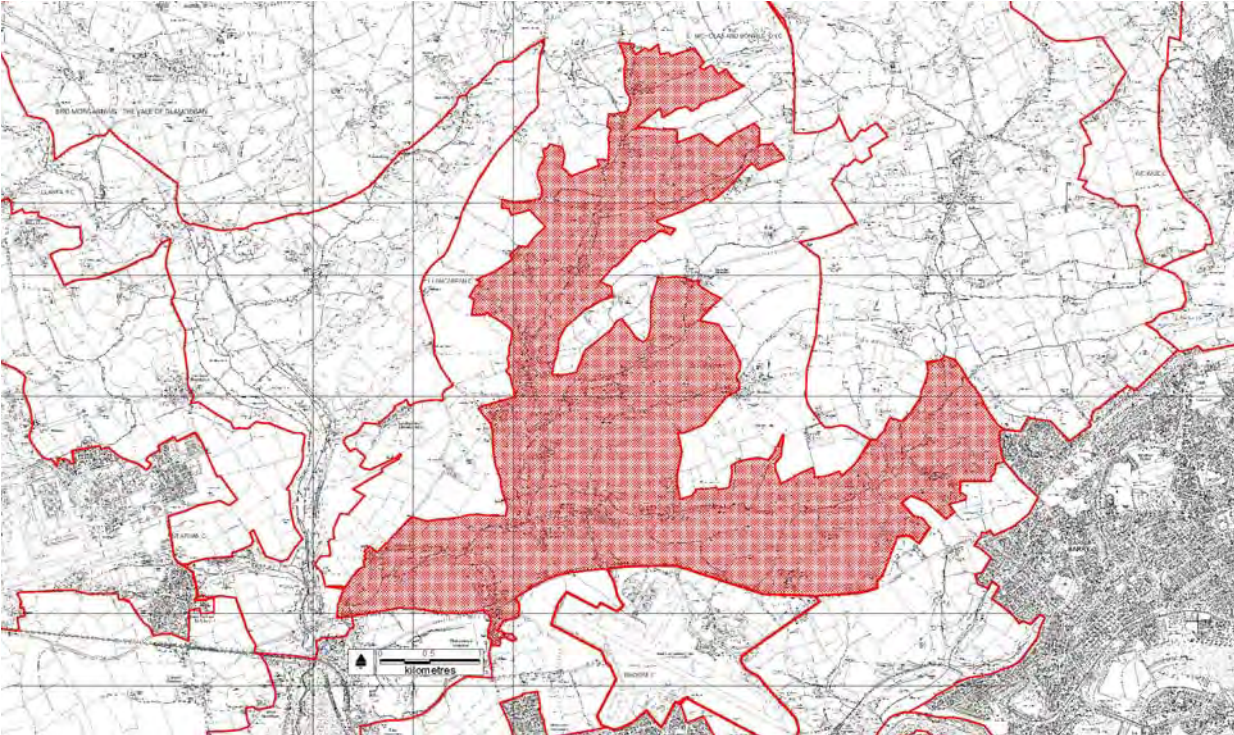
- Management of field boundaries and ditches to retain the integrity of the agricultural landscape.
- Longer term management of valley side woodlands.
- Implications of any future developments at Aberthaw on the valley landscape.
- Less intensive agricultural/grazing practices may be beneficial

LCA 19 Lower Thaw Valley

Aspect	Aspect Area	Area Name	Description	Overall Evaluation	Evaluation Criteria									Management Issues	
					1	2	3	4	5	6	7	8	9		
Geological	GL 282	St. Hilary	Other	High	M	M	M	L							Conserve existing geomorphological integrity
	GL 492	Ewenny-Penllyn	Other	Outstanding	O	O	O	O							Conserve existing geomorphological integrity
	GL 514	Thaw-Waycock	Active lowland river-flood plain system	Moderate	M	L	L	L							Conserve existing geomorphological integrity
	GL 658	Penllyn Moor	Active lowland river-flood plain system	High	H	M	M	M							Conserve existing geomorphological integrity
Landscape Habitats	LH 103	Cowbridge	Residential/Green Space	Low	U	U	U	U	U	U	L	M			Encourage 'wildlife-friendly' management practices.
	LH 118	Cowbridge East	Mosaic	Moderate	L	L	H	U	L	M	M	H			Less intensive agricultural management desirable.
	LH 350	Lower Thaw Valley	Mosaic	High	H	H	M	U	L	H	H	U			The aspect area appears to suffer from heavy grazing and a reduction in grazing intensity may be beneficial.
	LH 435	Cowbridge West	Improved Grassland	Moderate	M	L	H	U	L	L	M	U			Encourage less intensive land management practices, particularly field boundaries.
	LH 436	Cowbridge South - Thaw Valley	Mosaic	High	H	M	U	U	U	M	H	H			Unassessed
	LH 582	Ogmore-Llantwit Arable Belt	Mosaic	Moderate	M	L	M	U	L	M	L	H			The provision of set aside buffer strips at the edges of the arable fields and sympathetic management of field boundaries would increase biodiversity interest.
	LH 583	St Athan	Mosaic	Low	L	L	M	U	L	U	L	M			Unassessed
	LH 786	Aberthaw River Valleys	Mosaic	High	H	O	M	U	U	H	H	H			Existing management generally appropriate.
	LH 839	Aberthaw	Mosaic	Moderate	M	M	U	U	U	U	M	M			Unassessed
Visual and Sensory	VS 110	Lower Thaw valley sides	Mosaic Lowland Valleys	High	H	M	H	H							Woodland management needs improving. Retain and manage wooded slopes and improve boundaries.
	VS 139	Mid Thaw Valley	Mosaic Lowland Valleys	High	H	H	H	H							Retain and manage wooded slopes and protect and improve boundaries.
	VS 146	Central Vale Ridges and Slopes	Mosaic Rolling Lowland	High	M	M	M	M							Area in general well managed but need for enhancing woodland and hedgerow cover.
	VS 305	Lower Thaw valley floor	Open Lowland Valleys	Moderate	M	M	H	M							Hedgerows deteriorating and power lines unsightly. Improve hedgerows and access.
	VS 742	Aberthaw Quarry	Excavation	Low	L	L	M	M							Generally works and quarry screened as far as possible. Maintain and improve screening and ensure reclamation is appropriate.
	VS 805	Lias Plateau	Open Rolling Lowland	Moderate	M	M	M	M							Intensive farming reducing interest in landscape. Introduce cover and interest into landscape
	VS 890	Heritage Coast Hinterland	Open Rolling Lowland	Outstanding	O	H	O	H							Some erosion of character through development. Manage area as Heritage Coast strongly restricting development.
Historical Landscapes	HL 002	Southern Vale Communication Corridor	Communications	Unassessed											
	HL 022	A48 Lougher to Chepstow communication co	Communications	Unassessed											
	HL 032	Llanccarfan	Irregular Fields	Unassessed											
	HL 040	Old Beupre	Nucleated Settlement	Unassessed											
	HL 049	Thaw River Valley	Water & Wetland	Unassessed											
	HL 052	Llysworney and Llandough	Regular Fields	Unassessed											
Cultural	CL 003	W Aberthaw Power Station, Cement Works	Industrial	Outstanding	H	H	U	U	H	U	U	U	O		Apparently well maintained as befits large industrial area.
	CL 008	Cowbridge and Llanblethian	Places	Outstanding	H	M	O	U	H	H	L	H	U		It appears that planning development is being restricted. Limit the development of light industry and housing.
	CL 028	Rural Village Conservation Areas	Institutions	Outstanding	M	H	L	M	O	H	L	L	U		Ensure designation affords protection. Continue to police designated areas
	CL 039	Vale of Glamorgan Rural Landscape	Rural	High	H	O	L	U	O	H	L	H	L		Maintain consistent planning policies to preserve the landscape.

LANDSCAPE CHARACTER AREA 20 - LOWER WAYCOCK VALLEY

Plan



Photographs



Llancarfan church



River Waycock at Penmark Place

Description

Enclosed lowland valley, part of a wider valley system that runs into the adjacent Thaw valley. Characterised by extensive areas of woodland interspersed with scattered houses and farmsteads. It includes the settlement of Llancarfan, which with its hinterland is one of the best surviving and most complete examples of the historic landscape of the Vale as a whole, reflecting the Anglo-Norman influence on settlement patterns and land management.

Geological Landscapes

Part of a larger active lowland river system that includes the Nant Llancarfan, Lower Waycock and Kenson rivers. These lie in narrow, steeply sided valleys cut into the Lias plateau of this part of the Vale.

Landscape Habitats

A mosaic of floodplain, riparian, grasslands and woodlands associated with this network of streams and rivers.

Visual and Sensory Landscapes

A network of steep sided, enclosed lowland valleys (aspect area VS453) with a mixture of tranquil streams, valley side woodlands and small farms. There is a mosaic pattern of small, hedge bounded fields with substantial areas of woodland, usually on the steeper valley sides (eg: Coed Quinett, Breach Wood, Coed y Crinallt and Kenson Wood). The main settlements are at Penmark and Llancarfan, together with a pattern of scattered farmsteads. It gives the appearance of a well maintained landscape within the framework of a sense of tranquillity and enclosure.

Historic and Cultural Landscapes

The settlement and area around Llancarfan (aspect areas HL032 and CI021) is a nationally important example of the effects of the Anglo Norman tradition upon the pattern and character of the landscape. This is recognised by its inclusion on the Register of Landscapes of Outstanding Historic Importance in Wales.

Key Policy and Management Issues

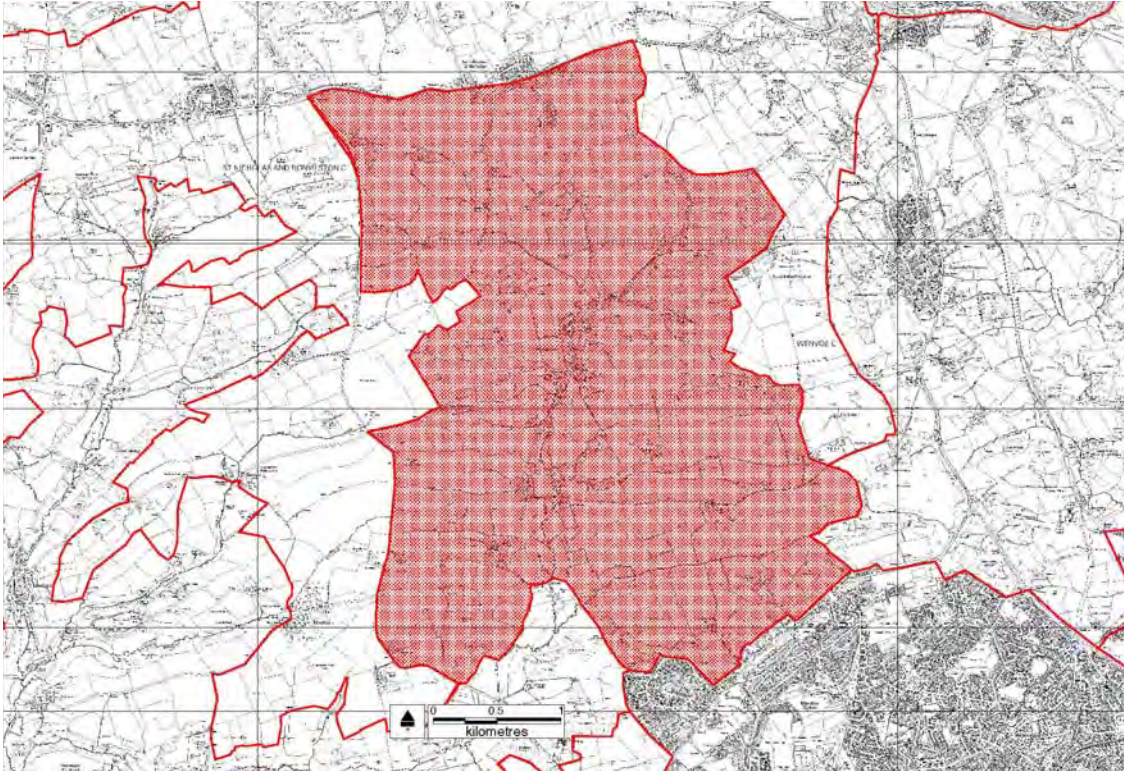
- Longer term management of valley side woodlands.
- Retention and management of the agricultural landscape pattern and features.
- Impact of development upon settlement form and character.
- Longer term management of the identified historic landscape importance of the Llancarfan area as identified in the CCW/CADW/ICOMOS register.

LCA 20 Lower Waycock Valley

Aspect	Aspect Area	Area Name	Description	Overall Evaluation	Evaluation Criteria									Management Issues	
					1	2	3	4	5	6	7	8	9		
Geological	GL 170	Moulton	Lowland plateau	Moderate	L	L	M	L							Conserve existing geomorphological integrity
	GL 282	St. Hilary	Other	High	M	M	M	L							Conserve existing geomorphological integrity
	GL 514	Thaw-Waycock	Active lowland river-flood plain system	Moderate	M	L	L	L							Conserve existing geomorphological integrity
	GL 962	Barry-Rhose	Lowland plateau	High	H	M	M	M							Conserve existing geomorphological integrity
Landscape Habitats	LH 582	Ogmore-Llantwit Arable Belt	Mosaic	Moderate	M	L	M	U	L	M	L	H			The provision of set aside buffer strips at the edges of the arable fields and sympathetic management of field boundaries would increase biodiversity interest.
	LH 786	Aberthaw River Valleys	Mosaic	High	H	O	M	U	U	H	H	H			Existing management generally appropriate.
	LH 839	Aberthaw	Mosaic	Moderate	M	M	U	U	U	U	M	M			Unassessed
	LH 840	Rhose-Moulton	Mosaic	Moderate	M	M	U	U	U	M	M	M			Sympathetic management of hedgerows in particular may help to increase connectivity within and between local aspect areas.
	LH 958	Barry North	Mosaic	Moderate	H	O	M	U	U	M	M	M			Existing management generally appropriate.
Visual and Sensory	VS 146	Central Vale Ridges and Slopes	Mosaic Rolling Lowland	High	M	M	M	M							Area in general well managed. Enhance woodland and hedgerow cover
	VS 453	Llancarfan and Waycock Valleys	Mosaic Lowland Valleys	High	H	H	H	H							Generally appropriate, some scrub invasion. Retain and enhance intrinsic character through woodland management.
	VS 608	Upper Waycock Valley/Dyffryn Area	Open Lowland Valleys	High	M	H	H	M							Maintain rural character.
	VS 641	Rhose Hinterland	Mosaic Rolling Lowland	Moderate	M	M	M	M							Hedgerows in decline. Improve field boundary management.
Historical Landscapes	HL 002	Southern Vale Communication Corridor	Communications	Unassessed											
	HL 032	Llancarfan	Irregular Fieldscapes	Unassessed											
	HL 038	Fonmon Castle	Nucleated Settlement	Unassessed											
Cultural	CL 021	Llancarfan	Institutions	Outstanding	L	H	L	U	H	H	L	H	U		Protective designations allow for strong landscape management. Continue as now with high vigilance in relation to inappropriate development
	CL 028	Rural Village Conservation Areas	Institutions	Outstanding	M	H	L	M	O	H	L	L	U		Ensure designation affords protection. Continue to police designated areas
	CL 039	Vale of Glamorgan Rural Landscape	Rural	High	H	O	L	U	O	H	L	H	L		Maintain consistent planning policies to preserve the landscape.
	CL 040	Fonmon Castle	Customs	Moderate	L	O	H	U	M	O	L	U	L		Continue as now.

LANDSCAPE CHARACTER AREA 21 - UPPER WAYCOCK VALLEY AND DUFFRYN

Plan



Photographs



Towards Home Farm, Duffryn

Description

The upper reaches of the Waycock Valley running northwards from where the A4226 crosses the valley up to the A48(T) road corridor. It includes the Waycock River, together with its tributaries – Nant Bran and Goldsland Brook. At its centre is the village of Duffryn and the associated formal gardens of Duffryn House, which form the grandest and most outstanding Edwardian Gardens in Wales. The northern boundary of the LCA is extended to a defensible boundary, rather than relating to specific aspect areas.

Geological Landscapes

Upper reaches of an active lowland river system (aspect area GL282) which dissects the limestone plateau. It forms part of a much wider river system in this part of the Vale which runs into the Thaw south of Llancadle.

Landscape Habitats

A wide range of lowland habitats including grasslands, hedgerows, hedgerow trees, woodlands and riparian features. Typical of much of the farmed Vale. It also includes the formal features associated with Duffryn Gardens.

Visual and Sensory Landscapes

The Upper Waycock (aspect area VS608) is a broad, gently sloping valley traversed by several minor watercourses. The LCA runs up to some 100m AOD on the line of the A48(T) road, with the valley floor extending down to some 20m AOD. It is characterised by a mosaic of mostly pastoral fields, with some arable use, enclosed in a matrix of well managed hedgerows with hedgerow trees. There are extensive areas of woodland spread about the LCA, actually on the upper slopes of the valley sides - Lidmore Wood. The main settlement within the LCA is Duffryn, an attractive stone village with its associated formal gardens at Duffryn House. The LCA is covered by a network of minor roads and rights of way, whilst along its southern boundary as at Colcot and Barry there are increased visual and aural detractors.

Historic and Cultural Landscapes

The bulk of the LCA reflects the patterns of development of the agricultural landscape found across the Vale. An important feature is the formal gardens at Duffryn House. Designed by the eminent garden designer Thomas Mawson, they are included on the Register of Landscapes, Parks and Gardens of Special Interest in Wales.

Key Policy and Management Issues

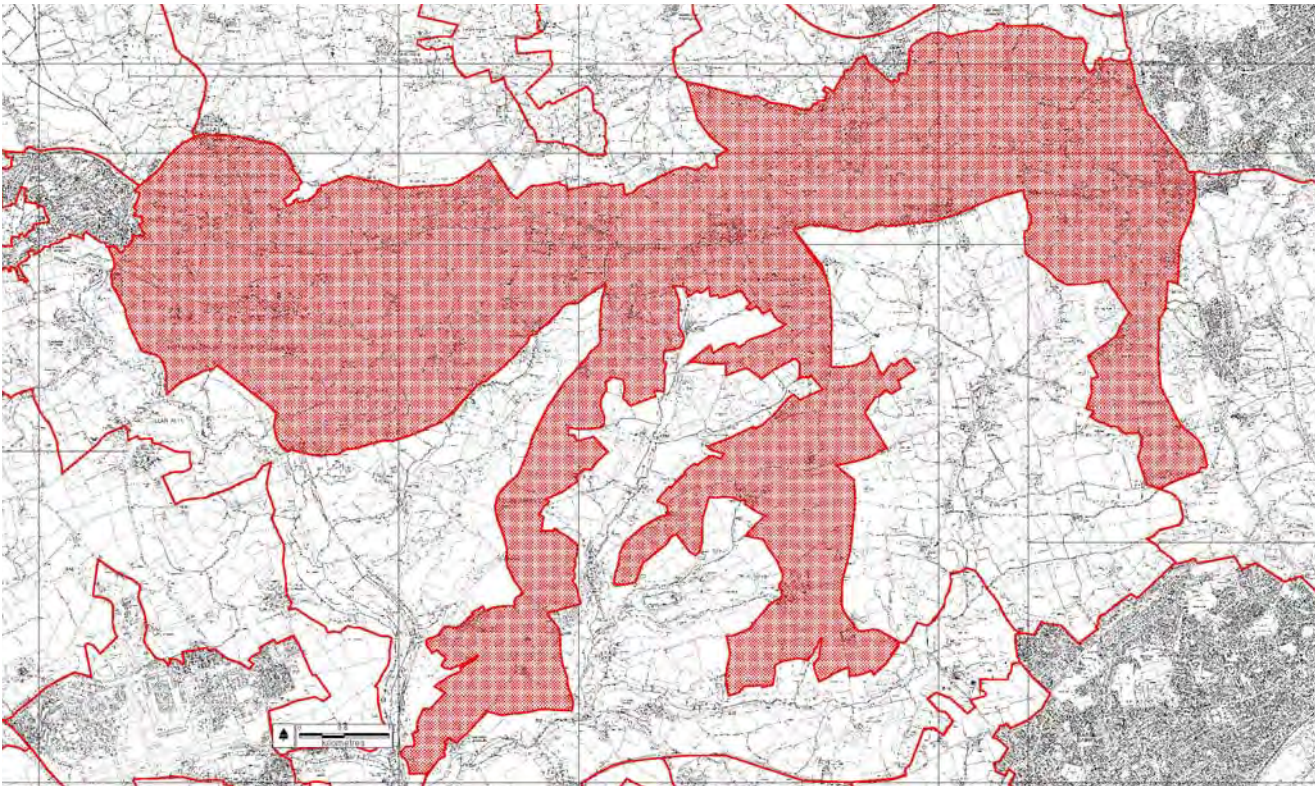
- Longer term management of woodlands.
- Management of the well established agricultural landscapes.
- Settlement edge management along the interface with Barry.
- Longer term sustainability of Duffryn Gardens.

**LCA 21 Upper
Waycock Valley &
Duffryn**

Aspect	Aspect Area	Area Name	Description	Overall Evaluation	Evaluation Criteria									Management Issues	
					1	2	3	4	5	6	7	8	9		
Geological	GL 170	Moulton	Lowland plateau	Moderate	L	L	M	L							Conserve existing geomorphological integrity
	GL 282	St. Hilary	Other	High	M	M	M	L							Conserve existing geomorphological integrity
	GL 514	Thaw-Waycock	Active lowland river-flood plain system	Moderate	M	L	L	L							Conserve existing geomorphological integrity
	GL 749	Wenvoe	Lowland escarpment	High	H	M	M	L							Conserve existing geomorphological integrity
	GL 962	Barry-Rhose	Lowland plateau	High	H	M	M	M							Conserve existing geomorphological integrity
Landscape Habitats	LH 786	Aberthaw River Valleys	Mosaic	High	H	O	M	U	U	H	H	H			Existing management generally appropriate.
	LH 840	Rhose-Moulton	Mosaic	Moderate	M	M	U	U	U	M	M	M			Sympathetic management of hedgerows in particular may help to increase connectivity within and between local aspect areas.
	LH 958	Barry North	Mosaic	Moderate	H	O	M	U	U	M	M	M			Existing management generally appropriate.
Visual and Sensory	VS 146	Central Vale Ridges and Slopes	Mosaic Rolling Lowland	High	M	M	M	M							Area in general well managed. Enhance woodland and hedgerow cover
	VS 271	St Nicholas and Bonvilston Ridge Crest	Mosaic Rolling Lowland	High	H	M	M	H							Agricultural management generally good. Maintain tree cover on ridge line to integrate development.
	VS 608	Upper Waycock Valley/Dyffryn Area	Open Lowland Valleys	High	M	H	H	M							Maintain rural character.
Historical Landscapes	HL 022	A48 Lougher to Chepstow communication co	Communications	Unassessed											
	HL 027	Dyffryn Gardens	Designed Parkland/Garden	Unassessed											
	HL 050	Dyffryn	Regular Fieldsapes	Unassessed											
Cultural	CL 028	Rural Village Conservation Areas	Institutions	Outstanding	M	H	L	M	O	H	L	L	U		Ensure designation affords protection. Continue to police designated areas
	CL 030	Dyffryn Gardens	Customs	High	H	H	H	H	L	H	L	H	H		The Unitary Authority has taken the commendable step of investing in the restoration of the Gardens as a leisure amenity. Continue to seek a solution to the future of Dyffryn House
	CL 039	Vale of Glamorgan Rural Landscape	Rural	High	H	O	L	U	O	H	L	H	L		Maintain consistent planning policies to preserve the landscape.

LANDSCAPE CHARACTER AREA 22 - CENTRAL VALE RIDGES AND SLOPES

Plan



Photographs



Vale and ridge landscape near Bonvilston

Description

A large area of undulating hilly terrain that runs east west from Cowbridge, around the top of the Upper Waycock Valley towards the unitary authority boundary at Culverhouse Cross and including the Wenvoe area, and down to the confluence of the Thaw and Waycock at Llancadle. It forms an important ridgeline across the central Vale landscape, largely agricultural in land use. It affords long distance views across the wider Vale landscape. The LCA is dissected by the A48(T) road which follows the ridgeline across the area. The ridge crest was previously designated as a separate LCA but it has now been combined within this LCA as it is part of a larger geological feature and was not sufficiently significant visually to justify a separate landscape character area.

Geological Landscapes

An area of undulating Lias plateau (aspect area GL942) dissected by the Thaw-Waycock lowland river system. The area rises to 115-125m AOD and forms the background context to the wider river system.

Landscape Habitats

A largely agricultural area it exhibits a range of dry terrestrial habitats, with areas of arable cultivation and grassland, bounded by hedgerows and hedgerow trees. Woodland areas, mostly deciduous, found on the higher ground to the north.

Visually and Sensory Landscapes

The LCA is an area of lowland plateau with a series of enclosed valleys created by the Thaw - Waycock river system. Its northern portion (aspect area VS271) forms a visually important ridgeline in the Bonvilston/St Nicholas area which rises to 137m AOD at Pantylladron between Cowbridge and Bonvilston. This affords extensive views across the Vale. The area is a mixture of arable and pastoral farming within a matrix of hedgerows with hedgerow trees. Field sizes are medium to large, giving an extensive open feel to the area. There are a number of scattered settlements and farms, with the main settlements straddling the A48 corridor. The eastern edge of the LCA which follows the authority boundary includes the developed commercial area at Culverhouse Cross, below Tumbledown. There are some prominent woodland blocks along the northern edge of the LCA eg: Cottrell Wood, Coedarhydyglyn, and Coed Mynydd Coch.

Historic and Cultural Landscapes

Falls within the extensive rural Vale cultural aspect area (CL039), which reflects the agricultural development of the area and its resultant effects upon the landscape. The A48(T) follows the course of an important Roman road route across South Wales. Llantrithyd Place, which forms a remarkable example of an unaltered sixteenth century garden and seventeenth century deer park lies within the LCA and is included on the Register of Landscapes, Parks and Gardens of Special Historic Interest in Wales. Association with public entertainment with the location of the Wenvoe TV transmitter, near Downs.

Key Policy and Management Issues

- Retention of the integrity of the agricultural landscape character through management of its principal elements.
- Longer term management of woodlands.
- Integration of settlement edge / new development.
- Management of historic landscape features.

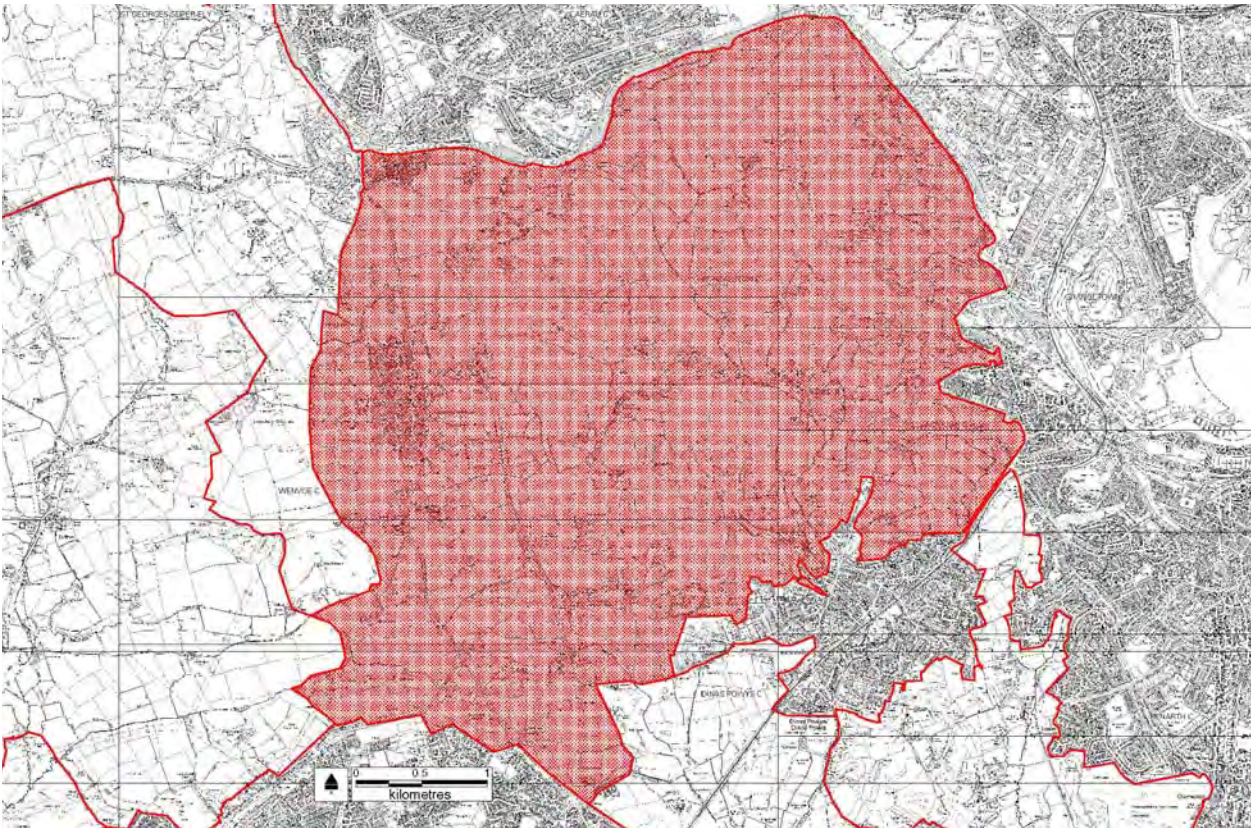
LCA 22 Central
Vale Ridges &
Slopes

Aspect	Aspect Area	Area Name	Description	Overall Evaluation	Evaluation Criteria									Management Issues	
					1	2	3	4	5	6	7	8	9		
Geological	GL 170	Moulton	Lowland plateau	Moderate	L	L	M	L							Conserve existing geomorphological integrity
	GL 263	Pendoylan Moors-Ely	Active lowland river-flood plain system	Moderate	M	L	M	L							Conserve existing geomorphological integrity
	GL 282	St. Hilary	Other	High	M	M	M	L							Conserve existing geomorphological integrity
	GL 514	Thaw-Waycock	Active lowland river-flood plain system	Moderate	M	L	L	L							Conserve existing geomorphological integrity
	GL 532	Pendoylan	Lowland till plain / field	High	H	M	M	M							Conserve existing geomorphological integrity
	GL 614	Coed Hills	Lowland plateau	Moderate	M	L	M	L							Conserve existing geomorphological integrity
	GL 658	Penllyn Moor	Active lowland river-flood plain system	High	H	M	M	M							Conserve existing geomorphological integrity
	GL 749	Wenvoe	Lowland escarpment	High	H	M	M	L							Conserve existing geomorphological integrity
	GL 953	Llanbethery	Lowland plateau	Moderate	L	L	L	M							Conserve existing geomorphological integrity
Landscape Habitats	LH 118	Cowbridge East	Mosaic	Moderate											Less intensive agricultural management desirable.
	LH 160	Coed Mynydd-coch	Mosaic	High	H	M	M	U	U	H	H	U			Unassessed
	LH 403	Ely Valley	Mosaic	High	H	H	U	U	H	L	H	H			Unassessed
	LH 436	Cowbridge South - Thaw Valley	Mosaic	High	H	M	U	U	U	M	H	H			Unassessed
	LH 582	Ogmore-Llantwit Arable Belt	Mosaic	Moderate	M	L	M	U	L	M	L	H			The provision of set aside buffer strips at the edges of the arable fields and sympathetic management of field boundaries would increase biodiversity interest.
	LH 616	Stalling Down Bryn Owen	Mosaic	Moderate	M	M	M	U	M	L	H	U			Greater control of bracken within the aspect area would be beneficial.
	LH 786	Aberthaw River Valleys	Mosaic	High	H	O	M	U	U	H	H	H			Existing management generally appropriate.
	LH 958	Barry North	Mosaic	Moderate	H	O	M	U	U	M	M	M			Existing management generally appropriate.
	Visual and Sensory	VS 110	Lower Thaw valley sides	Mosaic Lowland Valleys	High	H	M	H	H						
VS 146		Central Vale Ridges and Slopes	Mosaic Rolling Lowland	High	M	M	M	M							Area in general well managed but need for enhancing woodland and hedgerow cover
VS 271		St Nicholas and Bonvilston Ridge Crest	Mosaic Rolling Lowland	High	H	M	M	H							Agricultural management generally good. Maintain tree cover on ridge line to integrate development.
VS 453		Llancarfan and Waycock Valleys	Mosaic Lowland Valleys	High	H	H	H	H							Generally appropriate, some scrub invasion. Retain and enhance intrinsic character through woodland management.
VS 608		Upper Waycock Valley/Dyffryn Area	Open Lowland Valleys	High	M	H	H	M							Maintain rural character.
VS 614		St Nicholas and Bonvilston Ridge Slopes	Mosaic Lowland Valleys	High	H	M	H	H							Broadleaf tree cover is old and deteriorating. Develop woodland cover and hedgerows for better integration.
VS 683		Ely Valley	Mosaic Rolling Lowland	High	H	H	M	M							Hedgerows poor in places. Maintain rural character of valley.
VS 817		Stalling and St Hilary Downs	Open Rolling Lowland	High	H	M	H	H							Balance recreation and commoners needs and screen development.
VS 952		Nant Tre Gof Valley	Mosaic Lowland Valleys	Moderate	M	H	M	M							Well maintained rural area. Maintain rural character.

Historical Landscapes	HL 022	A48 Lougher to Chepstow communication corridor	Communications	Unassessed															
	HL 032	Llancarfan	Irregular Fieldsapes	Unassessed															
	HL 039	Llantrithyd Place	Nucleated Settlement	Unassessed															
	HL 048	Staling Down North	Marginal Land	Unassessed															
	HL 050	Dyffryn	Regular Fieldsapes	Unassessed															
	HL 054	Llangan Welsh St Donats and Pendoylan	Regular Fieldsapes	Unassessed															
	HL 056	Coedarhydyglyn	Nucleated Settlement	Unassessed															
Cultural	CL 019	Culverhouse Cross	Urban	Outstanding	H	H	L	U	H	H	H	U	L	Work on a long term, creative strategy for the formulation of solutions and apply them as circumstances permit					
	CL 020	Communications: A48	Infrastructure	High	H	H	L	O	H	U	M	U	U	Prepare long-term plans for the management of the infrastructure.					
	CL 021	Llancarfan	Institutions	Outstanding	L	H	L	U	H	H	L	H	U	Protective designations allow for strong landscape management. Continue as now with high vigilance in relation to inappropriate development.					
	CL 022	Ely Valley SSSI	Institutions	Outstanding	L	H	L	U	M	H	L	U	O	Designation affords protection.					
	CL 028	Rural Village Conservation Areas	Institutions	Outstanding	M	H	L	M	O	H	L	L	U	Ensure designation affords protection. Continue to police designated areas.					
	CL 029	Wenvoe	Places	High	M	H	L	O	H	H	U	H	U	It is assumed, without formal assessment, that middle class values will ensure continuation of the present management regime					
	CL 031	Peterston-super-Ely & Wyndham Park	Institutions	High	L	H	H	U	H	M	U	H	U	The application of planning policies appears to be appropriate. Consider the designation of Wyndham Park (or parts of).					
	CL 039	Vale of Glamorgan Rural Landscape	Rural	High	H	O	L	U	O	H	L	H	L	Maintain consistent planning policies to preserve th[e] landscape.					

LANDSCAPE CHARACTER AREA 23 - CWRT YR ALA LOWLANDS

Plan



Photographs



Gilberts Lane



From track Wrinstone Farm, looking west

Description

An area of undulating lowland valleys and hills on the eastern edge of the Vale. Bounded on the north and east by the A4232 road and the settlement edge at Llandough. It is focused upon the axis of Wrinstone Brook (Cwrt yr Ala valley) and the Cadoxton River. Rising up to 115m AOD (Cock Hill) it includes Wenvoe Quarry and the settlement of Wenvoe. The steeply sloped valley sides are cloaked in extensive areas of woodland and Leckwith Woods, although distinctive, are included within the larger LCA as they are part of wider aspect areas in all but the Cultural Landscape, and because of their connectivity with further woodland areas. The aspect boundaries also lead to the inclusion of the Cwrt-yr-Ala basin within the greater LCA.

Geological Landscapes

An area of lowland scarp and deep slopes (aspect area GL238) it is underlain by deposits of mud rock (Triassic) and alternating limestone and shale deposits (lower Jurassic). These latter deposits form the low tabular hills characteristic of the LCA, with the steep valley sides underlain by the Triassic rocks.

Landscape Habitats

An area of dry terrestrial habitats of lowland meadows, grasslands, it has a large extent of deciduous / mixed woodland, with some prominent woodland areas eg. Leckwith Woods, Coed y Ddylluan, Park Wood, Coed Twmlw and Coed y Eglwys. They form a dominant landscape element to the north of Dina Powys and Llandough, and are widely visible in the surrounding landscape.

Visual and Sensory Landscapes

An area of rolling, undulating landscape (aspect area VS596) focused on the Cwrt-yr-Ala valley which forms the headwater of the Cadoxton Valley. It is an intimate landscape of pastoral fields, hedgerows and woodlands, the latter forming an important landscape element and generally found on the steeper valley sides or ridgelines. Main settlements are Wenvoe and Michaelson-le-Pit, otherwise an area of dispersed farms and houses, notwithstanding its proximity to Cardiff, Llandough and Dinas Powys. The area has few roads, and is generally tranquil. It has a strong sense of place, with vernacular buildings and a sense of being a well managed area.

Historic and Cultural Landscapes

Falls within the broad cultural aspect area (CL035) associated with the agricultural development of the rural Vale. Cwrt-yr-Ala noted for its fine gardens, and in particular its water features is included on the Register of Landscapes, Parks and Gardens of Special Historic Interest in Wales.

Key Policy and Management Issues

- Longer term management of woodland areas.
- Management of Cwrt-yr-Ala complex, retaining its historical integrity.
- Integration of new development on settlement edges into landscape.
- Degradation of landscape features due to proximity of settlement.

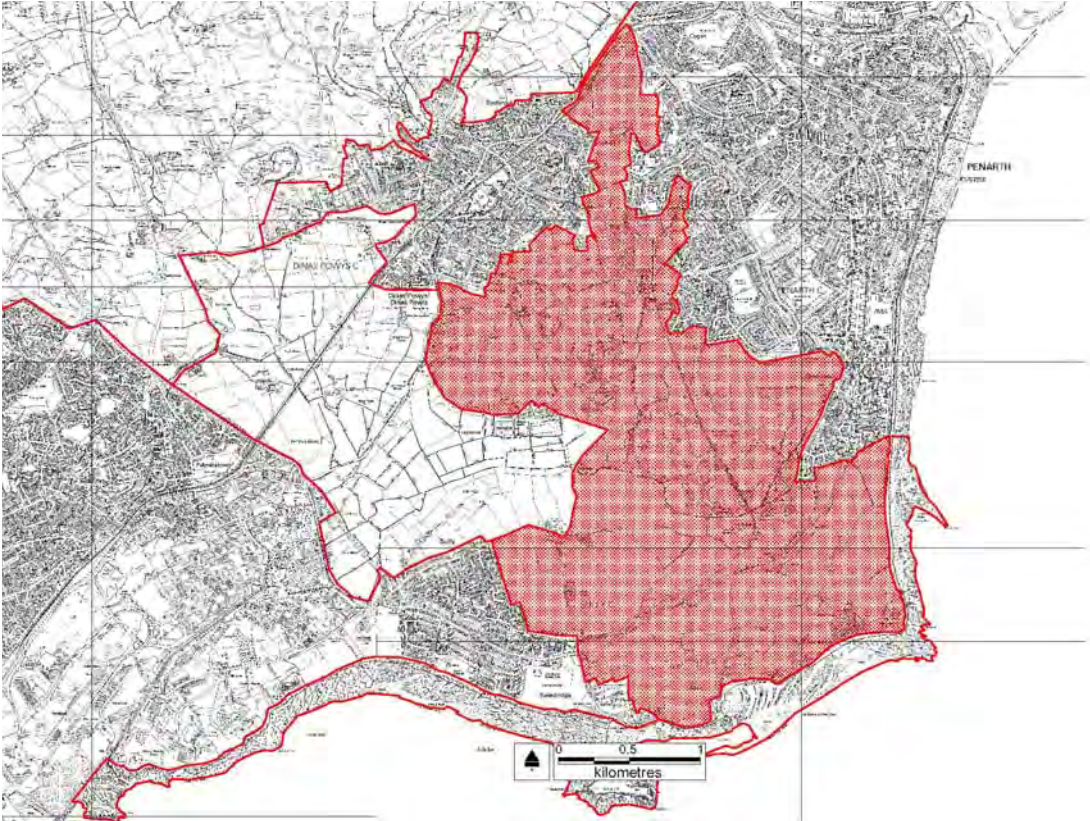
LCA 23 Cwrt-yr-Ala
Lowlands

Aspect	Aspect Area	Area Name	Description	Overall Evaluation	Evaluation Criteria									Management Issues	
					1	2	3	4	5	6	7	8	9		
Geological	GL 108	Barry Docks-Cog Moors	Engineered features and reclaimed / infilled land	Low	L	L	L	L							Construction and expansion of Barry Docks and associated industrial facilities, including reclamation of estuary and former saltmarsh has removed the natural character of much of the Aspect Area... Small areas with traces of former saltmarsh channels locally survive however and conservation of such areas, including their sediment record of Quaternary climate change, could ensure that total loss of this record does not occur...
	GL 238	Penarth	Lowland escarpment	Moderate	L	L	M	L							Conserve existing geomorphological integrity
	GL 532	Pendoylan	Lowland till plain / field	High	H	M	M	M							Conserve existing geomorphological integrity
	GL 749	Wenvoe	Lowland escarpment	High	H	M	M	L							Conserve existing geomorphological integrity
	GL 962	Barry-Rhose	Lowland plateau	High	H	M	M	M							Conserve existing geomorphological integrity
Landscape Habitats	LH 684	Cog Moors	Mosaic	High	H	M	U	U	M	U	H	M		Unassessed	
	LH 958	Barry North	Mosaic	Moderate	H	O	M	U	U	M	M	M		Existing management generally appropriate.	
	LH 988	Leckwith-Dinas Powys Woodlands	Mosaic	High	H	H	U	U	U	H	H	H		Given the presence of Dormice, connectivity of woodland habitat within the landscape is essential. Ensure inter-connectivity is maintained and developed between woodland blocks.	
Visual and Sensory	VS 213	Southern Eley Valley	Wooded Lowland Valleys	High	H	H	H	H						Woodlands look unmanaged in parts and slope stabilisation appears to be required... Commercial sites are detractors and unscreened...Woodland managed to maintain continuous tree cover, especially on skyline	
	VS 596	Cwrt-yr-Ala Valley	Mosaic Lowland Valleys	High	H	H	H	H						Farmland generally well managed but signs of urban fringe encroachment. Maintain rural qualities and vegetated nature of valley.	
	VS 608	Upper Waycock Valley/Dyffryn Area	Open Lowland Valleys	High	M	H	H	M						Current agricultural regime positive. Maintain rural character.	
	VS 614	St Nicholas and Bonvilston Ridge Slopes	Mosaic Lowland Valleys	High	H	M	H	H						Broadleaf tree cover is old and deteriorating. Develop woodland cover and hedgerows.	
	VS 620	Wenvoe Environs	Mosaic Lowland Valleys	Moderate	M	M	M	M						Key issue is erosion of rural character. Reinforce rural character of area.	
	VS 696	Wenvoe	Urban	Moderate	L	M	M	L						Well managed settlement. Maintain vegetational cover within town.	
Historical Landscapes	HL 013	Penarth and Dinas-Powys Urban	Nucleated Settlement	Unassessed											
	HL 019	Eastbrook	Regular Fieldscapes	Unassessed											
	HL 020	Cwrt-yr-ala Park and environs	Designed Parkland/Garden	Unassessed											
	HL 021	Wenvoe Quarries	Extractive	Unassessed											
	HL 023	Wenvoe	Nucleated Settlement	Unassessed											
	HL 024	Michaelston-le-Pit and St Andrews Major	Irregular Fieldscapes	Unassessed											
	HL 025	Leckwith and Cwm Cydfin	Woodland	Unassessed											
	HL 026	Wenvoe Castle	Designed Parkland/Garden	Unassessed											

Cultural	CL 012	Barry	Urban	High	H	H	L	U	M	H	L	H	U	Although unassessed in detail, the visible signs of regenerative activity suggest a planned approach to the management of the built landscape
	CL 016	Dinas Powys	Urban	Moderate	M	M	M	U	M	H	L	M	U	Individual house owners manage their properties well. Continue as now
	CL 017	Llandough	Infrastructure	High	H	H	L	U	U	U	U	U	U	Seek funds to maintain fabric to a good standard.
	CL 019	Culverhouse Cross	Urban	Outstanding	H	H	L	U	H	H	H	U	L	Work on a long term, creative strategy for the formulation of solutions and apply them as circumstances permit
	CL 028	Rural Village Conservation Areas	Institutions	Outstanding	M	H	L	M	O	H	L	L	U	Ensure designation affords protection. Continue to police designated areas
	CL 029	Wenvoe	Places	High	M	H	L	O	H	H	U	H	U	It is assumed, without formal assessment, that middle class values will ensure continuation of the present management regime
	CL 039	Vale of Glamorgan Rural Landscape	Rural	High	H	O	L	U	O	H	L	H	L	Maintain consistent planning policies to preserve the landscape.

LANDSCAPE CHARACTER AREA 24 - SULLY RIDGE / COSMESTON

Plan



Photographs



Sully ridge looking towards the B4267 between Sully and Upper Cosmeston

Description

An area of higher ground, including Sully, Cosmeston, Pophill and the Downs located between Barry, Dinas Powys and Penarth. To the north it is bounded by Cog Moors (LCA 17) and to the south and west by the coastal edge and foreshore (LCA 6). A generally agricultural area, it includes Cosmeston Lakes Country Park, together with recreational landscapes such as the Golf Course on Downs. The B4267 runs across the area and offers views out across the Vale, at Swanbridge to the east of Sully extensive views across the Bristol Channel are afforded. The stretch of coastline from the northern boundary to the UA boundary is excluded from LCA designation due to its proximity, and resultant character, with adjacent urban development.

Geological Landscapes

An area of Triassic rocks, the majority of the area forms an elongated headland, running out at Lavernock Point generally rising up to 50m AOD (Downs and Pop Hill) the area is underlain by carboniferous limestone.

Landscape Habitats

A mosaic of lowland terrestrial habitats, the area is mainly given over to agriculture. There are important water bodies and woodlands at Cosmeston Lakes, a former quarry site, and small areas of woodland on the side slopes of the ridge.

Visual and Sensory Landscapes

An elevated area offering extensive views out across the Vale and Bristol Channel. It has a sense of exposure and a coastal edge landscape with sparse, windblown vegetation mainly pastoral in use, the field boundaries are formed by well maintained hedges. Important recreational landscapes at Cosmeston Lakes and the adjacent Downs Golf Course. Close to the settlements more disturbance and disruption to the landscape with the visual settlement edge issues of litter, fly tipping, discordant boundaries.

Historic and Cultural Landscapes

Part of the wider Vale cultural aspect area (CL039), Cosmeston Lakes is an important recreational landscape feature within the Vale.

Key Policy and Management Issues

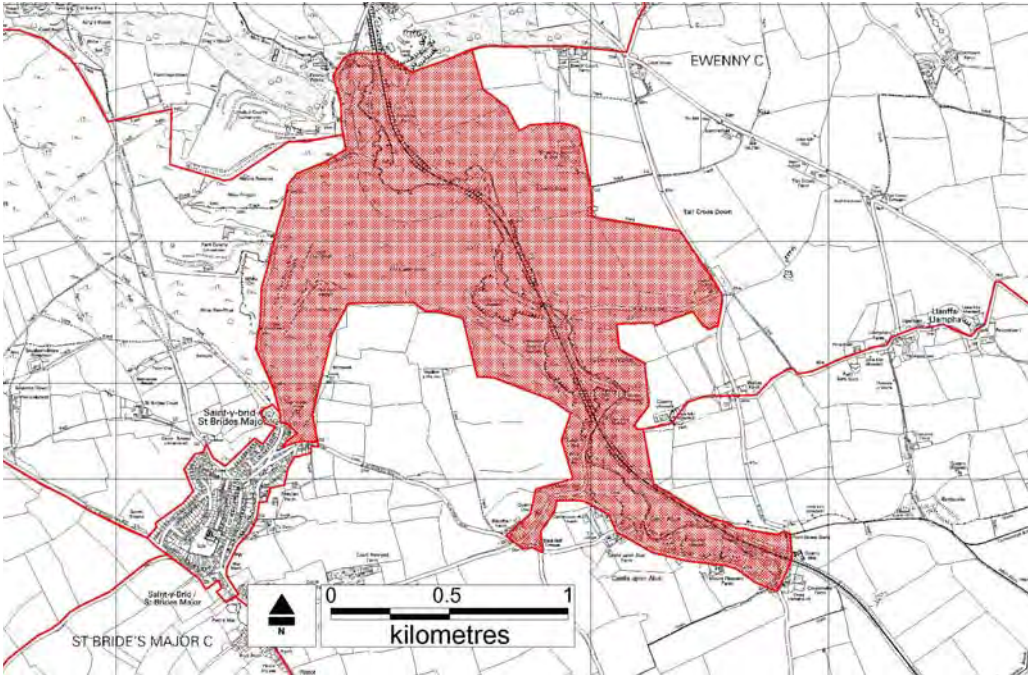
- Management of agricultural landscape elements.
- Degradation of settlement edge landscape.
- Pressure to intensify recreational developments.
- Longer term management of Cosmeston Lakes Country Park.
- Integration of new development into the landscape.

LCA 24 Sully
Ridge &
Cosmeston

Aspect	Aspect Area	Area Name	Description	Overall Evaluation	Evaluation Criteria									Management Issues	
					1	2	3	4	5	6	7	8	9		
Geological	GL 108	Barry Docks-Cog Moors	Engineered features and reclaimed / infilled land	Low	L	L	L	L							Construction and expansion of Barry Docks and associated industrial facilities, including reclamation of estuary and former saltmarsh has removed the natural character of much of the Aspect Area... Small areas with traces of former saltmarsh channels locally survive however and conservation of such areas, including their sediment record of Quaternary climate change, could ensure that total loss of this record does not occur...
	GL 238	Penarth	Lowland escarpment	Moderate	L	L	M	L							Conserve existing geomorphological integrity
	GL 955	Sully	Undulating lowland hill terrain	Moderate	L	L	M	L							Conserve existing geomorphological integrity
Landscape Habitats	LH 135	Cog	Mosaic	Low	L	L	H	U	L	L	L	U			Intensively managed habitat of limited value for wildlife.
	LH 376	Swanbridge	Mosaic	Moderate	M	M	U	U	M	M	M	U			The aspect area would benefit from improved connectivity.
	LH 684	Cog Moors	Mosaic	High	H	M	U	U	M	U	H	M			Unassessed
	LH 814	Penarth	Residential/Green Space	Low	L	U	U	U	U	U	L	U			Encourage 'wildlife-friendly' gardening practices.
	LH 928	Cosmeston Park	Mosaic	High	H	H	U	U	U	U	H	M			Unassessed
	LH 932	Dinas Powys South	Mosaic	High	H	M	U	U	U	H	H	H			Unassessed
Visual and Sensory	VS 152	Penarth	Urban	Moderate	M	M	H	M							Buildings at core are well maintained. New development is controlled but is of lower quality in places than core. Improve and manage topographical green spaces at entry to town.
	VS 473	Penarth and Dinas Powys Urban Fringe	Mosaic Rolling Lowland	Moderate	M	M	M	L							Urban fringe problems and use of land for horses has eroded character. Maintain green wedge, improve management of boundaries.
	VS 532	Cosmeston Country Park and Golf Course	Open Rolling Lowland	Moderate	M	M	M	H							Management needs to cope with user pressure- erosion of quality in parts. Optimising the usage of the sites for the public while protecting the resource. Important pine skyline needs conservation and replacement planting.
	VS 637	Sully Ridge	Open Rolling Lowland	Moderate	H	M	M	M							Farms well maintained. Maintain current pattern of agricultural use.
	VS 787	Lavernock hinterland	Open Rolling Lowland	Moderate	M	M	M	M							Positive management of rural boundaries, planting.
Historical Landscapes	HL 006	Cosmeston Country Park	Recreational	Unassessed											
	HL 008	Sully and Dinas-Powys Moors	Regular Fieldscapes	Unassessed											
	HL 010	Lavernock	Regular Fieldscapes	Unassessed											
	HL 011	Cogan and Pop Hill	Irregular Fieldscapes	Unassessed											
	HL 013	Penarth and Dinas-Powys Urban	Nucleated Settlement	Unassessed											
Cultural	CL 013	Sully	Infrastructure	High	L	O	H	U	L	H	L	L	H		Developers are assumed to be applying high standards. Respect the architectural integrity of the buildings.
	CL 014	Cosmeston, Lavernock, Swanbridge	Customs	Low	L	L	L	U	L	U	U	L	U		Unassessed
	CL 016	Dinas Powys	Urban	Moderate	M	M	M	U	M	H	L	M	U		Individual house owners manage their properties well. Continue as now.
	CL 018	Penarth	Urban	High	M	H	H	U	L	H	L	M	U		Maintain planning policies.
	CL 039	Vale of Glamorgan Rural Landscape	Rural	High	H	O	L	U	O	H	L	H	L		Maintain consistent planning policies to preserve the landscape.

LANDSCAPE CHARACTER AREA 25 - ALUN / ST BRIDES VALLEY

Plan



Photographs



Pant St Brides to N



Pant St Brides to S



From Heol y Stepsau ford to S

Description

Relatively small confined area of steeply sided incised valleys into the limestone plateau and running into the Ewenny Valley. Isolated, secluded, with the Alun Valley being cloaked in woodland, they afford a distinctive LCA at the western edge of the Vale.

Geological Landscapes

Part of a broader outcrop of limestone which forms the western edge of the Vale, it forms a small network of steeply sided incised valleys.

Landscape Habitats

Typically lowland terrestrial habitats, grassland, scrub etc. The Alun Valley is densely wooded, and there are associated riparian habitats with the Afon Alun which runs down through the valley.

Visual and Sensory Landscapes

Narrow, V-shaped, incised valleys cut into the limestone plateau, running from 80 to 13m AOD. The Alun Valley is predominantly wooded, and despite the presence of the Bridgend-Barry railway along its length it still has a peaceful, isolated sense of place. The small river and its associated footbridges and fords giving a strong sense of place. The St Brides Valley is equally steep sided but more open in terms of vegetation, with rough pasture / bracken given over to grazing. Both valleys show evidence of quarrying, both active (Port Alun Quarry) and disused.

Historic and Cultural Landscapes

In part the valleys relate to the Ogmere Down heathland area, particularly at Rhiwforgain and the St Bride's Valley which form its eastern boundary. The Alun Valley is more related to the wider agricultural Vale landscape development.

Key Policy and Management Issues

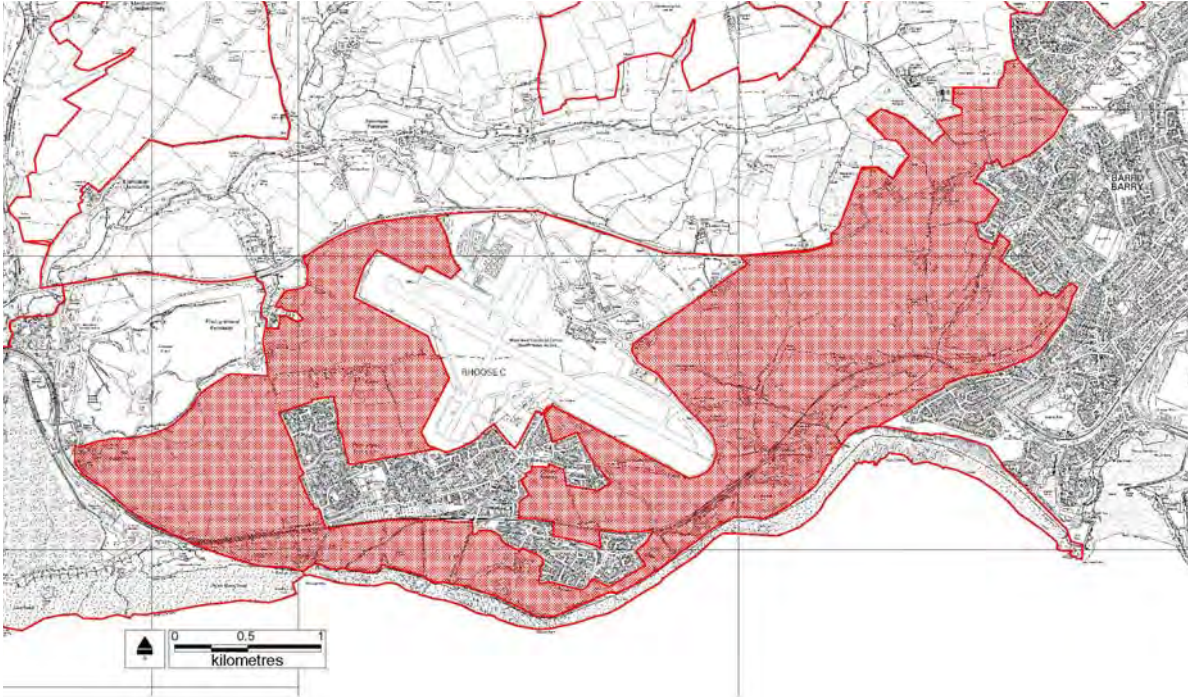
- Management of distinct woodland areas.
- Management of open, rough landscape in Pant St Brides.
- Impact of vehicles on road verges in an area of narrow lanes.

LCA 25 Alun & St Brides Valleys

Aspect	Aspect Area	Area Name	Description	Overall Evaluation	Evaluation Criteria									Management Issues	
					1	2	3	4	5	6	7	8	9		
Geological	GL 492	Ewenny-Penllyn	Other	Outstanding	O	O	O	O							Conserve existing geomorphological integrity
	GL 747	Ogmore-St. Brides	Other	Outstanding	H	O	O	O							Conserve existing geomorphological integrity
	GL 863	Llanwit-St. Athan	Lowland plateau	Moderate	M	M	M	M							Conserve existing geomorphological integrity
	GL 885	Alun-Ewenny	Active lowland river-flood plain system	Moderate	H	L	M	M							Conserve existing geomorphological integrity
Landscape Habitats	LH 385	Cwm Alun	Mosaic	Outstanding	H	H	U	U	U	M	H	O			Unassessed
	LH 582	Ogmore-Llantwit Arable Belt	Mosaic	Moderate	M	L	M	U	L	M	L	H			The provision of set aside buffer strips at the edges of the arable fields and sympathetic management of field boundaries would increase biodiversity interest.
	LH 659	Old Castle Down	Mosaic	Outstanding	O	O	U	U	U	U	O	O			CCW and others such as Butterfly Conservation encourage active management of the site. Grazing and selective management of vegetation to encourage biodiversity interest. Management of vegetation to discourage uncontrolled fires.
Visual and Sensory	VS 378	Alun Valley	Wooded Lowland Valleys	High	H	M	H	M							Area appears uncared for in parts. Manage broadleaf woodland and semi natural vegetation.
	VS 663	Ogmore and Old Castle Downs	Open Rolling Lowland	Outstanding	O	M	O	H							Minimal management intervention except golf course. Optimise semi-natural vegetation
	VS 805	Lias Plateau	Open Rolling Lowland	Moderate	M	M	M	M							Intensive farming reducing interest in landscape. Introduce cover and interest into landscape
Historical Landscapes	HL 034	Ogmore Down	Marginal Land	Unassessed											
	HL 051	Llandow Rural	Irregular Fieldsapes	Unassessed											
Cultural	CL 007	Ewenny Quarry	Industrial	High	L	U	L	U	H	U	U	L	U		Apparently well run, with limited impact on the surrounding land. Continue as now within the buffer zones identified.
	CL 009	Vale of Glamorgan Railway	Infrastructure	High	M	H	H	U	L	H	L	U	M		Assumed to be good and appropriate. Continue to maintain and promote use of the line
	CL 039	Vale of Glamorgan Rural Landscape	Rural	High	H	O	L	U	O	H	L	H	L		Maintain consistent planning policies to preserve the landscape.

LANDSCAPE CHARACTER AREA 26 - RHOOSE – PORTHKERRY HINTERLAND

Plan



Photographs



Looking east in the vicinity of Model farm, to the east of Cardiff International Airport

Description

A small area of coastal plateau between Aberthaw and Barry, bounded on the north by the Waycock Valley (LCA 20) and Cardiff International Airport (LCA 18) and on the south by the Fontygary – Porthkerry intertidal landscape zone (LCA 5). Generally an open landscape, excludes the settlements of Fontygary and Rhoose; a key area is the wooded valley area of Porthkerry Country Park which is the confluence of the Cwm Barri and Cwm Cidi, together with Whitelands Brook. This forms a distinctive steeply side incised valley system in the plateau running down to the coast at Porthkerry.

Geological Landscapes

Part of the extensive, broad, lowland dissected coastal plateau of the Vale (aspect area GL863). It shows evidence of past quarrying at Rhoose Point and a system of incised valleys around Porthkerry.

Landscape Habitats

A mosaic of lowland terrestrial habitats with woodland and riparian features at Porthkerry.

Visual and Sensory Landscapes

A somewhat cluttered LCA with a number of adjacent visual detractors – Aberthaw Power Station / Cement Works (LCA 4) Cardiff International Airport (LCA 18) and the settlements of Fontygary and Rhoose. The Porthkerry area is relatively attractive with the network of small wooded valleys and open spaces at the Country Park, if somewhat affected by the railway, adjacent settlements and the airport.

Historic and Cultural Landscapes

Part of the wider agricultural Vale landscape, the area has associations with numeral excavations, together with recreational landscapes at Fontygary Holiday and Leisure Park and Porthkerry Country Park.

Key Policy and Management Issues

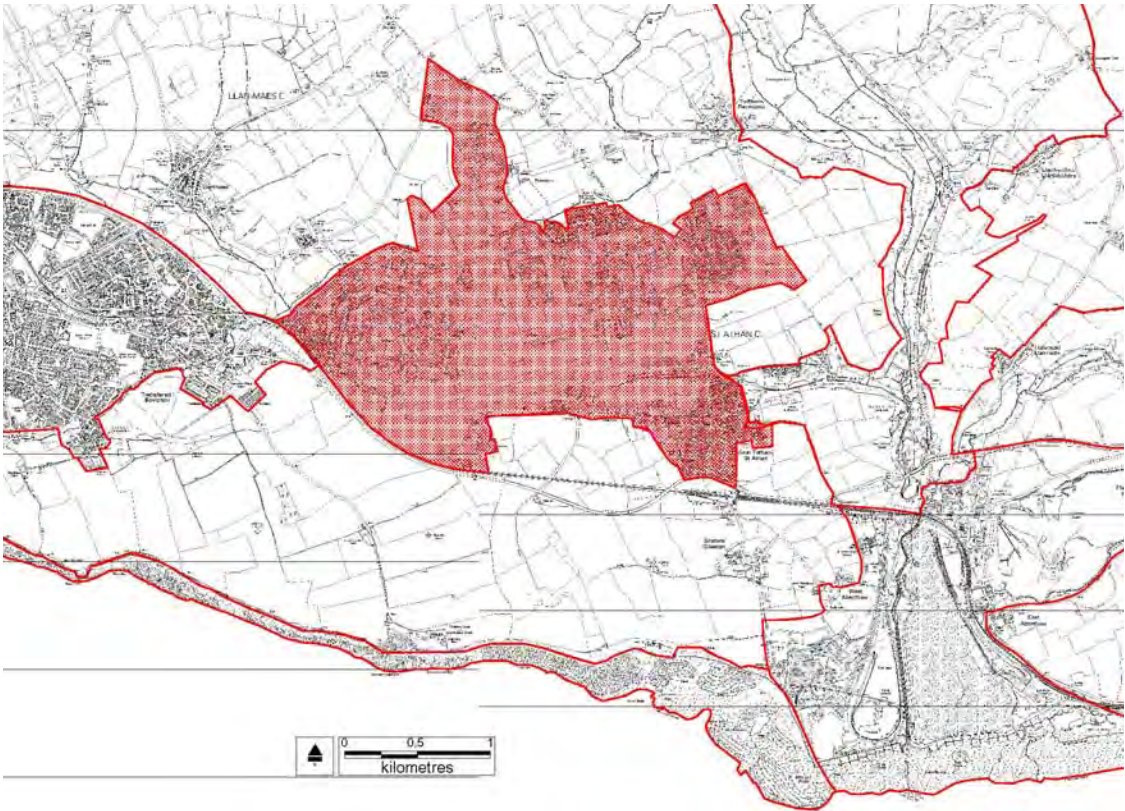
- Longer term management of Porthkerry Country Park.
- Pressure of visitor use upon adjacent coastal area.
- Mitigation of impact of Cardiff International Airport upon LCA.
- Maintenance of agricultural landscape elements.

LCA 26 Rhoose- Porthkerry
Hinterland

Aspect	Aspect Area	Area Name	Description	Overall Evaluation	Evaluation Criteria									Management Issues	
					1	2	3	4	5	6	7	8	9		
Geological	GL 962	Barry-Rhoose	Lowland plateau	High	H	M	M	M							Conserve existing geomorphological integrity
Landscape Habitats	LH 270	Porthkerry	Mosaic	High	H	M	M	U	L	H	H	M			Existing management generally appropriate.
	LH 839	Aberthaw	Mosaic	Moderate	M	M	U	U	U	U	M	M			Unassessed
	LH 840	Rhoose-Moulton	Mosaic	Moderate	M	M	U	U	U	M	M	M			Sympathetic management of hedgerows in particular may help to increase connectivity within and between local aspect areas.
Visual and Sensory	VS 317	Barry to Aberthaw cliffs	Cliffs & Cliff Tops	High	H	M	H	M							Development has an adverse effect on area and paths. Restrict development and improve countryside management.
	VS 641	Rhoose Hinterland	Mosaic Rolling Lowland	Moderate	M	M	M	M							Hedgerows in decline, improve field boundary management
	VS 987	Porthkerry Country Park and Environs	Wooded Lowland Valleys	High	H	M	H	H							Not enough resources are allocated to woodland management. Management strategy needed to integrate recreation.
Historical Landscapes	HL 002	Southern Vale Communication Corridor	Communications	Unassessed											
	HL 003	Porthkerry Country Park	Woodland	Unassessed											
	HL 030	Porthkerry Rural	Regular Fieldscapes	Unassessed											
	HL 032	Llancarfan	Irregular Fieldscapes	Unassessed											
	HL 050	Dyffryn	Regular Fieldscapes	Unassessed											
Cultural	CL 009	Vale of Glamorgan Railway	Infrastructure	High	M	H	H	U	L	H	L	U	M		Continue to maintain and promote use of the line.
	CL 012	Barry	Urban	High	H	H	L	U	M	H	L	H	U		Maintain high standards of design and planning
	CL 028	Rural Village Conservation Areas	Institutions	Outstanding	M	H	L	M	O	H	L	L	U		Ensure designation affords protection. Continue to police designated areas
	CL 038	Rhoose & Fontygary Leisure Park	Urban	High	M	H	H	U	H	U	L	M	L		Restrict development to planned boundaries
	CL 039	Vale of Glamorgan Rural Landscape	Rural	High	H	O	L	U	O	H	L	H	L		Maintain consistent planning policies to preserve the landscape.

LANDSCAPE CHARACTER AREA 27 - ST ATHAN

Plan



Photographs



St Athan complex near Briarbank, St John's Valley

Description

Centred on the airfield and military base, the LCA is a mixture of RAF St Athan and the associated training and residential complexes associated with it. A generally flat area of landscape, the LCA relates to all of the area under military command.

Geological Landscape

Part of the wider, broad, open coastal plateau, the LCA is set around the 40 to 45m contour AOD. These are a number of small valleys cutting into this plateau eg: St John's Valley, Nant y Stepsau which run eastwards into the Thaw.

Landscape Habitats

Largely closely maintained improved grassland. Essentially a manmade landscape with a few examples of other lowland habitats.

Visual and Sensory Landscape

A flat, open, exposed area centred on the airfield railway complex and typical of its functional role. Major groups of buildings on the northern edge of the complex to the west and east of the runway.

Historic and Cultural Landscapes

Part of the network of airfields in this part of the Vale related to military developments within the area. Is to be the subject of extensive capital investment for military training, further extending this association.

Key Policy and Management Issues

- Work closely with military organisations to ensure new developments are integrated into wider landscapes.
- Management of the interface between military zone and wider Vale landscape.

LCA 27 St Athan

Aspect	Aspect Area	Area Name	Description	Overall Evaluation	Evaluation Criteria									Management Issues	
					1	2	3	4	5	6	7	8	9		
Geological	GL 863	Llanwit-St. Athan	Lowland plateau	Moderate	M	M	M	M							Conserve existing geomorphological integrity
Landscape Habitats	LH 582	Ogmore-Llantwit Arable Belt	Mosaic	Moderate	M	L	M	U	L	M	L	H			The provision of set aside buffer strips at the edges of the arable fields and sympathetic management of field boundaries would increase biodiversity interest.
	LH 583	St Athan	Mosaic	Low	L	L	M	U	L	U	L	M			Unassessed
	LH 897	Boverton	Arable	Outstanding	M	M	H	U	L	U	M	M			The aspect area is intensively managed. Sympathetic management to encourage biodiversity.
Visual and Sensory	VS 456	RAF St Athan	Urban	Low	L	L	M	L							Sterile, suburban landscape treatment. Improve integration of development into landscape
Historical Landscapes	HL 031	RAF St Athan	Military	Unassessed											
	HL 052	Llysworney and Llandough	Regular Fieldscapes	Unassessed											
Cultural	CL 004	RAF Station, St Athan	Infrastructure	Outstanding	O	O	U	U	O	H	L	H	U		As a MoD establishment the station is well managed.
	CL 039	Vale of Glamorgan Rural Landscape	Rural	High	H	O	L	U	O	H	L	H	L		Maintain consistent planning policies to preserve the landscape



Northern Vale Lias Slopes

Upper Thaw Valley

Ystradowen Lowland Valleys

Hensol Forest

Lias Plateau

Central Vale Ridges & Slopes

Lower Thaw Valley

Llandow Trading Estate

St Athan

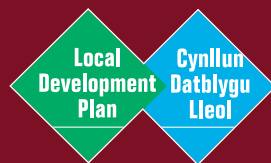
Thaw Estuary

Lower Waycock

Cardiff International Airport

Fontygary B

TACP
10 PARK GROVE
CARDIFF CF10 3BN
T: 029 20 228966
F: 029 20 394776
E: cardiff@tacz.uk.com
www.tacz.uk.com



The Vale of Glamorgan Council
Directorate of Development Services

Dock Office
Barry Docks
Barry CF63 4RT

LDP@valeofglamorgan.gov.uk
www.valeofglamorgan.gov.uk