

To the Welsh Ministers,

Active Travel (Wales) Act 2013 Reporting Duties up to 31/03/2021

In accordance with the duties under sections 7 (3) and 10 (2) of the Active Travel (Wales) Act 2013, please find below **Vale of Glamorgan's** annual report for **2020-21**.

The actions taken to promote active travel journeys



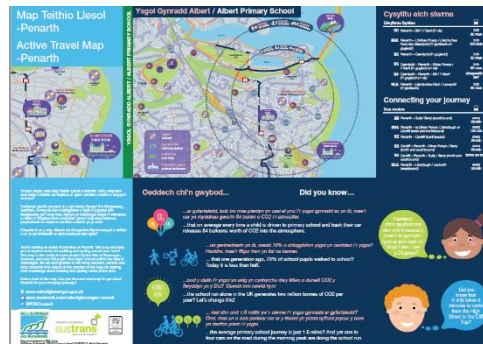
Every Primary School in the Vale received an additional 2 balance bikes and helmets, for use in schools to encourage early positive cycle behaviour.

Bikes were provided to schools identified as being in 'deprived areas' to enable Year 5 & 6 pupils to undertake Cycle Proficiency Training (48 bikes across 12 schools). Storage containers will be supplied in 2021 to offer secure storage.

Scooter storage provided at 16 schools and cycle storage at 7 schools in the Vale.




Sully Primary School



Active Travel Maps designed by 8 schools in the Vale were printed and distributed to schools.

Footway improvements were made in various locations in the Vale including dropped kerbs, tactile paving and footway widening.

	<p>The Council continues to be active within the Vale Healthy Staff Charter Group, working with their partners on the Public Services Board.</p> <p>In November 2020 the Council launched an E-Bike hire scheme in conjunction with OVObike (formerly nextbike) in Penarth with the installation of 6 docking stations. Designs for a docking station in Sully commenced and will be installed in FY21/22 along with docking station in Dinas Powys.</p>  <p>The Council has launched a new website to promote Active Travel funded schemes and continues to promote through social media channels: https://www.valeofglamorgan.gov.uk/en/living/transportation/Active-Travel-and-Safe-Routes-in-Communities-Projects.aspx</p> <p>The Council attends regular meetings with other Local Authorities, Welsh Government, Sustrans and Public Health Wales to share good practice and knowledge. We have regular 6 weekly meetings with our Welsh Government funded Sustrans Officer to discuss current and future projects.</p> <p>The Council offers National Standard Cycle Training Level 1 and 2 to all its primary schools. Due to Covid-19, schools did not participate in this academic year.</p> <p>Kerbcraft and Child Pedestrian Training was also affected by Covid-19 with no children partaking and the CPT instructor seconded to Track and Trace.</p>
<p>The actions taken to secure new active travel routes and related facilities and improvements</p>	<p>All new development schemes within the Vale of Glamorgan are expected to deliver Active Travel infrastructure and officers make comments on all travel plans that are conditioned through the Planning Process to ensure compliance.</p> <p>All developments are expected to provide Active Travel infrastructure through either S278/S38 highway works and/or S106 funding. In 20/21 construction started by the housing developer, on a shared use facility near The Gathering Place in St Athan that will connect to the shared use footway/cycleway being constructed by the Council in 21/22 connecting to St Athan village. In addition, in 21/22 the land along the boundary of Bro Tathan in St Athan has been given in lieu of S106 funds to enable the progression of an</p>

	<p>active travel route through Eglwys Brewis. The route option chosen through public consultation will be designed, and funding sought to continue in FY22/23. This would provide an active travel route from St Athan to the outskirts of Llantwit Major.</p> <p>Active Travel Core Allocation Fund used for improving AT routes (dropped kerbs, tactile paving) and providing bike shelters and balance bikes in schools.</p>
<p>Costs incurred for new active travel routes and facilities and improvements of existing active travel routes and related facilities carried out in the preceding full financial year</p>	<p>£221,000 Sustainable Transport in response to COVID-19 funding received July 2020 to assist with social distancing in town centres and around the school gates. This funding was used to provide cycle parking in town centres; cones and barriers to prevent parking at school gates; scooter parking in schools; signage to deter parking at schools.</p> <div style="display: flex; justify-content: space-around;">   </div> <p>FY20/21 £410,000 (WG Core AT) Cycle Hire scheme – funding granted to expand the electric cycle hire scheme into Sully. Other opportunities for stations and schemes will continue to be looked at in the LA. This grant was also used for design of the active travel routes for Waycock Cross to Cardiff Airport, feasibility and concept design for Cardiff Road, Barry; Llanmaes Road, Llantwit Major and Llantwit Major Road, Cowbridge. As well as the provision of additional 100 balance bikes, helmets and cycle storage at schools.</p> <p>FY 20/21 £43,843 (WG SRiC) for detailed design to create 1km of shared cycleway/footway and £143,850 (S106 sustainable transport) St Athan Active Travel Scheme to install dropped kerbs and tactile paving – WG AT funding granted for construction FY21/22</p>

In addition to the above (optional):

<p>Indicative spending for new active travel routes and facilities and improvements of existing active travel routes and related facilities funded</p>	<p>FY21/22 £635,000 (WG Core Active Travel)</p> <ul style="list-style-type: none"> • Upload of maps into DataMapWales • Detailed design of AT route - Cardiff Road, Barry • Detailed design of AT route Llanmaes Road
--	--

<p>or part funded by third parties.</p>	<ul style="list-style-type: none"> • Detailed design of AT route Waycock Cross to Cardiff Airport • Investigation work for AT route - Biglis to Dinas Powys • Design & feasibility of an improved AT route from Sully to Cosmeston • Design & feasibility of AT route through Eglwys Brewis • Cycle storage in towns, villages and schools • ATNM improvements (dropped kerbs and tactiles) • E-bike docking station Dinas Powys <p>FY 21/22 Safe Routes in Communities Fund – £611,000 Fairfield Primary School Community Design project. Funding received to improve streets around the school to encourage active travel and reduce congestion in surrounding streets.</p> <p>FY 21/22 Active Travel fund – £1,061,600 St Athan Active Travel shared use facility to be constructed in FY21/22 improving pedestrian and cycle movements between St Athan village and Eglwys Brewis.</p> <p>FY 21/22 Public Health Wales Prevention Health Funding granted to assist schools with developing School Active Travel plans (£12k), £10k provided to deliver the Living Streets walk once a week (WOW) scheme funded for 20 schools and mid-year funding granted to install bike pump/repair stations throughout the Vale (£30k).</p> <p>S106 sustainable transport funding available in Sully and Barry to enable active travel improvements. Construction of a shared use cycleway/footway in Rhoose will begin Winter 2021.</p>
<p>Length of new routes:</p> <ul style="list-style-type: none"> - Walking - Cycling - Shared Use 	<p>n/a</p>
<p>Length of improved routes:</p> <ul style="list-style-type: none"> - Walking - Cycling - Shared Use 	<p>S106 sustainable transport funding - St Athan pedestrian improvements (dropped kerbs and tactile paving) - 340 metres</p> <p>S106 sustainable transport funding – pedestrian improvements (dropped kerbs and tactile paving) – Murch Road – 170 metres</p> <p>Greening, Growing, Connected – Barry – pedestrian improvements - 170 metres</p>

New and improved active travel facilities

FY20/21 - scooter storage provided at 16 schools and cycle storage at 7 schools in the Vale (Core ATF)



Gladstone Primary School

Town centre recovery funding provided additional cycle storage on Holton Road, Barry. This also funded the installation of a temporary crossing facility on Windsor Road, Penarth, that proved successful and is being looked at as a permanent feature for Penarth Town Centre.

Additional information (optional)

Autumn 2021 - The Council will launch phase 2 of the Cycle2Work scheme for employees allowing the purchase of cycles up to the value of £3500.

Core AT funding received in 21/22 for installation of e-bike docking station in Dinas Powys. A further aspiration is to expand the hire scheme into Barry.

Quarterly meetings of the Vale of Glamorgan Strategic Transport Board ensure all departments within the Council are aware of active travel plans to ensure joint working between departments.

Grant applications through LTF, SRiC, Metro, Cardiff City Deal etc. all include Active Travel proposals to enable the Council to maximise all avenues of funding available.

I confirm that this report will be published online and made available in hard copy on request, in accordance with the statutory Delivery Guidance.

Chief Executive Signature:

A handwritten signature in blue ink, appearing to read 'DR Thomas', enclosed in a rectangular box.

Chief Executive Name:

Robert Thomas