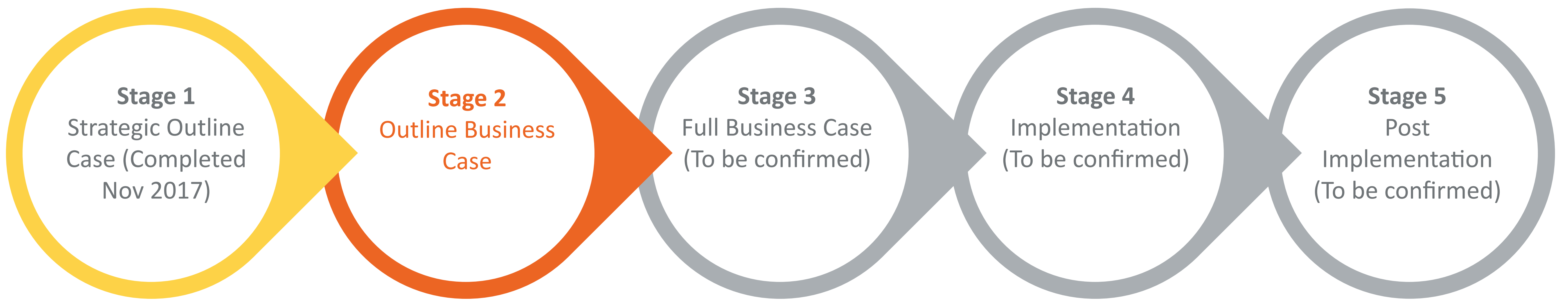


WHAT ARE WE TRYING TO ACHIEVE?

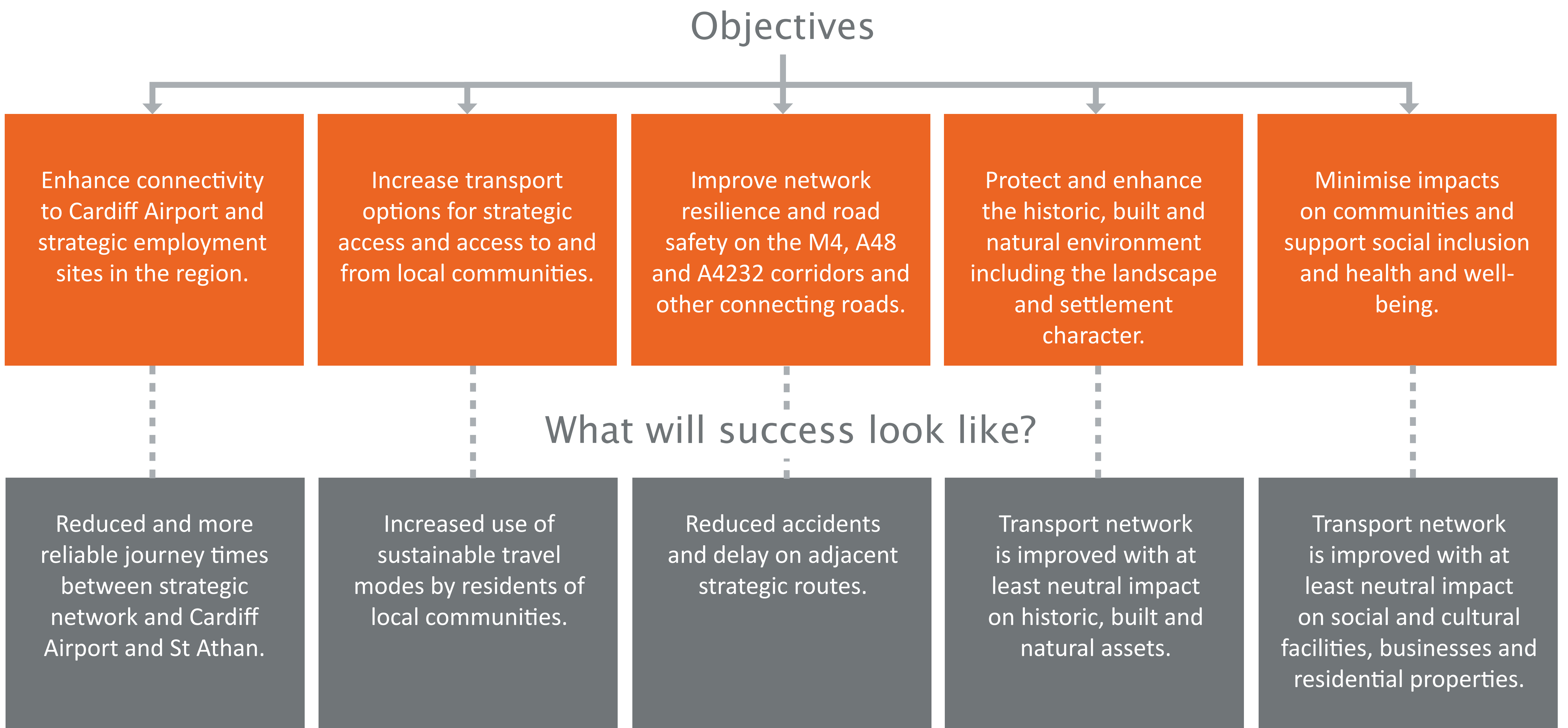
What is WeTAG?

WeTAG is the Welsh Government's framework for the development, appraisal and evaluation of proposed transport projects in Wales. Any projects requiring public money need to be developed using the process. The five stages of WeTAG are:



Stage One Study

A Stage One: Strategic Outline Case was developed in 2017. The study developed objectives to address the identified transport problems and respond to the goals of the Well-being of Future Generations (Wales) Act 2015.



Stage One Recommended Options

Consultation took place on the Stage One study and a long list of options was considered to meet the objectives. In November 2017 the Vale of Glamorgan Council endorsed the recommendation that the following three options should be further investigated in a Stage Two study:

1. Highway Option 1 – a highway route east of Pendoylan
2. Highway Option 2 – a highway route west of Pendoylan
3. Parkway Station – located on the main Cardiff to Bridgend line, with park and ride facility and bus integration near to M4 Junction 34

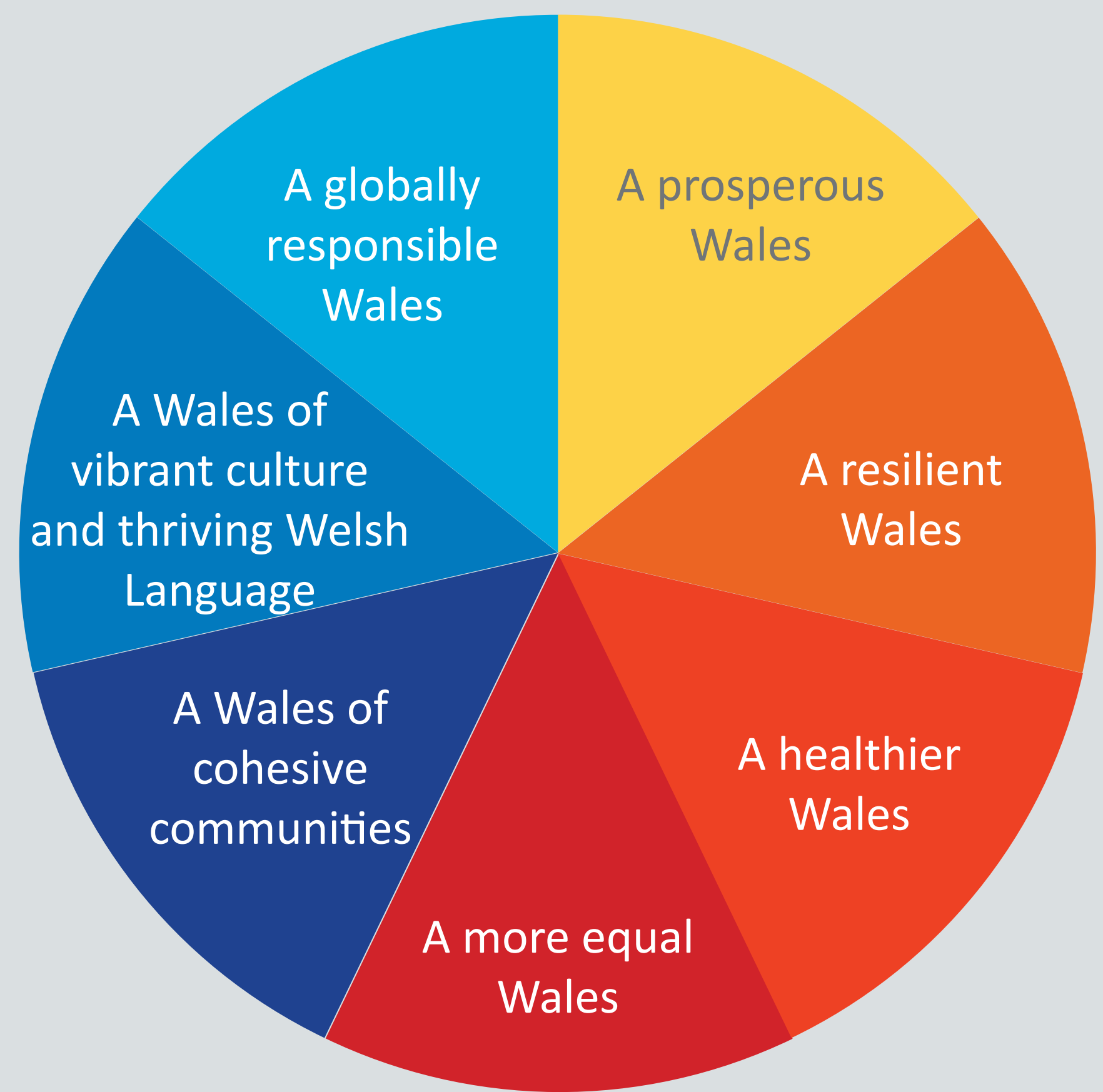
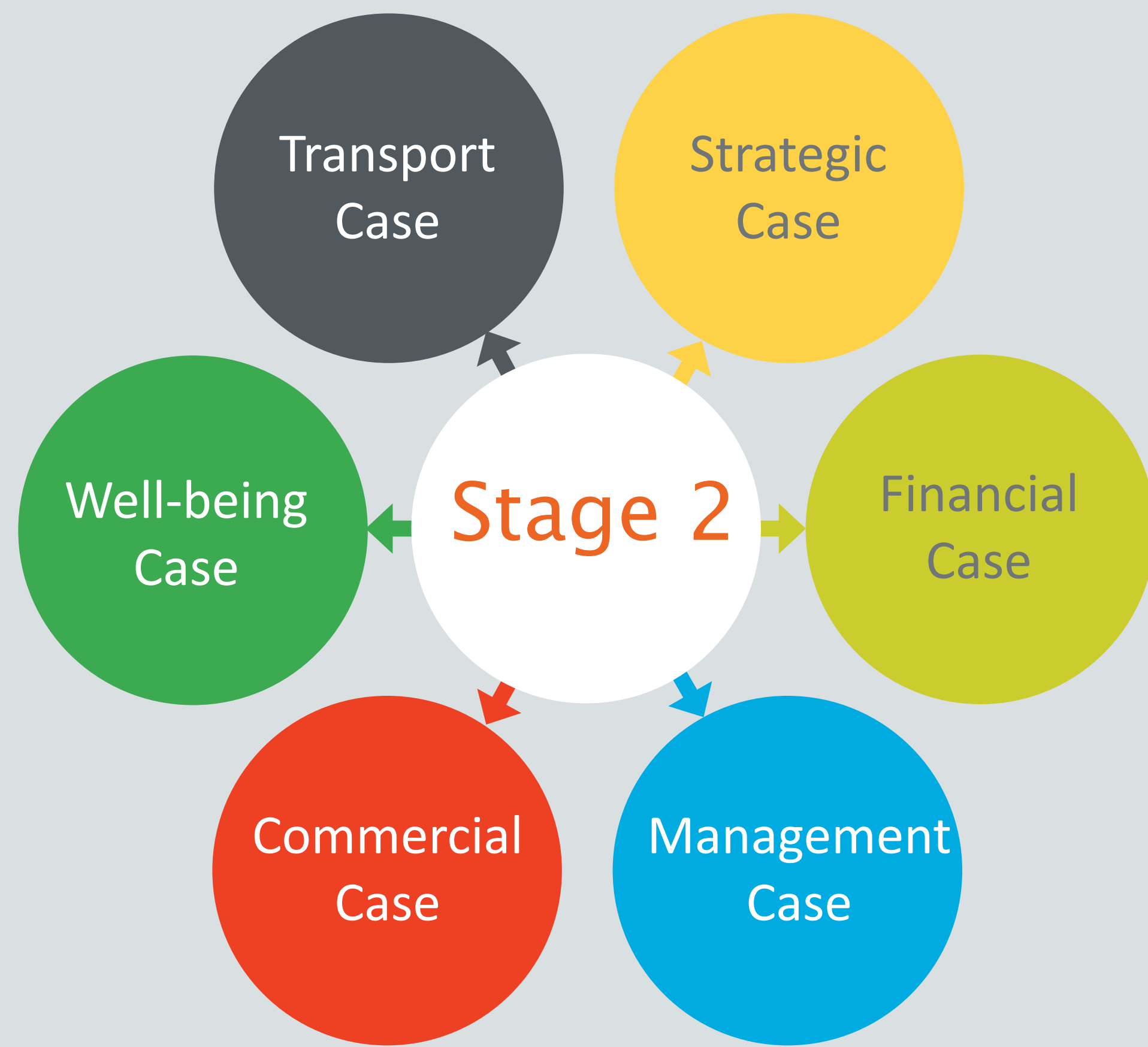


Consultation Stage One (November 2017)

What is the Purpose of Stage Two?

The purpose of the Stage Two study is to examine in greater detail the options recommended from Stage One. This involves a five-case assessment for each option.

The assessment of each option also includes their contribution towards the well-being goals as set out in the Future Generations of Wales (2015) Act.



Improving Strategic Transport Encompassing Corridors for the M4 Junction 34 to A48 Including the Pendoylan Corridor

WeTAG Stage Two: Outline Business Case

