

Notes:  
Do not scale this drawing. Check all dimensions on site. Any discrepancies to be reported back to the Architect for clarity.



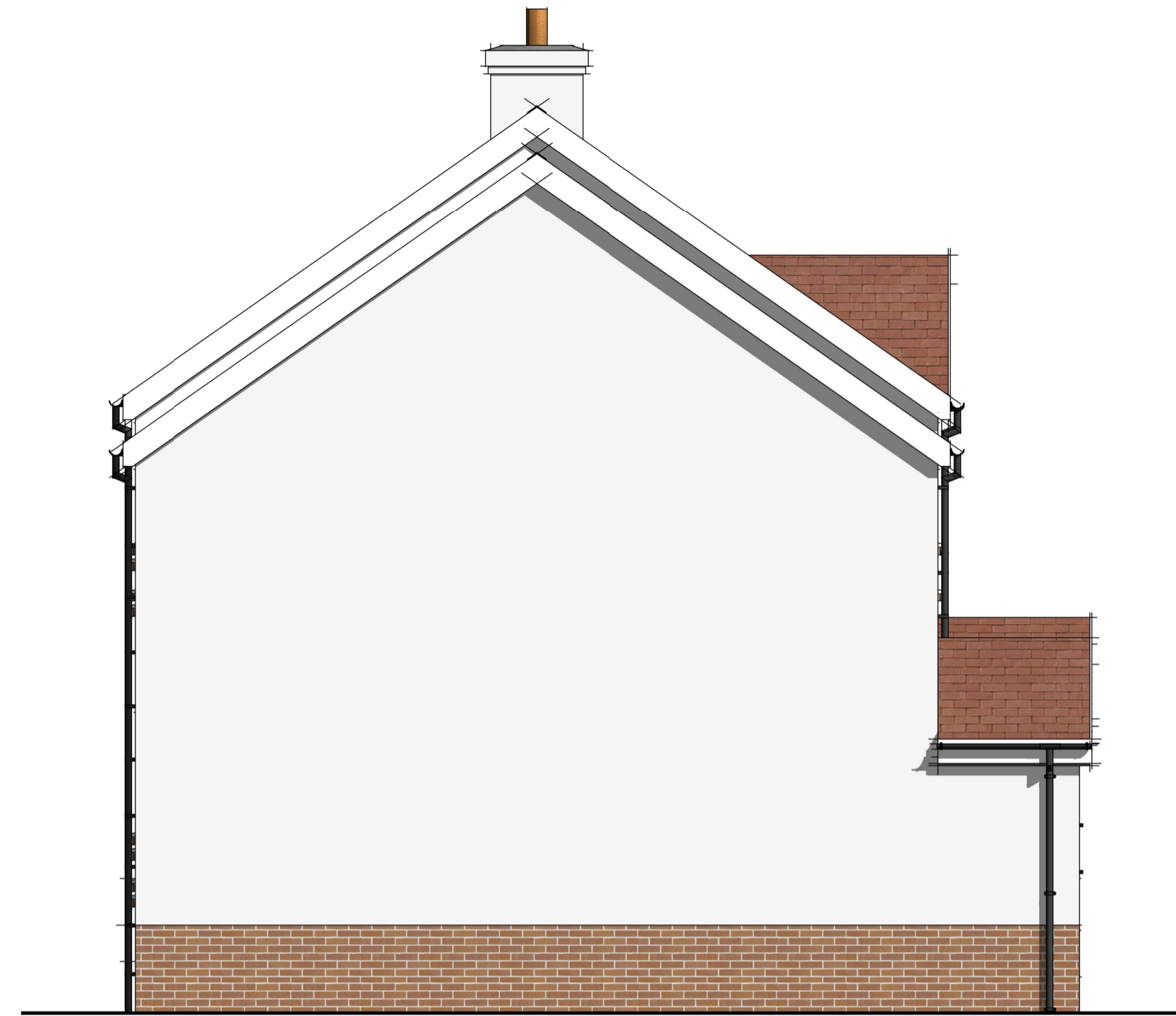
**3** Housetype 2 - Front elevation  
1 : 50

**Schedule of materials**

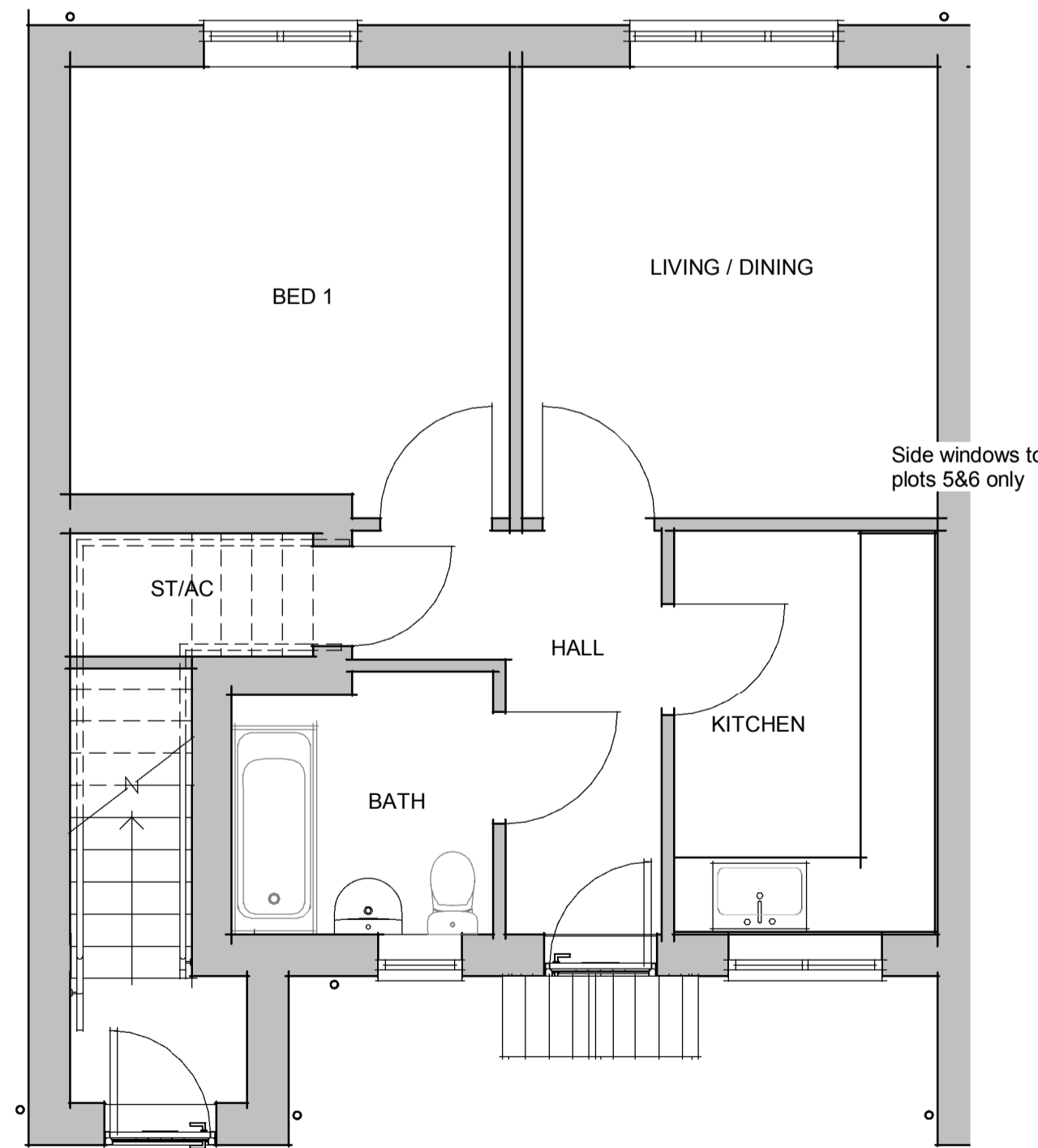
1. Brown colour marley 'Acme' single camber plain roof tiles
2. White colour UPVC fascias / soffits / bargeboards
3. Black upvc rainwater goods
4. White upvc casement windows with red brick cill
5. White colour roughcast render
6. Red colour facing brickwork
7. GRP Door canopies
8. Composite external doors with glazed panels
9. GRP Chimneys



**6** Housetype 2 - Rear elevation  
1 : 50

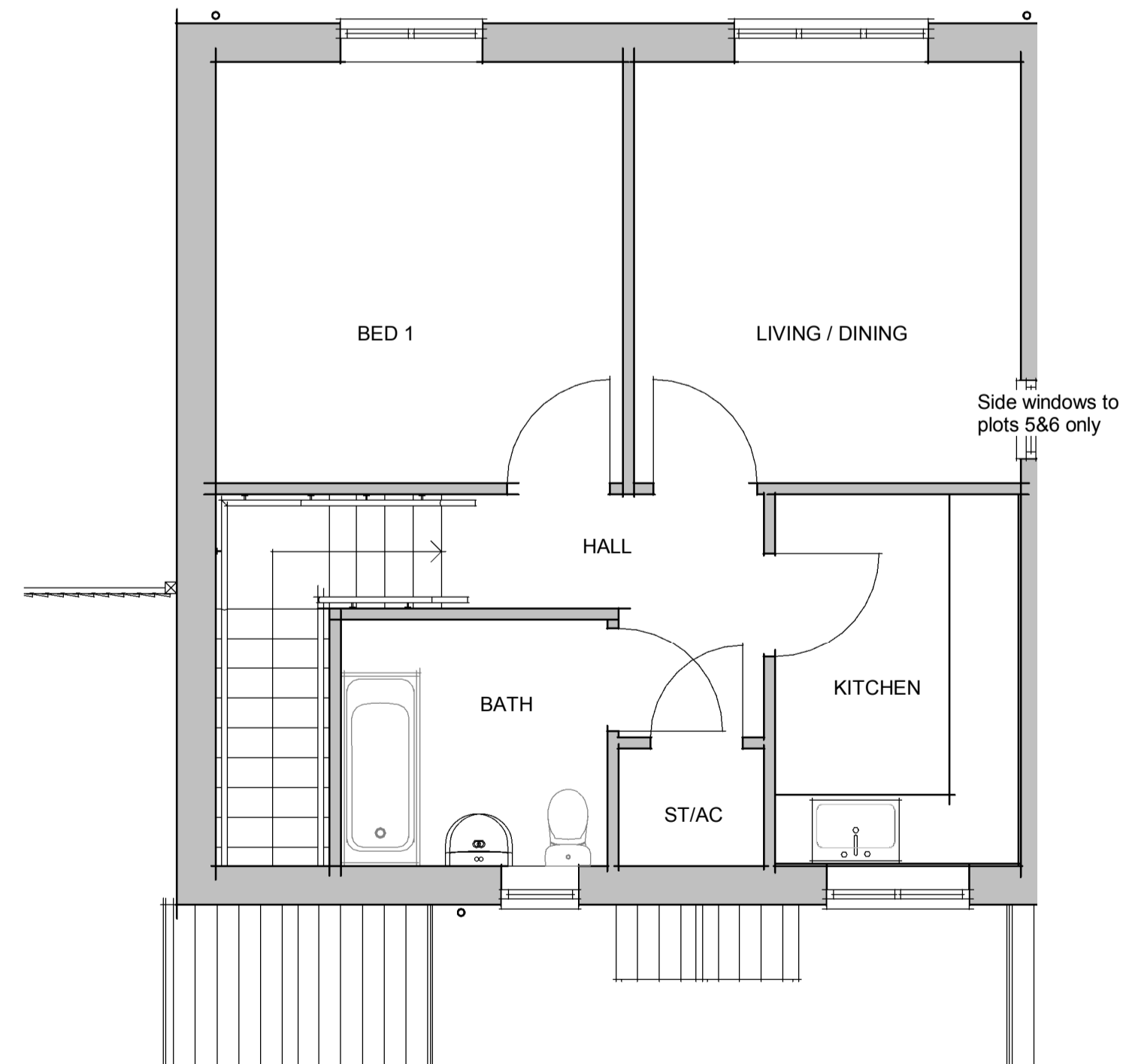


**4** Housetype 2 - Side elevation 1  
1 : 50

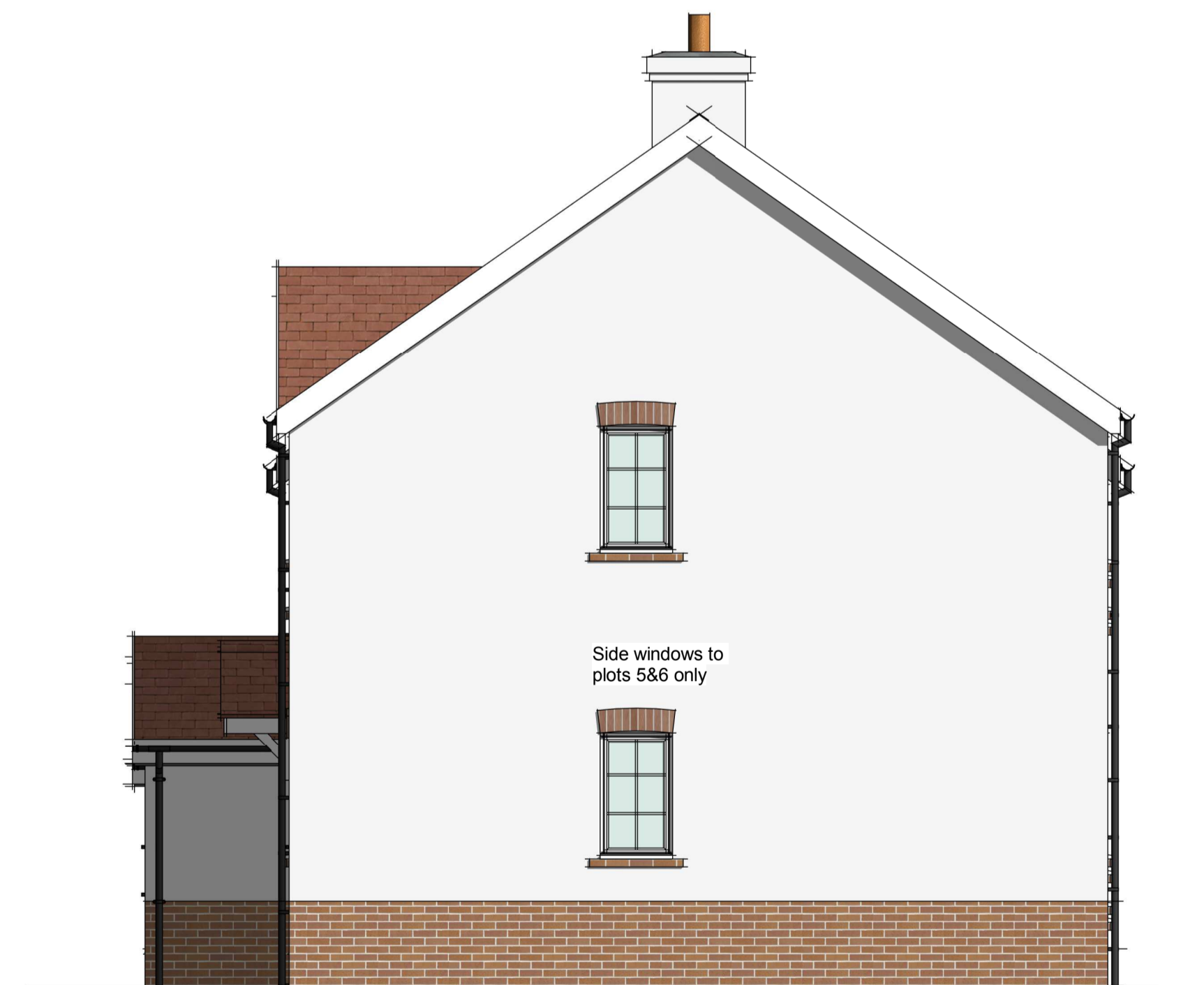


**1** Housetype 2 ground floor  
1 : 50

Housetype 2 - 1b2p Walk up flat



**2** Housetype 2 - First floor  
1 : 50



**5** Housetype 2 - Side elevation 2  
1 : 50

|              |  |            |
|--------------|--|------------|
| B            | Updated inline with engineering drawings | 15.01.2019 |
| A            | Updated following design review          | 07.01.2019 |
| Rev/Revision | By                                       | Date       |



Project:  
**Maes-Y-Ffynon | Bonvilston**

Job Number: **L525**

Date: **30.08.2018**

Drawn by: **Author**

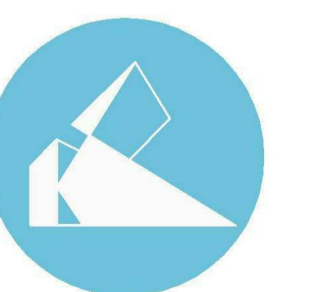
Dwg No: **A004**

**Housetype 2**

Revision: **B**

Scale: **1 : 50 @ A1**

Drawing Status: **PAC**



**TONY KING ARCHITECTS LTD**

97a Glebe Street, Penarth  
Vale of Glamorgan CF64 1EE

T: 02920 306400  
www.tonykingarchitects.co.uk