

Notes:

Do not scale this drawing. Check all dimensions on site. Any discrepancies to be reported back to the Architect for clarity.



3 Housetype 3 - Front elevation

1 : 50

Schedule of materials

1. Brown colour marley 'Acme' single camber plain roof tiles
2. White colour UPVC fascias / soffits / bargeboards
3. Black upvc rainwater goods
4. White upvc casement windows with red brick cill
5. White colour roughcast render
6. Red colour facing brickwork
7. GRP Door canopies
8. Composite external doors with glazed panels
9. GRP Chimneys



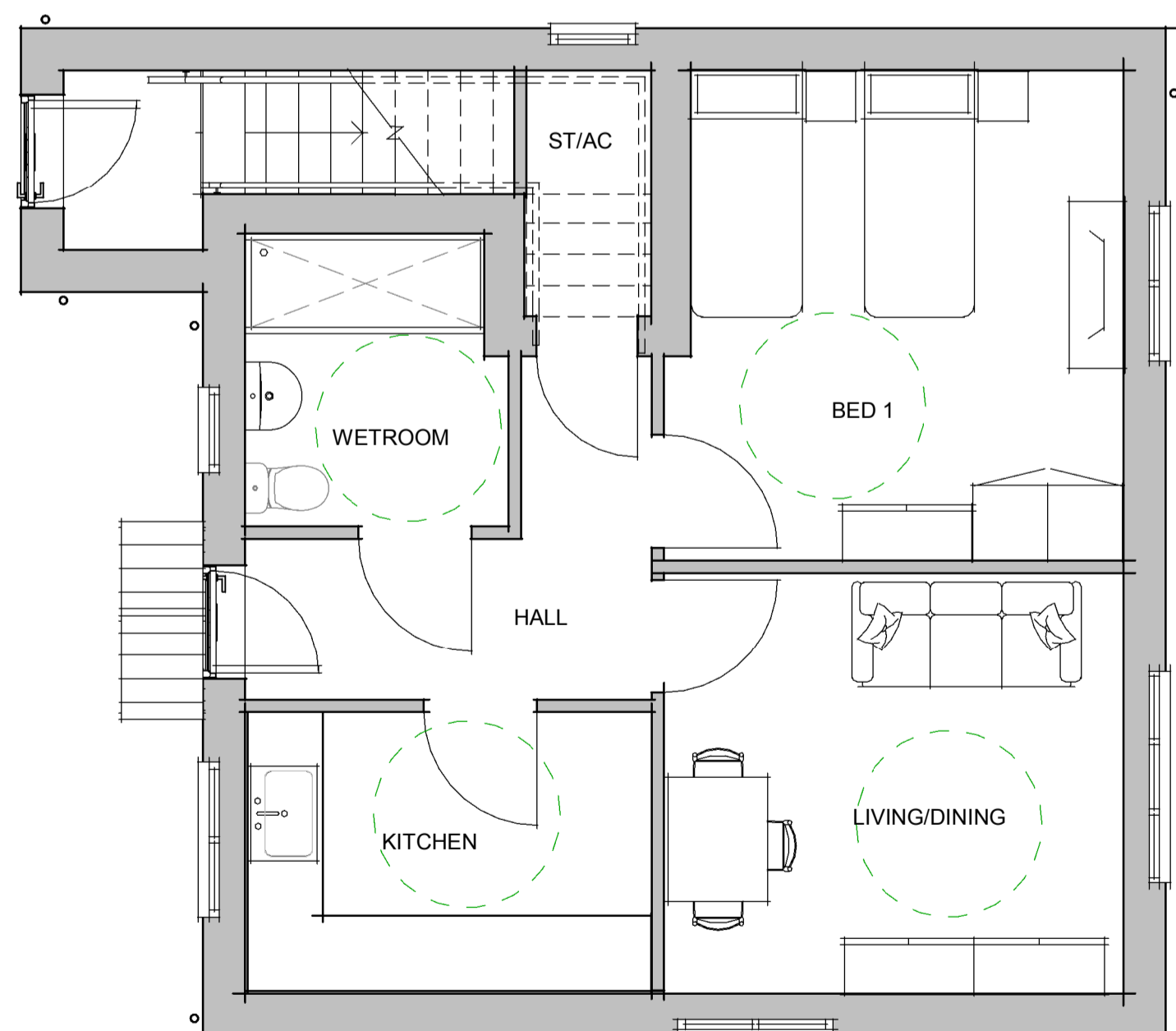
4 Housetype 3 - Rear elevation

1 : 50



5 Housetype 3 - Side elevation 1

1 : 50



1 Housetype 3 - Ground floor

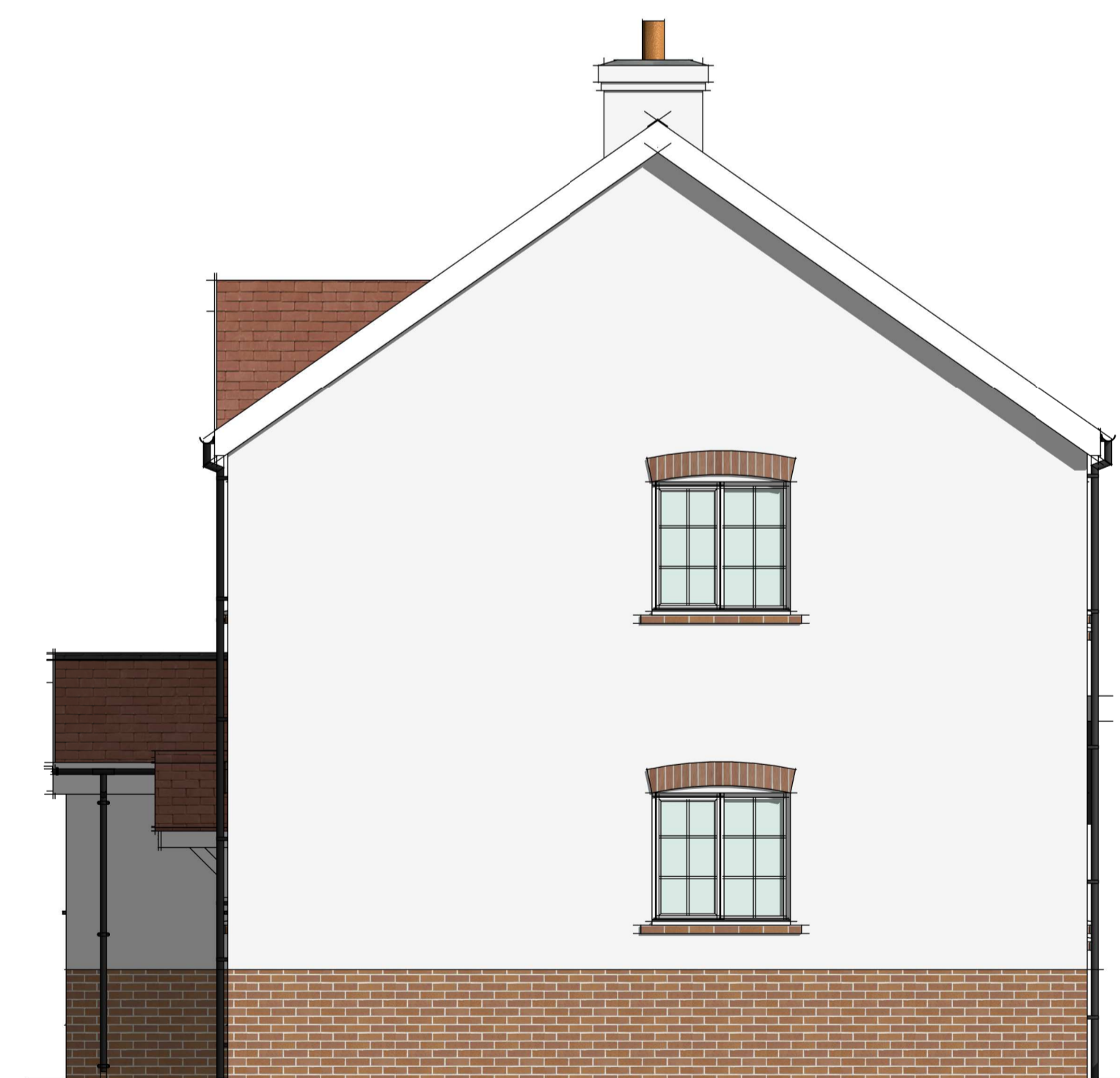
1 : 50

Housetype 3 - 1b2p Walk up flat (55 plus)



2 Housetype 3 - First floor

1 : 50



6 Housetype 3 - Side elevation 2

1 : 50

B	Updated inline with engineering drawings	15.01.2019
A	Updated following design review	07.01.2019
Rev/Revision	By	Date

Client:



Project:

Maes-Y-Ffynon | Bonvilston

Job Number:

L525

Date:

30.08.2018

Drawn by:

Author

Dwg No:

A005

Housetype 3

Revision:

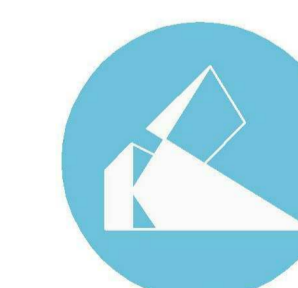
B

Scale:

1 : 50 @ A1

Drawing Status:

PAC



TONY KING
ARCHITECTS LTD

97a Glebe Street, Penarth
Vale of Glamorgan CF64 1EE

T: 02920 306400
www.tonykingarchitects.co.uk