



The Vale of Glamorgan Council

BVPI Survey Report

Local Access Forum Meeting – 25th May 2016

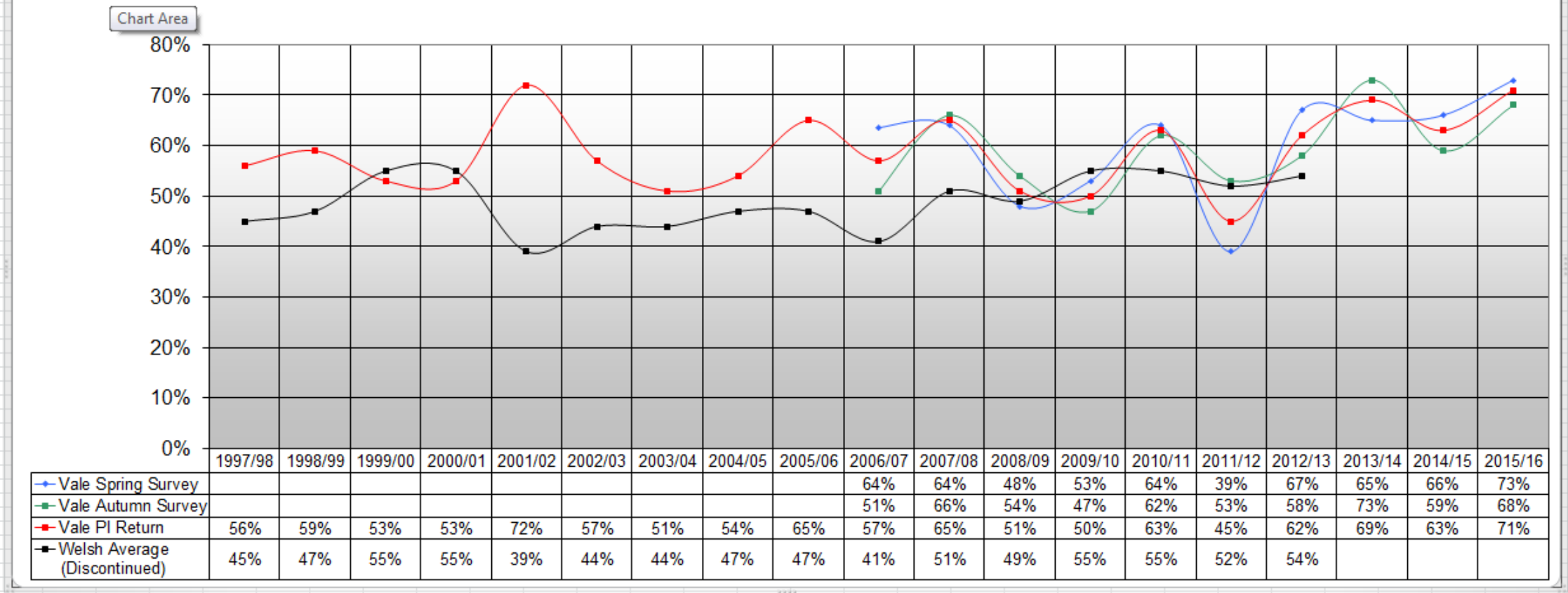
- 1.1 Once again the 2015/16 annual performance indicator survey was undertaken by volunteers from the LAF providing an invaluable level of consistency.
- 1.2 The format of the survey followed Best Value Performance Indicator No.178 (April 2001) methodology which was produced by the County Surveyors Society in conjunction with the Countryside Agency and the Institute of Public Rights of Way Officers.
- 1.3 10.2% (58.2 kms) of the PROW network was surveyed, the paths surveyed were chosen by random selection with 5% surveyed in the spring and 5% in the autumn.

The survey provides results for two indicators:

- The percentage of paths Easy to Use
- The percentage of paths Signposted from the Road

- 1.4 The graphs in Appendix 1 provide an overview of survey results from 1997/98. The opportunity to feed the results into a national database is no-longer available hence the All Wales figures are no-longer inserted into the graphs.
- 1.5 Having reviewed the full survey returns the Spring figures have been adjusted from that reported to the LAF in September 2015 following recognition of a data entry error.
- 1.6 The detail from all survey returns is added to our CAMS maintenance database.

Paths that are easy to use



Paths that are signposted from the road

