

Vale of Glamorgan Council



Welcome to Scrutiny Committee

What does our vision mean?

AN ACTIVE
AND
HEALTHY VALE



STRONG COMMUNITIES
WITH A
BRIGHT FUTURE



AN INCLUSIVE
AND
SAFE VALE



AN ENVIRONMENTALLY
RESPONSIBLE
AND
PROSPEROUS VALE



AN ASPIRATIONAL
AND
CULTURALLY VIBRANT VALE



It's about bringing wellbeing alive

AN ENVIRONMENTALLY RESPONSIBLE AND PROSPEROUS VALE



AN ASPIRATIONAL AND CULTURALLY VIBRANT VALE



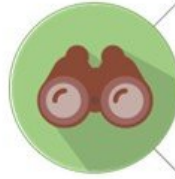
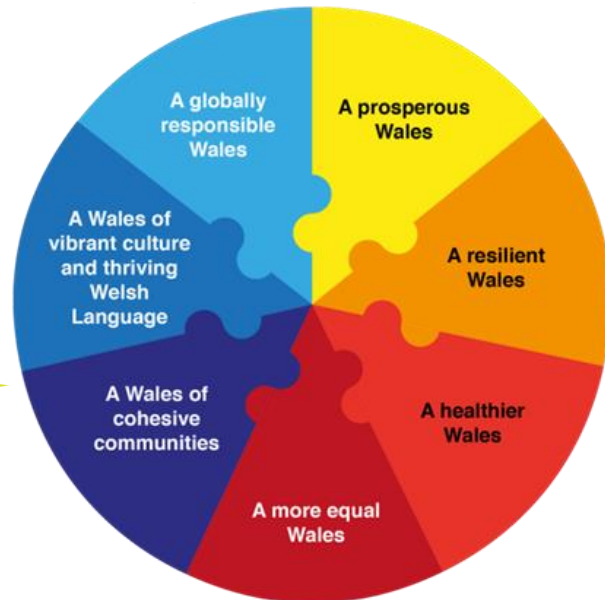
AN ACTIVE AND HEALTHY VALE



AN INCLUSIVE AND SAFE VALE



STRONG COMMUNITIES WITH A BRIGHT FUTURE



LONG-TERM - The importance of balancing short term needs with the need to safeguard the ability to meet long term needs, especially where things done to meet short term needs may have detrimental long term effect.



PREVENTION - how deploying resources to prevent problems occurring or getting worse may contribute to meeting the body's well-being objectives, or another body's objectives.



INTEGRATION -the need to take an integrated approach, by considering how the body's well-being objectives may impact upon each of the well-being goals, on their other objectives, or on the objectives of other public bodies.



COLLABORATION - how acting in collaboration with any other person (or how different parts of the body acting together) could assist the body to meet its well-being objectives, or assist another body to meet its objectives.



INVOLVEMENT - the importance of involving other persons with an interest in achieving the wellbeing goals and of ensuring those persons reflect the diversity of the area which the body serves.

Delivering our vision



4 Well-being Objectives

1. Work with and for our communities
2. Support learning, employment & sustainable economic growth
3. Support people at home and in the community
4. Respect, enhance and enjoy our environment



Six Themes 2022/23

- Project Zero
- Community Capacity
- Hardship
- Care & Support
- Transformation
- Infrastructure

Scope of the Committee & Council Functions

Each committee looks at the issues relating to the outcomes we want to achieve to deliver our vision.

To make the connections, and take an **integrated approach** to our work, a number of service areas are allocated within the specific remit of each committee.



For Environment & Regeneration Committee: Economic Development, Tourism, Countryside, Regeneration, Waste Management and Cleansing, Highways & Engineering, Grounds Maintenance, Planning, Transportation, Fleet Management, Cleaning and Security, parking, environmental enforcement and parks and resorts .

The Team Behind the Functions- Place

- Marcus Goldsworthy – **Director of Place**
- Head of Service– Currently vacant
- Phil Chappell - **Operational Manager, Regeneration**
- Ian Robinson - **Operational Manager for Planning and Building Control**
- Mark White – **Major Project Manager**
- Charlotte Raine – **Major Project Manager**

The Team Behind the Functions- Environment & Housing Services

- Miles Punter – **Director of Environment & Housing Services**
- Emma Reed – **Head of Service, Neighbourhood Services and Transport**
- Colin Smith -**Operational Manager, Neighbourhood Services Operations**
- Mike Clogg - **Operational Manager, Engineering**
- Kyle Phillips - **Transport Services Manager**
- Craig Handley - **Enforcement Manager**



AMBITIOUS

OPEN

TOGETHER

PROUD



Welcome to Scrutiny Committee