

Vale of Glamorgan Council



Welcome to Scrutiny Committee

What does our vision mean?

AN ACTIVE
AND
HEALTHY VALE



STRONG COMMUNITIES
WITH A
BRIGHT FUTURE



AN INCLUSIVE
AND
SAFE VALE



AN ENVIRONMENTALLY
RESPONSIBLE
AND
PROSPEROUS VALE



AN ASPIRATIONAL
AND
CULTURALLY VIBRANT VALE



It's about bringing wellbeing alive

AN ENVIRONMENTALLY RESPONSIBLE AND PROSPEROUS VALE



AN ASPIRATIONAL AND CULTURALLY VIBRANT VALE



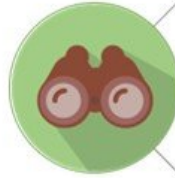
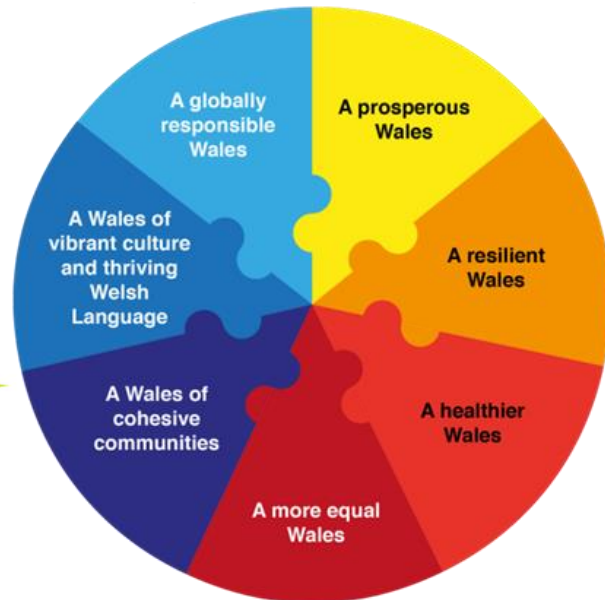
AN ACTIVE AND HEALTHY VALE



AN INCLUSIVE AND SAFE VALE



STRONG COMMUNITIES WITH A BRIGHT FUTURE



LONG-TERM - The importance of balancing short term needs with the need to safeguard the ability to meet long term needs, especially where things done to meet short term needs may have detrimental long term effect.



PREVENTION - how deploying resources to prevent problems occurring or getting worse may contribute to meeting the body's well-being objectives, or another body's objectives.



INTEGRATION -the need to take an integrated approach, by considering how the body's well-being objectives may impact upon each of the well-being goals, on their other objectives, or on the objectives of other public bodies.



COLLABORATION - how acting in collaboration with any other person (or how different parts of the body acting together) could assist the body to meet its well-being objectives, or assist another body to meet its objectives.



INVOLVEMENT - the importance of involving other persons with an interest in achieving the wellbeing goals and of ensuring those persons reflect the diversity of the area which the body serves.

Delivering our vision



4 Well-being Objectives

1. Work with and for our communities
2. Support learning, employment & sustainable economic growth
3. Support people at home and in the community
4. Respect, enhance and enjoy our environment



Six Themes 2022/23

- Project Zero
- Community Capacity
- Hardship
- Care & Support
- Transformation
- Infrastructure

Scope of the Committee & Council Functions

Each committee looks at the issues relating to the outcomes we want to achieve to deliver our vision.

To make the connections, and take an **integrated approach** to our work, a number of service areas are allocated within the specific remit of each committee.



For Healthy Living & Social Care Committee:

Adult Services, Children & Young People's Services, Resource Management & Safeguarding, Leisure, Parks, Sports & Play.

Scope of the Committee & Council Functions

Each committee looks at the issues relating to the outcomes we want to achieve to deliver our vision.

To make the connections, and take an **integrated approach** to our work, a number of service areas are allocated within the specific remit of each committee.



For Homes & Safe Communities Committee:

Public Housing, Public Housing Maintenance, Public Protection including all Shared Regulatory Services functions, Community Safety, Private Sector Housing and Renewal Areas, Crime and Disorder Matters, Families First, Flying Start and Communities First.

Scope of the Committee & Council Functions

Each committee looks at the issues relating to the outcomes we want to achieve to deliver our vision.

To make the connections, and take an **integrated approach** to our work, a number of service areas are allocated within the specific remit of each committee.



For Environment & Regeneration Committee: Economic Development, Tourism, Countryside, Regeneration, Waste Management and Cleansing, Highways & Engineering, Grounds Maintenance, Planning, Transportation, Fleet Management, Cleaning and Security.

Scope of the Committee & Council Functions

Each committee looks at the issues relating to the outcomes we want to achieve to deliver our vision.

To make the connections, and take an **integrated approach** to our work, a number of service areas are allocated within the specific remit of each committee.



For Learning & Culture Committee:

Schools (Pupil Support, School Improvement and School Support) , Post 16 Education and Training, Libraries, Community Education and Youth Service, Equalities , Welsh Language , Arts Development.

Scope of the Committee & Council Functions

Each committee looks at the issues relating to the outcomes we want to achieve to deliver our vision.

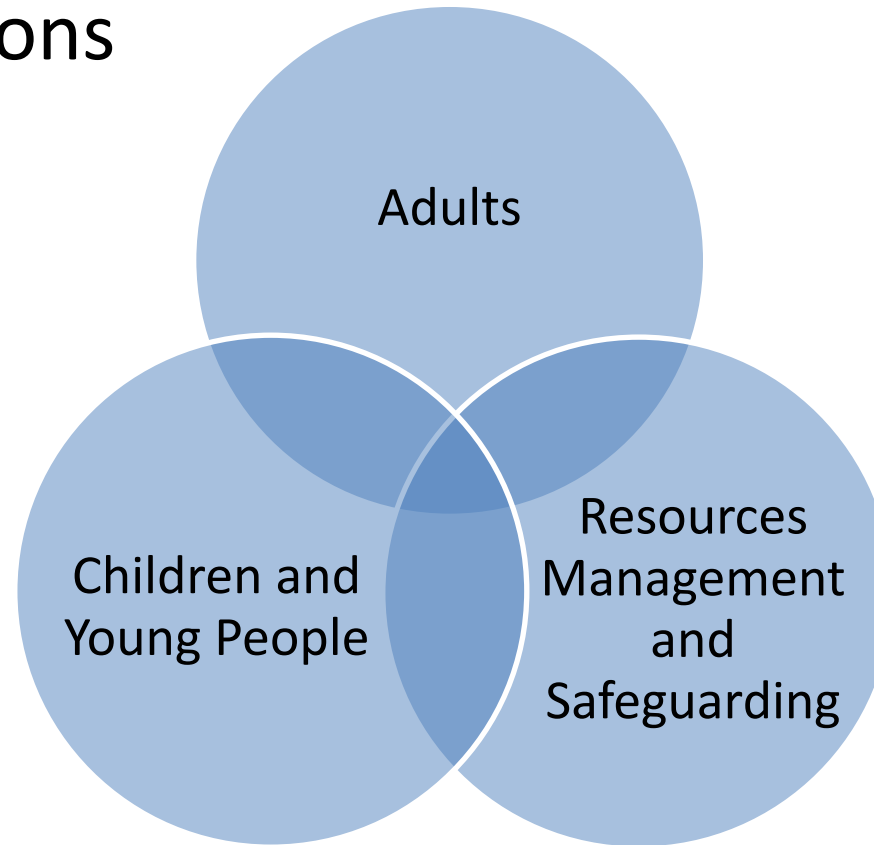
To make the connections, and take an **integrated approach** to our work, a number of service areas are allocated within the specific remit of each committee.



For Corporate Performance & Resources Committee: Corporate Policy and Performance, Communications, Customer Relations, Finance, ICT, Property, Legal, Democratic Services, Human Resources, Surplus Land and Property, Capital Schemes, Revenue Proposals over £300,000, Public Services Board.

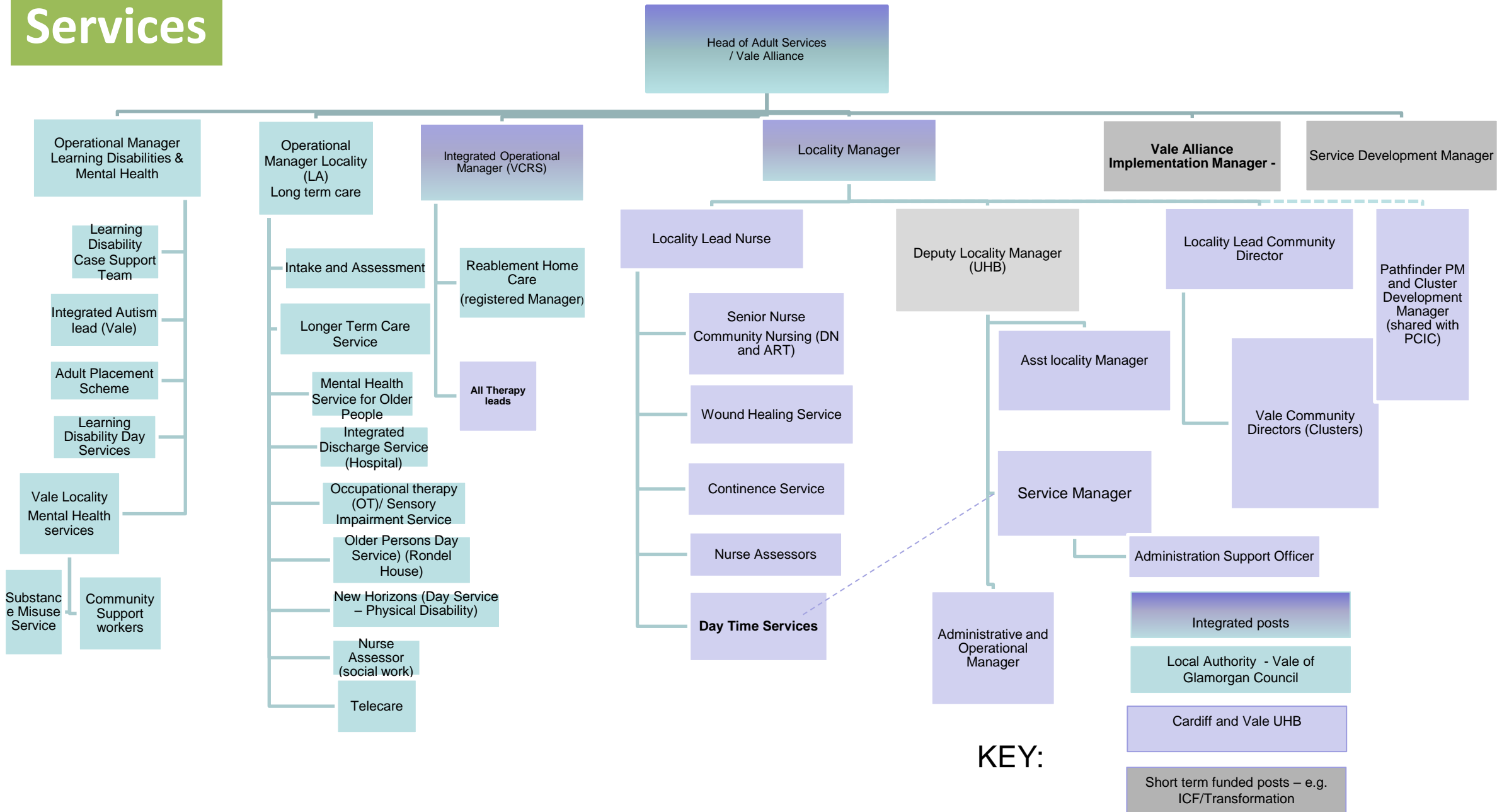
Social Services Directorate

- Three Divisions



Adult Services

Vale Locality Integrated Structure (Vale Alliance)(March 2022)



Overview – Adults

The Division provides services for people with a learning disability, autism, mental health problems, frailty because of aging, a physical disability or sensory impairment and adults who need protecting from abuse

Adult Locality Services are focused in six areas:

Intake and Assessment;

Reablement Services (Vale Community Resource Service (VCRS));

Integrated Discharge Service;

Longer Term Care Service

Mental Health Services for Older People: and

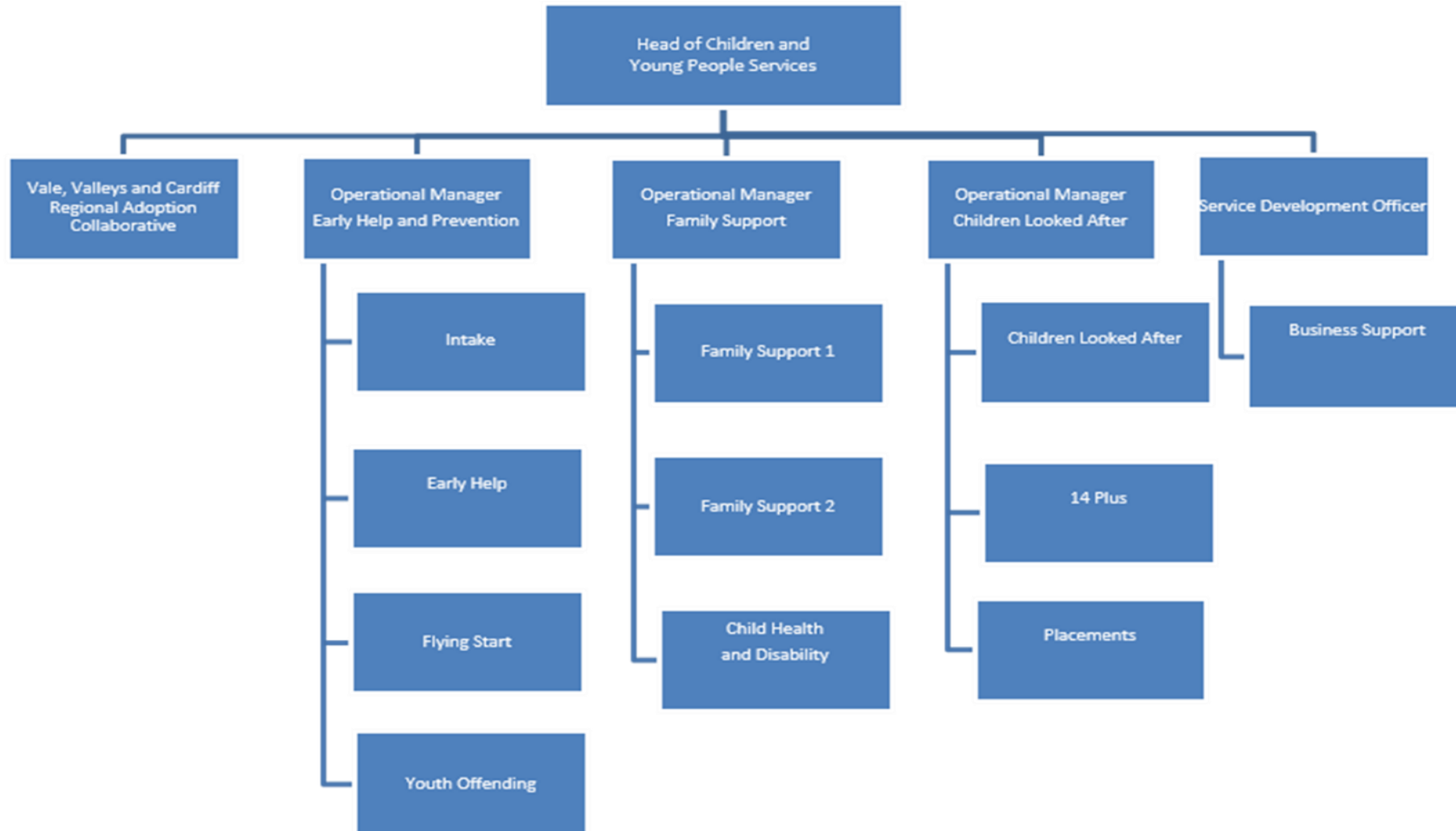
Day Services (Older People and People with a Physical Disability).

Learning Disability services are delivered through a joint team with Swansea Bay University Health Board. It provides a specialist, multi-disciplinary service for learning disabled individuals. This includes Assessment and Care Management. We also provide and promote Adult Placement in a joint contract with Bridgend County Council and Day Opportunities for Vale citizens. We also provide an Autism advice service across the region in partnership with Cardiff and Vale UHB,

The Vale of Glamorgan **Community Mental Health Teams** (CMHTs) are jointly operated by Cardiff and Vale University Health Board (UHB) and the Vale of Glamorgan Council. They offer a specialist, multi-disciplinary service for individuals living with mental ill health. CMHTs form part of an integrated 'network of care'.

The Vale of Glamorgan **Substance Misuse Services** are delivered in partnership with the Cardiff and Vale University Health Board to provide rehabilitative interventions for people whose substance misuse is affecting their wellbeing or safety.

Children and Young People Services



Overview – Children and Young People Services

Children and Young People Services provide help to children and young people who are eligible for care and support. These include children requiring support, who are looked after by the Council, who have left care, who have additional needs and /or disabilities or who need to be safeguarded.

Families Achieving Change Together is a Families First early intervention and prevention service enabling families to make positive changes, reducing the number of families developing more complex and challenging needs. The ability of the service to work effectively at and before the front door of statutory children's services is central to effective prevention.

Flying Start is Welsh Government funded and provides support to families to give children a better start in life. Its aim is to improve a child's development, health and well-being in preparation for school in a way that promotes a child's ability to fulfil their potential. Flying Start works in partnership with statutory children's services where children involved with Children and Young People Services live in the Flying Start area.

Our Intake Team incorporates the Division's Duty function and receives all initial enquiries including child protection issues. Working effectively with partners with a focus on improving integrated working, the Team provide assessment and signposting to ensure families receive the right level of support at the right time.

Our two Family Support Teams work with children and families where their needs have identified the need for care and support. This includes children on the Child Protection Register and those in pre and care proceedings.

Our Child Health and Disability Team provide services to children and young people who have a severe or significant learning disability, physical disability, sensory impairment or profound communication impairment. They have strong multi-agency links, particularly with Health, and are currently engaged in regional working to the benefit of disabled children and their families.

Overview – Children and Young People Services

Children and Young People Services provide help to children and young people who are eligible for care and support. These include children requiring support, who are looked after by the Council, who have left care, who have additional needs and /or disabilities or who need to be safeguarded.

Our Children Looked After Team provides a dedicated Team for children looked after. The Team supports children and young people voluntarily accommodated or subject of Care or Placement Orders.. The Team's focus is on enabling children looked after to achieve their potential through stable placements, appropriate education and positive attachments. Where children require therapeutic support, this is readily available.

Our 14 Plus Team support young people aged 14 and over who are looked after by the Local Authority, young people who are homeless aged between 16 and 18 years, and all care leavers up to the age of 25 years. The Team's commitment to engagement is promoting the increasing involvement of young people not only in their own lives but in improving services for others.

Our Youth Offending Service is a statutory multi-agency partnership responsible for preventing offending and further offending in the Vale of Glamorgan. Working closely with teams across Children and People Services and its partners, the service promotes preventative working that seeks to prevent offending where possible.

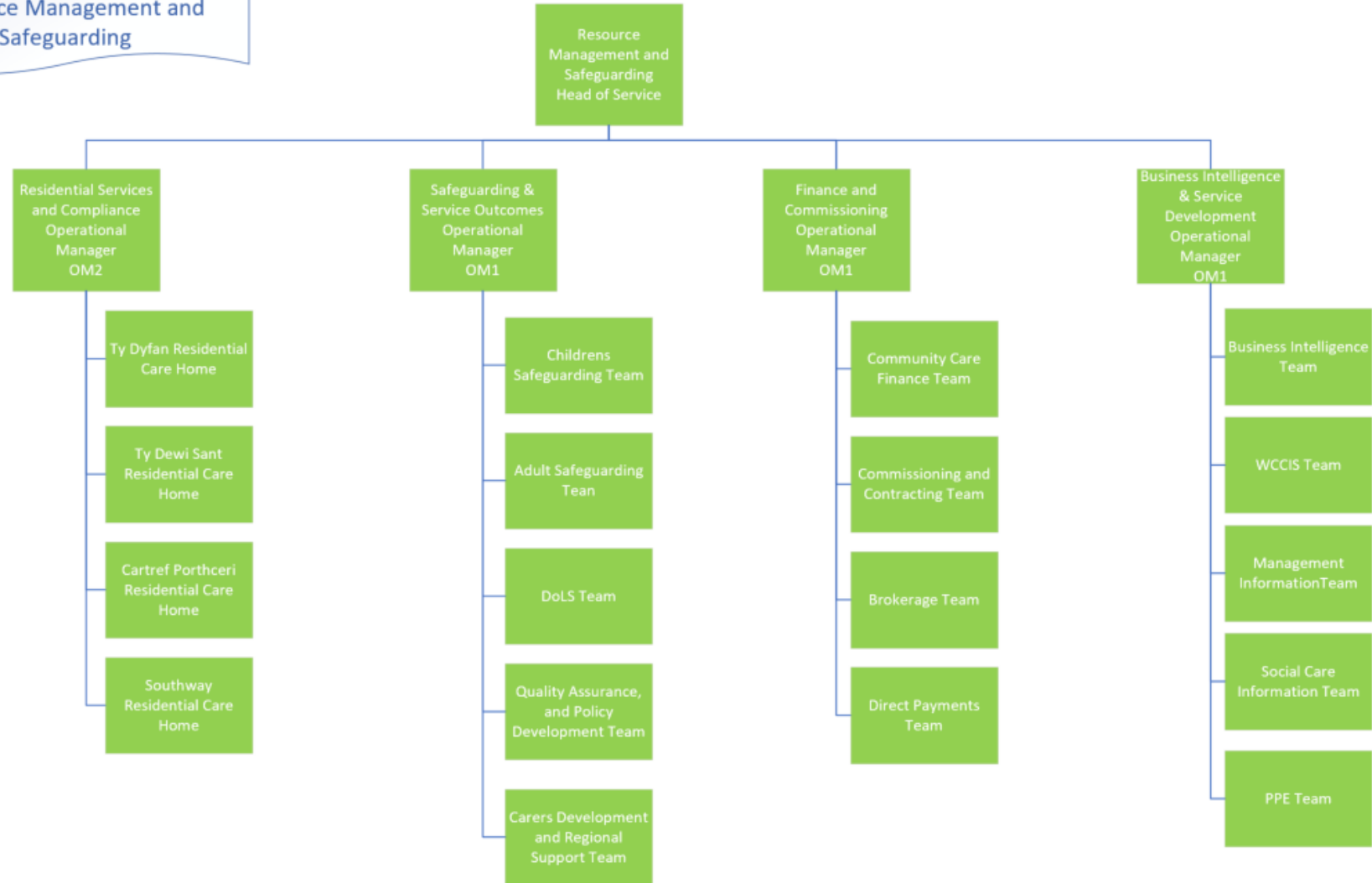
Our Placements Team assesses and approves foster placements for Vale of Glamorgan children in conjunction with our Fostering Panel. This includes an increasing number of kinship placements enabling children to remain within their wider family network. The team provide support to foster carers, with a commitment to promoting the recruitment and retention of local carers. Identifying and commissioning placements for children looked after, both within our internal resources and within the independent sector when an internal placement cannot be identified is a key part of the Team's role.

The Regional Adoption Collaborative, hosted by the Vale of Glamorgan, operates across the Vale of Glamorgan, Cardiff, Rhondda Cynon Taf and Merthyr Tydfil assessing and approving adopters, providing support, and family finding for children whose plan is adoption. The Collaborative is one of five regional adoption collaboratives across Wales that form part of the National Adoption Service.



Resources Management and Safeguarding

Resource Management and Safeguarding



Overview – Resources Management and Safeguarding

The service provides support to the Directorate in the key areas of leadership and culture, financial stability and resources, planning and partnerships, commissioning and contracting, residential services, workforce development, performance management, and protecting children and adults at risk.

Finance and Commissioning

Provide support to the Directorate for all financial elements including commissioning, contracting, brokerage, community care finance, direct payments, independent providers, quality monitoring and contract compliance.

Business Intelligence, Performance Management and WCCIS

Supporting the work of the Social Services to evidence the performance functions of the Directorate and inform managers of progress and areas for improvement. Supporting the social care workforce through training and development opportunities. Maintaining and developing the family information service, PPE and public information functions.

Safeguarding and Service Outcomes

Ensuring the welfare and needs of children and adults 'at risk' are safeguarded and they are protected from harm. A dedicated team of professionals to oversee Deprivation of Liberty Safeguards. Unpaid Carers services include dedicated regional strategic carers support officers to ensure that carers needs are identified and signposted to enable them to continue in their role. Our quality assurance officers support citizen consultation through a programme of audit and stakeholder questionnaires to inform practice and service delivery. Statutory Social Services Complaints functions also sit within RMS.

Residential Services and Compliance

Our own residential services across four care homes providing direct support to older people and those living with dementia.

Challenges for Social Care

Demand
Management

Fragility of
Independent
Provider market

Demographics

Expectations of
Service users and
carers

Legislation

Capacity/ Sufficiency
of staff to deliver

Complex case
management

Regional and
National Working
arrangements

Budget pressures

Priorities for Social Care

Protecting People/
Safeguarding

Financial
Sustainability/
Reshaping

Workforce

Demand
Management

Market Stability &
future rebalancing

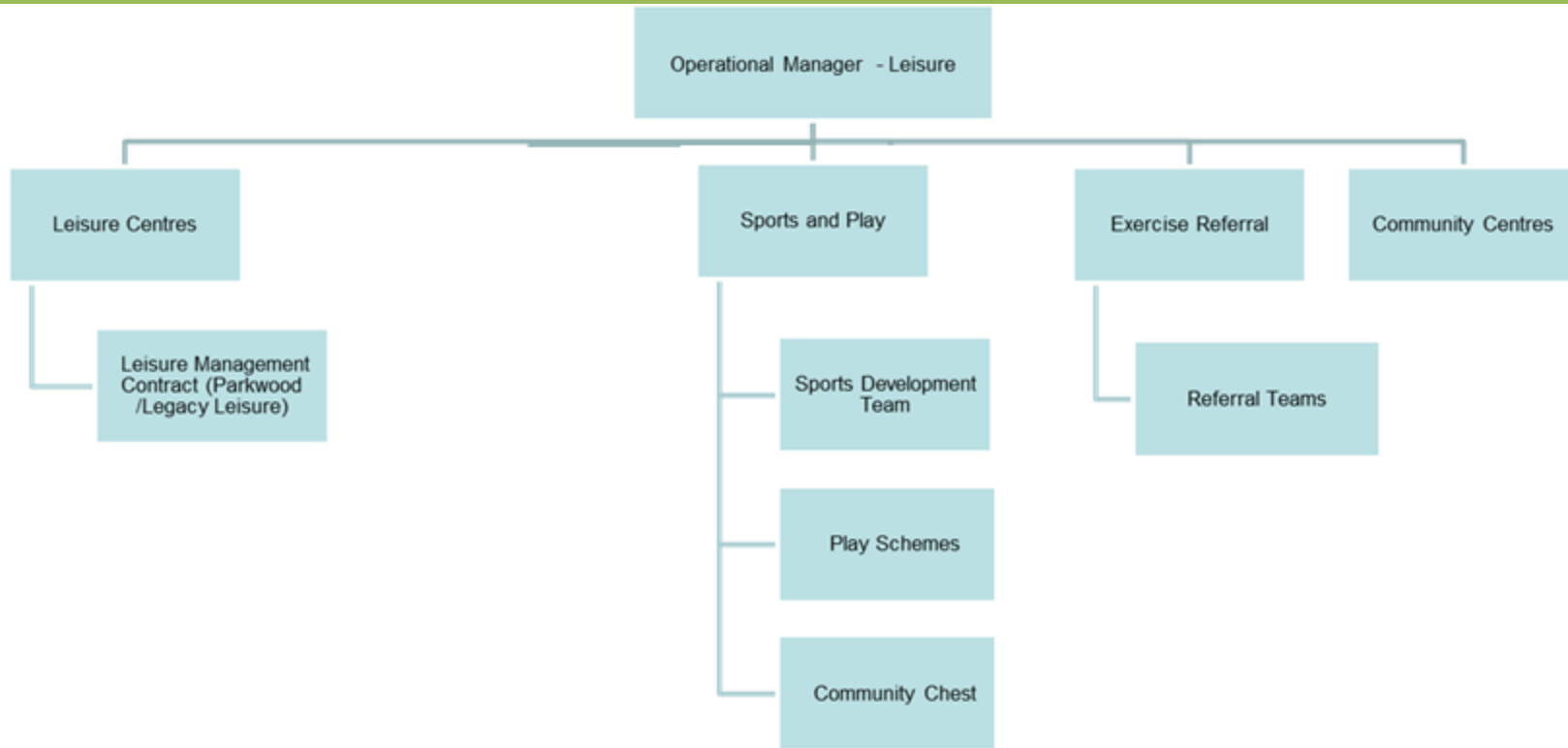
Performance
monitoring &
Improvement

Prevention and
Early Intervention

Strengths Based
Approaches/
Outcomes Focused
Practice

Social Care and
Community Health
Services
Integration

Leisure Services



Overview – Leisure Services

Description

- To maintain and improve the levels of participation and physical activity in the Vale of Glamorgan to encourage and promote active and healthy lifestyles
- To provide quality public urban parks, public open space, recreation fields and play facilities throughout the Vale of Glamorgan

Parks and Grounds Maintenance – The Council provides award winning parks and gardens for residents and visitors alike. We are also responsible for the maintenance of all highway verges, sports fields, play areas and public open spaces.

Trees – Virtually all trees under the Council’s ownership are managed by Leisure Services although ownership can vary between departments.

Leisure Centres – The Council retains the ownership and responsibilities for 6 Leisure Centres. The Centres are now operated by Legacy Leisure on a 10 year contract that commenced on 1st August 2012. This is currently being extended, via negotiation, to the end of December 2030.

Sport and Play – The major aim is to encourage greater participation, especially amongst children and young people with a focus on equality areas such as women and girls, disability and deprivation.

Overview – Leisure Services

Exercise referral – This is a Welsh Government initiative that refers patients to the Leisure Centres directly to improve individual health and wellbeing. The scheme has been particularly successful in the Vale of Glamorgan and has assisted in attracting new users to the Centres.

Community Centres – The Council is currently responsible for 22 Community Centres, that whilst operated by volunteer committees, rely on us for expert advice and funding for significant repairs / maintenance.

Priorities for Leisure Services

Increase Physical Activity levels across the Vale of Glamorgan

Finalise the Leisure Management Contract Extension

Seek additional income opportunities across the service – notably within Parks

Look for further efficiency savings and reductions in subsidy in some areas

Maintain high quality of work such as green flag awards, playground refurbishments, changing room refurb etc.

Review Leisure Strategy

Continue single use policies

Secure grant funding for Sports Development and Exercise Referral

Future play scheme provision

Challenges for Leisure Services

Single Use / Outdoor
Facilities

Capital Investment

Ageing workforce

Reliance on Grants

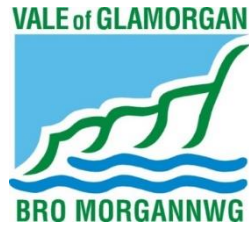
Customer expectations

Equality of service
provision

Performance
Measurements

Subsidy levels (over
provision /
consolidation in some
service provision)

Developing meaningful
partnerships



AMBITIOUS

OPEN

TOGETHER

PROUD



Welcome to Scrutiny Committee